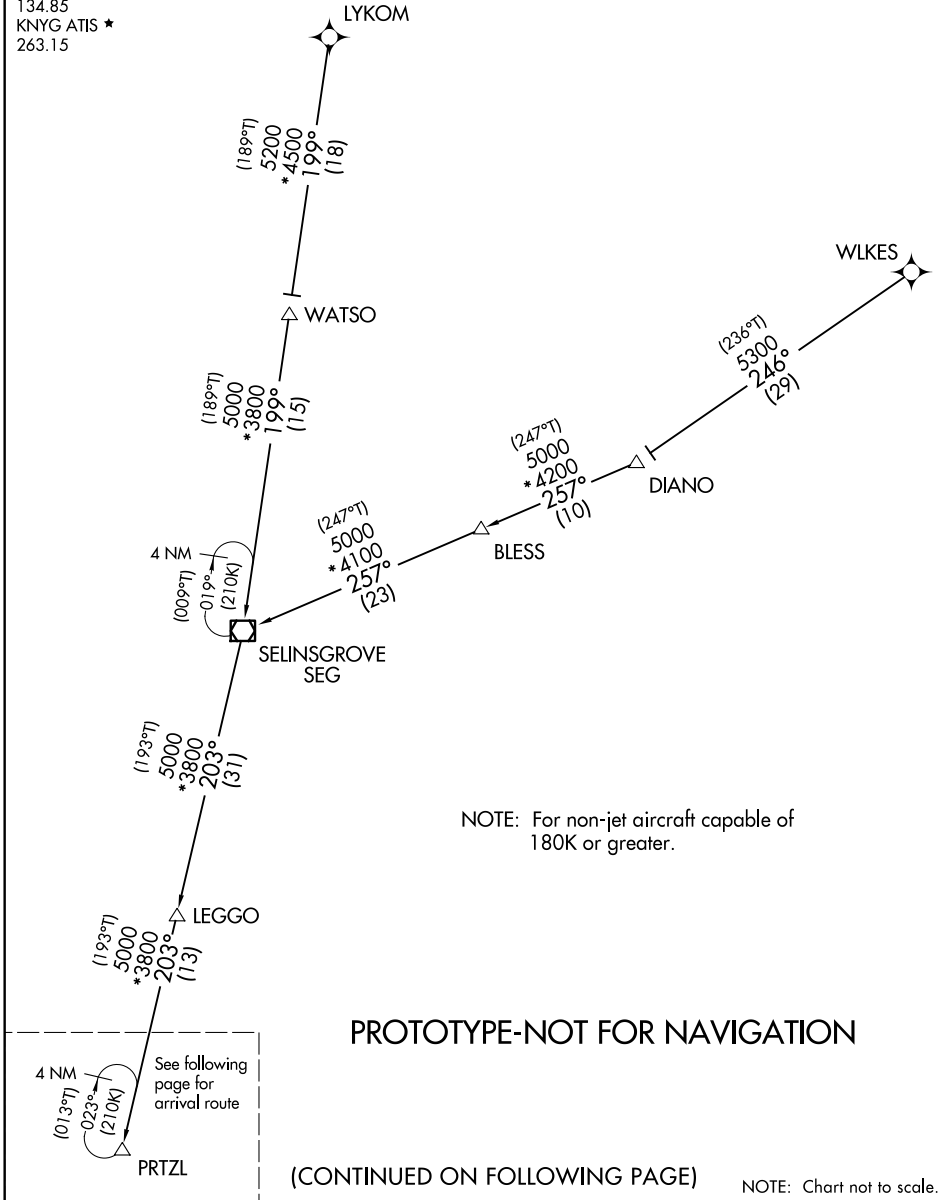


PRTZL TWO ARRIVAL (RNAV) Transition Routes

WASHINGTON, DC

POTOMAC APP CON
 120.45 306.925 (241°-330°)
 128.525 306.925 (091°-240°)
 126.1 338.25 (331°-090°)
 HEF ATIS
 125.175
 IAD D-ATIS
 134.85
 KNYG ATIS ★
 263.15

RNAV 1 - DME/DME/IRU or GPS.
 RADAR required.



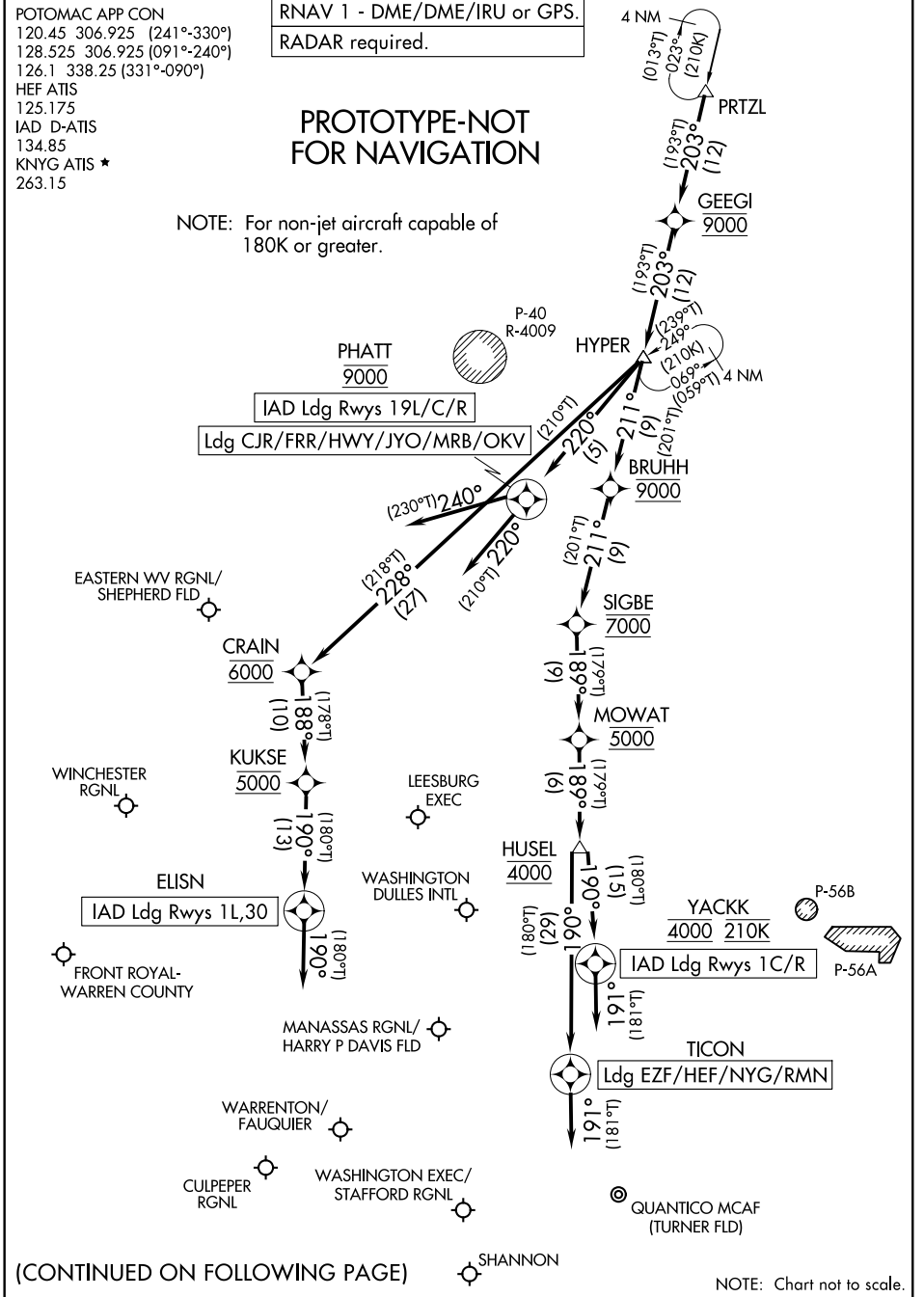
PRTL TWO ARRIVAL (RNAV) Arrival Routes

POTOMAC APP CON
 120.45 306.925 (241°-330°)
 128.525 306.925 (091°-240°)
 126.1 338.25 (331°-090°)
 HEF ATIS
 125.175
 IAD D-ATIS
 134.85
 KNYG ATIS ★
 263.15

RNAV 1 - DME/DME/IRU or GPS.
 RADAR required.

PROTOTYPE-NOT FOR NAVIGATION

NOTE: For non-jet aircraft capable of 180K or greater.



(CONTINUED ON FOLLOWING PAGE)

NOTE: Chart not to scale.

PRTL TWO ARRIVAL (RNAV) Arrival Routes

ARRIVAL ROUTE DESCRIPTION

LYKOM TRANSITION (LYKOM.PRTZL2)

SELINGSGROVE TRANSITION (SEG.PRTZL2)

WLKES TRANSITION (WLKES.PRTZL2)

IAD: From PRTZL on track 203° to cross GEEGI at 9000, then on track 203° to HYPER.

LANDING IAD RUNWAYS 1C/R: From HYPER on track 211° to cross BRUHH at 9000, then on track 211° to cross SIGBE at 7000, then on track 189° to cross MOWAT at 5000, then on track 189° to cross HUSEL at 4000, then on track 190° to cross YACKK at 4000 and at 210K, then on track 191°. Expect RADAR vectors to final approach course.

LANDING IAD RUNWAYS 1L, 30: From HYPER on track 228° to cross CRAIN at 6000, then on track 188° to cross KUKSE at 5000, then on track 190° to ELISN, then on track 190°. Expect RADAR vectors to final approach course.

LANDING IAD RUNWAYS 19L/C/R: From HYPER on track 220° to cross PHATT at 9000, then on track 220°. Expect RADAR vectors to final approach course.

LANDING CJR/FRR/HWY/JYO/MRB/OKV: From PRTZL on track 203° to cross GEEGE at 9000, then on track 203° to HYPER, then on track 220° to cross PHATT at 9000, then on track 240°. Expect RADAR vectors to final approach course.

LANDING EZF/HEF/NYG/RMN: From PRTZL on track 203° to cross GEEGI at 9000, then on track 203° to HYPER, then on track 211° to cross BRUHH at 9000, then on track 211° to cross SIGBE at 7000, then on track 189° to cross MOWAT at 5000, then on track 189° to cross HUSEL at 4000, then on track 190° to TICON, then on track 191°. Expect RADAR vectors to final approach course.

PROTOTYPE-NOT FOR NAVIGATION