

Flight Procedures Cover Page	Task Action: FLIGHT CHECK	Task Type: IAP	Estimated Chart Date: 03/19/2026	APWS Task ID: 33E88AD5DD4C48709CA61C44B23DAE07	APWS Project ID: 16B12DD8113C488AAE8709B5497BD5C7
Procedure: RNAV (GPS) RWY 29 AMDT 1A		Enroute: NO	Specialist: Hardison, Dustin		Agreement Number:
Airport ID: KLFT			Airport City: LAFAYETTE		State: LA
Facility ID:	Facility Type:	Flight Inspection Remark Type: New FC Slot			

Procedure Comments:
CURRENT AIRNAV DATA USED.
Contact Rake McGraw AJV-A422
(405)597-8711

QUALITY
10
CHECKED

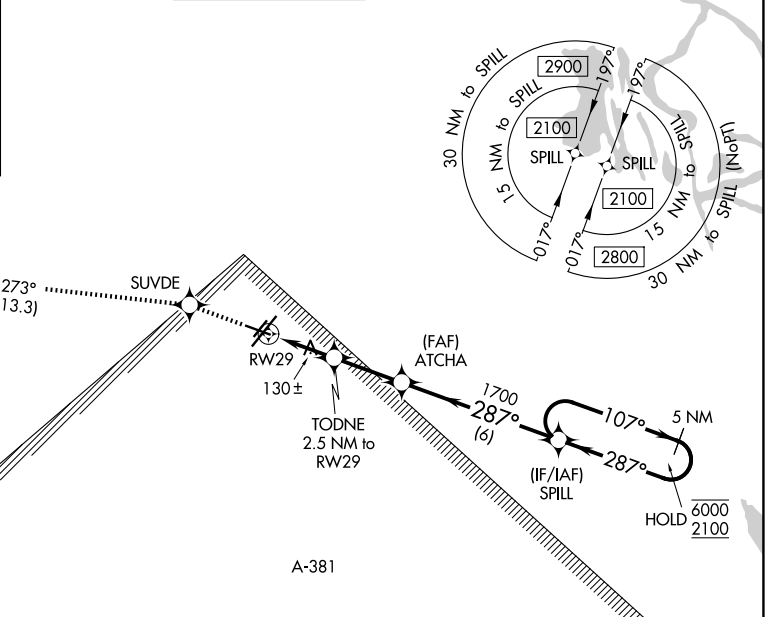
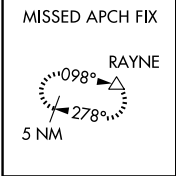
QUALITY
29
CHECKED

WAAS CH 45703 W29A	APP CRS 287°	Rwy Ldg 5155 TDZE 42 Apt Elev 42
--	------------------------	---

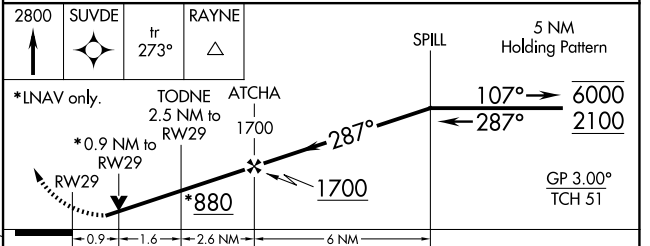
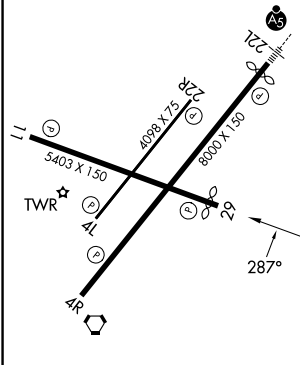
OLD

RNAV (GPS) RWY 29
LAFAYETTE RGNL/PAUL FOURNET FLD (L.F'T')

RNP APCH.		MISSED APPROACH: Climb to 2800 direct SUVDE and on track 273° to RAYNE and hold.		
Rwy 29 helicopter visibility reduction below 3/4 SM NA. For uncompensated Baro-VNAV systems, LNAV/VNAV NA below -2°C or above 54°C.				
ATIS 134.05	LAFAYETTE APP CON * 121.1 363.0	LAFAYETTE TOWER * 118.5 (CTAF) 0 257.8	GND CON 121.8	UNICOM 122.95



ELEV 42	D	TDZE 42
---------	----------	---------



CATEGORY	A	B	C	D
LPV DA		292-3/4	250 (300-3/4)	
LNAV/VNAV DA		292-3/4	250 (300-3/4)	
LNAV MDA		380-1	338 (400-1)	
CIRCLING	500-1	580-1	700-1 3/4	700-2
	458 (500-1)	538 (600-1)	658 (700-1 3/4)	658 (700-2)

REIL Rws 4L, 4R, 11, 22R and 29
MIRL Rwy 11-29 and 4L-22R
HIRL Rwy 4R-22L

SC-4, 30 OCT 2025 to 27 NOV 2025

SC-4, 30 OCT 2025 to 27 NOV 2025