

ILS or LOC RWY 6
HUDSON VALLEY RGNL (POU)

LOC I-POU 111.3	APP CRS 063°	Rwy Ldg 5001 TDZE 156 Apt Elev 164
---------------------------	------------------------	---

RNP APCH-GPS. From BIZEX or HUO VOR/DME.

DME required for procedure entry from IGN VOR/DME. DME required for LOC only.

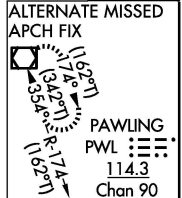
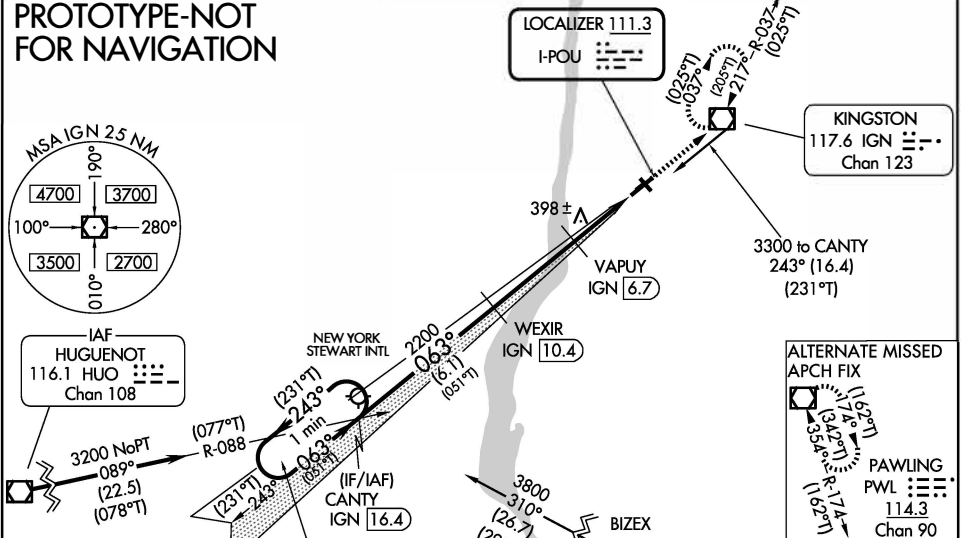
▼ Rwy 6 helicopter visibility reduction below 3/4 SM NA. Circling NA to Rws 7 and 25. Circling Rwy 15, 33 NA at night. When Circling to Rwy 24 at night, operational VGSJ required, remain on or above VGSJ glidepath until threshold. VDP NA when using MGJ altimeter setting. DME from IGN VOR/DME. Simultaneous reception of I-POU and IGN DME required. For inop ALS, increase S-LOC 6 Cats A/B visibility to 1 SM and Cats C/D visibility to 1 3/4 SM. When local altimeter setting not received, use MGJ altimeter setting and increase S-ILS 6 DA to 555 feet; increase all MDAs 80 feet and S-LOC 6 Cats C/D and Circling Cat C visibility 1/4 SM.



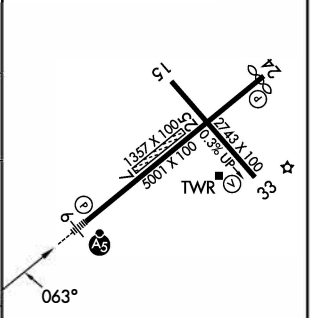
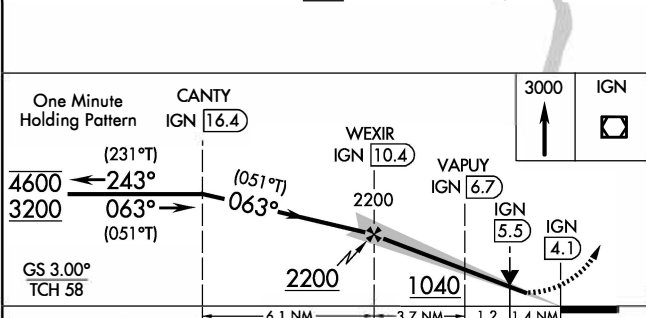
MISSED APPROACH:
Climb to 3000 direct IGN VOR/DME and hold, continue climb-in-hold to 3000.

ATIS 126.75	NEW YORK APP CON 132.75 363.1	DUTCHESS COUNTY TOWER ★ 124.0 (CTAF) 269.15	GND CON 121.8	UNICOM 122.95
-----------------------	---	---	-------------------------	-------------------------

PROTOTYPE-NOT FOR NAVIGATION



ELEV 164	TDZE 156
----------	----------



CATEGORY	A	B	C	D
S-ILS 6		485-3/4	329 (400-3/4)	
S-LOC 6	640-3/4	484 (500-3/4)	640-1	484 (500-1)
CIRCLING	780-1 616 (700-1)	840-1 676 (700-1)	940-2 1/4 776 (800-2 1/4)	1080-3 916 (1000-3)

MIRL Rwy 15-33
HIRL Rwy 6-24
REIL Rwy 24
REIL Rwy 33