

WAAS CH XXXX XXX	APP CRS 083°	Rwy Idg 5102 TDZE 3261 APT Elev 3279
------------------------	------------------------	---

RNAV (GPS) RWY 8

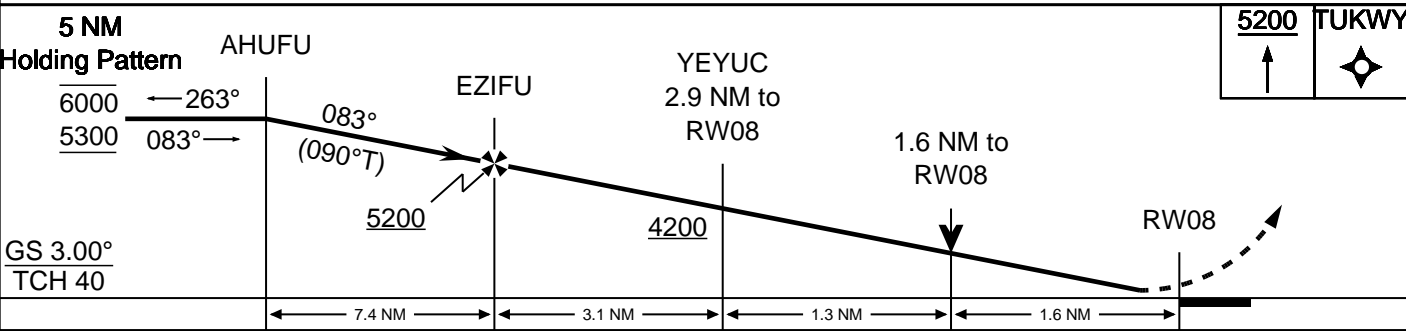
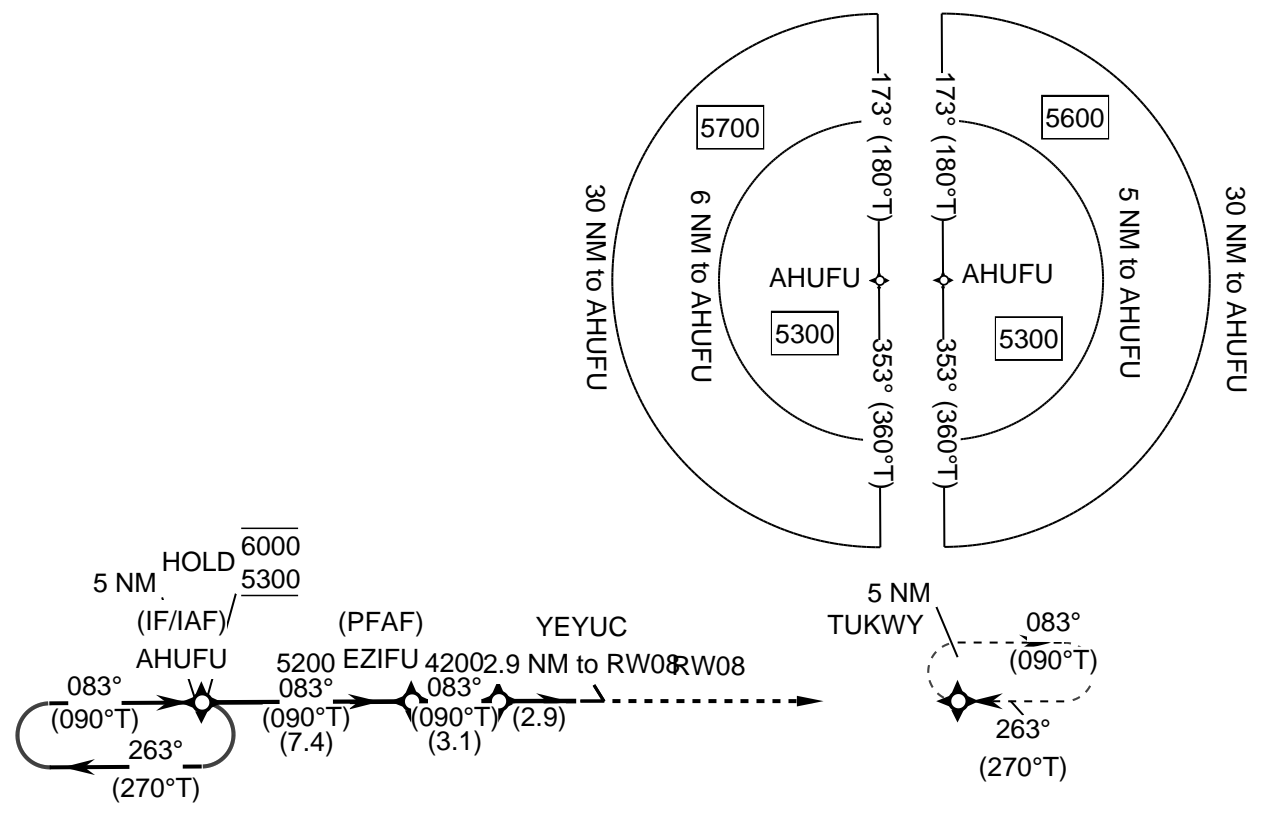
SEARLE FLD (KOGA)

FOR UNCOMPENSATED BARO-VNAV SYSTEMS, LNAV/VNAV NA BELOW -21°C OR ABOVE 54°C. RWY 8 HELICOPTER VISIBILITY REDUCTION BELOW 3/4 SM NOT AUTHORIZED. BARO-VNAV AND VDP NA WHEN USING IML ALTIMETER SETTING. WHEN LOCAL ALTIMETER SETTING NOT RECEIVED, USE

MISSED APPROACH: CLIMB TO 5200 DIRECT TUKWY AND HOLD.

IML ALTIMETER SETTING: INCREASE LPV DA TO 3597 FEET; INCREASE LNAV/VNAV DA TO 3952 FEET AND ALL VISIBILITIES 1/4 SM; INCREASE ALL MDAS 100 FEET AND CIRCLING CAT B VISIBILITY 1/4 SM.

PROTOTYPE-NOT FOR NAVIGATION



CATEGORY	A	B	C	D
LPV	3511-1 250			NA
LNAV/VNAV	3866-1 3/4 605			NA
LNAV	3800-1 539			NA
CIRCLING	3940-1 661	4000-1 721		NA