

Flight Procedures Cover Page	Task Action: FLIGHT CHECK	Task Type: IAP	Estimated Chart Date: 07/09/2026	APWS Task ID: 36391691A8ED41418058D23FE2641010	APWS Project ID: FE62B9DC45D440C3A9C903B7EA253E37
Procedure: RNAV (GPS) RWY 8 AMDT 2F		Enroute: NO	Specialist: Suppes, Jill		Agreement Number:
Airport ID: KOGA			Airport City: OGALLALA		State: NE
Facility ID:	Facility Type:	Flight Inspection Remark Type: New FC Slot			

**Procedure Comments:**

UTILIZED ACTIVE DATA FOR KOGA AIRPORT AND RWY 8.

CLEARs NOTAM FDC 3/3365; ADDED CHART NOTE: RWY 8 HELICOPTER VISIBILITY REDUCTION BELOW 3/4 SM NOT AUTHORIZED.

UPDATED CRC REMAINDER 228E3F8B.

CONTACT ROBERT HAMILTON: AJV-A433, 405-954-4608.

05/05/2026





WAAS CH XXXX XXX	APP CRS <b>083°</b>	Rwy Idg <b>5102</b> TDZE <b>3261</b> APT Elev <b>3279</b>
------------------------	------------------------	---

# RNAV (GPS) RWY 8

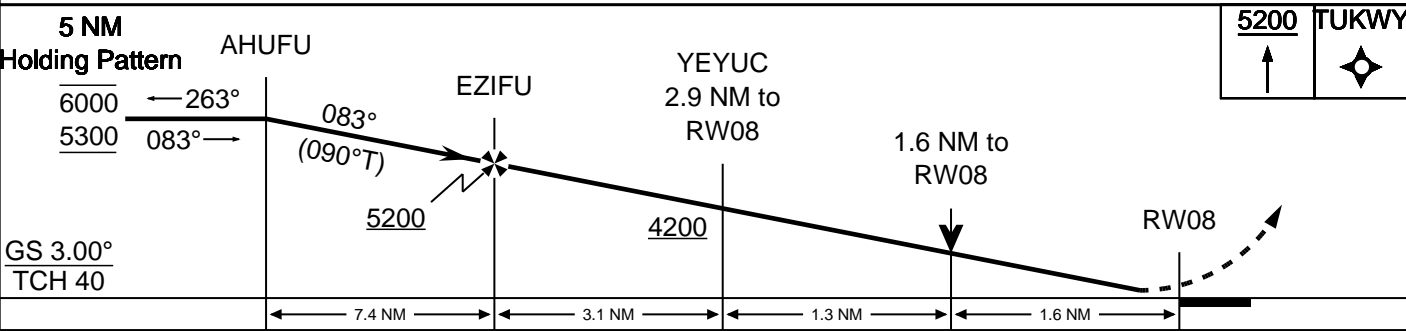
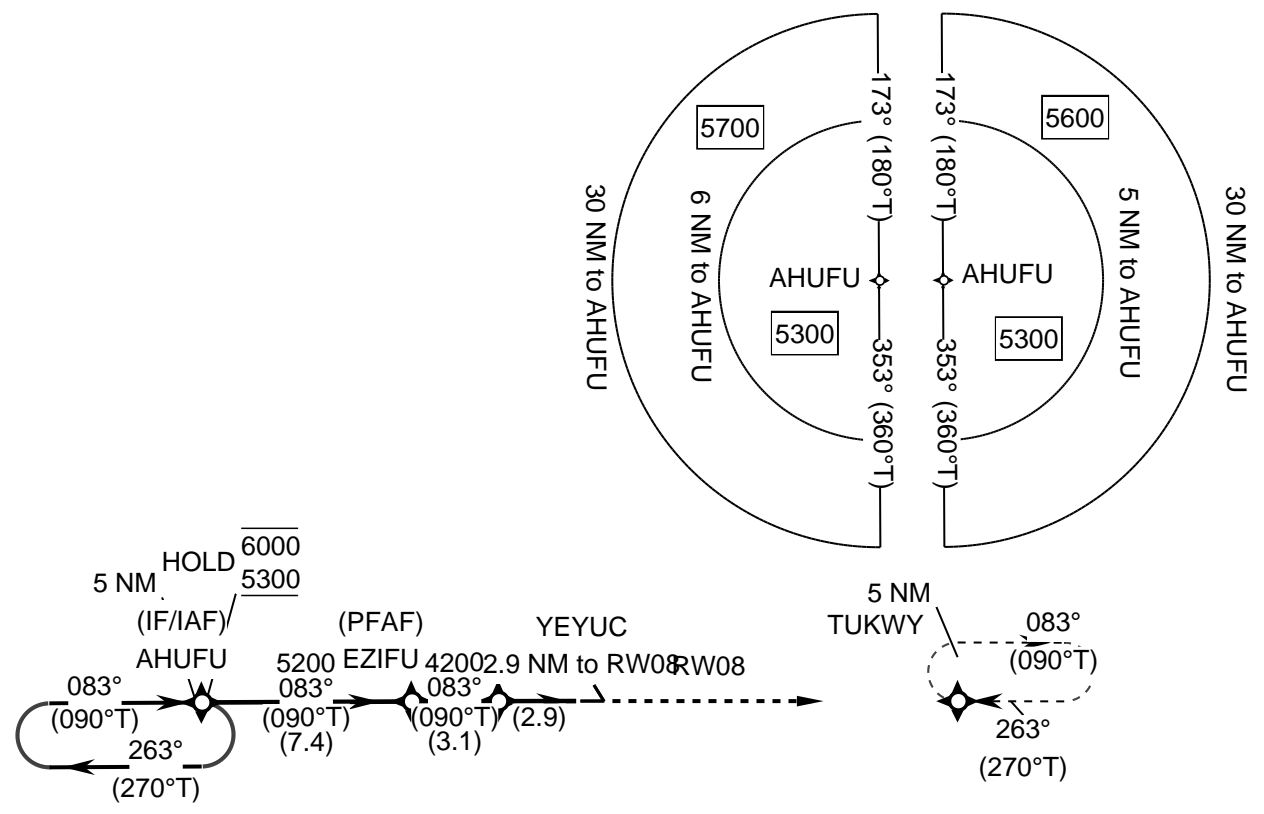
SEARLE FLD (KOGA)

FOR UNCOMPENSATED BARO-VNAV SYSTEMS, LNAV/VNAV NA BELOW -21°C OR ABOVE 54°C. RWY 8 HELICOPTER VISIBILITY REDUCTION BELOW 3/4 SM NOT AUTHORIZED. BARO-VNAV AND VDP NA WHEN USING IML ALTIMETER SETTING. WHEN LOCAL ALTIMETER SETTING NOT RECEIVED, USE

MISSED APPROACH: CLIMB TO 5200 DIRECT TUKWY AND HOLD.

IML ALTIMETER SETTING: INCREASE LPV DA TO 3597 FEET; INCREASE LNAV/VNAV DA TO 3952 FEET AND ALL VISIBILITIES 1/4 SM; INCREASE ALL MDAS 100 FEET AND CIRCLING CAT B VISIBILITY 1/4 SM.

## PROTOTYPE-NOT FOR NAVIGATION



CATEGORY	A	B	C	D
LPV	3511-1 250			NA
LNAV/VNAV	3866-1 3/4 605			NA
LNAV	3800-1 539			NA
CIRCLING	3940-1 661	4000-1 721		NA

WAAS CH <b>57903</b> <b>W08A</b>	APP CRS <b>083°</b>	Rwy Idg TDZE Apt Elev	<b>5102</b> <b>3260</b> <b>3279</b>
--	------------------------	-----------------------------	---

**OLD**

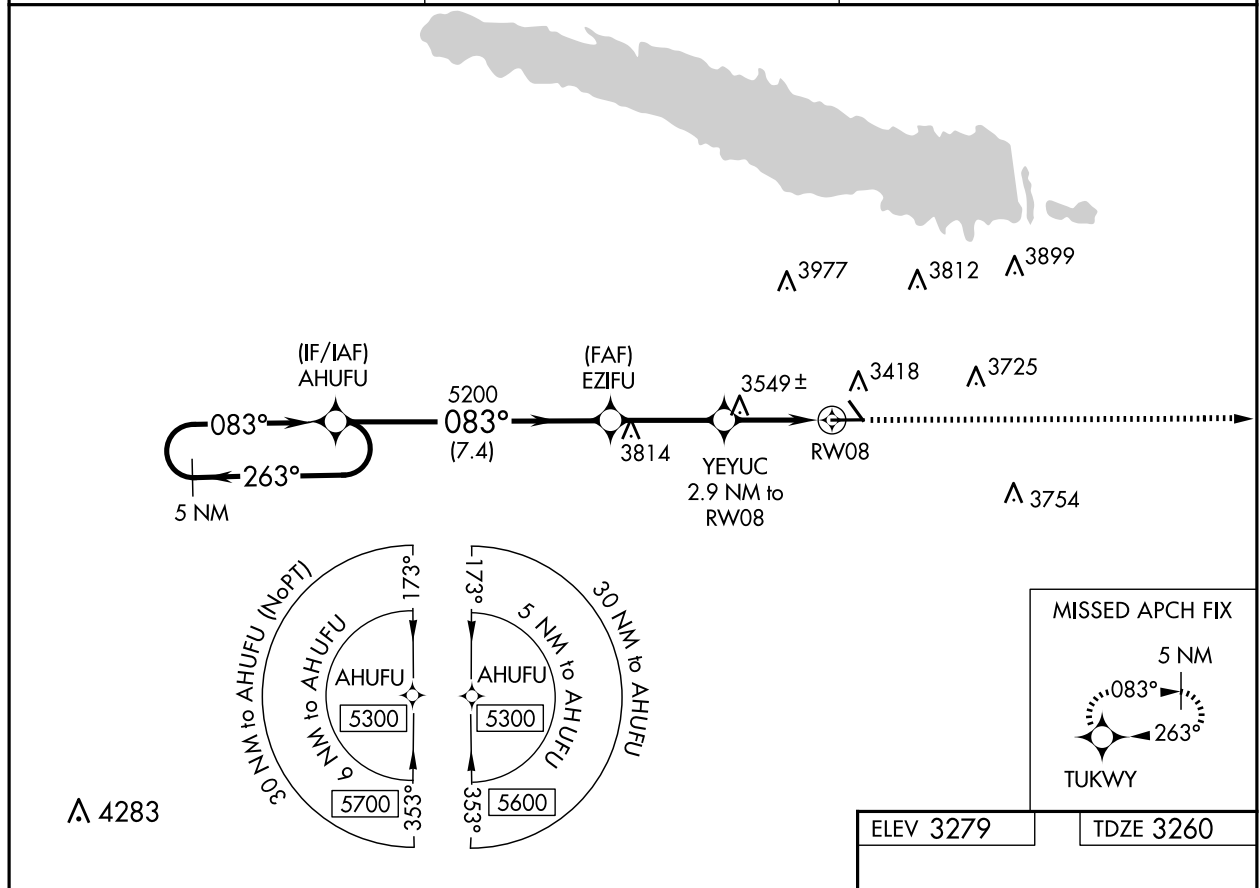
**RNAV (GPS) RWY 8**  
SEARLE FLD (OGA)

RNP APCH.

**▼** For uncompensated Baro-VNAV systems, LNAV/VNAV NA below -21°C or above 54°C. When local altimeter setting not received, use Imperial altimeter setting and increase all DA 86 feet and all MDA 100 feet, increase LPV all Cats visibility 1/8 SM, LNAV/VNAV all Cats and Circling Cat B visibility 1/4 SM. Baro-VNAV NA when using Imperial altimeter setting.

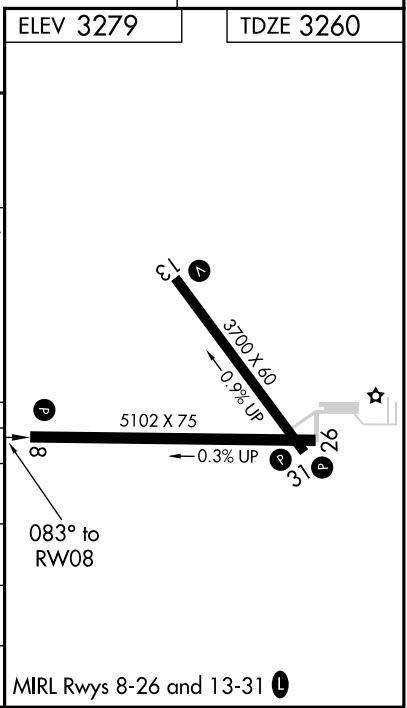
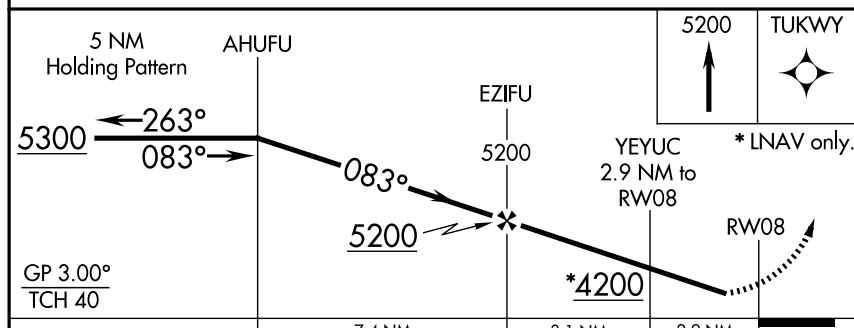
**▲** MISSED APPROACH: Climb to 5200 direct TUKWY and hold.

AWOS-3 <b>121.275</b>	DENVER CENTER <b>132.7 397.85</b>	UNICOM <b>122.8 (CTAF) ①</b>
--------------------------	--------------------------------------	---------------------------------



NC-2, 25 DEC 2025 to 22 JAN 2026

NC-2, 25 DEC 2025 to 22 JAN 2026



CATEGORY	A	B	C	D
LPV DA	3510-1	250 (300-1)		NA
LNAV/VNAV DA	3865-2¼	605 (600-2¼)		NA
LNAV MDA	3800-1	540 (600-1)		NA
CIRCLING	3940-1 661 (700-1)	4000-1 721 (800-1)		NA