

Flight Procedures Cover Page	Task Action: P-NOTAM	Task Type: IAP	Estimated Chart Date: 07/09/2026	APWS Task ID: 37918ABA5ABD466BB2E672FEE9B98FEE	APWS Project ID: 6A91A4A8A2EA4F6EACB347489ECA8ABD
Procedure: RNAV (GPS) RWY 14 AMDT 1D		Enroute: NO	Specialist: Johnson, Timothy		Agreement Number:
Airport ID: KAEX			Airport City: ALEXANDRIA		State: LA
Facility ID:	Facility Type:	Flight Inspection Remark Type:			

**Procedure Comments:**

Visibility Initiative (Garmin) - Update IAP visibility minimums IAW Order 8260.3, Chapter 3, Section 3-3. Visibility Minimums.

PROCESSED IAW TECHNICAL SUPPORT GROUP (AJF-17) MEMO DATED 07/07/2021, SUBJECT: GUIDANCE FOR PROCEDURAL CHANGES REQUIRING FLIGHT INSPECTION/VALIDATION.

CONTACT: CASEY HILL (405) 954-0624.



ALEXANDRIA, LOUISIANA

AL-13 (FAA)

OLD

25163

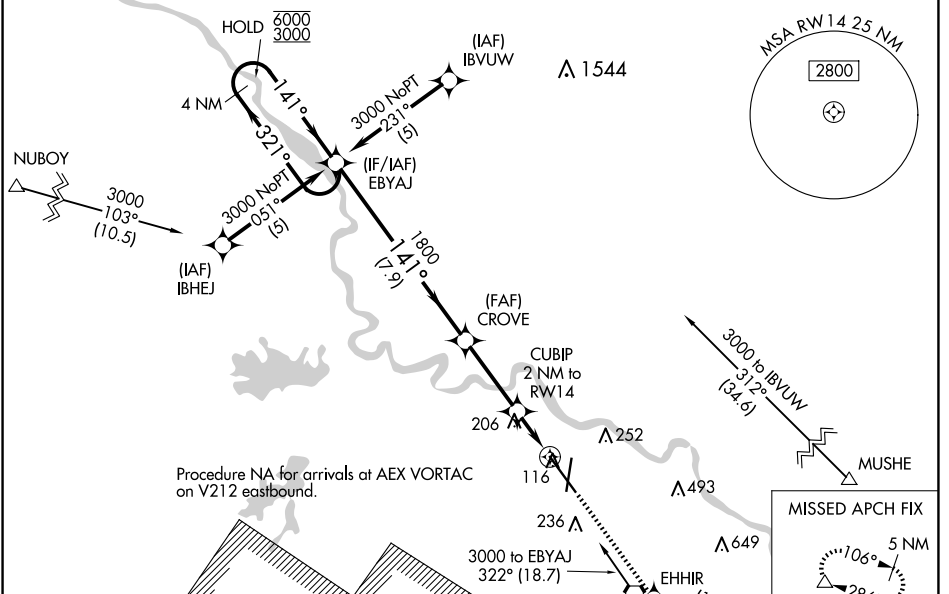
WAAS CH <b>56417</b> <b>W14A</b>	APP CRS <b>141°</b>	Rwy Ldg <b>9352</b> TDZE <b>85</b> Apr Elev <b>88</b>
--	------------------------	---

# RNAV (GPS) RWY 14

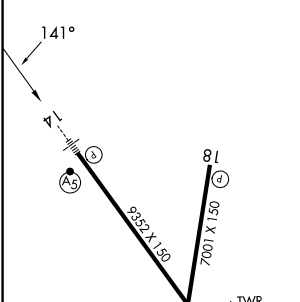
ALEXANDRIA INTL (AEX)

RNP APCH - GPS	MALSR 	MISSED APPROACH: Climb to 4000 direct EHHIR and on track 106° to MUSHE and hold.
<p><b>⚠</b> For uncompensated Baro-VNAV systems, LNAV/VNAV NA below -15°C or above 48°C. For inop ALS increase LNAV Cat D visibility to RVR 6000. RADAR required when R-3801 A-B in use.</p>		

ASOS <b>123.975</b>	POLK APP CON <b>125.4 254.8</b>	ALEXANDRIA TOWER <b>127.35</b> (CTAF) <b>269.2</b>	GND CON <b>121.9 372.0</b>	CLNC DEL <b>121.9</b>
------------------------	------------------------------------	---	-------------------------------	--------------------------



ELEV 88	<b>D</b>	TDZE 85
---------	----------	---------



VGSI and RNAV glidepath not coincident (VGSI Angle 3.00/TCH 71).	4000	EHHIR	tr 106°	MUSHE
--	------	-------	---------	-------

6000 ← 321°	3000 → 141°	1800	780	4000	EHHIR	tr 106°	MUSHE
-------------	-------------	------	-----	------	-------	---------	-------

CATEGORY	A	B	C	D
LPV DA		346/24	261 (300-½)	
LNAV/VNAV DA		488/50	403 (400-1)	
LNAV MDA		480/24	395 (400-½)	480/50 395 (400-1)
<b>C</b> CIRCLING	540-1 452 (500-1)	560-1 472 (500-1)	700-1¾ 612 (700-1¾)	860-2½ 772 (800-2½)

TDZL Rwy 14  
REIL Rwy 18, 32 and 36  
HIRL Rwy 18-36 and 14-32

ALEXANDRIA, LOUISIANA  
Amdt 1C 11AUG22

31°20'N-92°33'W

# RNAV (GPS) RWY 14

SC-4, 19 FEB 2026 to 19 MAR 2026

SC-4, 19 FEB 2026 to 19 MAR 2026