

Flight Procedures Cover Page	Task Action: P-NOTAM	Task Type: IAP	Estimated Chart Date: 09/05/2024	APWS Task ID: 38E5F62C15574F1495C2B0709636766C	APWS Project ID: 6409FDB7BEF84D4B9630A5E6D7104660
Procedure: RNAV (GPS) RWY 23 AMDT 1C		Enroute: NO	Specialist: Hanby, William		Agreement Number:
Airport ID: KCNJ			Airport City: CANTON		State: GA
Facility ID:	Facility Type:	Flight Inspection Remark Type:			

Procedure Comments:  
PENDING AIRNAV DATA USED.

PROCESSED IAW TECHNICAL SUPPORT GROUP (AJF-17) MEMO DATED 07/07/2021, SUBJECT: GUIDANCE FOR PROCEDURAL CHANGES REQUIRING FLIGHT INSPECTION VALIDATION.

CONTACT CASIMIR L. TABAKA: (405) 954-9946.

PNOTAM:4/5671

J ZEDER 03/04/2024



# OLD

CANTON, GEORGIA

AL-6949 (FAA)

24025

WAAS CH <b>65923</b> <b>W23A</b>	APP CRS <b>227°</b>	Rwy Idg <b>5003</b> TDZE <b>1218</b> Apt Elev <b>1219</b>
--	------------------------	---

## RNAV (GPS) RWY 23

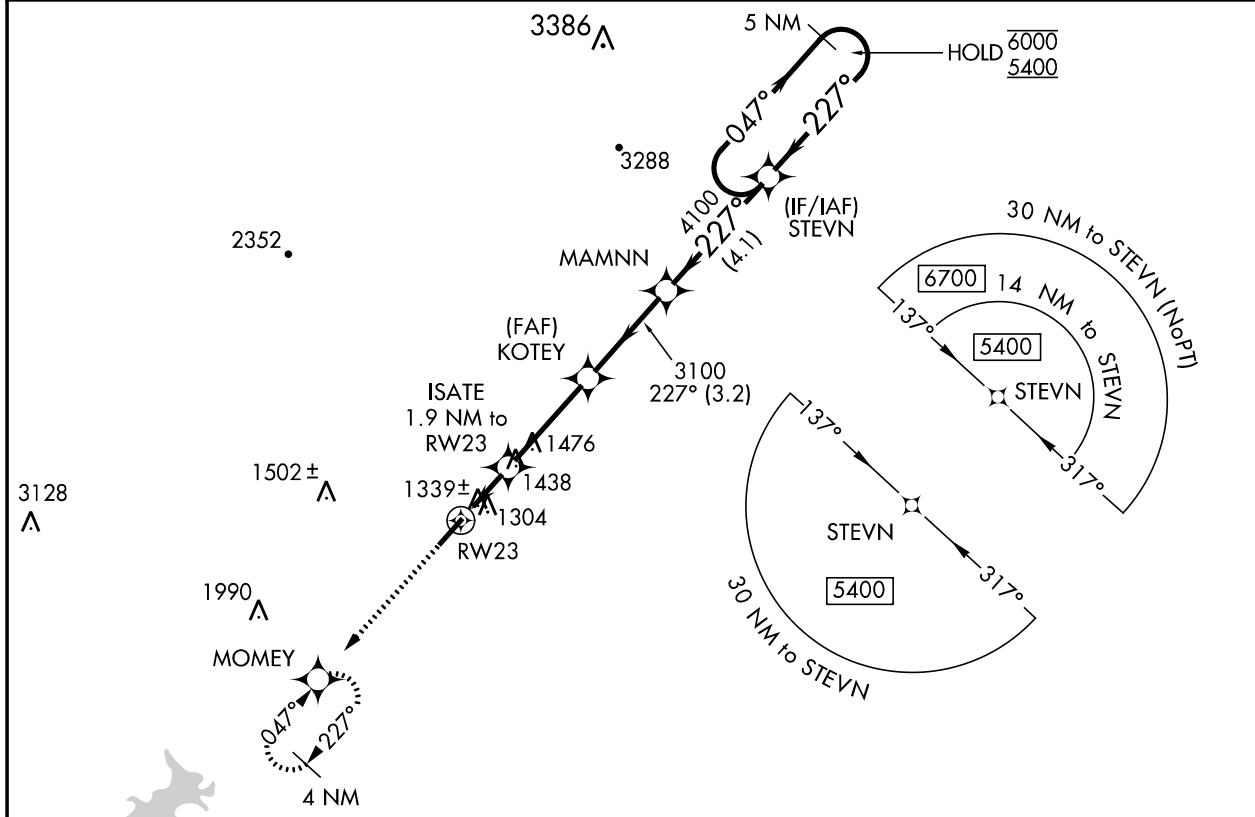
CHEROKEE COUNTY RGNL (CNI)

RNP APCH.

**⚠** Rwy 23 helicopter visibility reduction below 1 SM NA. When local altimeter setting not received, use Marietta altimeter setting and increase all MDA 80 feet; Increase LP and Circling Cat C visibility ¼ SM and LNAV Cat C visibility ⅛ SM. Straight-in Rwy 23 NA at night, Circling Rwy 23 NA at night.

**MISSED APPROACH:** Climb to 4000 direct MOMEY and hold, continue climb-in-hold to 4000.

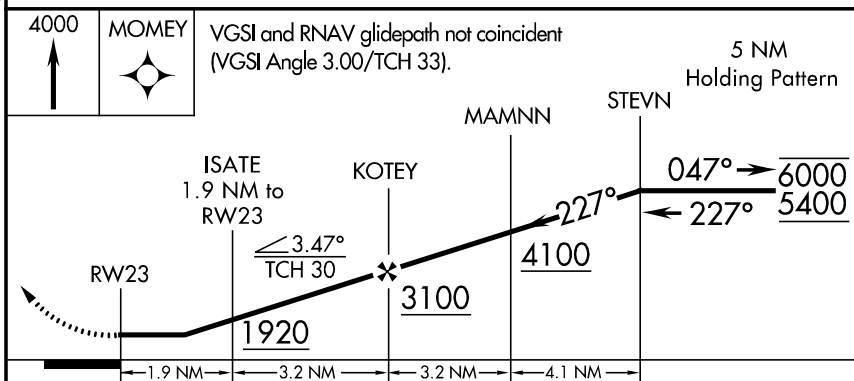
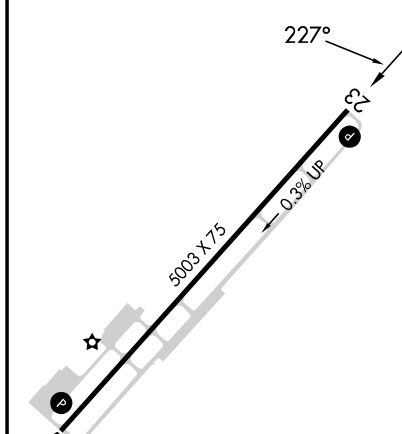
AWOS-3PT <b>119.825</b>	ATLANTA APP CON <b>121.0 268.7</b>	UNICOM <b>123.0 (CTAF) ①</b>
----------------------------	---------------------------------------	---------------------------------



SE-4, 22 FEB 2024 to 21 MAR 2024

SE-4, 22 FEB 2024 to 21 MAR 2024

ELEV 1219	TDZE 1218
-----------	-----------



		ISATE 1.9 NM to RW23	KOTEY	MAMNN	STEVN	
		1920	3100	4100	6000 5400	
		1.9 NM	3.2 NM	3.2 NM	4.1 NM	
CATEGORY		A	B	C	D	
LP MDA		1600-1	382 (400-1)	1600-1⅛ 382 (400-1⅛)	NA	
LNAV MDA		1740-1	522 (600-1)	1740-1⅝ 522 (600-1⅝)	NA	
<b>C</b> CIRCLING		1740-1	521 (600-1)	1820-1¾ 601 (700-1¾)	NA	

REIL Rwy 5 and 23 ①  
MIRL Rwy 5-23 ①

CANTON, GEORGIA  
Amdt 1B 25FEB21

34°19'N-84°25'W

## RNAV (GPS) RWY 23

CHEROKEE COUNTY RGNL (CNI)