

RNAV (GPS) RWY 5

BARTOW EXEC (BOW)

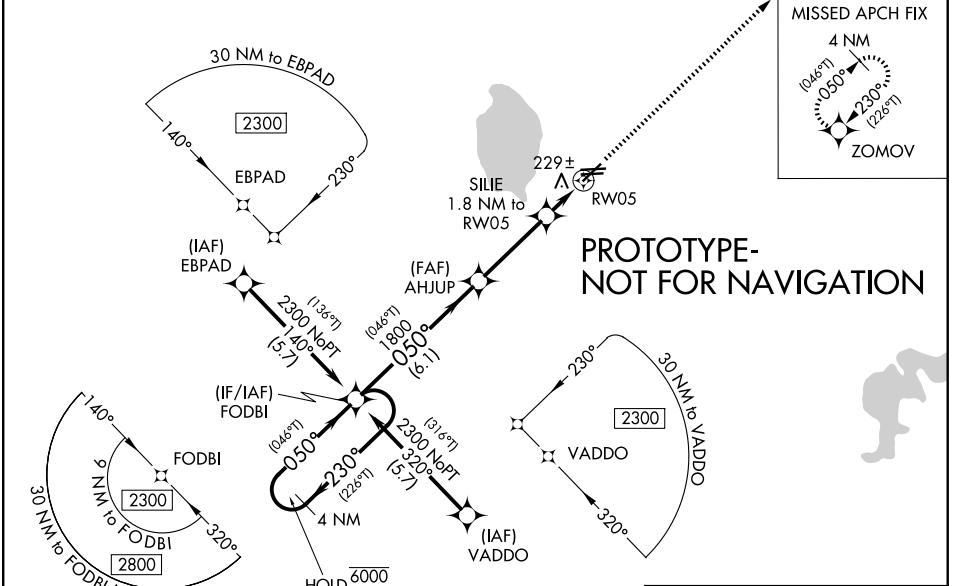
WAAS CH 58112 W05A	APP CRS 050°	Rwy Ldg TDZE Apt Elev	5001 123 125
--	------------------------	-----------------------------	---

RNP APCH - GPS.

▼ Rwy 5 helicopter visibility reduction below 3/4 SM NA. Baro-VNAV and VDP NA when using TPA altimeter setting. For uncompensated Baro-VNAV systems, LNAV/VNAV NA below -15°C or above 54°C. When local altimeter setting not received, use TPA altimeter setting and increase LPV DA to 556 feet, LNAV/VNAV DA to 618 feet and LNAV MDA 120 feet. Increase LPV and LNAV/VNAV all Cats visibility and LNAV Cat C/D visibility 1/4 SM.

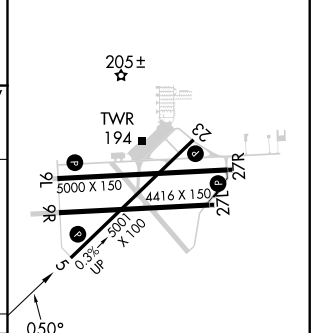
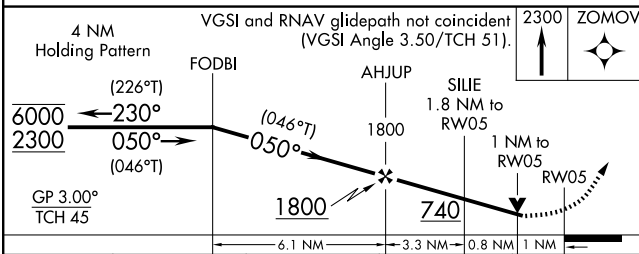
MISSED APPROACH:
Climb to 2300 direct ZOMOV and hold.

AWOS-3 123.775	TAMPA APP CON 120.65 290.3	BARTOW TOWER * 121.20 (CTAF)	GND CON 121.9	UNICOM 122.95
--------------------------	--------------------------------------	--	-------------------------	-------------------------



**PROTOTYPE-
NOT FOR NAVIGATION**

ELEV 125	TDZE 123
----------	----------



CATEGORY	A	B	C	D
LPV DA		447-1	324 (400-1)	
LNAV/VNAV DA		509-1 1/8	386 (400-1 1/8)	
LNAV MDA	520-1	397 (400-1)	520-1 1/8	397 (400-1 1/8)

MIRL Rwy 5-23 and 9L-27R
REIL Rwy 5, 23, 9L and 27R