

Flight Procedures Cover Page	Task Action: FLIGHT CHECK	Task Type: IAP	Estimated Chart Date: 12/26/2024	APWS Task ID: 3BE6711630494259ADF96CD2EBE16135	APWS Project ID: 5A2008DA6E2D4919AA11D147CCF0A4FF
Procedure: RNAV (GPS) RWY 35 AMDT 0G		Enroute: NO	Specialist: Young, Silvia		Agreement Number:
Airport ID: KLRO			Airport City: MOUNT PLEASANT		State: SC
Facility ID:	Facility Type:	Flight Inspection Remark Type: New FC Slot			
<p>Procedure Comments: ACTIVE DATA USED FOR KLRO AIRPORT AND RWYS.</p> <p>CLEAR T-NOTAM 2/4374.</p> <p>CONTACT CASIMIR TABAKA 405.202.7857</p>					

OLD

MOUNT PLEASANT, SOUTH CAROLINA

AL-6957 (FAA)

23166

RNAV (GPS) RWY 35

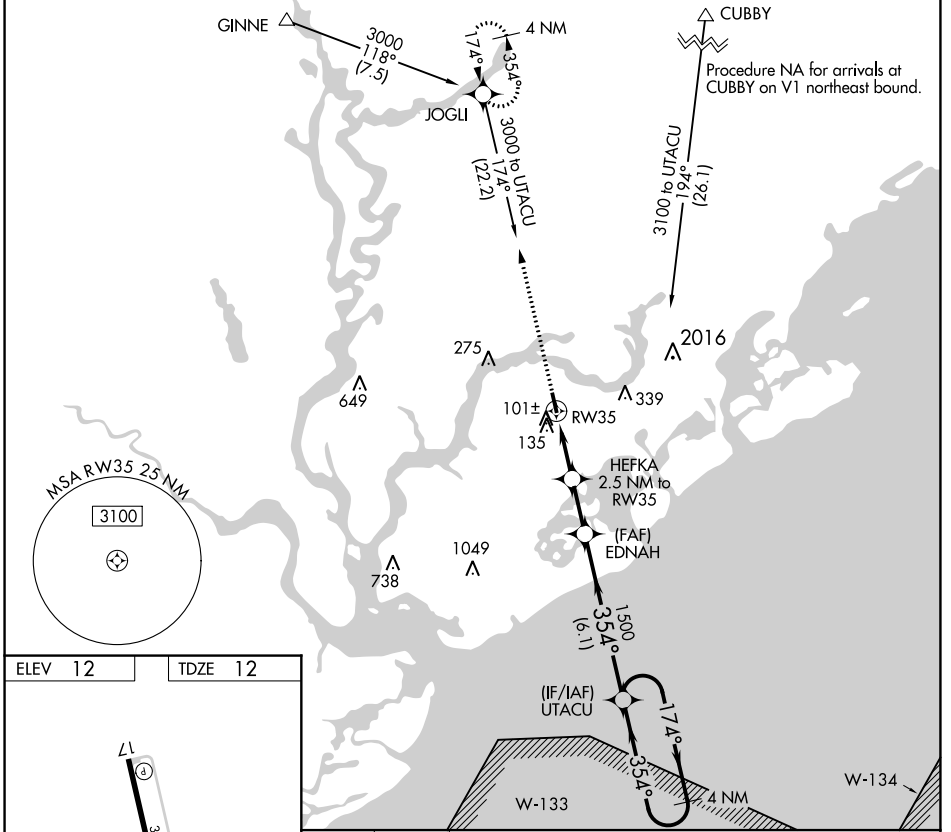
MT PLEASANT RGNL-FAISON FLD (L.R.O)

APP CRS	Rwy Idg	3700
354°	TDZE	12
	Apt Elev	12

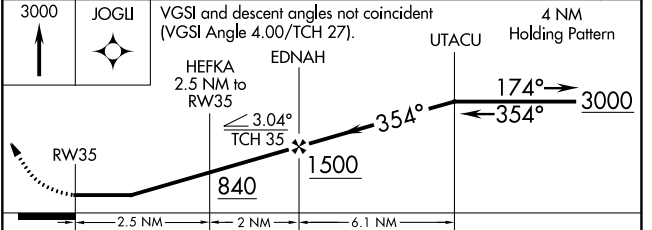
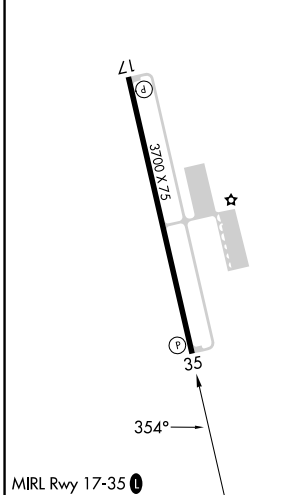
RNP APCH. MISSED APPROACH: Climb to 3000 direct JOGLI and hold, continue climb-in-hold to 3000.

⚠ When local altimeter setting not received, use Charleston AFB/Intl altimeter setting and increase all MDA 40 feet, and LNAV Cat C visibility 1/8 mile.

AWOS-3 118.625	CHARLESTON APP CON 121.275 379.925	UNICOM 122.7 (CTAF) 0
--------------------------	--	---------------------------------



ELEV 12	TDZE 12
---------	---------



CATEGORY	A	B	C	D
LNAV MDA	380-1 368 (400-1)			NA
CIRCLING	460-1 448 (500-1)	520-1 508 (600-1)	640-1 3/4 628 (700-1 3/4)	NA

MOUNT PLEASANT, SOUTH CAROLINA
Orig-F 20MAY21

32°54'N-79°47'W

RNAV (GPS) RWY 35

SE-2, 18 APR 2024 to 16 MAY 2024

SE-2, 18 APR 2024 to 16 MAY 2024

KLRO
MOUNT PLEASANT, SC
MT PLEASANT RGNL-FAISON FLD
LNAV FINAL & CIRCLING
1:100,000

Circling CAT C
TOWER (389) 45-001353

Circling CAT B
TOWER (163) 45-000634

Circling CAT A
TOWER (159) 45-020145

LNAV HEFKA to KLRO:RW35:AER
TOWER (135) 45-021466

LNAV EDNAH to HEFKA
AAO (204)

