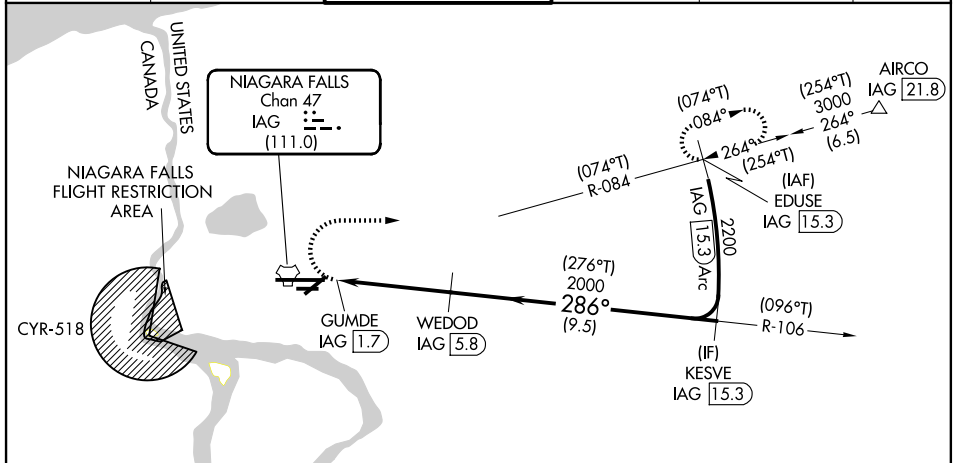


TACAN IAG Chan 47 <b>(111.0)</b>	APP CRS <b>286°</b>	Rwy Ldg TDZE Apt Elev <b>9129</b> <b>588</b> <b>592</b>
--	------------------------	--

# TACAN RWY 28

NIAGARA FALLS INTL (IAG)

<p><b>▼</b> Rwy 28 helicopter visibility reduction below RVR 4000 NA. Circling N/A for Cat E southeast of Rwy 6-24. For inop ALS, increase visibility Cats A/B RVR 5000, Cats C/D/E 1 3/8 SM.</p>		<p>MALSRL</p>	<p>MISSED APPROACH: Climbing right turn to 3000 on heading 100° and IAG TACAN R-084 to EDUSE/IAG 1.5.3 DME and hold, continue climb-in-hold to 3000.</p>		
ATIS <b>120.8 269.4</b>	BUFFALO APP CON <b>126.5 317.6</b>	NIAGARA TOWER* <b>118.5 (CTAF) 349.0</b>	GND CON <b>125.3 275.8</b>	CLNC DEL <b>119.25 251.1</b>	UNICOM <b>122.95</b>



PROTOTYPE-NOT FOR NAVIGATION



ELEV 592	<b>D</b>	TDZE 588						
			3000	hdg 100°	IAG R-084	EDUSE IAG 1.5.3	VGS1 and descent angles not coincident (VGS1 Angle 2.50/TCH 67).	
<p>TDZ/CL Rwy 28 (1)</p> <p>REIL Rwys 6 and 24 (1)</p> <p>HIRL Rwy 10-28 (1)</p> <p>MIRL Rwys 6-24 (1)</p>			CATEGORY	A	B	C	D	E
			S-28	1080/40	492 (500-3/4)	1080/50	492 (500-1)	
			CIRCLING	1100-1	508 (600-1)	1280-2 688 (700-2)	1280-2 1/4 688 (700-2 1/4)	1280-2 1/2 688 (700-2 1/2)