

Flight Procedures Cover Page	Task Action: FLIGHT CHECK	Task Type: IAP	Estimated Chart Date: 11/27/2025	APWS Task ID: 3C0FBFCF0CB040ECA4357215C9596F6D	APWS Project ID: CCF64601A0C44DABB273C2CBDCEBC9DE
Procedure: TACAN RWY 28 ORIG	Enroute: NO	Specialist: Armentrout, Britney	Agreement Number:		
Airport ID: KIAG	Airport City: NIAGARA FALLS		State: NY		
Facility ID: IAG	Facility Type: TACAN	Flight Inspection Remark Type: New FC Slot			

Procedure Comments:

RWY 10R/28L is DEACTIVATING .

PENDING KIAG AIRNAV, ACTIVE IAG TACAN DATA.

APPROVAL LETTER REQUESTED TO ESTABLISH A GPA EXCEEDING 0.2° GREATER THAN THE GPA OF THE VGSI.

CONTACT RAKE MCGRAW AJV-A422.

10/09/25: THIS IS AN UPDATED COPY OF THE FORM DEVELOPED ON 07/09/25.

1. CHANGED REQUIRED EFFECTIVE DATE FROM ROUTINE TO 11/27/25 - HARD DATED.





Federal Aviation Administration

Memorandum

Date: 06/12/2025
To: Flight Technologies and Procedures
From: Lonnie Everhart, Manager, Instrument Flight Procedures (IFP), AJV-A4
Subject: Approval Request: NIAGARA FALLS INTL (KIAG), TACAN RWY 28

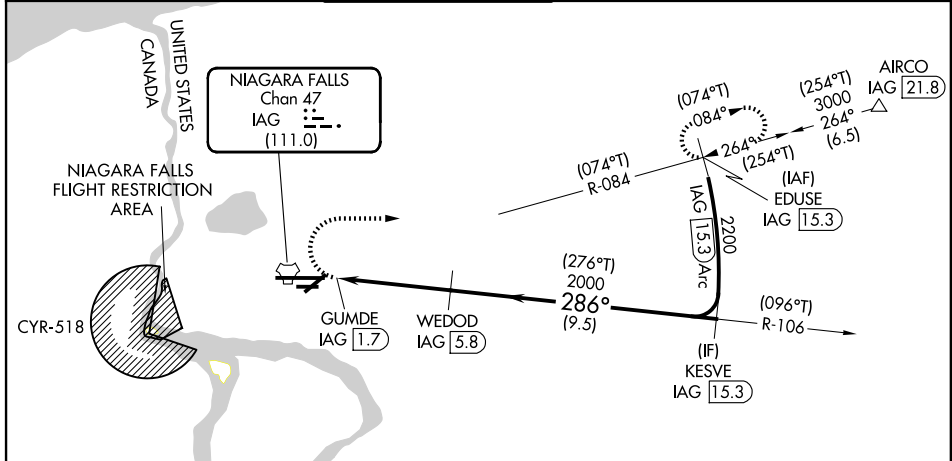
Request approval to establish a vertical descent angle (VDA) exceeding 0.2° greater than the VDA of the visual glideslope indicator (VGSi) installed for the runway (FAAO 8260.3E Para 2-6-2a). The final VDA of 2.81° is an Airport/ATC request while the VGSi angle is set at 2.5°

TACAN IAG Chan 47 (111.0)	APP CRS 286°	Rwy Ldg TDZE Apt Elev 9129 588 592
--	------------------------	--

TACAN RWY 28

NIAGARA FALLS INTL (IAG)

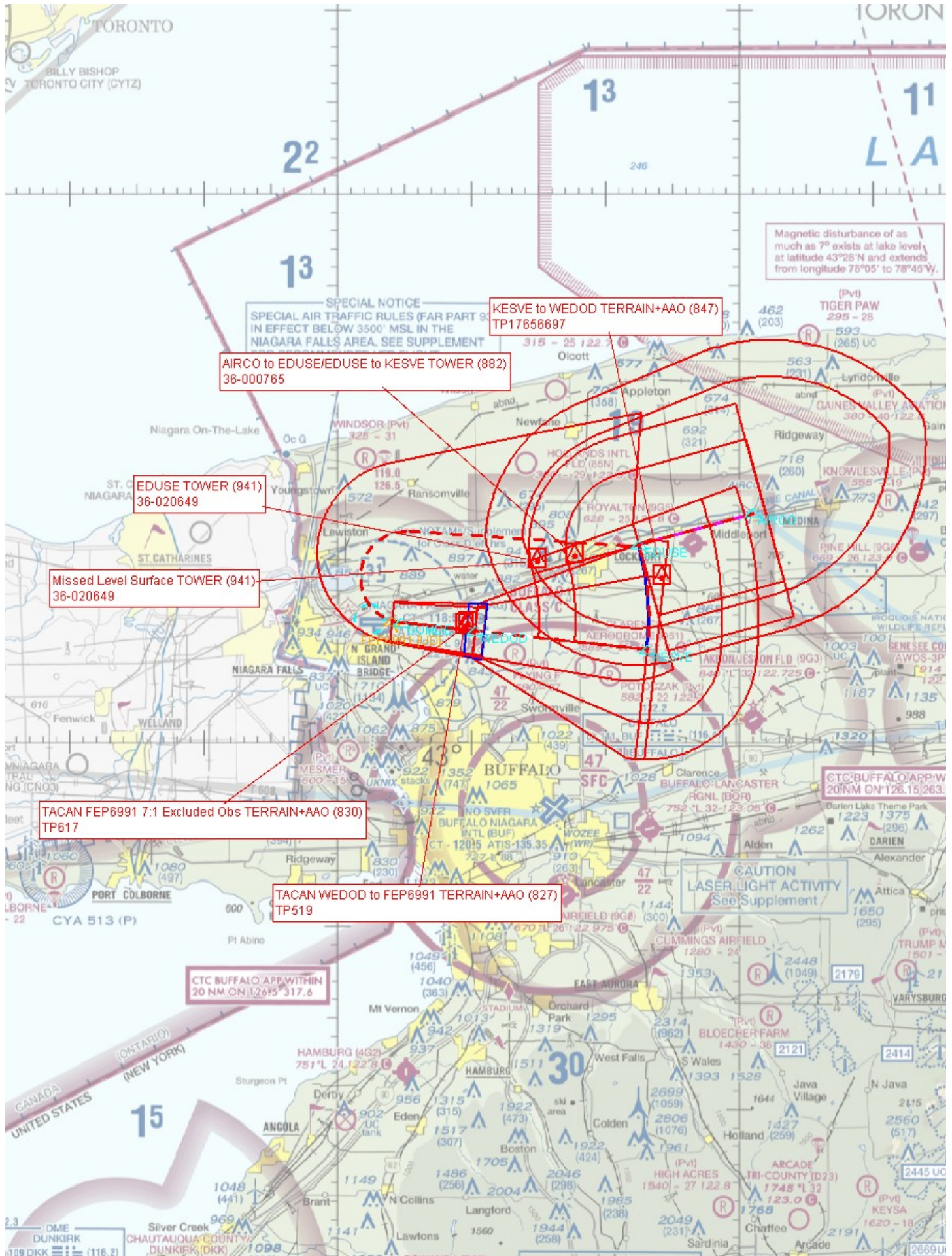
<p>▼ Rwy 28 helicopter visibility reduction below RVR 4000 NA. Circling NA for Cat E southeast of Rwy 6-24. For inop ALS, increase visibility Cats A/B RVR 5000, Cats C/D/E 1 3/8 SM.</p>		<p>MALSRL</p>	<p>MISSED APPROACH: Climbing right turn to 3000 on heading 100° and IAG TACAN R-084 to EDUSE/IAG 1.5.3 DME and hold, continue climb-in-hold to 3000.</p>		
ATIS 120.8 269.4	BUFFALO APP CON 126.5 317.6	NIAGARA TOWER* 118.5 (CTAF) 349.0	GND CON 125.3 275.8	CLNC DEL 119.25 251.1	UNICOM 122.95

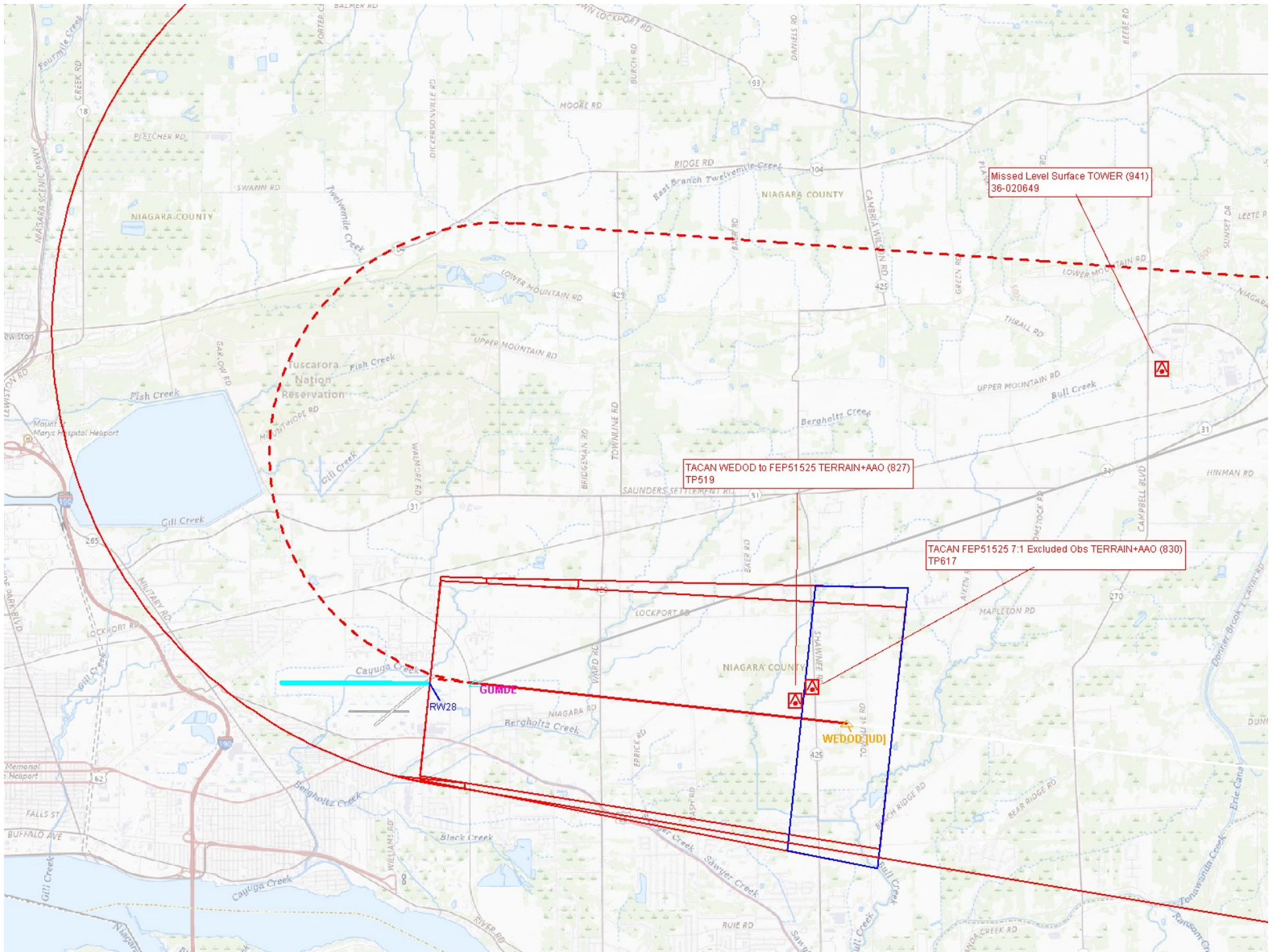


PROTOTYPE-NOT FOR NAVIGATION



ELEV 592	D	TDZE 588			
			<p>Emergency Safe Altitude 30 NM 5300</p>		
3000	hdg 100°	IAG R-084	EDUSE IAG 1.5.3	<p>VGSI and descent angles not coincident (VGSI Angle 2.50/TCH 67).</p>	
CATEGORY	A	B	C	D	E
S-28	1080/40	492 (500-3/4)	1080/50 492 (500-1)		
CIRCLING	1100-1 508 (600-1)		1280-2 688 (700-2)	1280-2 1/4 688 (700-2 1/4)	1280-2 1/2 688 (700-2 1/2)





Missed Level Surface TOWER (941)
36-020649

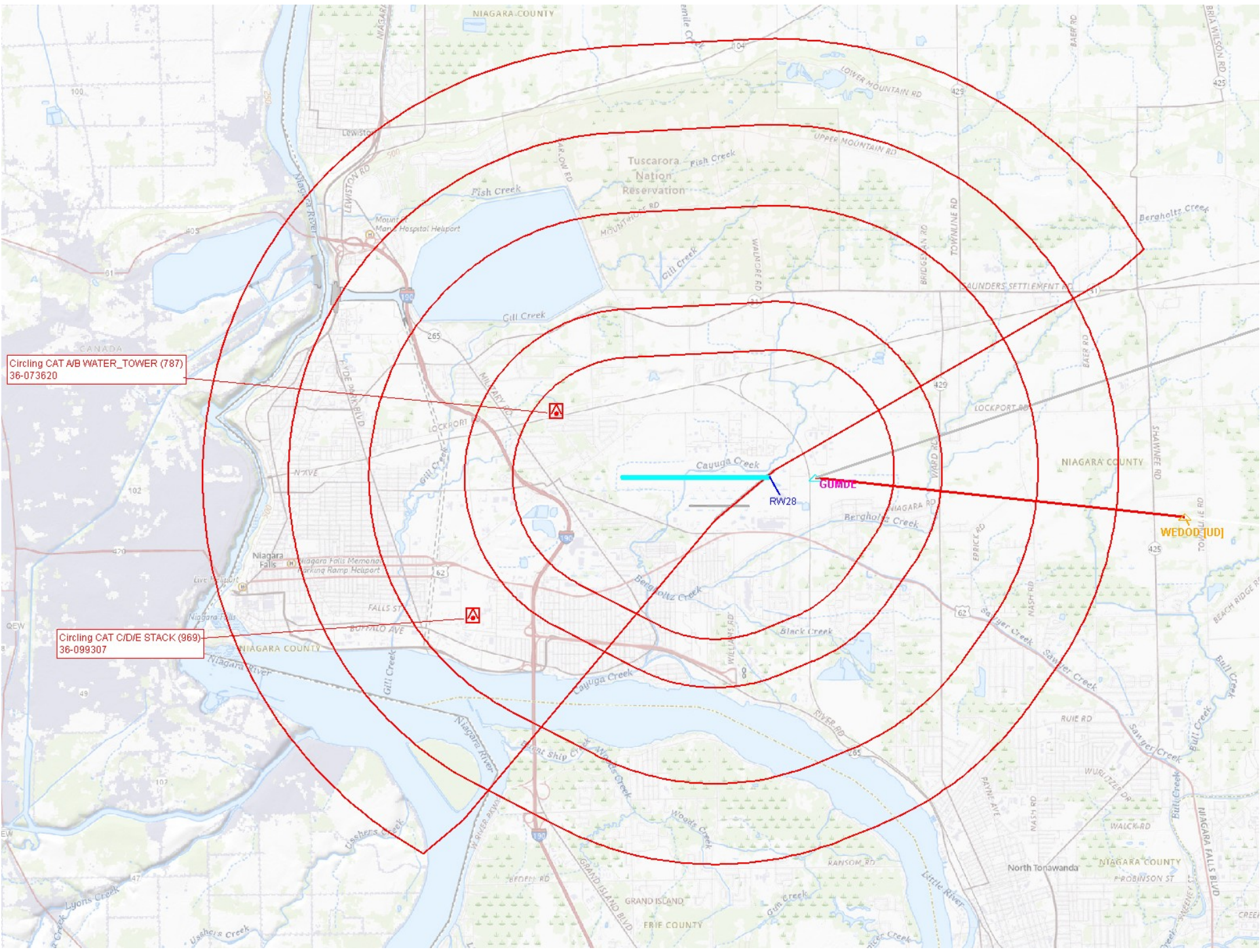
TACAN WEDOD to FEP51525 TERRAIN+AAO (827)
TP519

TACAN FEP51525 7.1 Excluded Obs TERRAIN+AAO (830)
TP617

GUMDE

RW28

WEDOD (UD)



Circling CAT A/B WATER_TOWER (787)
36-073620

Circling CAT C/D/E STACK (969)
36-099307

GUMBLE

RW28

WEDDUTUJ