

LOC/DME I-SLV <b>110.9</b> Chan <b>46</b>	APP CRS <b>126°</b>	Rwy Ldg TDZE Apt Elev	12R <b>8587</b> <b>46</b> <b>62</b>	12L <b>8831</b> <b>44</b> <b>62</b>
---	------------------------	-----------------------------	--	--

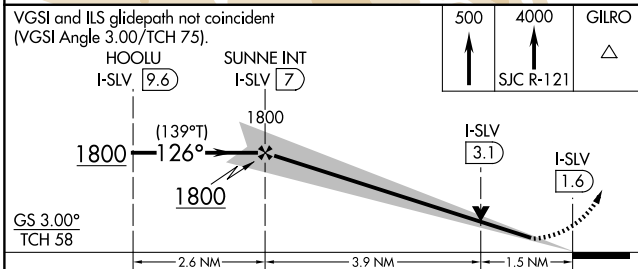
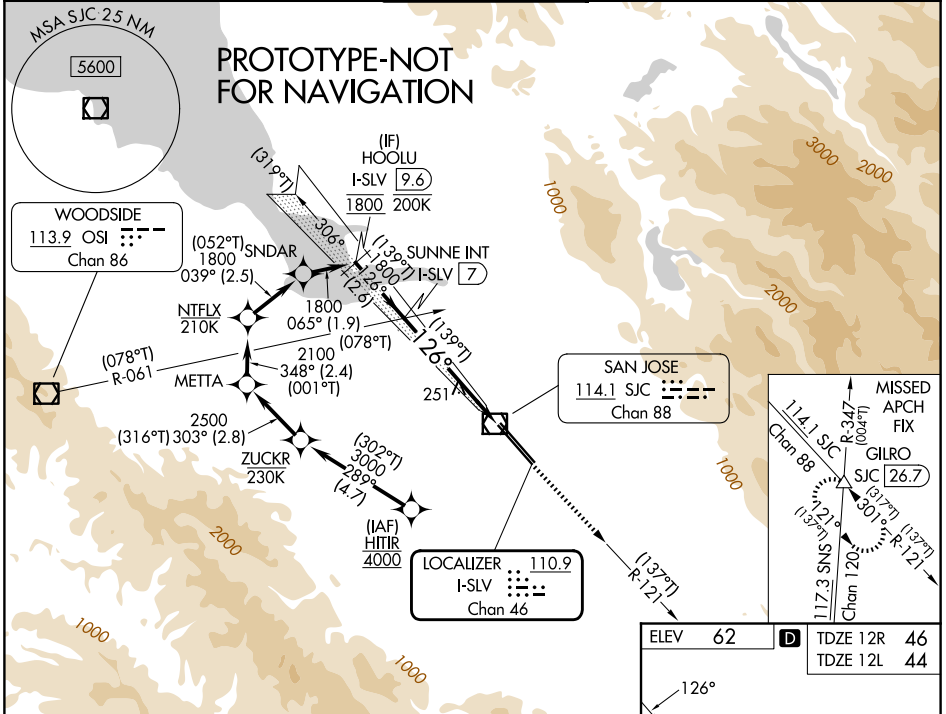
**ILS or LOC RWY 12R**  
NORMAN Y MINETA SAN JOSE INTL (SJC)

RNP APCH - GPs. From HITIR.  
DME or RADAR required.



MISSED APPROACH: Climb to 500 then climb to 4000 on SJC VOR/DME R-121 to GILRO/SJC 26.7 DME and hold.

D-ATIS <b>126.95</b>	NORCAL APP CON <b>120.1 290.25</b>	SAN JOSE TOWER ★ <b>124.0 (CTAF) 257.6</b>	GND CON <b>121.7</b>	UNICOM <b>122.95</b>
-------------------------	---------------------------------------	---	-------------------------	-------------------------



ELEV 62	TDZE 12R 46
	TDZE 12L 44

CATEGORY	A	B	C	D
S-ILS 12R	251/24		205 (200-½)	
S-LOC 12R	580/24	534 (600-½)	580/55	534 (600-1)
SIDESTEP RWY 12L	600-1	556 (600-1)	600-1½ 556 (600-1½)	600-2 556 (600-2)

