

## DME DME Assessment Results for FRDMM7 path LUISE\_DARIC

### Results Summary

Flyability:	Completed
DME/DME:	Completed - No Critical DMEs
Name:	David C-CTR Cook
Project File:	C:\Users\David C-CTR Cook\Documents\TARGETS WORK\DME-DME WORK\7-9-2026 PUBLICATION\FRDMM - TRUPS FOR JACOB\FRDMM7\DCA ONLY\TRUPS_FRDMM DCA ONLY DME-DME 20251212.tgs
Output File:	C:\Users\David C-CTR Cook\Documents\TARGETS WORK\DME-DME WORK\7-9-2026 PUBLICATION\FRDMM - TRUPS FOR JACOB\FRDMM7\DCA ONLY\KDCA [IFPA] FRDMM7 20260225_1240 EST\LUISE_DARIC\KDCA FRDMM7 RNAV STAR LUISE DARIC 20260225_1240 EST.pdf
Procedure Name:	FRDMM7
Software: DmeDmePlugin:	7.6.0
Date/Time:	02/25/2026 12:40 EST
Databases:	MITRE 3DEP 3 arcsec

### Failures

No Failures

### Warnings

No Warnings

### Informational

No Informational

### Notes For Flight Check

None

### Flight Plan

Name	Type	Lat/Lon	Altitude (ft)	VNAV Mode	Ground Speed (kts)	Turn Type	Leg Type
LUISE	WP	N39° 34' 27.3900", W080° 41' 54.6500"	8000	VNAV	280	FLY_BY	TF
BUCKO	WP	N39° 17' 37.8200", W079° 49' 30.1000"	8000	VNAV	280	FLY_BY	TF
DRRON	WP	N39° 16' 22.1200", W079° 33' 35.8600"	8000	VNAV	280	FLY_BY	TF
HONNR	WP	N39° 14' 46.5900", W079° 14' 08.9100"	8000	VNAV	280	FLY_BY	TF
BRVRY	WP	N39° 13' 22.6800", W078° 57' 47.1800"	8000	VNAV	280	FLY_BY	TF
COURG	WP	N39° 12' 01.1400", W078° 43' 44.5200"	8000	VNAV	280	FLY_BY	TF
PLDGE	WP	N39° 09' 51.3300", W078° 21' 58.7200"	8000	VNAV	280	FLY_BY	TF
WEWIL	WP	N39° 06' 05.9800", W078° 06' 51.7600"	8000	VNAV	250	FLY_BY	TF
NEVVR	WP	N39° 04' 13.2900", W077° 59' 30.1700"	8000	VNAV	250	FLY_BY	TF
FORGT	WP	N39° 02' 07.3400", W077° 51' 19.2500"	8000	VNAV	250	FLY_BY	TF
SEPII	WP	N39° 00' 33.1200", W077° 45' 13.7400"	8000	VNAV	250	FLY_BY	TF
ALWYZ	WP	N38° 59' 00.6600", W077° 39' 16.5400"	8000	VNAV	250	FLY_BY	TF
FRDMM	WP	N38° 56' 34.5400", W077° 31' 01.3900"	8000	VNAV	240	FLY_BY	TF
STAND	WP	N39° 00' 16.1700", W077° 19' 57.8400"	2000	VNAV	200	FLY_BY	TF
TGTHR	WP	N39° 02' 08.4100", W077° 14' 23.6900"	2000	VNAV	200	FLY_BY	TF
DARIC	WP	N38° 57' 54.0450", W077° 09' 11.4840"	2000	VNAV	200	FLY_OVER	TF

## DME DME Assessment Results for FRDMM7 path LUISE\_DARIC

<b>Flyability</b>	
Flight Type:	RNAV_STAR
Selected Airport:	KDCA [IFPA]
Climb Gradient:	None assigned
Speeds:	200 Ground Speed to 11000 FT
	240 Ground Speed to 18000 FT
	260 Ground Speed to 24000 FT
	340 Ground Speed above 24000 FT
Descent During a Turn:	Allowed
VNAV Mode:	Flight Plan

<b>DME/DME</b>	
RNP:	RNP 2
Flight Mode:	Manual
Line of Sight (DTED Level 0 Max):	Evaluated
Inertial Drift:	Enabled
Initial Drift:	0.558 NM
INS Drift Rate:	8.0 NM/Hour
Range Mode:	OSV
RNP Edges:	Evaluated
Min DME Range:	3.0 NM
DME Types:	DME, VOR-DME, VORTAC, TACAN
DME Include Angles:	30 to 150
Critical DMEs:	Allowed
DoD Facilities:	Not included
Foreign Facilities:	Not included
High DMEs:	Included
Low DMEs:	Included
Terminal DMEs:	Included
Flight Check DMEs:	Not selected
Higher Altitudes:	Not Evaluated
Near Maximum Altitude:	Not Evaluated
Automatic ESVs:	Not enabled
Disabled DMEs:	None

**DME DME Assessment Results for FRDMM7 path LUISE\_DARIC**

<b>DME/DME (Continued)</b>										
<b>DMEs Used</b>										
<b>#</b>	<b>Name</b>	<b>Lat/Lon</b>	<b>MAGVAR</b>	<b>Range</b>	<b>Type</b>	<b>Source</b>	<b>Critical</b>	<b>Status</b>	<b>Time</b>	<b>Distance</b>
1	AML	N38° 56' 04.5329", W077° 28' 00.1263"	8.0 W	40	L		NO	Enabled	32.3 %	29.4 %
2	EMI	N39° 29' 42.0266", W076° 58' 42.8591"	8.0 W	130	H		NO	Enabled	11.1 %	8.8 %
3	DCA	N38° 51' 34.0300", W077° 02' 11.1700"	9.0 W	40	L		NO	Enabled	24.2 %	21.1 %
4	BSV	N40° 44' 26.5430", W081° 25' 55.6216"	4.0 W	130	DL		NO	Enabled	7.9 %	8.3 %
5	EKN	N38° 54' 51.9690", W080° 05' 57.3810"	7.0 W	40	L		NO	Enabled	26 %	27.4 %
6	AIR	N40° 00' 59.7814", W080° 49' 01.9382"	7.0 W	130	H		NO	Enabled	8.1 %	8.5 %
7	GRV	N39° 38' 06.2400", W079° 03' 02.0400"	0.0 E	40	L		NO	Enabled	28.2 %	29.7 %
8	FDK	N39° 24' 44.0499", W077° 22' 30.4179"	8.0 W	40	L		NO	Enabled	21.9 %	20.3 %
9	BAL	N39° 10' 15.8283", W076° 39' 40.5225"	11.0 W	40	L		NO	Enabled	12.3 %	9.9 %
10	JPU	N39° 26' 28.2493", W081° 22' 29.1377"	3.0 W	40	L		NO	Enabled	3.6 %	3.8 %
11	OTT	N38° 42' 21.1352", W076° 44' 41.0854"	10.0 W	40	L		NO	Enabled	4.8 %	4.4 %
12	ADW	N38° 48' 25.9900", W076° 51' 58.5200"	10.0 W	40	L		NO	Enabled	19 %	16.2 %
13	ZZV	N39° 56' 27.0911", W081° 53' 33.3687"	0.0 E	130	DH		NO	Enabled	18.7 %	19.7 %
14	LDN	N38° 51' 15.8344", W078° 12' 20.0559"	6.0 W	40	L		NO	Enabled	35.6 %	34.9 %
15	CKB	N39° 15' 11.5841", W080° 16' 04.3018"	4.0 W	40	L		NO	Enabled	34.2 %	36.1 %
16	MGW	N39° 33' 24.1749", W079° 51' 37.4843"	5.0 W	40	L		NO	Enabled	41 %	43.2 %
17	MRB	N39° 23' 08.0600", W077° 50' 54.0820"	7.0 W	40	L		NO	Enabled	36.9 %	36 %
18	ESL	N39° 13' 31.7740", W078° 59' 22.2000"	6.0 W	130	DL		NO	Enabled	81.1 %	83.3 %
19	CSN	N38° 38' 28.3277", W077° 51' 55.7979"	6.0 W	130	H		NO	Enabled	19.7 %	18.3 %

**DME DME Assessment Results for FRDMM7 path LUISE\_DARIC**

<b>Flight Check DME Selection</b>						
<b>Distance [NM]</b>	<b>Selected DMEs</b>					<b>Alternate</b>
0.0	AIR	JPU	BSV	CKB	ZZV	
6.7	AIR	MGW	BSV	CKB	ESL	ZZV
14.6	EKN	MGW	CKB	AIR	ESL	ZZV
14.9	EKN	MGW	CKB	ESL	ZZV	
34.5	ESL	EKN	MGW	CKB		
49.1	GRV	MGW	CKB	ESL	EKN	
62.3	GRV	MGW	ESL	CKB		
62.9	GRV	MGW	ESL			
75.8	ESL	GRV				
80.1						
88.1	ESL	GRV				
100.1	MRB	GRV	LDN	ESL		
105.9	MRB	LDN				
106.0	MRB	LDN	GRV	ESL		
109.1	MRB	LDN	ESL			
116.8	ESL	LDN	MRB	AML		
128.2	MRB	AML	LDN	ESL	FDK	
153.7	FDK	ADW	DCA	OTT	ESL	CSN
154.3	FDK	DCA	ADW	ESL	MRB	CSN
155.7	FDK	DCA	ADW	MRB	CSN	LDN
160.9	MRB	CSN	AML	OTT	EMI	DCA
162.9	EMI	DCA	OTT	ADW	FDK	BAL
163.7	ADW	EMI	DCA	BAL		
164.4	ADW	EMI	DCA	AML	BAL	

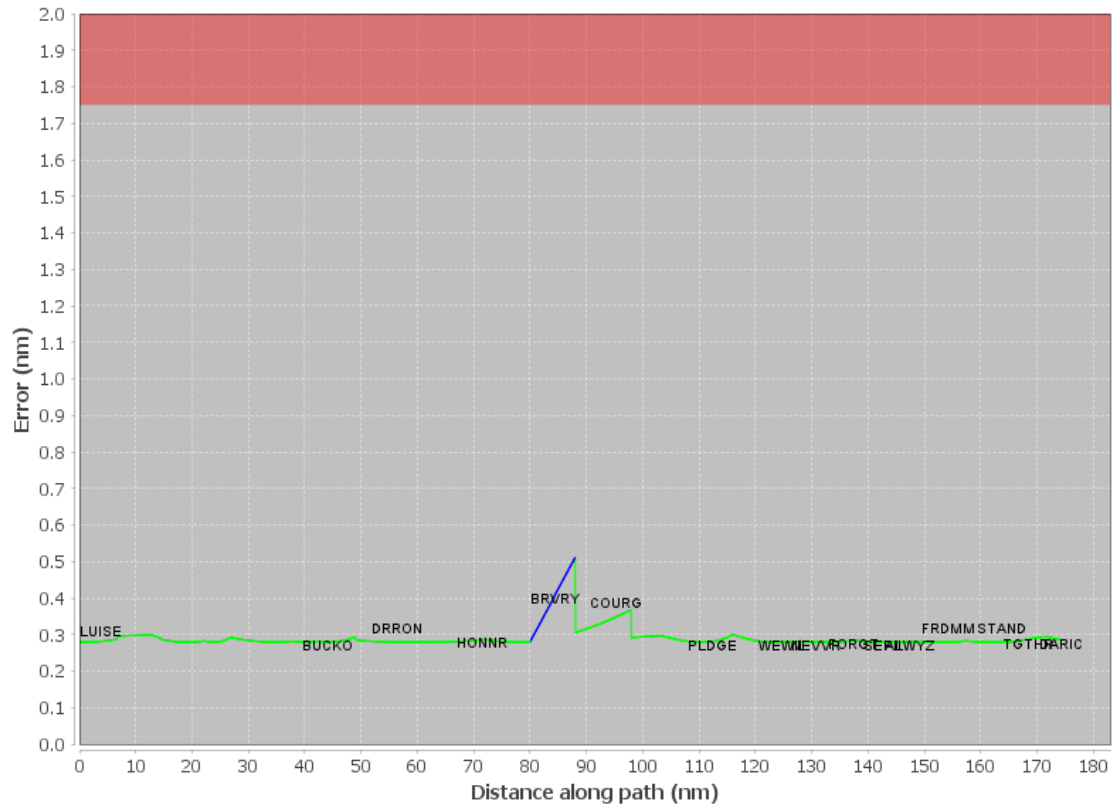
<b>Inertial Drift Segments</b>			
<b>#</b>	<b>Start Location</b>	<b>End Location</b>	<b>Length [NM]</b>
1	N39° 13' 50.9054", W079° 03' 14.3510"	N39° 12' 55.3067", W078° 53' 02.2767"	7.969

<b>Available DMEs by Waypoints</b>			
<b>Waypoint Before</b>	<b>Waypoint After</b>	<b>DME List</b>	<b>Suggested DMEs</b>
LUISE	BUCKO	BSV, ZZV, EKN, AIR, CKB, MGW, JPU, ESL	
BUCKO	DRRON	EKN, GRV, CKB, MGW, ESL	
DRRON	HONNR	EKN, GRV, CKB, MGW, ESL	
HONNR	BRVRY	GRV, MGW, ESL	
BRVRY	COURG	GRV, ESL	
COURG	PLDGE	LDN, GRV, MRB, ESL	
PLDGE	WEWIL	AML, LDN, MRB, ESL	
WEWIL	NEVVR	AML, LDN, MRB, FDK, ESL	
NEVVR	FORGT	AML, LDN, MRB, FDK, ESL, CSN	
FORGT	SEPII	AML, DCA, LDN, MRB, FDK, ESL, CSN	
SEPII	ALWYZ	AML, DCA, ADW, LDN, MRB, FDK, ESL, CSN	
ALWYZ	FRDMM	AML, DCA, ADW, LDN, MRB, FDK, OTT, ESL, CSN	
FRDMM	STAND	EMI, AML, DCA, ADW, LDN, MRB, FDK, BAL, OTT, ESL, CSN	
STAND	TGTHR	EMI, AML, DCA, ADW, BAL	
TGTHR	DARIC	AML, EMI, DCA, ADW, BAL	

<b>User Data Files</b>								
<b>#</b>	<b>File Name</b>							
None								
<b>User DMEs</b>								
<b>#</b>	<b>Name</b>	<b>Lat/Lon</b>	<b>MAGVAR</b>	<b>Range</b>	<b>Elevation [ft]</b>	<b>Frequency</b>	<b>Replaces</b>	<b>Status</b>
None								

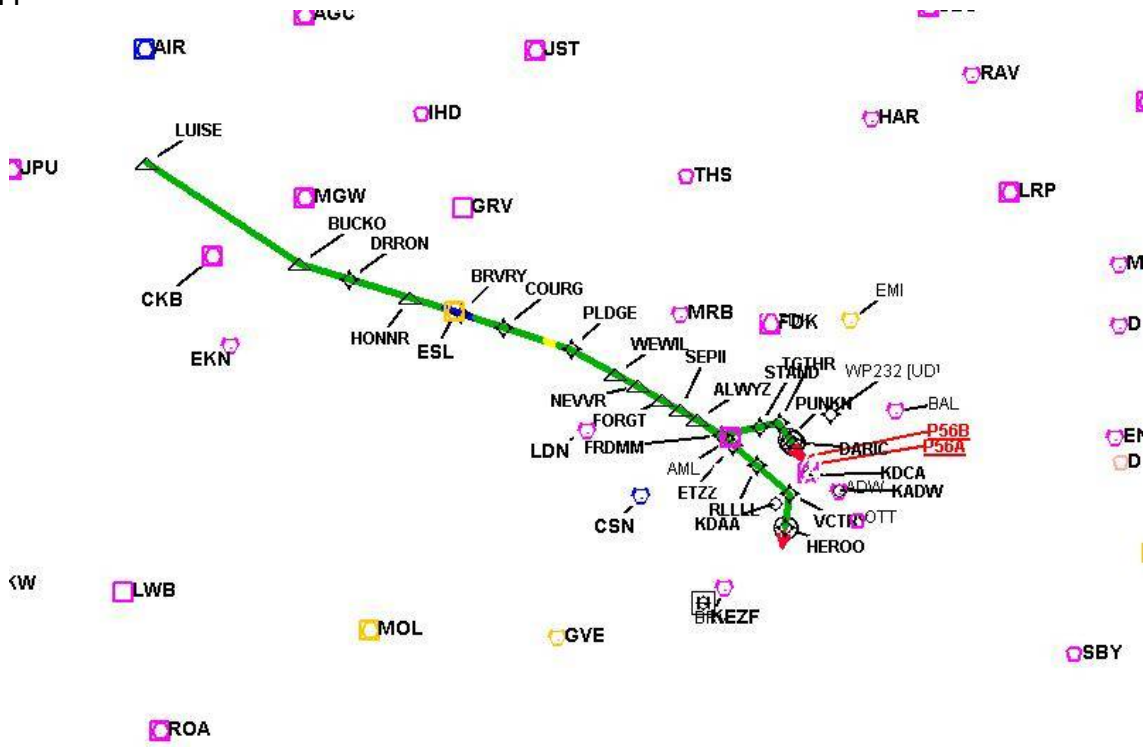
# DME DME Assessment Results for FRDMM7 path LUISE\_DARIC

## DME Error



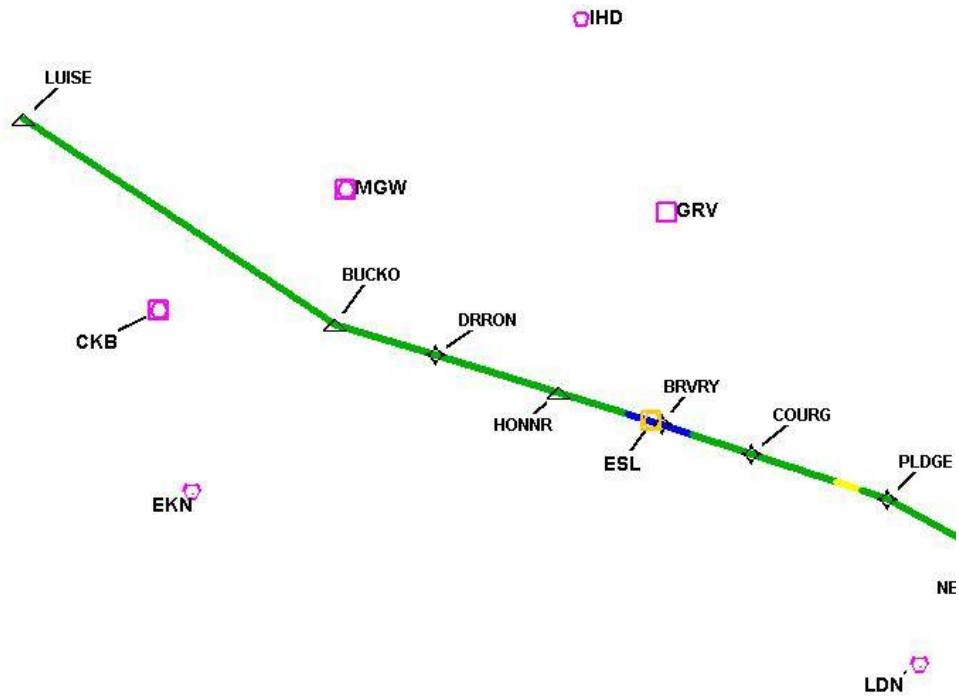
# DME DME Assessment Results for FRDMM7 path LUISE\_DARIC

Graphic Depiction 1



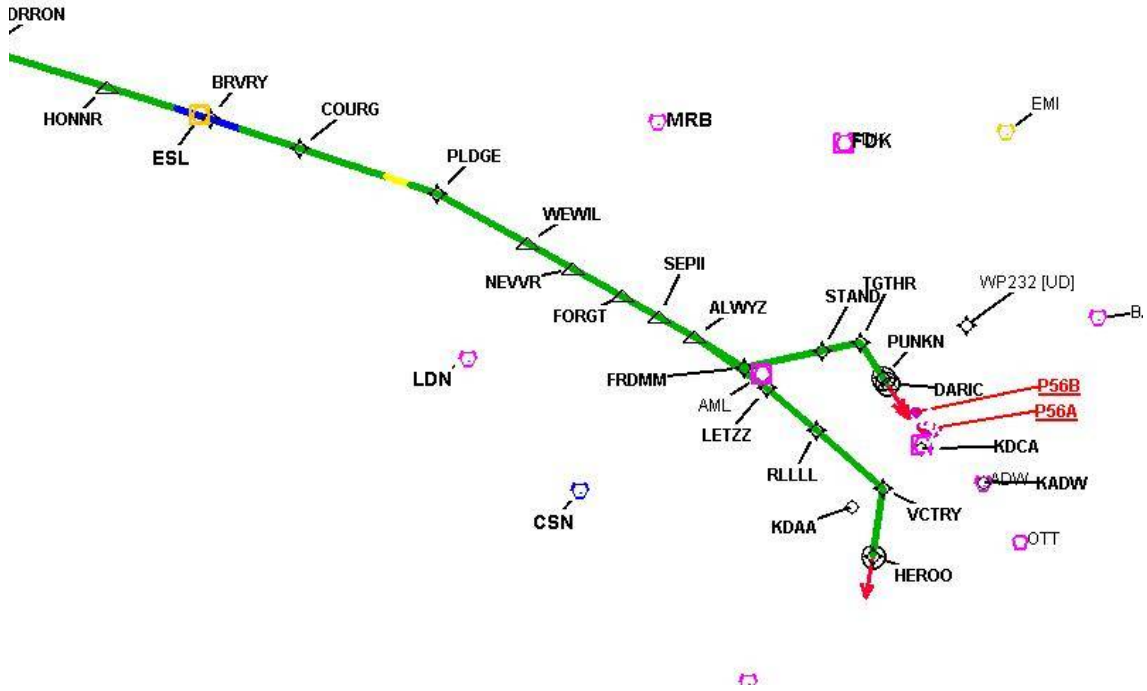
# DME DME Assessment Results for FRDMM7 path LUISE\_DARIC

Graphic Depiction 2



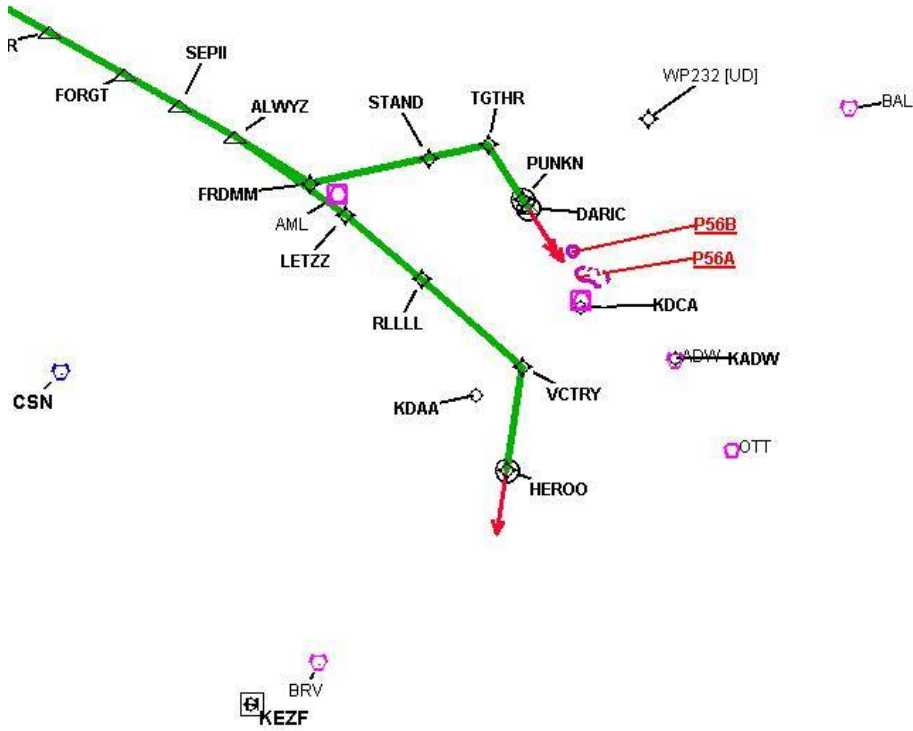
# DME DME Assessment Results for FRDMM7 path LUISE\_DARIC

Graphic Depiction 3



# DME DME Assessment Results for FRDMM7 path LUISE\_DARIC

Graphic Depiction 4



## DME DME Assessment Results for FRDMM7 path TGTHR\_PUNKN

### Results Summary

Flyability:	Completed
DME/DME:	Completed - No Critical DMEs
Name:	David C-CTR Cook
Project File:	C:\Users\David C-CTR Cook\Documents\TARGETS WORK\DME-DME WORK\17-9-2026 PUBLICATION\FRDMM - TRUPS FOR JACOB\FRDMM7\DCA ONLY\TRUPS_FRDMM DCA ONLY DME-DME 20251212.tgs
Output File:	C:\Users\David C-CTR Cook\Documents\TARGETS WORK\DME-DME WORK\17-9-2026 PUBLICATION\FRDMM - TRUPS FOR JACOB\FRDMM7\DCA ONLY\KDCA [IFPA] FRDMM7 20260225_1240 EST\TGTHR_PUNKN\KDCA FRDMM7 RNAV STAR TGTHR PUNKN 20260225_1240 EST.pdf
Procedure Name:	FRDMM7
Software: DmeDmePlugin:	7.6.0
Date/Time:	02/25/2026 12:40 EST
Databases:	MITRE 3DEP 3 arcsec

### Failures

No Failures

### Warnings

No Warnings

### Informational

No Informational

### Notes For Flight Check

None

### Flight Plan

Name	Type	Lat/Lon	Altitude (ft)	VNAV Mode	Ground Speed (kts)	Turn Type	Leg Type
TGTHR	WP	N39° 02' 08.4100", W077° 14' 23.6900"	2000	VNAV	200	FLY_BY	TF
PUNKN	WP	N38° 58' 29.9929", W077° 09' 59.1523"	2000	VNAV	200	FLY_OVER	TF

### Flyability

Flight Type:	RNAV_STAR
Selected Airport:	KDCA [IFPA]
Climb Gradient:	None assigned
Speeds:	200 Ground Speed to 11000 FT
	240 Ground Speed to 18000 FT
	260 Ground Speed to 24000 FT
	340 Ground Speed above 24000 FT
Descent During a Turn:	Allowed
VNAV Mode:	Flight Plan

## DME DME Assessment Results for FRDMM7 path TGTHR\_PUNKN

DME/DME	
RNP:	RNP 2
Flight Mode:	Manual
Line of Sight (DTED Level 0 Max):	Evaluated
Inertial Drift:	Enabled
Initial Drift:	0.558 NM
INS Drift Rate:	8.0 NM/Hour
Range Mode:	OSV
RNP Edges:	Evaluated
Min DME Range:	3.0 NM
DME Types:	DME, VOR-DME, VORTAC, TACAN
DME Include Angles:	30 to 150
Critical DMEs:	Allowed
DoD Facilities:	Not included
Foreign Facilities:	Not included
High DMEs:	Included
Low DMEs:	Included
Terminal DMEs:	Included
Flight Check DMEs:	Not selected
Higher Altitudes:	Not Evaluated
Near Maximum Altitude:	Not Evaluated
Automatic ESVs:	Not enabled
Disabled DMEs:	None

DME/DME (Continued)										
DMEs Used										
#	Name	Lat/Lon	MAGVAR	Range	Type	Source	Critical	Status	Time	Distance
1	AML	N38° 56' 04.5329", W077° 28' 00.1263"	8.0 W	40	L		NO	Enabled	100 %	100 %
2	EMI	N39° 29' 42.0266", W076° 58' 42.8591"	8.0 W	130	H		NO	Enabled	100 %	100 %
3	DCA	N38° 51' 34.0300", W077° 02' 11.1700"	9.0 W	40	L		NO	Enabled	100 %	100 %
4	ADW	N38° 48' 25.9900", W076° 51' 58.5200"	10.0 W	40	L		NO	Enabled	100 %	100 %
5	BAL	N39° 10' 15.8283", W076° 39' 40.5225"	11.0 W	40	L		NO	Enabled	100 %	100 %

Flight Check DME Selection						
Distance [NM]	Selected DMEs					Alternate
0.0	AML	DCA	ADW	EMI	BAL	

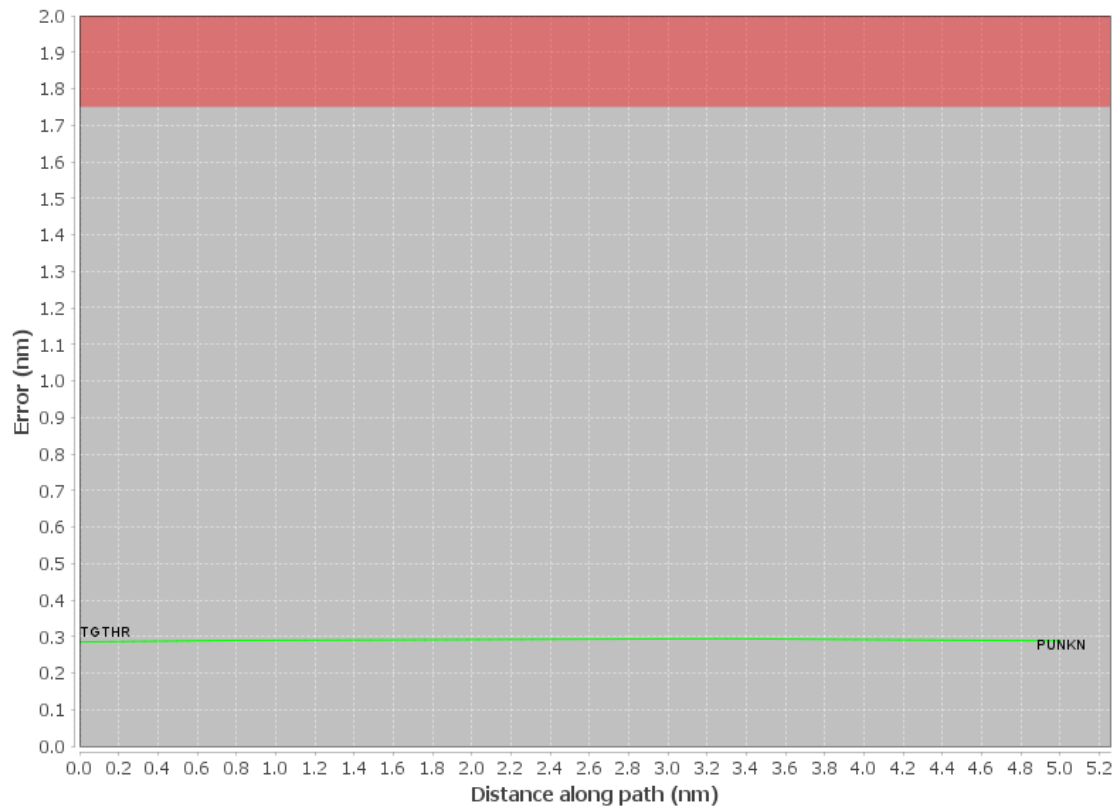
Inertial Drift Segments			
#	Start Location	End Location	Length [NM]

Available DMEs by Waypoints			
Waypoint Before	Waypoint After	DME List	Suggested DMEs
TGTHR	PUNKN	AML, EMI, DCA, ADW, BAL	

User Data Files								
#	File Name							
	None							
User DMEs								
#	Name	Lat/Lon	MAGVAR	Range	Elevation [ft]	Frequency	Replaces	Status
	None							

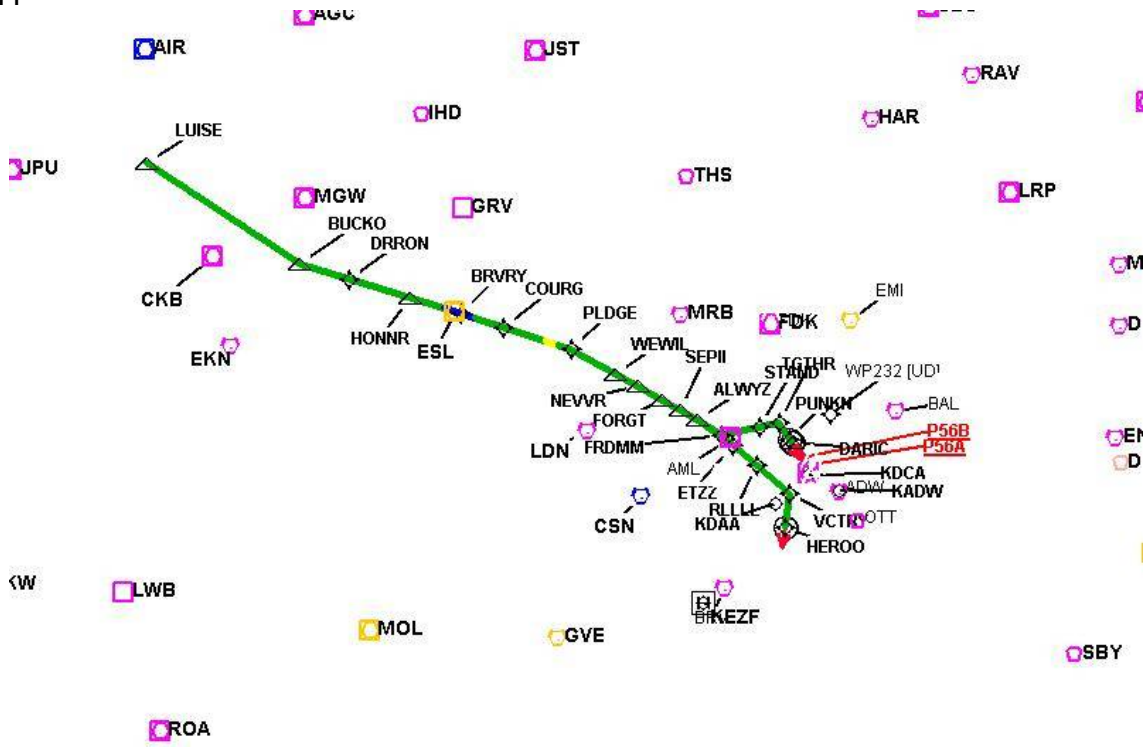
# DME DME Assessment Results for FRDMM7 path TGTHR\_PUNKN

## DME Error



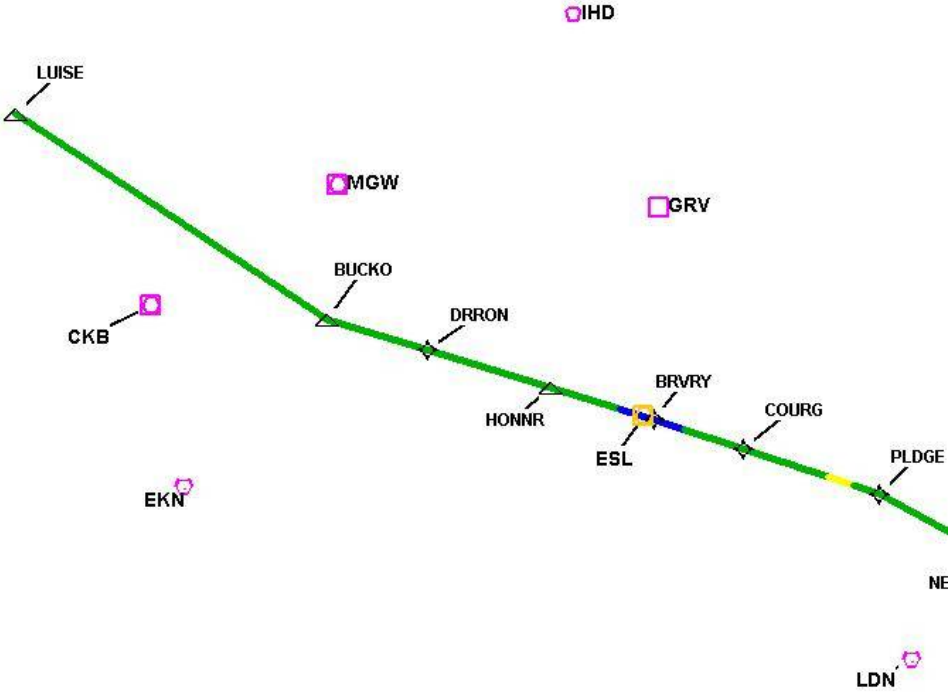
# DME DME Assessment Results for FRDMM7 path TGTHR\_PUNKN

Graphic Depiction 1



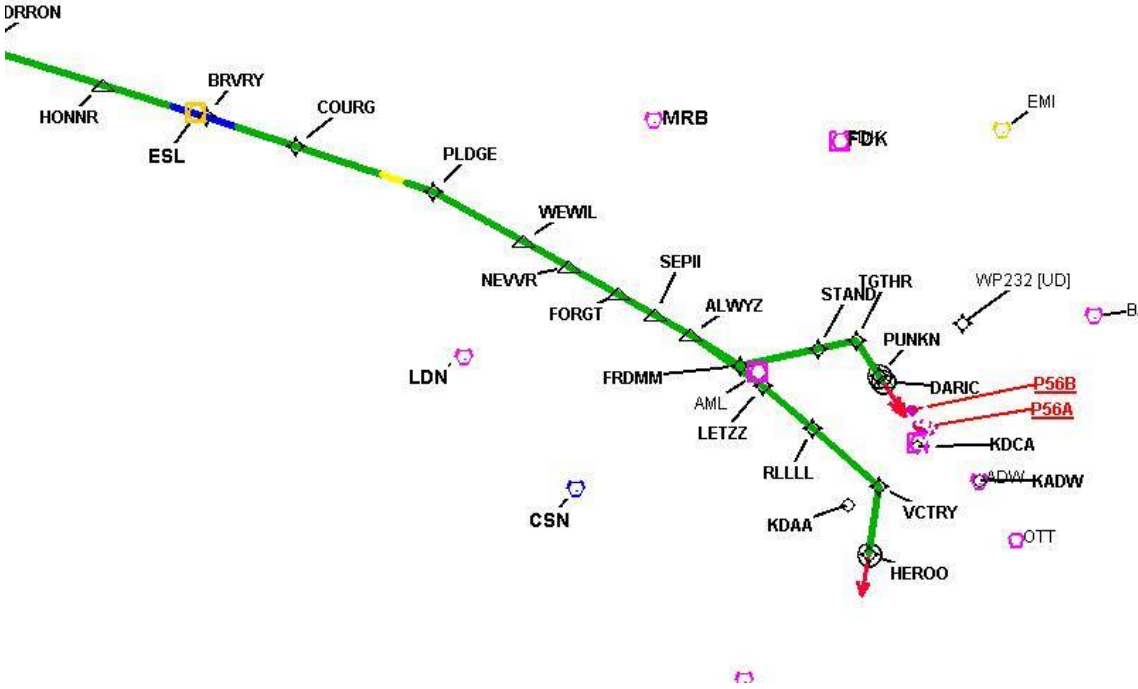
DME DME Assessment Results for FRDMM7 path TGTHR\_PUNKN

Graphic Depiction 2



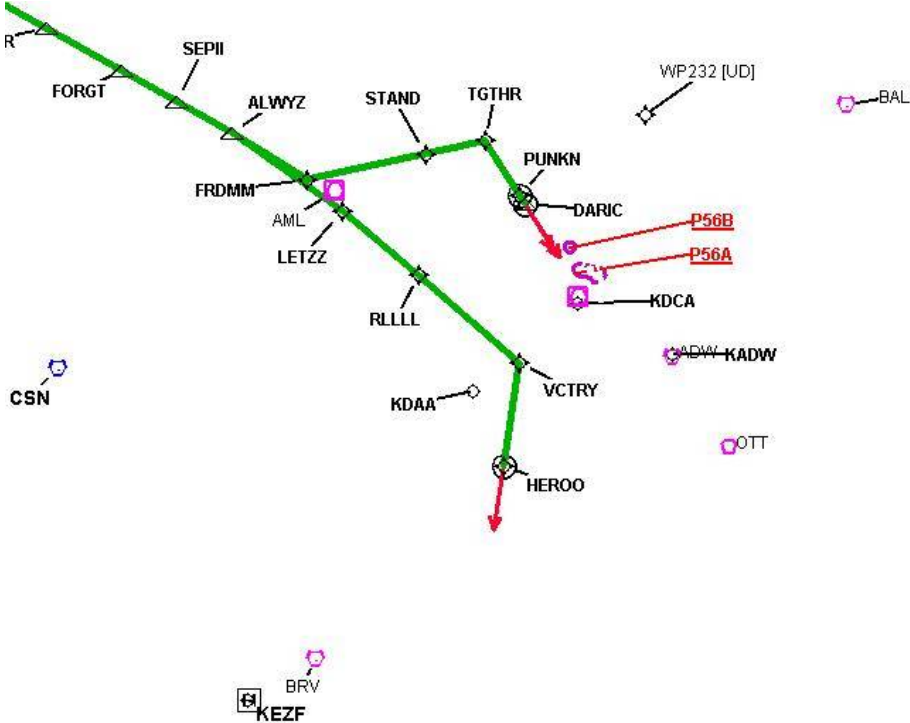
DME DME Assessment Results for FRDMM7 path TGTHR\_PUNKN

Graphic Depiction 3



DME DME Assessment Results for FRDMM7 path TGTHR\_PUNKN

Graphic Depiction 4



## DME DME Assessment Results for FRDMM7 path ALWYZ\_HEROO

Results Summary	
Flyability:	Completed
DME/DME:	Completed - No Critical DMEs
Name:	David C-CTR Cook
Project File:	C:\Users\David C-CTR Cook\Documents\TARGETS WORK\DME-DME WORK\7-9-2026 PUBLICATION\FRDMM - TRUPS FOR JACOB\FRDMM7\DCA ONLY\TRUPS_FRDMM DCA ONLY DME-DME 20251212.tgs
Output File:	C:\Users\David C-CTR Cook\Documents\TARGETS WORK\DME-DME WORK\7-9-2026 PUBLICATION\FRDMM - TRUPS FOR JACOB\FRDMM7\DCA ONLY\KDCA [IFPA] FRDMM7 20260225_1240 EST\ALWYZ_HEROO\KDCA FRDMM7 RNAV STAR ALWYZ HEROO 20260225_1240 EST.pdf
Procedure Name:	FRDMM7
Software: DmeDmePlugin:	7.6.0
Date/Time:	02/25/2026 12:40 EST
Databases:	MITRE 3DEP 3 arcsec

Failures
No Failures

Warnings
No Warnings

Informational
No Informational

Notes For Flight Check
None

Flight Plan							
Name	Type	Lat/Lon	Altitude (ft)	VNAV Mode	Ground Speed (kts)	Turn Type	Leg Type
ALWYZ	WP	N38° 59' 00.6600", W077° 39' 16.5400"	8000	VNAV	250	FLY_BY	TF
LETZZ	WP	N38° 54' 42.3600", W077° 27' 02.4000"	8000	VNAV	250	FLY_BY	TF
RLLLL	WP	N38° 50' 55.1100", W077° 18' 20.2300"	6000	VNAV	250	FLY_BY	TF
VCTRY	WP	N38° 45' 43.6300", W077° 06' 49.2800"	6000	VNAV	200	FLY_BY	TF
HEROO	WP	N38° 37' 37.4200", W077° 06' 22.2700"	1500	VNAV	200	FLY_OVER	TF

Flyability	
Flight Type:	RNAV_STAR
Selected Airport:	KDCA [IFPA]
Climb Gradient:	None assigned
Speeds:	200 Ground Speed to 11000 FT
	240 Ground Speed to 18000 FT
	260 Ground Speed to 24000 FT
	340 Ground Speed above 24000 FT
Descent During a Turn:	Allowed
VNAV Mode:	Flight Plan

## DME DME Assessment Results for FRDMM7 path ALWYZ\_HEROO

DME/DME	
RNP:	RNP 2
Flight Mode:	Manual
Line of Sight (DTED Level 0 Max):	Evaluated
Inertial Drift:	Enabled
Initial Drift:	0.558 NM
INS Drift Rate:	8.0 NM/Hour
Range Mode:	OSV
RNP Edges:	Evaluated
Min DME Range:	3.0 NM
DME Types:	DME, VOR-DME, VORTAC, TACAN
DME Include Angles:	30 to 150
Critical DMEs:	Allowed
DoD Facilities:	Not included
Foreign Facilities:	Not included
High DMEs:	Included
Low DMEs:	Included
Terminal DMEs:	Included
Flight Check DMEs:	Not selected
Higher Altitudes:	Not Evaluated
Near Maximum Altitude:	Not Evaluated
Automatic ESVs:	Not enabled
Disabled DMEs:	None

DME/DME (Continued)										
DMEs Used										
#	Name	Lat/Lon	MAGVAR	Range	Type	Source	Critical	Status	Time	Distance
1	AML	N38° 56' 04.5329", W077° 28' 00.1263"	8.0 W	40	L		NO	Enabled	83.8 %	82.9 %
2	DCA	N38° 51' 34.0300", W077° 02' 11.1700"	9.0 W	40	L		NO	Enabled	98 %	97.9 %
3	ADW	N38° 48' 25.9900", W076° 51' 58.5200"	10.0 W	40	L		NO	Enabled	41.9 %	44.2 %
4	LDN	N38° 51' 15.8344", W078° 12' 20.0559"	6.0 W	40	L		NO	Enabled	34.1 %	36 %
5	BRV	N38° 20' 10.5264", W077° 21' 10.3159"	9.0 W	40	L		NO	Enabled	81.6 %	80.6 %
6	MRB	N39° 23' 08.0600", W077° 50' 54.0820"	7.0 W	40	L		NO	Enabled	39.1 %	41.2 %
7	FDK	N39° 24' 44.0499", W077° 22' 30.4179"	8.0 W	40	L		NO	Enabled	59.2 %	62.4 %
8	BAL	N39° 10' 15.8283", W076° 39' 40.5225"	11.0 W	40	L		NO	Enabled	52 %	50.4 %
9	OTT	N38° 42' 21.1352", W076° 44' 41.0854"	10.0 W	40	L		NO	Enabled	77.3 %	77.5 %
10	ESL	N39° 13' 31.7740", W078° 59' 22.2000"	6.0 W	130	DL		NO	Enabled	29.5 %	31.1 %
11	CSN	N38° 38' 28.3277", W077° 51' 55.7979"	6.0 W	130	H		NO	Enabled	100 %	100 %

**DME DME Assessment Results for FRDMM7 path ALWYZ\_HEROO**

<b>Flight Check DME Selection</b>						
<b>Distance [NM]</b>	<b>Selected DMEs</b>					<b>Alternate</b>
0.0	MRB	LDN	AML	CSN	FDK	ADW
6.4	FDK	ADW	DCA	OTT	ESL	MRB
11.5	BRV	LDN	FDK	DCA	MRB	CSN
13.3	MRB	CSN	FDK	DCA	ADW	BRV
15.2	BRV	DCA	FDK	ADW	OTT	AML
16.3	BRV	DCA	FDK	OTT	AML	CSN
23.0	BRV	OTT	AML	BAL	CSN	DCA
27.9	AML	BAL	BRV	OTT	CSN	
34.7	AML	BAL	BRV	DCA	CSN	
35.3	BRV	AML	DCA	CSN		

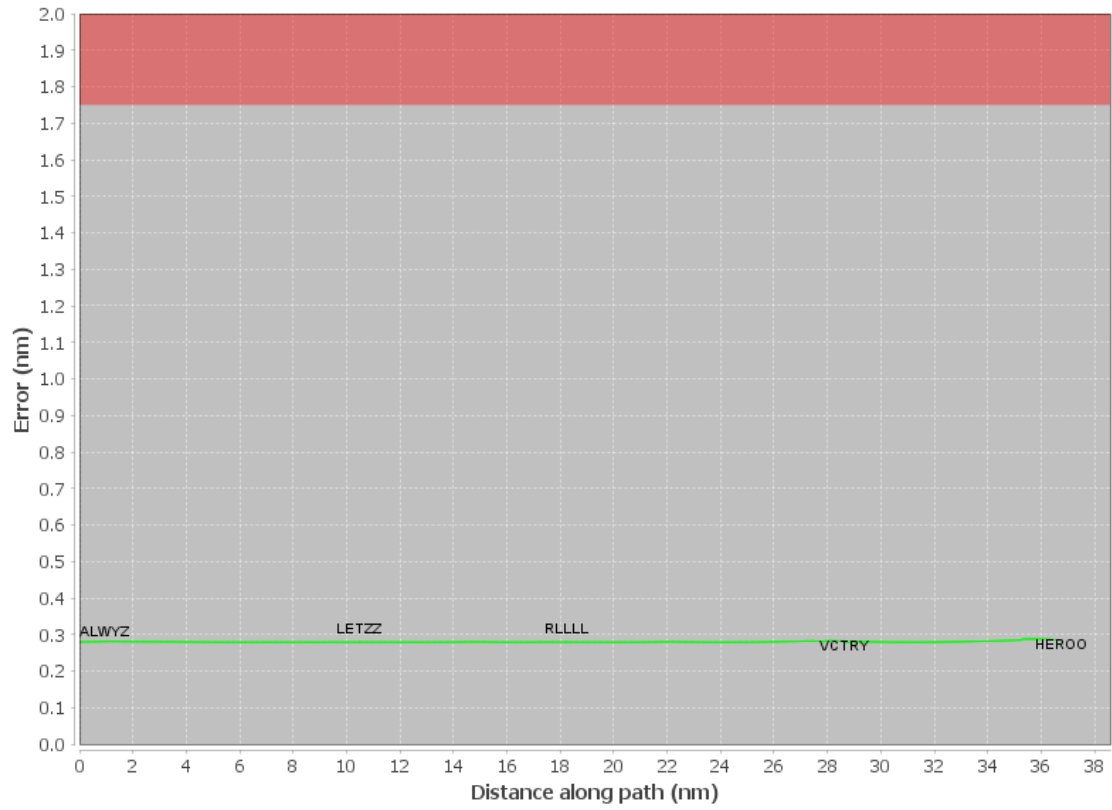
<b>Inertial Drift Segments</b>			
<b>#</b>	<b>Start Location</b>	<b>End Location</b>	<b>Length [NM]</b>

<b>Available DMEs by Waypoints</b>			
<b>Waypoint Before</b>	<b>Waypoint After</b>	<b>DME List</b>	<b>Suggested DMEs</b>
ALWYZ	LETZZ	AML, DCA, ADW, LDN, BRV, MRB, FDK, OTT, ESL, CSN	
LETZZ	RLLLL	AML, DCA, ADW, BRV, LDN, FDK, MRB, BAL, OTT, ESL, CSN	
RLLLL	VCTRY	AML, DCA, BRV, FDK, BAL, OTT, CSN	
VCTRY	HEROO	AML, DCA, BRV, BAL, OTT, CSN	

<b>User Data Files</b>								
<b>#</b>	<b>File Name</b>							
	None							
<b>User DMEs</b>								
<b>#</b>	<b>Name</b>	<b>Lat/Lon</b>	<b>MAGVAR</b>	<b>Range</b>	<b>Elevation [ft]</b>	<b>Frequency</b>	<b>Replaces</b>	<b>Status</b>
	None							

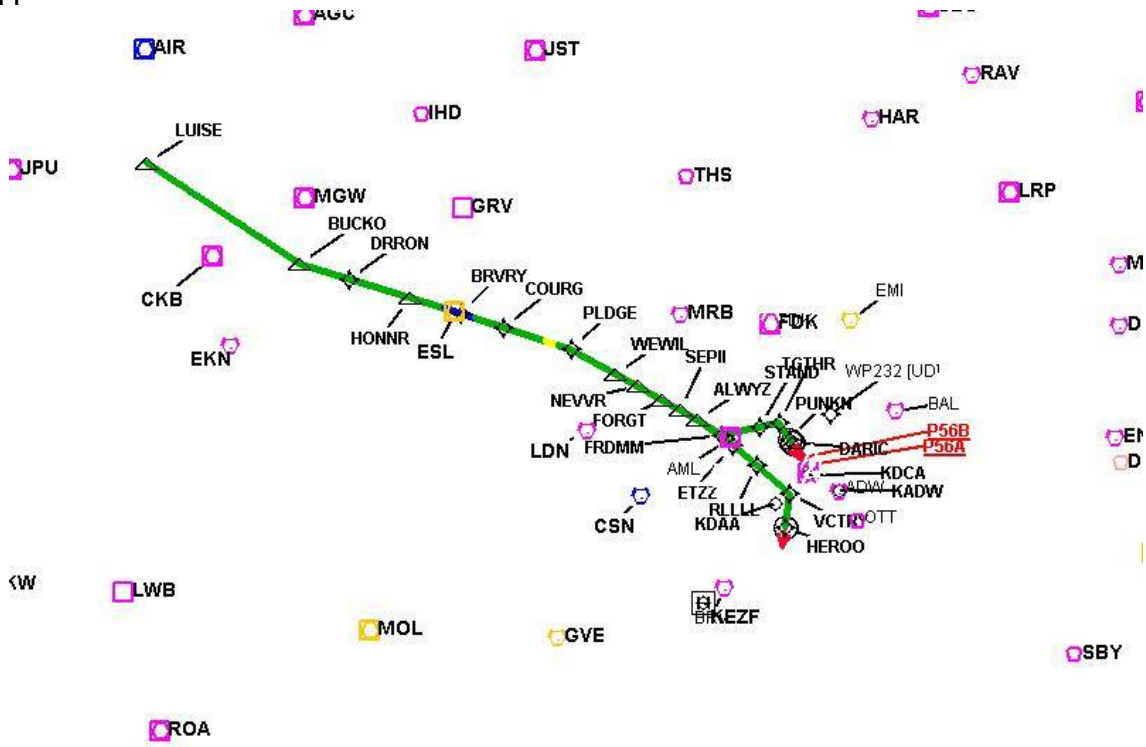
# DME DME Assessment Results for FRDMM7 path ALWYZ\_HEROO

## DME Error



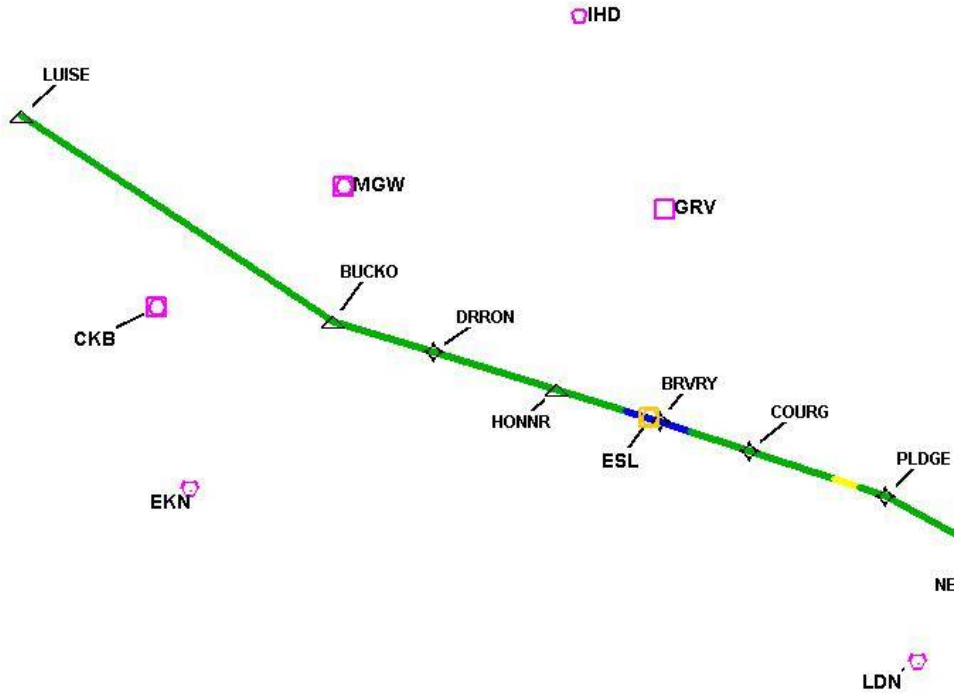
# DME DME Assessment Results for FRDMM7 path ALWYZ\_HEROO

Graphic Depiction 1



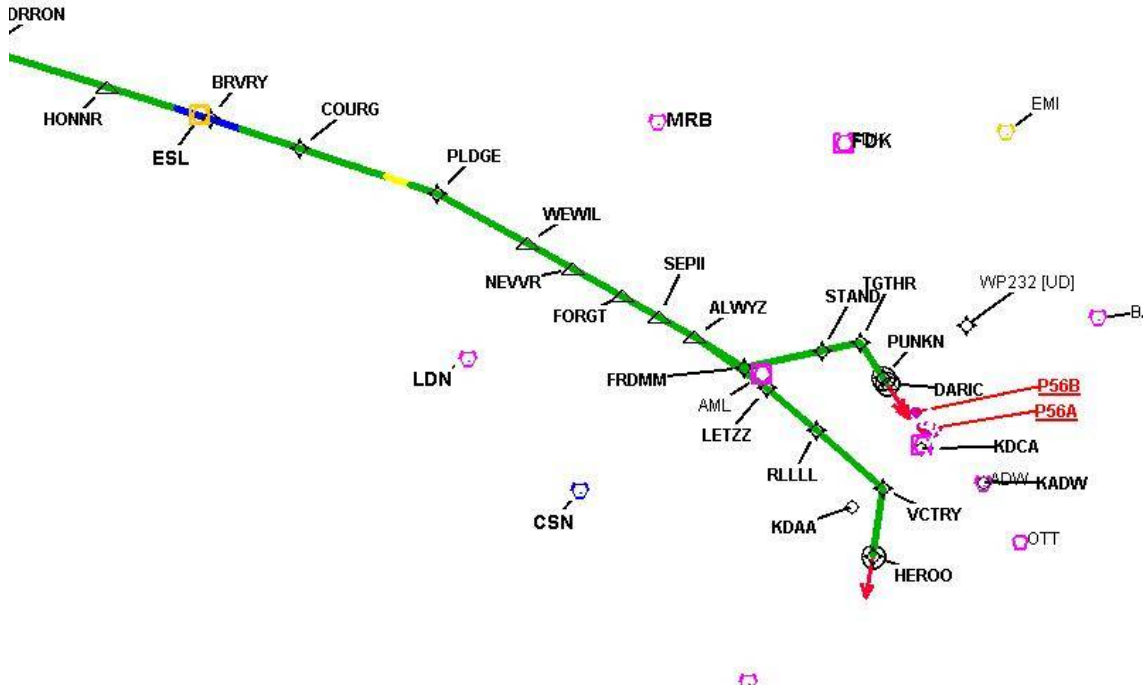
# DME DME Assessment Results for FRDMM7 path ALWYZ\_HEROO

Graphic Depiction 2



# DME DME Assessment Results for FRDMM7 path ALWYZ\_HEROO

Graphic Depiction 3



# DME DME Assessment Results for FRDMM7 path ALWYZ\_HEROO

Graphic Depiction 4

