

Flight Procedures Cover Page	Task Action: FLIGHT CHECK	Task Type: IAP	Estimated Chart Date: 05/14/2026	APWS Task ID: 3C8B28ACC7C44D74846F09FB64522E0D	APWS Project ID: 7223A098CBCD4352B1560849BF30A954
Procedure: ILS OR LOC RWY 35 AMDT 19D		Enroute: NO	Specialist: Heiderstadt, Nicholas		Agreement Number:
Airport ID: KSLN			Airport City: SALINA		State: KS
Facility ID:	Facility Type:	Flight Inspection Remark Type: New FC Slot			

Procedure Comments:  
P-NOTAM, NEW ILS ALTERNATE MINS NOTE.  
NO FC REQUIRED  
CONTACT ROBERT HAMILTON 405-954-4608

QUALITY  
9  
CHECKED  
BEGUE

QUALITY  
10  
CHECKED

LOC I-SLN <b>108.9</b>	APP CRS <b>353°</b>	Rwy Ldg <b>12300</b>
		TDZE <b>1271</b>
		Apt Elev <b>1288</b>

# ILS or LOC RWY 35

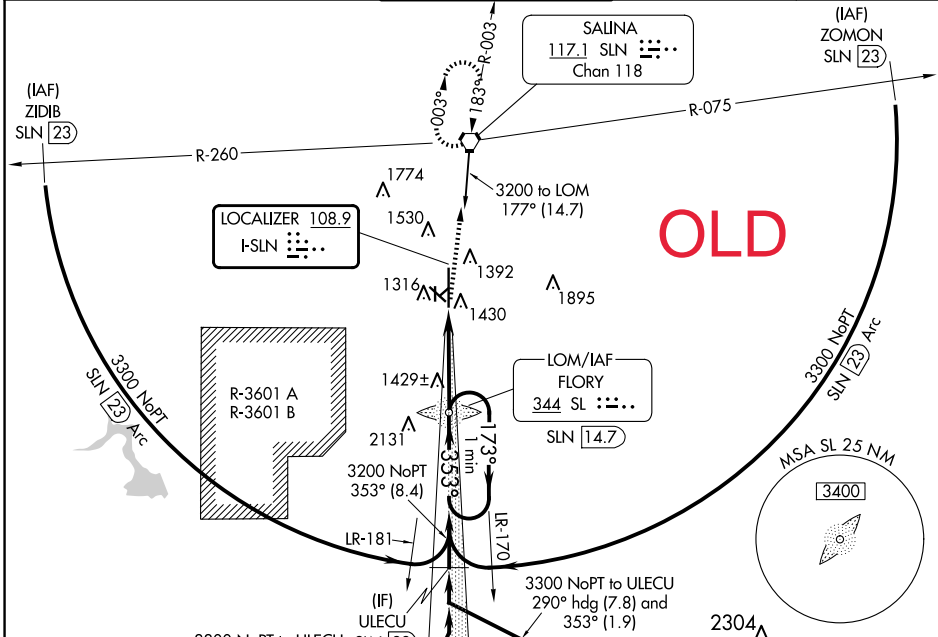
SALINA RGNL (SLN)

**⚠** For inop ALS, increase S-LOC 35 Cat D visibility to 1 1/2 SM and Cat E visibility to 1 1/2 SM. For inop ALS, increase S-ILS 35 Cat E visibility to 3/4 SM. Circling NA for Cats D and E southwest of Rwy 12-30.



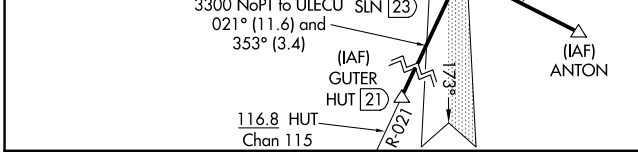
**MISSED APPROACH:** Climb to 1700 then climb to 3000 direct SLN VORTAC and hold.

ATIS <b>120.15</b>	KANSAS CITY CENTER <b>134.9 363.2</b>	SALINA TOWER ★ <b>119.3 (CTAF) 257.7</b>	GND CON <b>121.9 360.8</b>	UNICOM <b>122.95</b>
-----------------------	--	---	-------------------------------	-------------------------



NC-2, 02 OCT 2025 to 30 OCT 2025

NC-2, 02 OCT 2025 to 30 OCT 2025



ELEV 1288	<b>D</b>	TDZE 1271
-----------	----------	-----------

HIRL Rwy 17-35  
MIRL Rwy 12-30

