

Flight Procedures Cover Page	Task Action: FLIGHT CHECK	Task Type: IAP	Estimated Chart Date: 11/27/2025	APWS Task ID: 3D0E7DFFE84E409A93E36EC270447499	APWS Project ID: 7380441C50E94466BC725F8A8B981D43
Procedure: HI-ILS Z OR LOC Z RWY 14 AMDT 4		Enroute: NO	Specialist: Donkor, Kweku		Agreement Number:
Airport ID: KJAX			Airport City: JACKSONVILLE		State: FL
Facility ID: CZH	Facility Type: ILS	Flight Inspection Remark Type: New FC Slot			

Procedure Comments:

CLEARs NOTAM FDC: 4/5125

PENDING DATA USED FOR AIRPORT AND RUNWAYS

SONIA OM DECOMMISSIONED

CONTACT: ROBERT HAMILTON 405-954-4608.

08/21/25: THIS IS AN UPDATED COPY OF THE FORM DEVELOPED ON 07/17/25:

ZIDSO 8260-2:

1. REMOVED I-CZH FROM FIX MAKE-UP FACILITIES.
2. UPDATED KJAX HI-ILS Z OR LOC Z RWY 14 FIX USE FROM I-CZH TO CRG.

8260-3:

1. CHANGED ALL INSTANCES OF "ZIDSO/I-CZH 17.93 DME" TO "ZIDSO/CRG 30.00 DME".
2. CHANGED BIGGS/CRG 42.00 DME TO ZIDSO/CRG 30.00 DME COURSE FROM "136.54 (CRG R-317)" TO "135.86 (CRG R-316)".
3. CHANGED ZIDSO/CRG 30.00 DME TO HAMOC/I-CZH 10.93 DME COURSE FROM "136.54" TO "135.86 (CRG R-316)".
4. HAMOC/I-CZH 10.93 DME TO WOLQU/I-CZH 6.52 DME/RADAR ADDED "(I-CZH)" TO COURSE.

9/19/2025: THIS IS AN UPDATED COPY OF THE FORM DEVELOPED ON 4/29/2025

ADDED 11/27/2025 TO REQUIRED EFFECTIVE DATE.



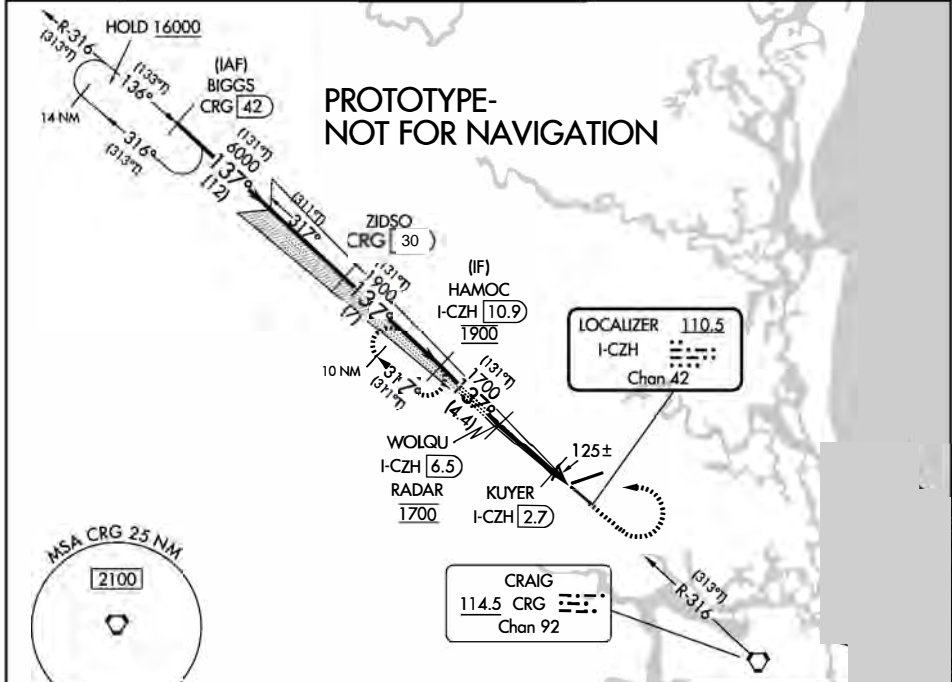
LOC/DME I-CZH 110.5 Chan 42	APP CRS 137°	Rwy Ldg TDZE 7701 Apt Elev 27
---	------------------------	--

HI-ILS Z or LOC Z RWY 14

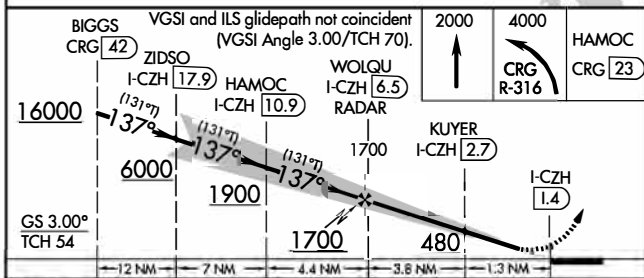
JACKSONVILLE INTL (JAX)

DME required. RADAR required for procedure entry.		MALSRL	MISSED APPROACH: Climb to 2000, then climbing left turn to 4000 on CRG VORTAC R-316 to HAMOC/CRG 23 DME and hold, Continue climb-in-hold to 4000.
<p>▼ Rwy 14 helicopter visibility reduction below 3/4 SM NA. Autopilot coupled approach NA below 750. * For inop ALS, increase S-ILS 14 Cat C/D/E visibility to 3/8 SM. ** For inop ALS, increase S-LOC 14 Cat C/D/E visibility to 1 SM.</p>			

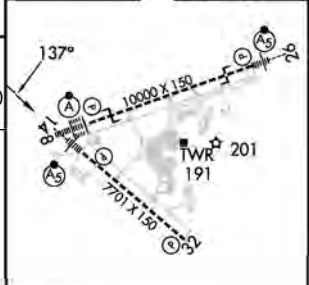
D-ATIS 125.85	JACKSONVILLE APP CON 119.0 269.9	JACKSONVILLE TOWER 118.3 317.7	GND CON 121.9 348.6	CLNC DEL 119.5 290.275
-------------------------	--	--	-------------------------------	----------------------------------



ESA W/IN 100 NM 2800



ELEV 30	TDZE 27
---------	---------



CATEGORY	A	B	C	D	E
S-ILS 14*	NA	NA	306-3/4	279 (300-3/4)	
S-LOC 14**	NA	NA	380-3/4	353 (400-3/4)	
CIRCLING	NA	NA	600-1 1/2 570 (600-1 1/2)	600-2 570 (600-2)	760-2 1/2 730 (800-2 1/2)

REIL Rwy 32 TDZ/CL Rwy 8, 14, and 26 HIRL Rwy 8-26 and 14-32					
FAF to MAP 5.1 NM					
Knots	60	90	120	150	180
Min:Sec	5:06	3:24	2:33	2:02	1:42

OLD

HI-ILS Z or LOC Z RWY 14

LOC I-CZH 110.5	APCH CRS 137°	Rwy Idg 7701 TDZE 27 Arprt Elev 30
---------------------------	-------------------------	---

[USAF]

JACKSONVILLE INTL (KJAX)

DME required. RADAR required for procedure entry.



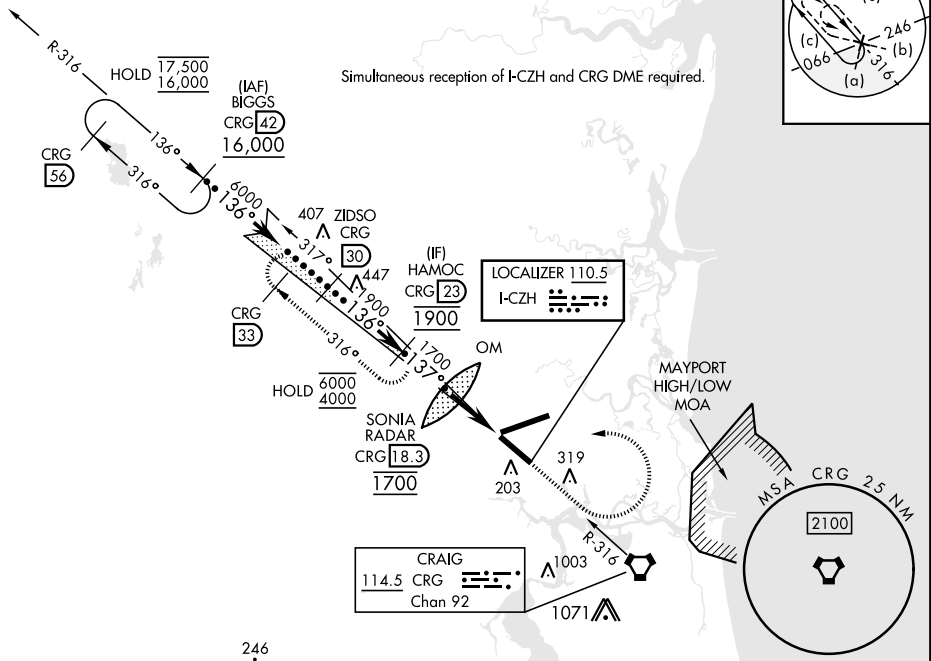
MISSED APPROACH: Climb to 2000 then climbing left turn to 4000 on CRG R-316 to HAMOC 23 DME and hold.

★ When ALS inop, increase vis to ¾ mile.
★★ When ALS inop, increase vis to 1 mile.

ATIS 125.85	APP CON 119.0 269.9	TOWER 118.3 317.7	GND CON 121.9 348.6	CLNC DEL 119.5 290.275
-----------------------	-------------------------------	-----------------------------	-------------------------------	----------------------------------

Rwy 14 helicopter visibility reduction below ¾ mile NA. Autopilot coupled approach NA below 750.

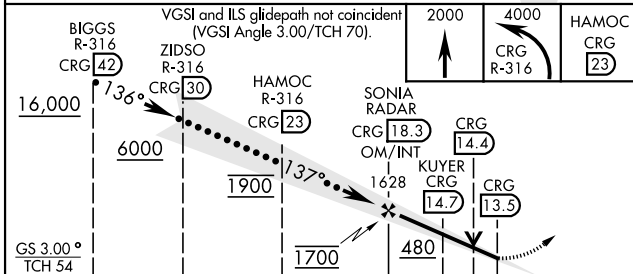
Simultaneous reception of I-CZH and CRG DME required.



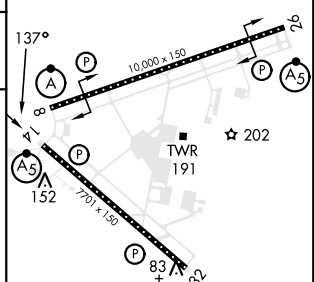
SE-3, 17 APR 2025 to 15 MAY 2025

SE-3, 17 APR 2025 to 15 MAY 2025

EMERG SAFE ALT 100 NM 2800 FROM CRG VORTAC



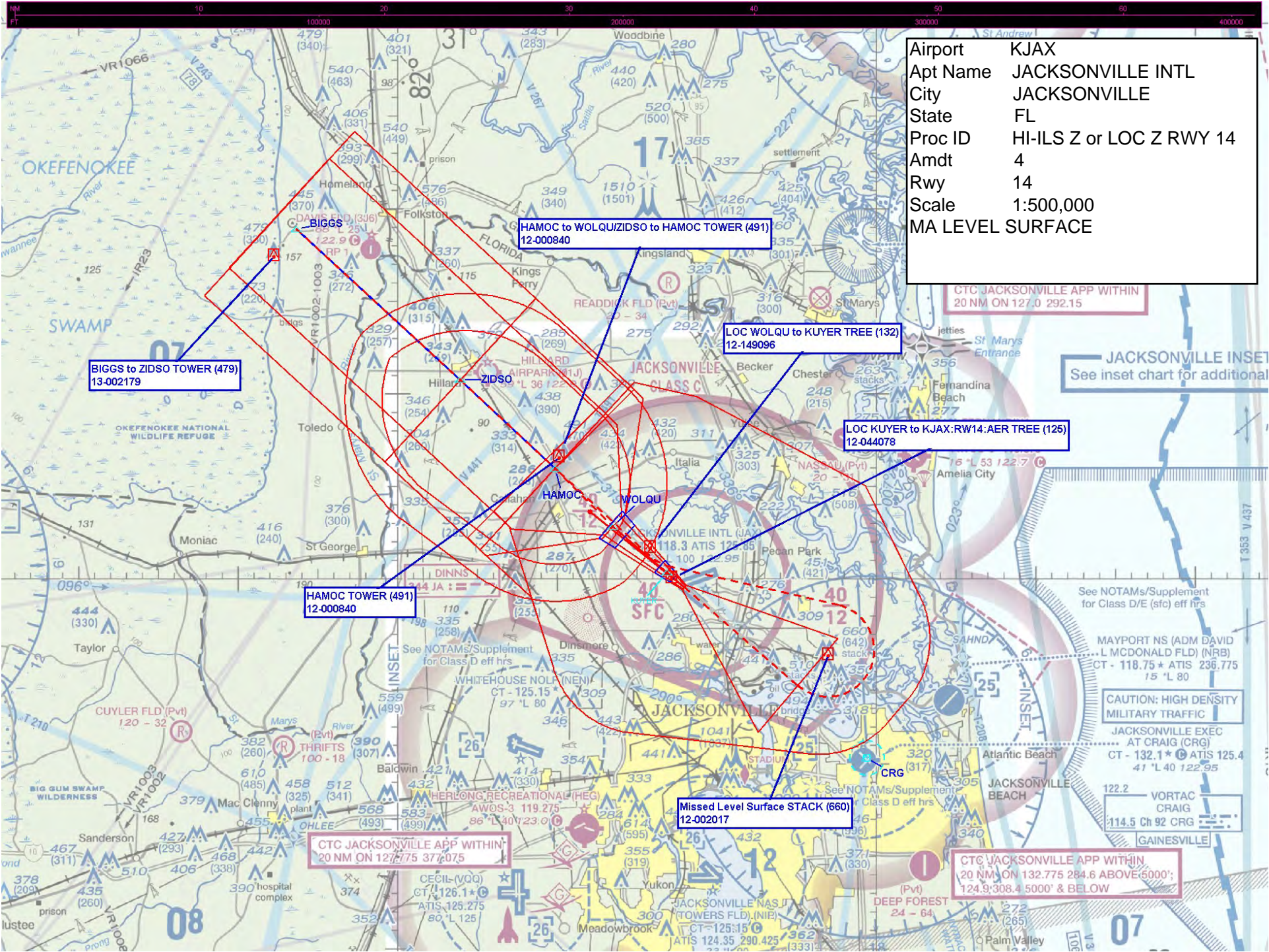
ELEV 30	TDZE 27
---------	---------



CATEGORY	C	D	E
S-ILS 14 *	227-½	200 (200-½)	
S-LOC 14 **	380-¾	353 (400-¾)	
CIRCLING	580-1½ 550 (600-1½)	640-2 610 (700-2)	760-2½ 730 (800-2½)

HIRL Rwy 8-26, 14-32 REL Rwy 32 TDZL/CL Rwy 8, 14, 26
FAF to MAP 4.8 NM
Knots 120 140 160 180 200
Min:Sec 2:24 2:03 1:48 1:36 1:26

HI-ILS Z or LOC Z RWY 14



Airport	KJAX
Apt Name	JACKSONVILLE INTL
City	JACKSONVILLE
State	FL
Proc ID	HI-ILS Z or LOC Z RWY 14
Amdt	4
Rwy	14
Scale	1:500,000
MA LEVEL SURFACE	

CTC JACKSONVILLE APP WITHIN
20 NM ON 127.0 292.15

JACKSONVILLE INSET
See inset chart for additional

BIGGS to ZIDSO TOWER (479)
13-002179

HAMOC to WOLQU/ZIDSO to HAMOC TOWER (491)
12-000840

LOC WOLQU to KUYER TREE (132)
12-149096

LOC KUYER to KJAX:RW14:AER TREE (125)
12-044078

HAMOC TOWER (491)
12-000840

Missed Level Surface STACK (660)
12-002017

CTC JACKSONVILLE APP WITHIN
20 NM ON 127.775 377.075

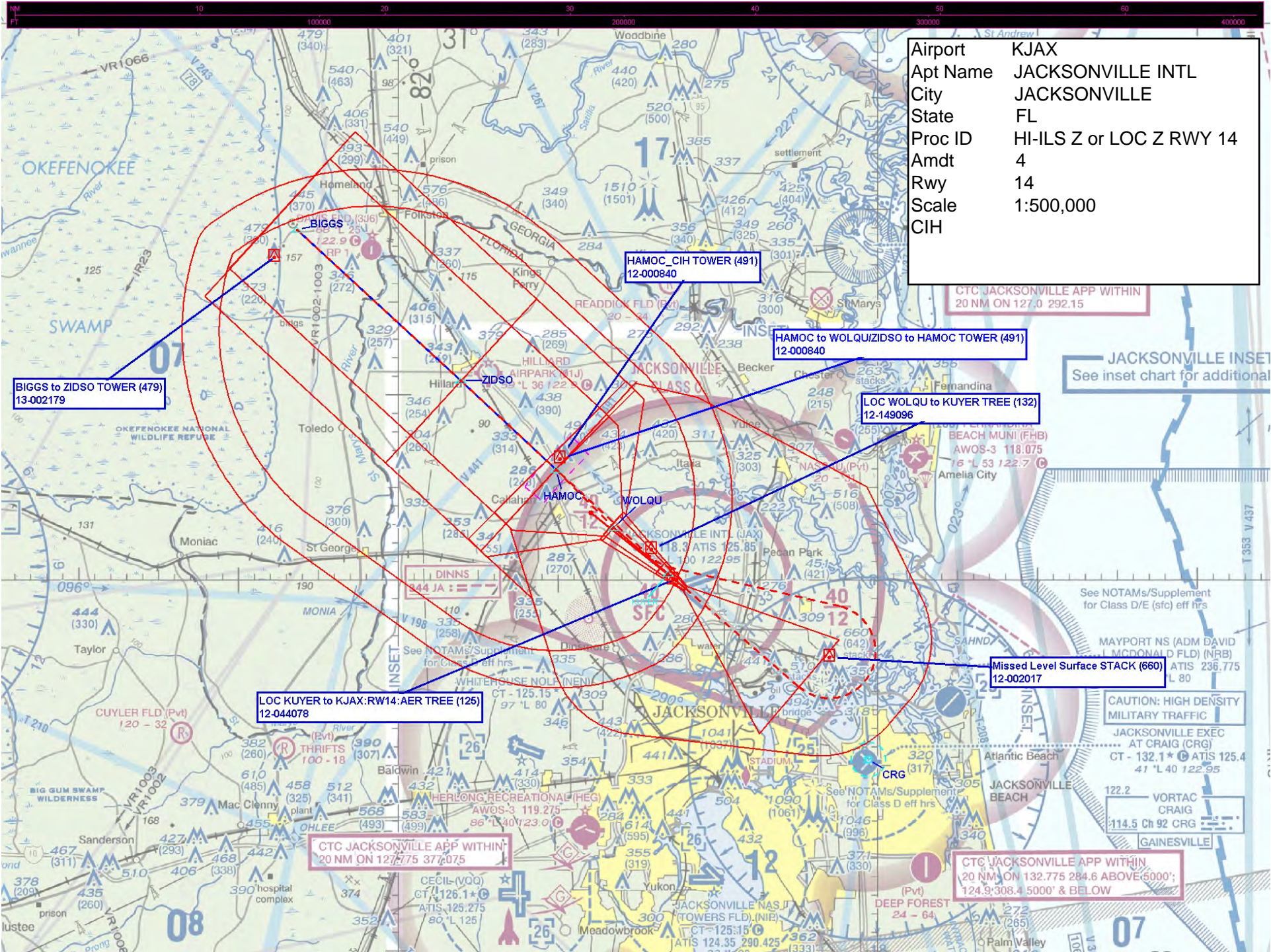
CTC JACKSONVILLE APP WITHIN
20 NM ON 132.775 284.6 ABOVE 5000'
124.9/308.4 5000' & BELOW

CAUTION: HIGH DENSITY
MILITARY TRAFFIC

JACKSONVILLE EXEC
AT CRAIG (CRG)
CT - 132.1 * ATIS 125.4
41 °L 40 122.95

122.2 VORTAC
CRAIG

GAINESVILLE



Airport	KJAX
Apt Name	JACKSONVILLE INTL
City	JACKSONVILLE
State	FL
Proc ID	HI-ILS Z or LOC Z RWY 14
Amdt	4
Rwy	14
Scale	1:500,000
CIH	

CTC JACKSONVILLE APP WITHIN 20 NM ON 127.0 292.15

BIGGS to ZIDSO TOWER (479) 13-002179

HAMOC_CIH TOWER (491) 12-000840

HAMOC to WOLQU/ZIDSO to HAMOC TOWER (491) 12-000840

LOC WOLQU to KUYER TREE (132) 12-149096

LOC KUYER to KJAX: RW14: AER TREE (126) 12-044078

Missed Level Surface STACK (660) 12-002017

CTC JACKSONVILLE APP WITHIN 20 NM ON 127.775 377.075

CTC JACKSONVILLE APP WITHIN 20 NM ON 132.775 284.6 ABOVE 6000'; 124.9/308.4 5000' & BELOW

JACKSONVILLE INSET
See inset chart for additional

CAUTION: HIGH DENSITY MILITARY TRAFFIC
JACKSONVILLE EXEC AT CRAIG (CRG)
CT - 132.1 * ATIS 125.4
41 °L 40 122.95

122.2 VORTAC CRAIG
114.5 Ch 92 CRG
GAINESVILLE

See NOTAMS/Supplement for Class D/E (stc) eff hrs

MAYPORT NS (ADM DAVID MCDONALD FLD) (NRB)
ATIS 236.775
L 80

See NOTAMS/Supplement for Class D eff hrs

See NOTAMS/Supplement for Class E eff hrs

CECIL (VQ)
CT 126.1 * ATIS 125.275
80 °L 125

See NOTAMS/Supplement for Class D eff hrs

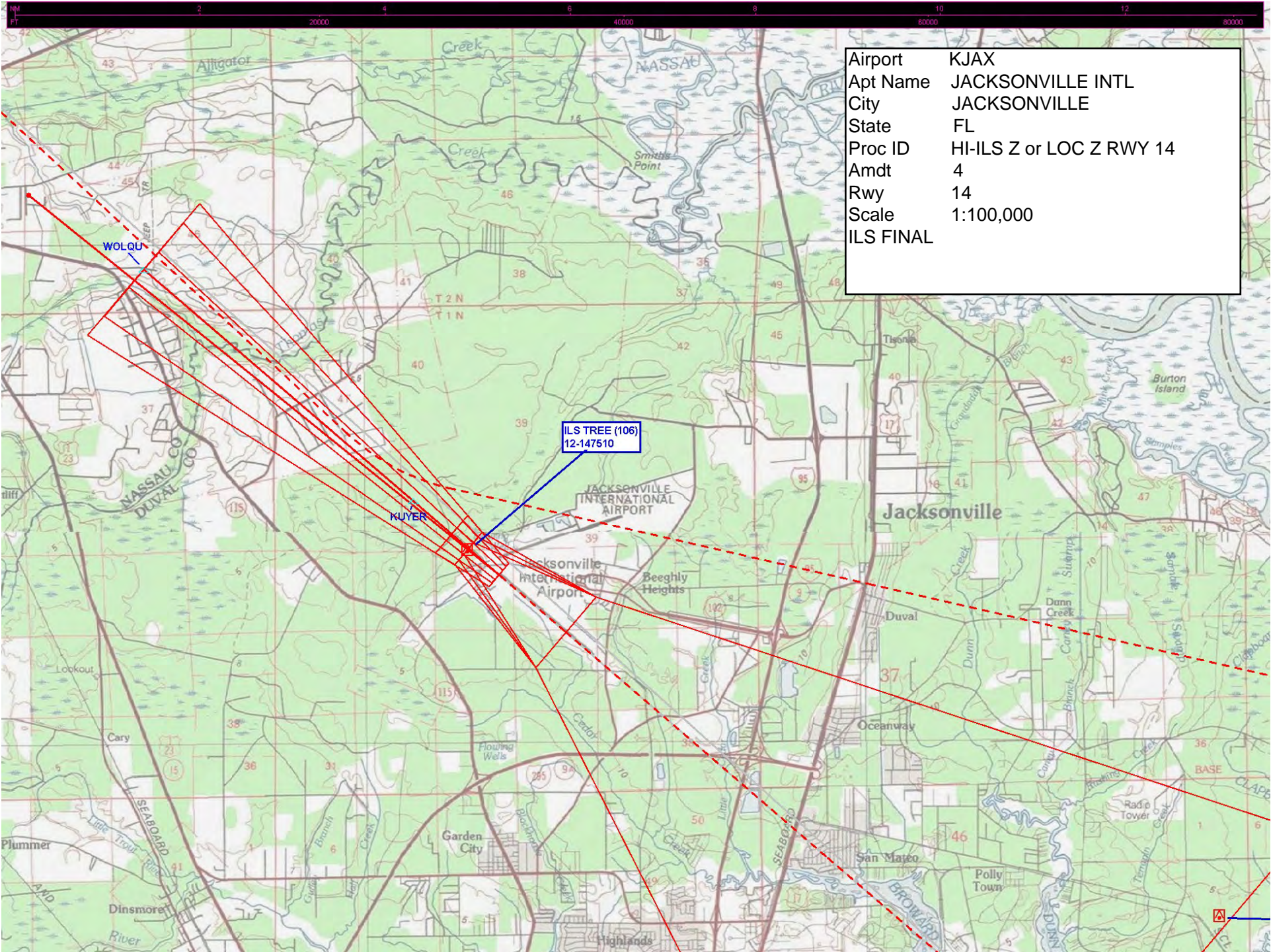
JACKSONVILLE NAS II (TOWERS FLD) (NIE)
CT - 125.15 * ATIS 124.35 290.425

122.2 VORTAC CRAIG
114.5 Ch 92 CRG
GAINESVILLE

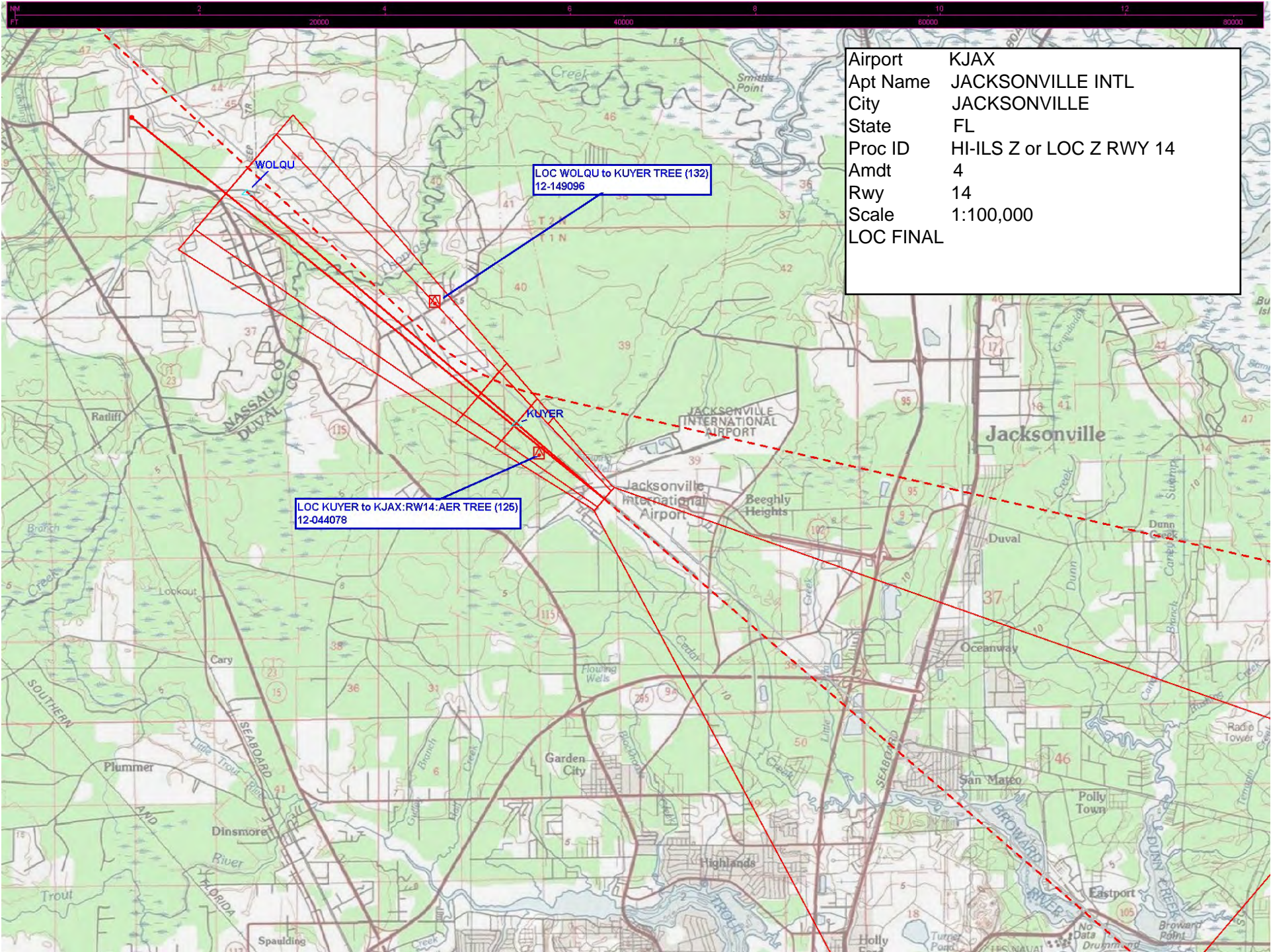
See NOTAMS/Supplement for Class D eff hrs

See NOTAMS/Supplement for Class D eff hrs

See NOTAMS/Supplement for Class D eff hrs



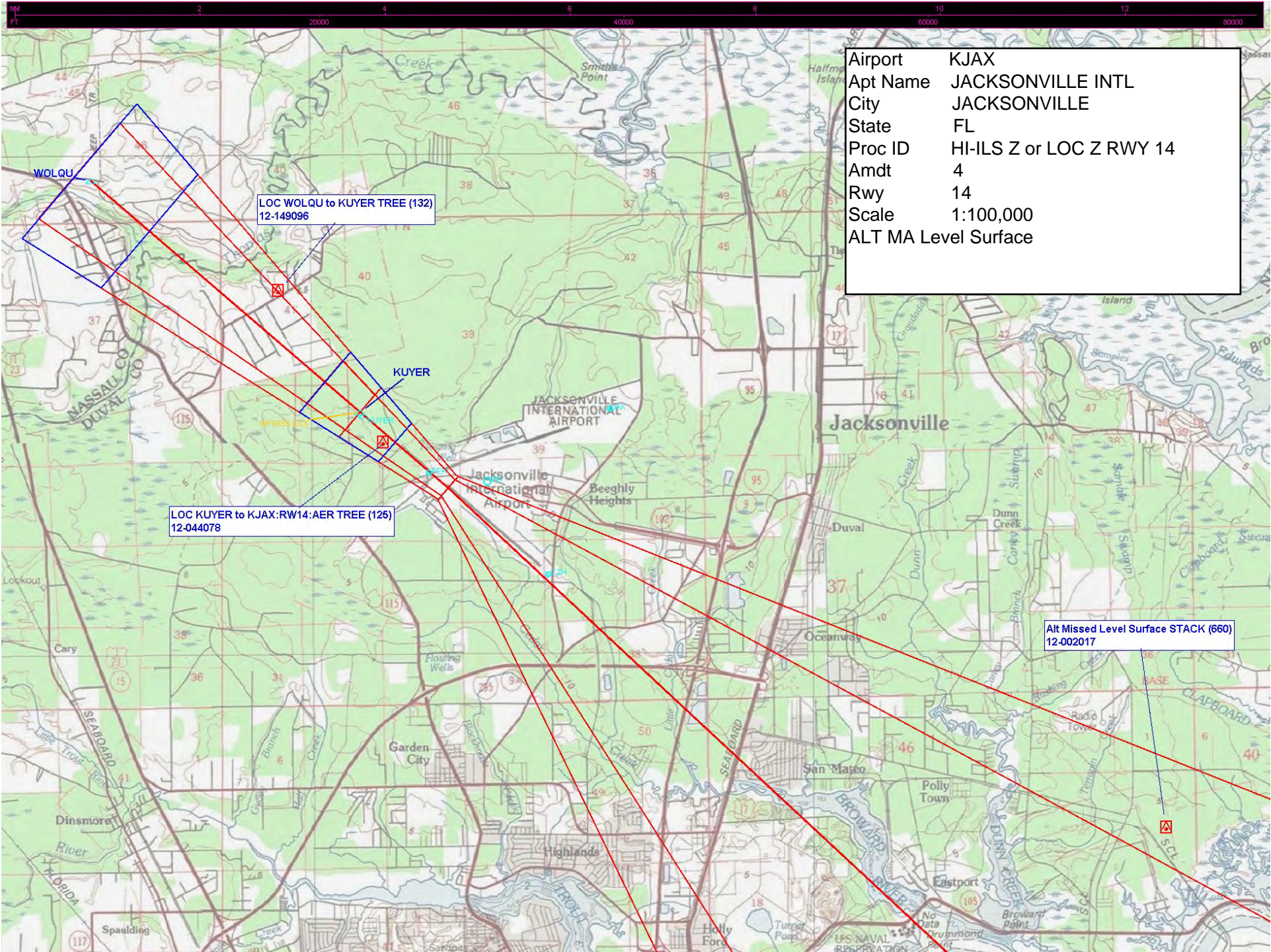
Airport	KJAX
Apt Name	JACKSONVILLE INTL
City	JACKSONVILLE
State	FL
Proc ID	HI-ILS Z or LOC Z RWY 14
Amdt	4
Rwy	14
Scale	1:100,000
ILS FINAL	



Airport	KJAX
Apt Name	JACKSONVILLE INTL
City	JACKSONVILLE
State	FL
Proc ID	HI-ILS Z or LOC Z RWY 14
Amdt	4
Rwy	14
Scale	1:100,000
LOC FINAL	

LOC WOLQU to KUYER TREE (132)
12-149096

LOC KUYER to KJAX:RW14:AER TREE (125)
12-044078



Airport	KJAX
Apt Name	JACKSONVILLE INTL
City	JACKSONVILLE
State	FL
Proc ID	HI-ILS Z or LOC Z RWY 14
Amdt	4
Rwy	14
Scale	1:100,000
ALT MA	Level Surface

LOC WOLQU to KUYER TREE (132)
12-149096

LOC KUYER to KJAX:RW14:AER TREE (125)
12-044078

Alt Missed Level Surface STACK (660)
12-002017

WOLQU

KUYER

Jacksonville

JACKSONVILLE INTERNATIONAL AIRPORT

Jacksonville International Airport

Beeghly Heights

Duval

Oceanway

Garden City

San Mateo

Polly Town

Highlands

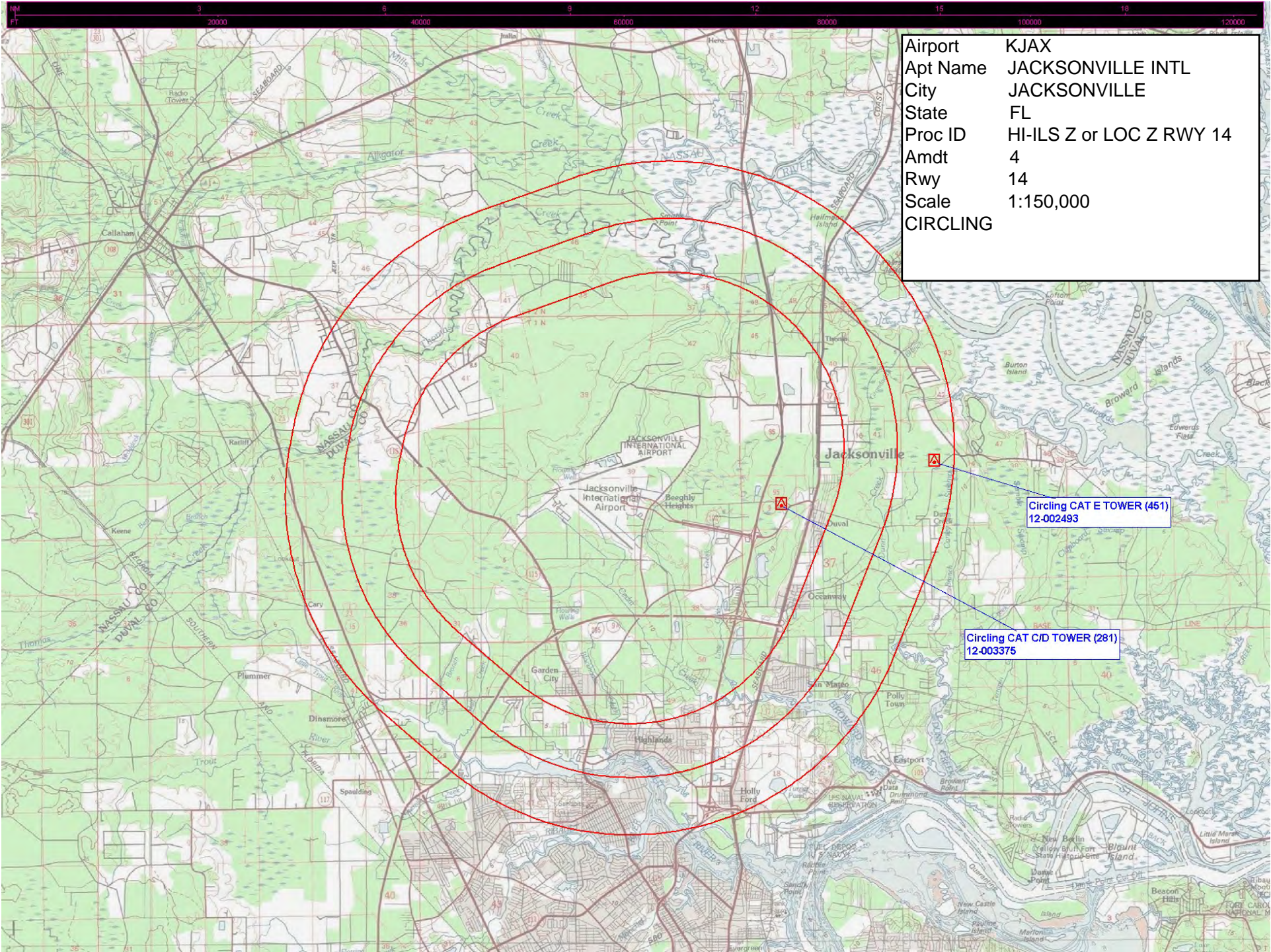
Eastport

Spaulding

Holly Ford

US NAVAL RESERVATION

SCL



Airport	KJAX
Apt Name	JACKSONVILLE INTL
City	JACKSONVILLE
State	FL
Proc ID	HI-ILS Z or LOC Z RWY 14
Amdt	4
Rwy	14
Scale	1:150,000
CIRCLING	

Circling CAT E TOWER (451)
12-002493

Circling CAT CID TOWER (281)
12-003375