

Flight Procedures Cover Page	Task Action: Cancellation	Task Type: IAP	Estimated Chart Date: 07/09/2026	APWS Task ID: 3DFC284DCCF04E65BFEF9339D49A218A	APWS Project ID: E497D33DF7BC4298A5A14295E81B5DC1
Procedure: VOR RWY 27L ORIG		Enroute: NO	Specialist: Ferreira, Giorgia		Agreement Number:
Airport ID: KMLB			Airport City: MELBOURNE		State: FL
Facility ID: MLB	Facility Type: VOR_DME	Flight Inspection Remark Type:			

Procedure Comments:
POC: ROBERT HAMILTON AJV-A433 405-954-4608.



MELBOURNE, FLORIDA

AL-252 (FAA)

25275

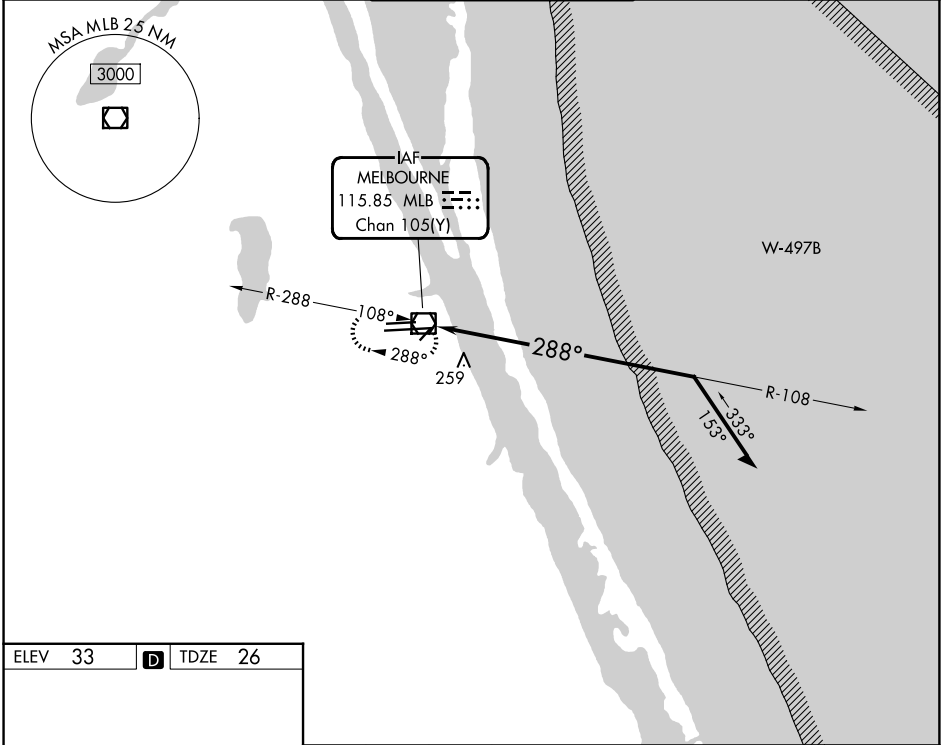
VOR/DME	MLB	APP CRS	Rwy Ldg	9482
115.85		288°	TDZE	26
Chan 105 (Y)			Apt Elev	33

CANCEL

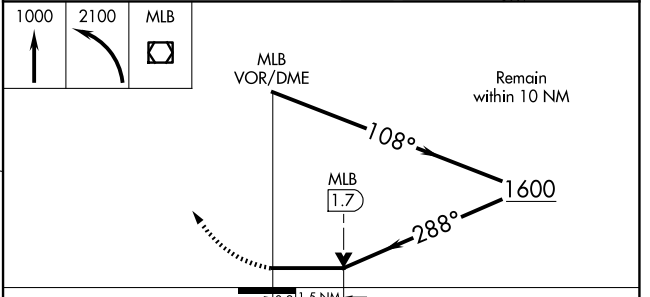
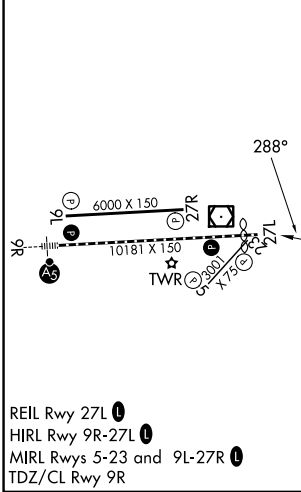
VOR RWY 27L
MELBOURNE ORLANDO INTL (MLB)

MISSSED APPROACH: Climb to 1000 then climbing left turn to 2100 direct MLB VOR/DME and hold.

ATIS 132.55	ORLANDO APP CON 126.025 281.425	MELBOURNE TOWER ★ 118.2(CTAF) 257.8	GND CON 121.9	UNICOM 122.95
-----------------------	---	---	-------------------------	-------------------------



ELEV 33	D	TDZE 26
---------	----------	---------



CATEGORY	A	B	C	D
S-27L	560-1	534 (600-1)	560-1½	534 (600-1½)
CIRCLING	560-1	527 (600-1)	680-1¾ 647 (700-1¾)	880-2¾ 847 (900-2¾)

MELBOURNE, FLORIDA
Orig 08NOV18

28°06'N-80°39'W

MELBOURNE ORLANDO INTL (MLB)
VOR RWY 27L

SE-3, 22 JAN 2026 to 19 FEB 2026

SE-3, 22 JAN 2026 to 19 FEB 2026