

Flight Procedures Cover Page	Task Action: FLIGHT CHECK	Task Type: IAP	Estimated Chart Date: 03/19/2026	APWS Task ID: 3E0FF7EB4601419E9ED2E0374EBC76F3	APWS Project ID: ADB5B885B35444BD98C66E27013D2BA6
Procedure: RNAV (GPS) Y RWY 34R AMDT 3		Enroute: NO	Specialist: Dugan, Joshua		Agreement Number:
Airport ID: KDEN			Airport City: DENVER	State: CO	
Facility ID:	Facility Type:	Flight Inspection Remark Type: New FC Slot			
<p>Procedure Comments: ACTIVE DATA USED FOR KDEN</p> <p>PENDING DATA USED FOR OUF</p> <p>NEW MISSED APPROACH</p> <p>CONTACT ROBERT HAMILTON AJV-A433 405-954-4608</p> <p>10/08/25: THIS IS AN UPDATED COPY OF THE FORM DEVELOPED ON 07/16/25.</p> <p>1. CHANGED MISSED APPROACH INSTRUCTIONS FROM CLIMB TO 10000 DIRECT PIPSY AND ON TRACK 307.84 TO OBONE AND ON TRACK 004.05 TO LPORT AND HOLD TO CLIMB TO 10000 DIRECT PIPSY AND ON TRACK 315.01 TO NIWOT AND HOLD.</p> <p>2. TERMINAL ROUTES REMOVED ALTITUDE FROM CA LEG.</p> <p>3. NOTES ADDED CHART SPEED ICON IN PLANVIEW AT BOOBU: MAX 210 KIAS.</p> <p>8260-1</p> <p>1. REMOVED WAIVER</p> <p>8260-2</p> <p>1. REMOVED OBONE 8260-2.</p>					

QUALITY  
34  
CHECKED

QUALITY  
38  
CHECKED

QUALITY  
38  
CHECKED

QUALITY  
39  
CHECKED






WAAS CH <b>90318</b> <b>W34B</b>	APP CRS <b>353°</b>	Rwy Idg <b>12000</b> TDZE <b>5354</b> Apt Elev <b>5434</b>
----------------------------------------	------------------------	------------------------------------------------------------------

**OLD**

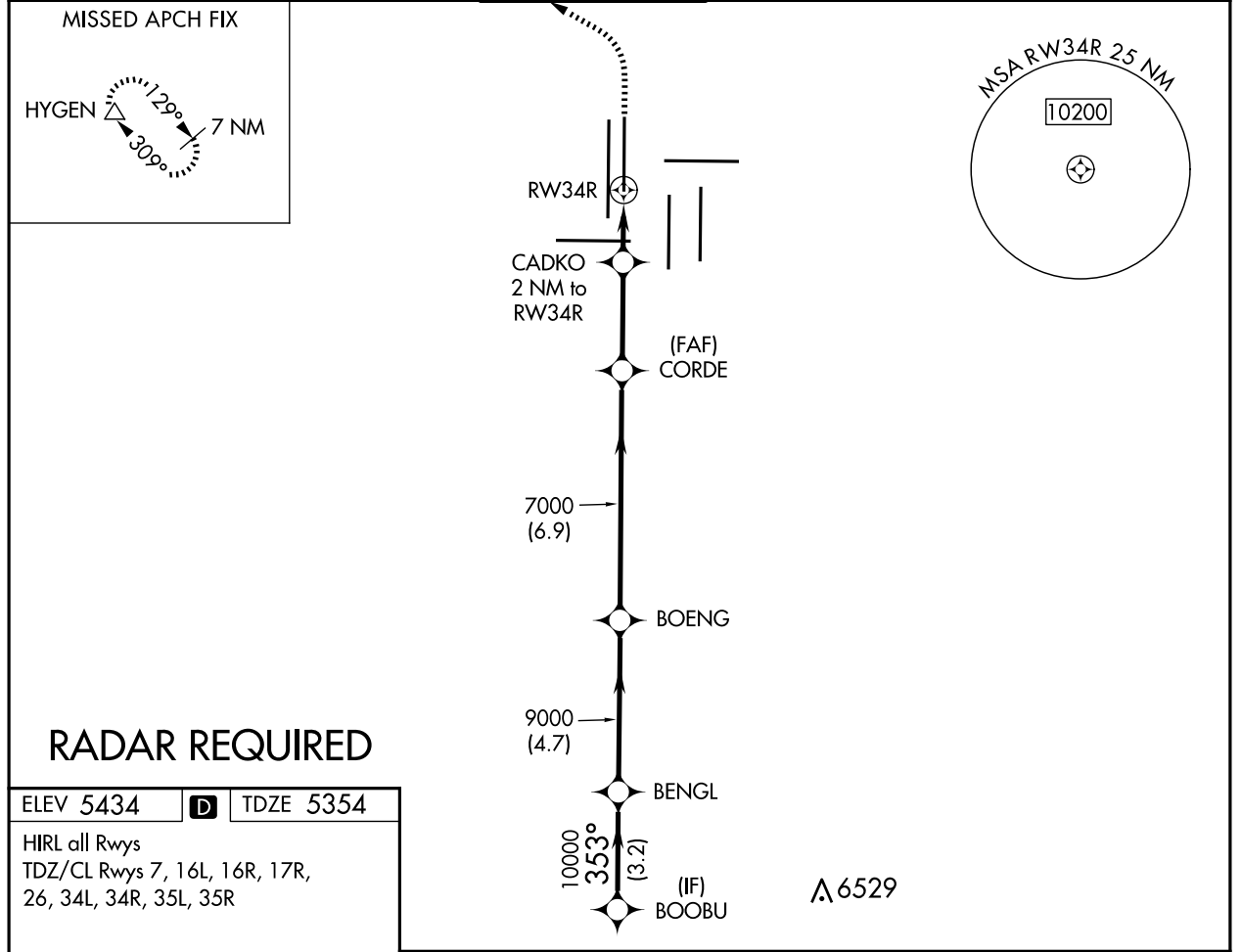
# RNAV (GPS) Y RWY 34R

DENVER INTL (DEN)

**▼** For uncompensated Baro-VNAV systems, LNAV/VNAV NA below -25°C (-13°F) or above 46°C (114°F). DME/DME RNP-0.3 NA. LNAV procedure NA during simultaneous operations. Simultaneous approach authorized with Rwy 35L/R. Use of FD or AP providing RNAV track guidance required during simultaneous operations.

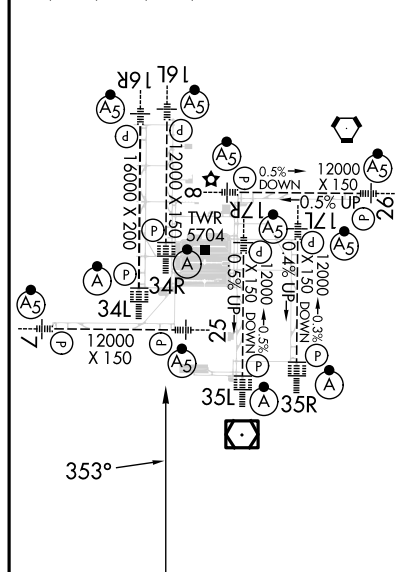
ALSF-2  
  
 MISSED APPROACH: Climb to 6000 then climbing left turn to 10000 direct HYGEN and hold.

D-ATIS <b>125.6 379.9 (ARR)</b> <b>134.025 (DEP)</b>	DENVER APP CON <b>119.3 307.3 (N)</b> <b>120.35 379.3 (S)</b>	DENVER TOWER <b>135.3 351.95</b>	GND CON <b>121.35 379.175 (W)</b> <b>121.85 377.1 (E)</b>	CLNC DEL <b>118.75</b>	CPDLC
------------------------------------------------------------	---------------------------------------------------------------------	-------------------------------------	-----------------------------------------------------------------	---------------------------	-------



ELEV 5434	<b>D</b>	TDZE 5354
-----------	----------	-----------

HIRL all Rwys  
 TDZ/CL Rwys 7, 16L, 16R, 17R,  
 26, 34L, 34R, 35L, 35R



VGSi and RNAV glidepath not coincident (VGSi Angle 3.00/TCH 63).		6000	10000	HYGEN
BOOBU	BENGL	BOENG	CORDE	CADKO 2 NM to RW34R
10000	353° 10000	9000	7000	*LNNAV only RW34R
GP 3.00° TCH 59			*6040	
	3.2 NM	4.7 NM	6.9 NM	3 NM
CATEGORY	A	B	C	D
LPV DA	5554/18 200 (200-½)			
LNAV/VNAV DA	5838/60 484 (500-1¼)			
LNAV MDA	5940/24 586 (600-½)	5940-1¼ 586 (600-1¼)		

SW-1, 12 JUN 2025 to 10 JUL 2025

SW-1, 12 JUN 2025 to 10 JUL 2025