

Flight Procedures Cover Page	Task Action: Abbreviated Amendment	Task Type: IAP	Estimated Chart Date: 12/26/2024	APWS Task ID: 3E9DC313FD8C4688B19C5EEE928D417E	APWS Project ID: 529F816CAFBC4E1194E765A95729C679
Procedure: RNAV (GPS) RWY 4 AMDT 0B		Enroute: NO	Specialist: Marsh, Andre		Agreement Number:
Airport ID: KCJR			Airport City: CULPEPER		State: VA
Facility ID:	Facility Type:	Flight Inspection Remark Type:			

Procedure Comments:

PROCESSED IAW TECHNICAL SUPPORT GROUP (AJF-17) MEMO DATED 07/07/2021 GUIDANCE FOR PROCEDURAL CHANGES REQUIRING FLIGHT INSPECTION/VALIDATION.
DAVID DANNER, AJV-A420: 405-954-5077



RNAV (GPS) RWY 4

CULPEPER RGNL (CJR)

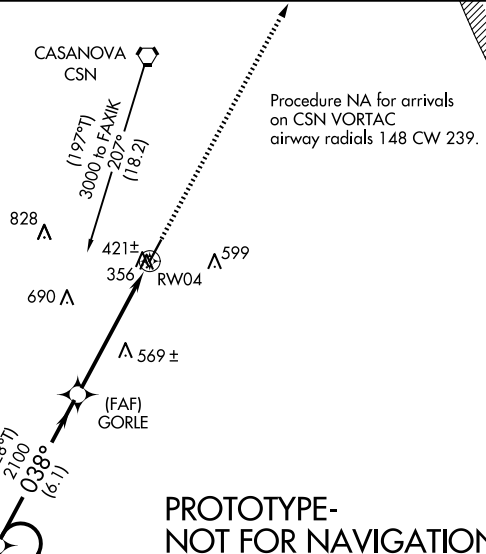
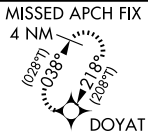
WAAS CH 77606 W04A	APP CRS 038°	Rwy Idg TDZE Apt Elev	5000 316 316
--	------------------------	-----------------------------	---

RNP APCH - GPS.

⚠ Rwy 4 helicopter visibility reduction below 1 SM NA. Baro-VNAV NA when using IAD altimeter setting. For uncompensated Baro-VNAV systems, LNAV/VNAV NA below -15°C or above 48°C. When local altimeter setting not received, use IAD altimeter setting and increase LPV DA to 683 feet; increase LNAV/VNAV DA to 906 feet; increase all MDAs 80 feet and visibility Cats C/D ¼ SM. Straight-in Rwy 4 at night, operational VGSI required, remain on or above VGSI glidepath until threshold.

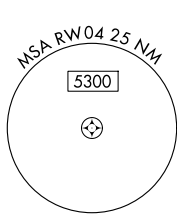
MISSED APPROACH: Climb to 3000 direct DOYAT and hold.

AWOS-3 119.325	POTOMAC APP CON 128.525 306.925	CLNC DEL 121.6	UNICOM 123.075 (CTAF) ①
--------------------------	---	--------------------------	-----------------------------------

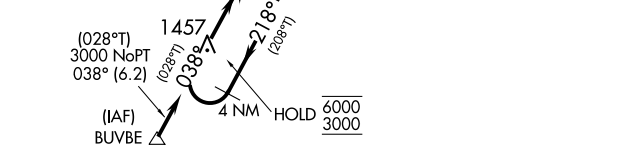


WARNING -- WASHINGTON DC SFRA. CONTACT POTOMAC APP CON

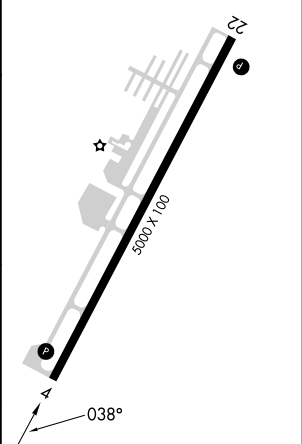
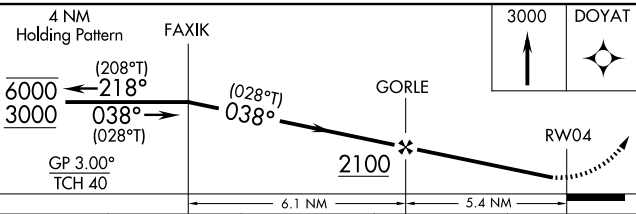
WASHINGTON DC METROPOLITAN SFRA



PROTOTYPE- NOT FOR NAVIGATION



ELEV 316	TDZE 316
REIL Rwy 4 and 22 ①	MIRL Rwy 4-22 ①



CATEGORY	A	B	C	D
LPV DA		610-1 294 (300-1)		
LNAV/VNAV DA		833-1¾ 517 (600-1¾)		
LNAV MDA	820-1 504 (600-1)		820-1½ 504 (600-1½)	

WAAS CH 77606 W04A	APP CRS 038°	Rwy Idg TDZE 316 Apt Elev 316
--	------------------------	---

RNAV (GPS) RWY 4

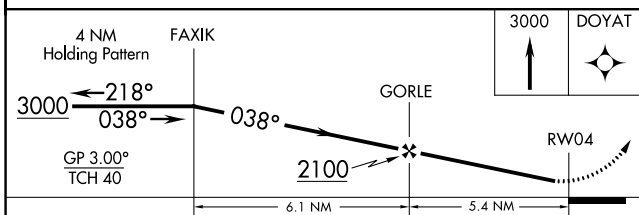
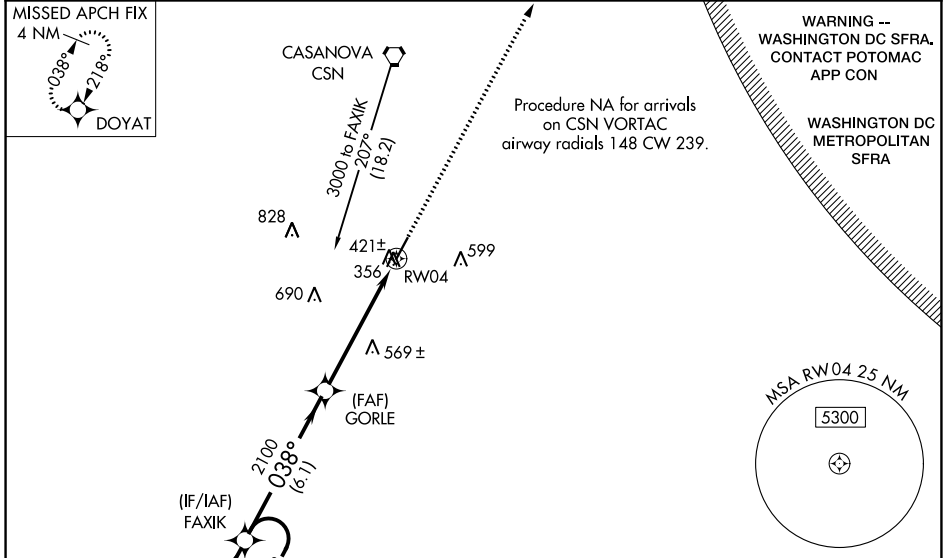
CULPEPER RGNL (CJR)

RNP APCH.

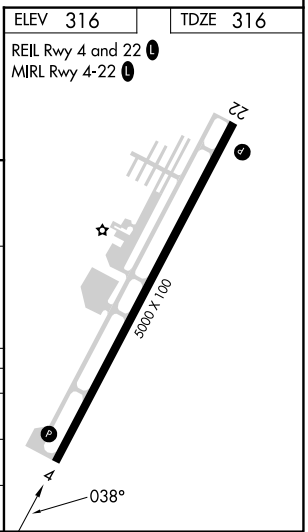
⚠ When VGSI inoperative, procedure NA at night. Baro-VNAV NA when using Washington Dulles Intl altimeter setting. For uncompensated Baro-VNAV systems, LNAV/VNAV NA below -15°C or above 48°C. Rwy 4 helicopter visibility reduction below 1 SM NA. When local altimeter setting not received, use Washington Dulles Intl altimeter setting and increase all DAs 73 feet, all MDAs 80 feet, LPV and LNAV/VNAV all Cats visibility ¼ mile, LNAV Cat D visibility ¼ mile.

MISSED APPROACH: Climb to 3000 direct DOYAT and hold.

AWOS-3 119.325	POTOMAC APP CON 128.525 306.925	CLNC DEL 121.6	UNICOM 123.075 (CTAF)
--------------------------	---	--------------------------	---------------------------------



CATEGORY	A	B	C	D
LPV DA	610-1 294 (300-1)			
LNAV/VNAV DA	833-1¾ 517 (600-1¾)			
LNAV MDA	820-1 504 (600-1)	820-1½ 504 (600-1½)		



NE-3, 11 JUL 2024 to 08 AUG 2024

NE-3, 11 JUL 2024 to 08 AUG 2024