

Flight Procedures Cover Page	Task Action: Abbreviated Amendment	Task Type: SID	Estimated Chart Date: 06/12/2025	APWS Task ID: 3EA006519862429EA9CA92E333C43673	APWS Project ID: 85A46B277264445898E1B6514D10DE3A
Procedure: PALMS FOUR DEPARTURE		Enroute: YES	Specialist: Palmer, Leo		Agreement Number:
Airport ID: KAUS			Airport City: AUSTIN		State: TX
Facility ID:	Facility Type:	Flight Inspection Remark Type:			
<div>Procedure Comments: PENDING NAVAID DATA USED: SSF VOR MAGVAR UPDATE FROM 9E/1965 TO 3E/2025. ACTIVE AIRPORT DATA USED: AUS MV 4E/2020.  PROCESSED IAW TECHNICAL SUPPORT GROUP (AJF-17) MEMO DATED 07/07/2021 GUIDANCE FOR PROCEDURAL CHANGES REQUIRING FLIGHT INSPECTION/VALIDATION.  CHANGES: -ADDITIONAL FLIGHT DATA: CHART: SSF CHANGED FROM "R-084" TO "R-090" AT PALMS. -ADDED MSA: FROM CWK VORTAC 205-300 3100, 300-205 2600.  CONTACT DAVE DANNER (405)954-5077</div> <div>QUALITY 9 CHECKED BEGUE</div> <div>QUALITY 8 CHECKED</div>					

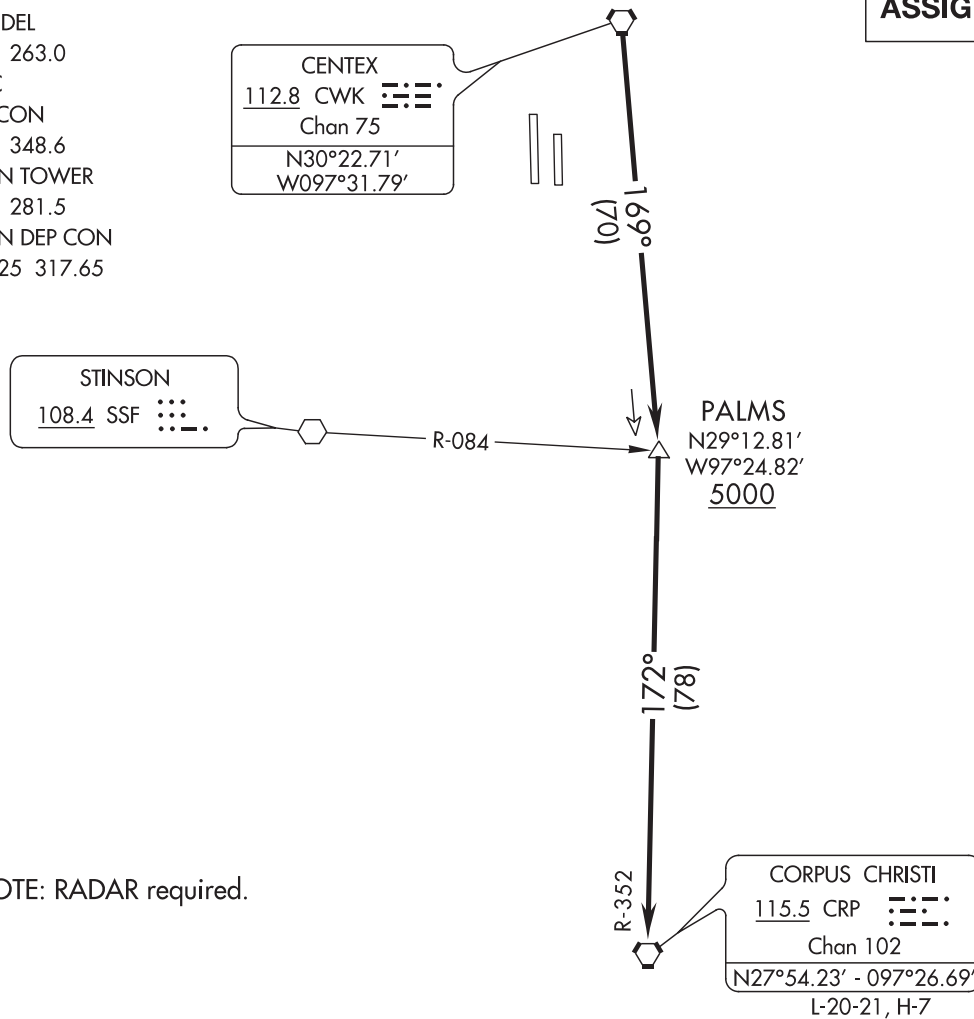
## PALMS THREE DEPARTURE

AL-556 (FAA)

AUSTIN, TEXAS

D-ATIS  
124.4  
CLNC DEL  
125.5 263.0  
CPDLC  
GND CON  
121.9 348.6  
AUSTIN TOWER  
121.0 281.5  
AUSTIN DEP CON  
127.225 317.65

**TOP ALTITUDE:  
ASSIGNED BY ATC**

TAKEOFF MINIMUMS

Rwys 18L/R: Standard.

Rwys 36L/R: Standard with minimum climb of 240' per NM to 2600.

**INFORMATION ONLY**

NOTE: Chart not to scale.



## DEPARTURE ROUTE DESCRIPTION

TAKEOFF RUNWAYS 18L/R, 36L/R: Climb on assigned heading for vectors to CWK VORTAC, then on CWK R-169 to cross PALMS INT at or above 5000, then on CRP R-352 to CRP VORTAC. Maintain altitude assigned by ATC, expect filed altitude 10 minutes after departure.

## Magnetic Variation (MV) Declination Request

☐ New Assignment ☒ Change

Requested by: Travis Bristow

Organization: AJV-A421

Approving Manager: David Danner

Organization: AJV-A421

Current Magnetic Declination of Record: 9 ° East

Epoch Year: 1965

New Magnetic Declination of Record: 3 ° East

Epoch Year: 2025

Airport Information

Airport/NAVAID ID: SSF

NASR ID (if different):

Airport Name:

Airport City:

State/Country:

**Procedure(s)** - list all affected procedures and include the **AMDT#**

\*The AIS Production Workflow System (APWS) has a Task Report Type "MAGVAR" available. Please ensure the **MAGVAR Report Type Code** is selected for all tasks listed that are affected by the MV update.

KSSF VOR RWY 32 AMDT 15  
KSSF RNAV (GPS) RWY 32 AMDT 1  
KSSF TAKEOFF MINS AMDT 3  
KSSF ALAMO SID  
KSSF BOWIE SID  
KSSF LEJON SIF  
KSSF ALISS SIX (RNAV)  
KSSF SLENA TWO (RNAV)  
KSSF SNIDR TWO (RNAV)  
KSSF TJANO TWO (RNAV)

KAUS PALMS FOUR SID  
KSAT ILS OR LOC RWY 04 AMDT 24  
KSAT ILS OR LOC RWY 13R AMDT 16

Navigational Aid Information Changing?**REQUIRED (Check One)**☒ YES☐ NO**INCLUDE ALL FACILITY IDs AND TYPES**

\* Facilities on Airports. At airports with localizer(s) or more than one navigational aid, the MV at the airport reference point (ARP) must be designated and assigned to all facilities at that airport, including all components of the ILS.

SSF VOR

Runway Numbers Changing?**REQUIRED (Check One)**☐ YES☒ NO

\*If YES, include what numbers are changing (from and to).  
Example: 17/35 to 18/36

APWS Estimated Chart Date: 6/12/2025 (TPP)

Comments:

SSF VOR NAVAID MAGVAR UPDATE ONLY. KSSF MAGVAR UPDATE WILL BE UPDATED SEPARATELY.

**Form Submission for Specialists:** Save this form to your computer, then email it (as an attachment) to your Manager.**For Manager Use Only**

Comments (if applicable):



# Federal Aviation Administration

## Initial Development Notification for AIRNAV Pending Records

To: Brian Murphy, Manager Aeronautical Data Team, AJV-A31

From: Patrick Mulqueen, Manager Instrument Flight Procedures Quality Control, AJV-A44

Subject: **ACTION:** Request for Pending Records **SSF\_VOR, STINSON, TX, US**

The Magnetic Variation (MV) data for the airport(s) and/or facility(s) listed will be revised effective concurrent with the publication of the procedure(s) listed below. Estimated Chart Date: 6/12/2025

Current/Assigned MV		New MV	
E 9	1965	E 3	2025
6/12/2025	KSSF	RNAV (GPS) RWY 28 ORIG	MAGVAR
6/12/2025	KSSF	RNAV (GPS) RWY 32 AMDT 1	MAGVAR
6/12/2025	KSSF	SID ALAMO FOUR SAN ANTONIO TX KSSF	MAGVAR
6/12/2025	KSSF	SID ALISS SIX (RNAV) SAN ANTONIO TX KSSF	MAGVAR RNAV SID
6/12/2025	KSSF	SID BOWIE EIGHT SAN ANTONIO TX KSSF	MAGVAR
6/12/2025	KSSF	SID LEJON FIVE SAN ANTONIO TX KSSF	MAGVAR
6/12/2025	KSSF	SID SLENA TWO (RNAV) STINSON MUNI KSSF	MAGVAR RNAV SID
6/12/2025	KSSF	SID SNIDR TWO (RNAV) STINSON MUNI KSSF	MAGVAR RNAV SID
6/12/2025	KSSF	SID TJANO TWO (RNAV) STINSON MUNI KSSF	MAGVAR RNAV SID
6/12/2025	KSSF	SID YODUH TWO (RNAV) STINSON MUNI KSSF	MAGVAR RNAV SID
6/12/2025	KSSF	TAKEOFF MINIMUMS AND (OBSTACLE) DEPARTURE PROCEDURES	MAGVAR
6/12/2025	KSSF	VOR RWY 32 AMDT 15	MAGVAR
06/12/2025	KSAT	ILS OR LOC RWY 04 AMDT 24	MAGVAR
06/12/2025	KSAT	ILS OR LOC RWY 13R AMDT 16	MAGVAR

NAVAID ID / RWY	Type / Old	No.	Use / New RWY/Note
SSF	VOR		VOR

SSF VOR NAVAID MAGVAR UPDATE ONLY. KSSF AIRPORT MAGVAR UPDATE WILL BE SENT SEPARATELY.

IF you have any questions please notify: David.Danner@faa.gov

Processed Tuesday, November 26, 2024