

Flight Procedures Cover Page	Task Action: Abbreviated Amendment	Task Type: IAP	Estimated Chart Date: 08/10/2023	APWS Task ID: 40D7C928FD13426BABA75893239CD4A5	APWS Project ID: 00A1C7CB20F04668A8A25B2869816382
Procedure: HI - TACAN RWY 14 AMDT 4C		Enroute: NO	Specialist: Johnson, Daniel		Agreement Number:
Airport ID: KJAX			Airport City: JACKSONVILLE		State: FL
Facility ID: CRG	Facility Type: VORTAC	Flight Inspection Remark Type:			
<div>Procedure Comments: UTILIZED ACTIVE AIRNAV DATA FOR KJAX RWY 14. DELETED AMG FEEDER SEGMENT. PROCESSED IAW TECHNICAL SUPPORT GROUP (AJF-17) MEMO DATED 07/07/2021 GUIDANCE FOR PROCEDURAL CHANGES REQUIRING FLIGHT INSPECTION/VALIDATION. CONTACT JASON KRETSCHMER: AJV-A421 , 405-954-4019</div> <div><div>Digitally signed by JASON KRETSCHMER May 19, 2023</div><div>QUALITY 10 CHECKED</div></div>					

OLD

HI-TACAN RWY 14

JACKSONVILLE INTL (KJAX)

VORTAC CRG
114.5
Chan **92**

APCH CRS
136°

Rwy Idg	7701
TDZE	27
Arpt Elev	30

MALSR



MISSED APPROACH: Climb to 2000 then climbing left turn to 4000 on CRG VORTAC R-316 to HAMOC 23 DME and hold.

* When ALS inop, increase vis to 1 mile.

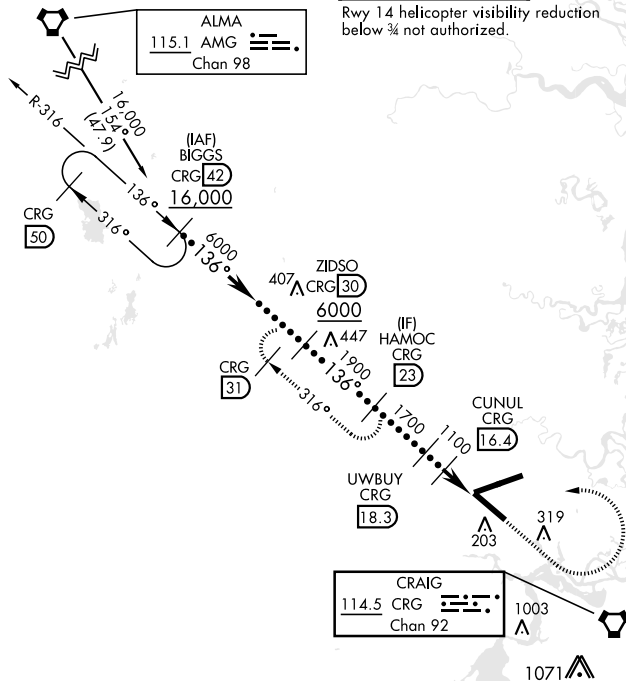
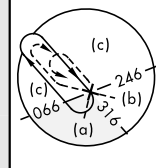
ATIS
125.85

APP CON
119.0 269.9

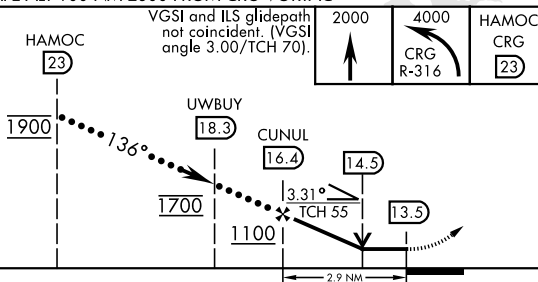
TOWER
118.3 317.7


GND CON
121.9 348.6

CLNC DEL
119.5 290.275



EMERG SAFE ALT 100 NM 2800 FROM CRG VORTAC



CATEGORY	C	D	E
S-14 *	400- $\frac{3}{4}$	373 (400- $\frac{3}{4}$)	
 CIRCLING	580-1 $\frac{1}{2}$ 550 (600-1 $\frac{1}{2}$)	640-2 610 (700-2)	760-2 $\frac{1}{2}$ 730 (800-2 $\frac{1}{2}$)

ELEV 30 TDZE 27

136° 4.8 NM from FAF

10,000 x 150

701 x 130

83 ft ±

TWR 191

☆ 202

REIL Rwy 32
HIRL Rwy 8-26, 14-32
TDZL/CL Rwy 8-26, 14

JACKSONVILLE, FLORIDA

30°30'N-81°41'W

JACKSONVILLE INTL (KJAX)

Amdt 4B 09SEP21

HI-TACAN RWY 14

SE-3, 23 MAR 2023 to 20 APR 2023

SE-3, 23 MAR 2023 to 20 APR 2023