

Flight Procedures Cover Page	Task Action: Abbreviated Amendment	Task Type: Graphical DP	Estimated Chart Date: 05/14/2026	APWS Task ID: 410A1E82E07A4C918EC527BE61BD5647	APWS Project ID: 07A790B702C04DBD90E886DF94712515
Procedure: KAMUELA TWO DEPARTURE (OBSTACLE)		Enroute: YES	Specialist: Palmer, Leo		Agreement Number:
Airport ID: PHMU			Airport City: KAMUELA		State: HI
Facility ID:	Facility Type:	Flight Inspection Remark Type:			

**Procedure Comments:**

ABBREVIATED AMENDMENT TO CHANGE DP COMPUTER CODE FROM "KAMUE1.KAMUE" to "KAMUE2.MUE" .

WAIVER ON FILE FOR "8260.46K Para 3-1-5.b. Computer Identification Codes" USING AIRPORT NAVAID 3-LETTER ID. - AFS REQUIRED.

PROCESSED IAW TECHNICAL SUPPORT GROUP (AJF-17) MEMO DATED 07/07/2021, SUBJECT: GUIDANCE FOR PROCEDURAL CHANGES REQUIRING FLIGHT INSPECTION/VALIDATION.

CONTACT MANAGER CASIMIR TABAKA (405)954-7931



**1. FLIGHT PROCEDURE IDENTIFICATION:**

KAMUELA, HI  
WAIMEA-KOHALA (MUE) (PHMU)  
KAMUELA OBSTACLE DEPARTURE

**2. WAIVER REQUIRED AND APPLICABLE STANDARD:**

8260.46K Para 3-1-5.b. Computer Identification Codes.

.b Graphic ODPs and SIDs. Computer identification Codes are assigned to graphic DPs by using the abbreviated name of the DP; e.g., a NAVAID or airport three-letter NAVAID or airport three-letter ID, a four-letter geographical abbreviation, or a five-letter fix/waypoint name, or other five-letter code, followed by the current DP number, then a dot, followed by the fix/NAVAID ID where the DP ends. For example, the CINCINNATI EIGHT DEPARTURE in paragraph 3-1-3.d. is coded "CVG8.CVG"; the FORT LAUDERDALE SEVEN DEPARTURE in paragraph 3-1-4 is coded "FLL7.FLL" and the "TATES TWO DEPARTURE in paragraph 3-1-3.d is coded "TATES2.TATES."

**3. REASON FOR WAIVER (JUSTIFICATION FOR NONSTANDARD TREATMENT):**

ATC is requesting a nonstandard Computer Identification Code (KAMUE#.MUE) for adaptation into their Off Shore Data Processing System (OFDPS) and to help enhance operations at the non-towered airport. "#" represents any amendment number. This procedure successfully passed flight inspection and published with a computer code KAMUE1.KAMUE. ATC's automation equipment, OFDPS, is unable to adapt the second half of this code '.KAMUE because KAMUE is not entered into the National Airspace System (NAS) as a fix or NAVAID.

**4. EQUIVALENT LEVEL OF SAFETY PROVIDED:**

OFDPS is able to adapt Computer Identification Code name KAMUE#.MUE.  
Procedure has been flight inspected SAT.

**5. ALTERNATIVE ACTIONS DEEMED NOT FEASIBLE:**

Splitting the KAMUELA OBSTACLE DEPARTURE into two conventional graphic ODP's with corrected Computer Identification Code names (JASON#.JASON and VELLA#.VELLA) is not feasible until Airspace Modernization Roadmap (AMR) is initiated.  
Adding a SID as an alternative to graphical departure is not feasible until AMR.

**6. COORDINATION WITH USER ORGANIZATIONS (SPECIFY):**

FLIGHT PROCEDURES AND AIRSPACE GROUP (AFS-420)  
WESTERN FLIGHT PROCEDURES TEAM - OSG (AJV-W240)  
HONOLULU CONTROL FACILITY (HCF)  
NATIONAL AIR TRAFFIC CONTROL (NATCA)

**7. SUBMITTED BY:**

DATE            OFFICE IDENTIFICATION    TITLE

**SIGNATURE**

*Digitally signed by*  
**CASIMIR L TABAKA**  
Jan 22, 2026

**8. AFS ACTIONS:**

APPROVED     DISAPPROVED     NOT REQUIRED

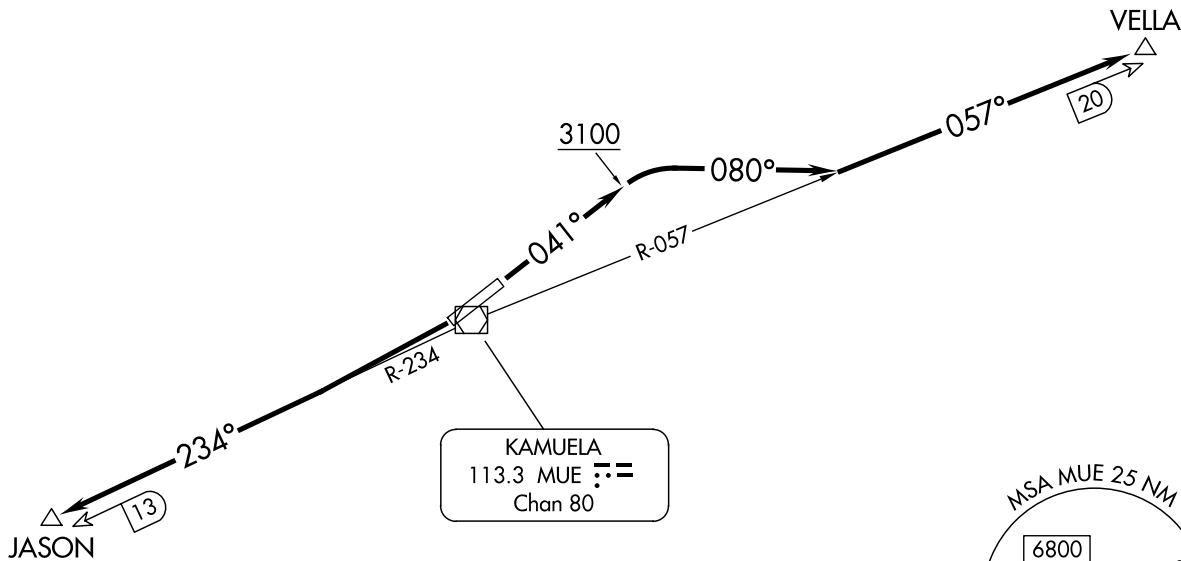
**COMMENTS:**

DATE            ROUTING SYMBOL            SIGNATURE

# KAMUELA ONE DEPARTURE (OBSTACLE)

HCF CENTER  
118.45 278.3  
AWOS-3PT  
120.0  
CTAF  
122.9

OLD



### TAKEOFF MINIMUMS

Rwy 4: 400-2½ or standard with minimum climb of 240'/NM to 3100.  
Rwy 22: Standard.

### TAKEOFF OBSTACLE NOTES

- Rwy 4: Terrain 9' from DER, 215' right of centerline, 2675' MSL.
- Pole, fence beginning 158' from DER, 7' right of centerline, up to 26' AGL/2702' MSL.
- Terrain 1172' from DER, 161' left of centerline, 2701' MSL.
- Fence 2754' from DER, 322' right of centerline, 17' AGL/2741' MSL.
- Trees beginning 5201' from DER, 178' right of centerline, up to 2817' MSL.
- Tree 5332' from DER, 111' left of centerline, 2829' MSL.
- Trees 1.2 NM from DER, 738' left and right of centerline, up to 2889' MSL.
- Towers beginning 1.7 NM from DER, 1095' left of centerline, up to 138' AGL/2992' MSL.

NOTE: Chart not to scale

### DEPARTURE ROUTE DESCRIPTION

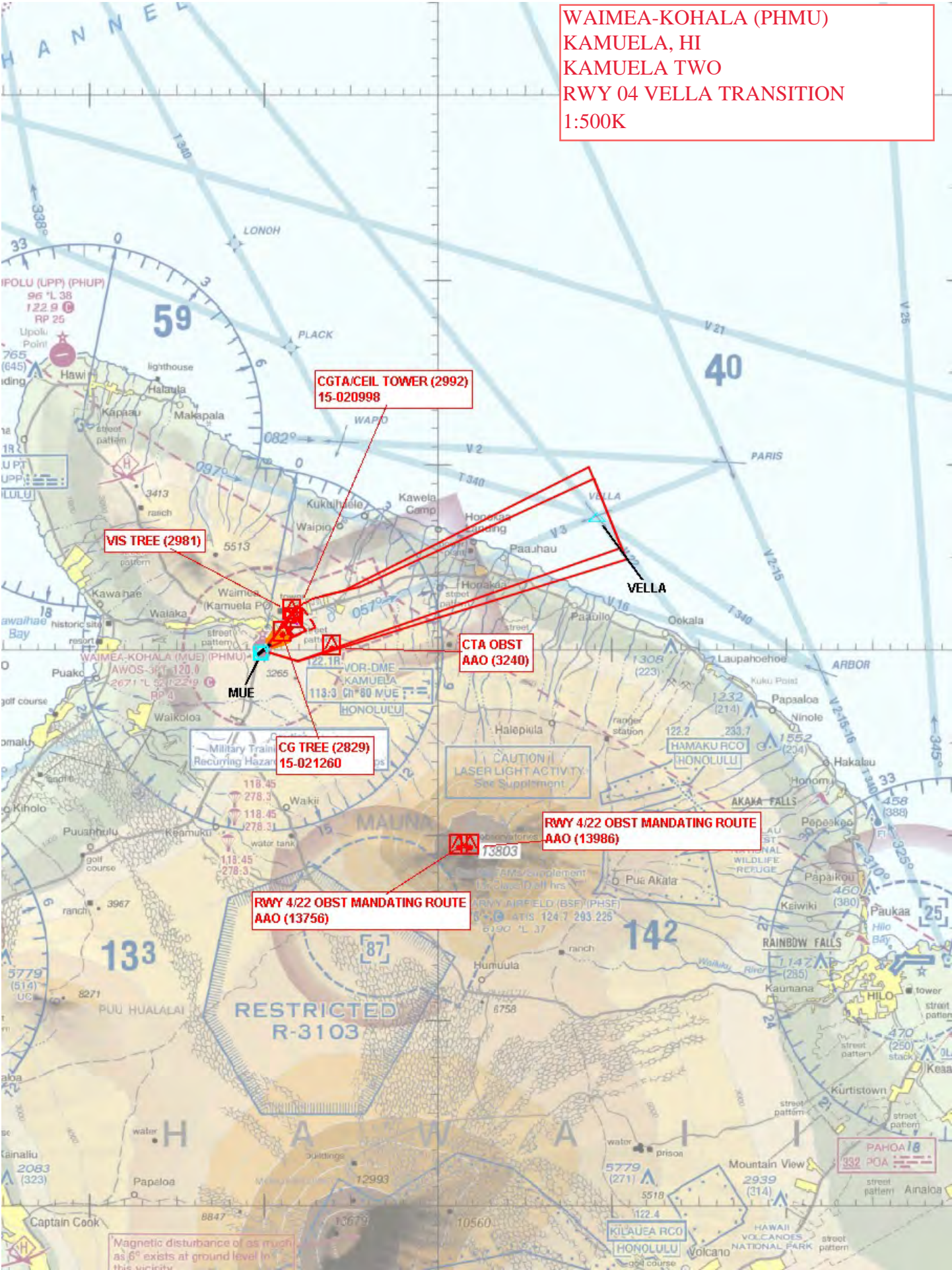
TAKEOFF RUNWAY 4: Climb on heading 041° to 3100 then climbing right turn heading 080° and MUE VOR/DME R-057 to cross VELLA at or above MEA/MCA for route of flight.

TAKEOFF RUNWAY 22: Climb on MUE VOR/DME R-234 to cross JASON at or above MEA southwest bound.

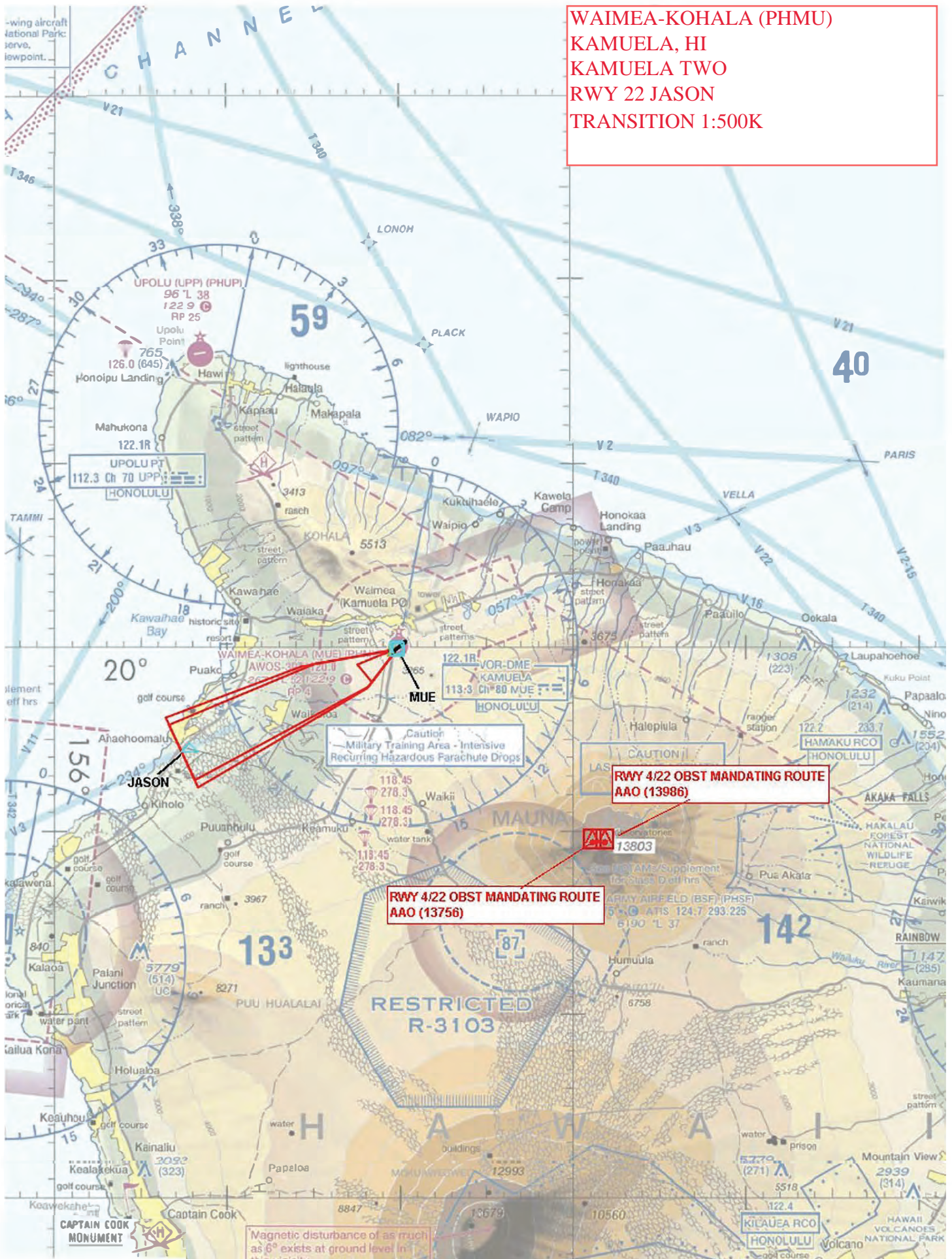
PAC, 22 JAN 2026 to 19 MAR 2026

PAC, 22 JAN 2026 to 19 MAR 2026

WAIMEA-KOHALA (PHMU)  
KAMUELA, HI  
KAMUELA TWO  
RWY 04 VELLA TRANSITION  
1:500K



WAIMEA-KOHALA (PHMU)  
KAMUELA, HI  
KAMUELA TWO  
RWY 22 JASON  
TRANSITION 1:500K



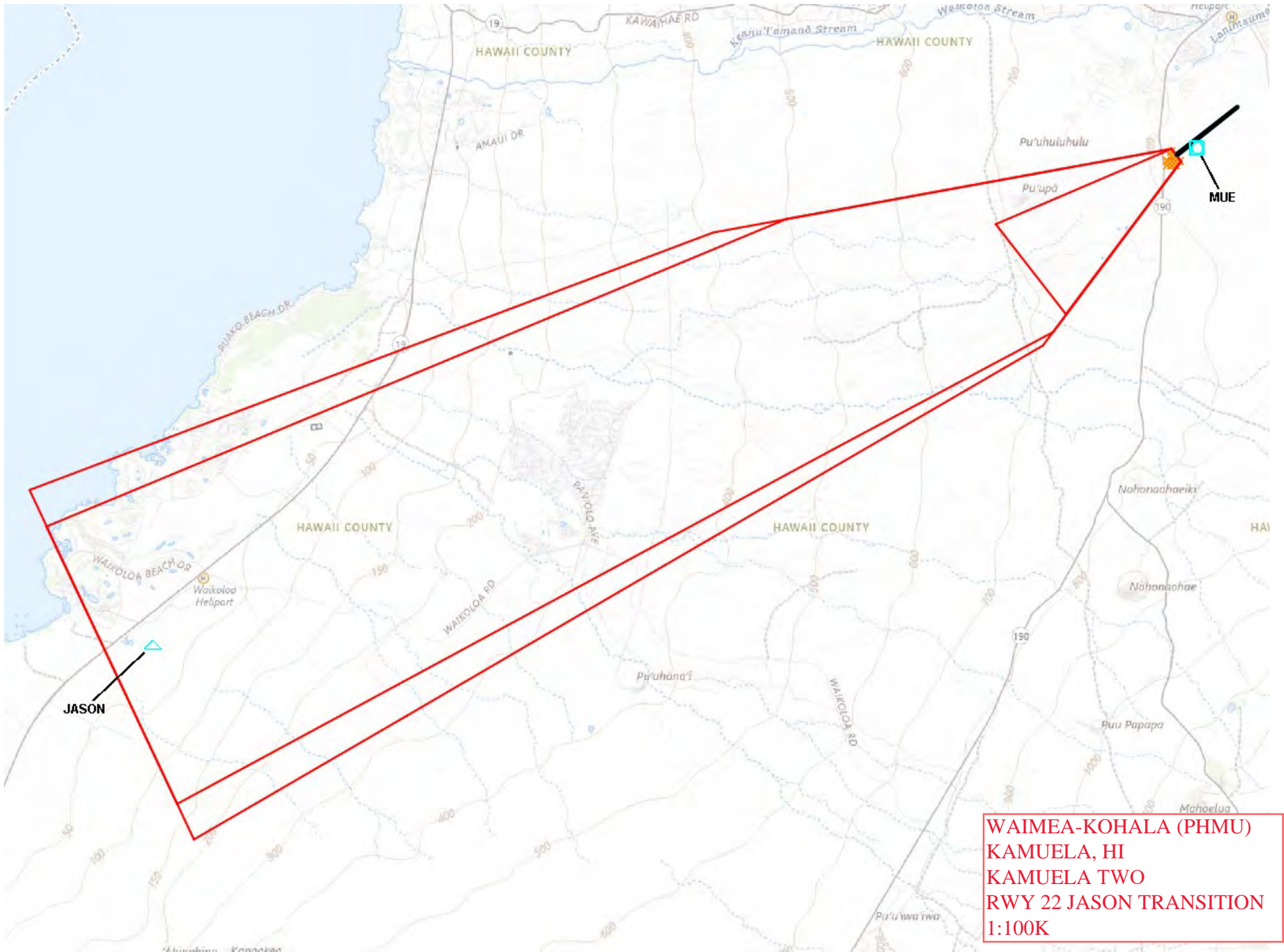
UPOLU PT  
112.3 Ch 70 UPP  
HONOLULU

Caution  
Military Training Area - Intensive  
Recurring Hazardous Parachute Drops

RWY 4/22 OBST MANDATING ROUTE  
AAO (13986)

RWY 4/22 OBST MANDATING ROUTE  
AAO (13756)

Magnetic disturbance of as much as 6° exists at ground level in this area.



**WAIMEA-KOHALA (PHMU)  
KAMUELA, HI  
KAMUELA TWO  
RWY 22 JASON TRANSITION  
1:100K**

**WAIMEA-KOHALA (PHMU)  
KAMUELA, HI  
KAMUELA TWO  
RWY 04 VELLA TRANSITION  
1:100K**

