

Flight Procedures Cover Page	Task Action: Abbreviated Amendment	Task Type: SID	Estimated Chart Date: 05/14/2026	APWS Task ID: 419224B6ECCA4D83AFEA0C535F53A8C6	APWS Project ID: 0ED3892DD13A4C5281351C2B85867408
Procedure: BARMY SIX (RNAV) DEPARTURE		Enroute: YES	Specialist: Keefer, John		Agreement Number:
Airport ID: KCLT			Airport City: CHARLOTTE		State: NC
Facility ID:	Facility Type:	Flight Inspection Remark Type:			

**Procedure Comments:**

Runway renumber from 18R/36L to 19R/01L.

Pending data used for CLT: 5/14/2026.

Active data used for satellite airports.

PROCESSED IAW TECHNICAL SUPPORT (AJF-17) MEMO DATED 07/07/2021, SUBJECT: GUIDANCE FOR PROCEDURAL CHANGES REQUIRING FLIGHT INSPECTION/VALIDATION.

Contact Casimir Tabaka 405-954-7931.



(BARMY5.BARMY) 25051

**ACTIVE**

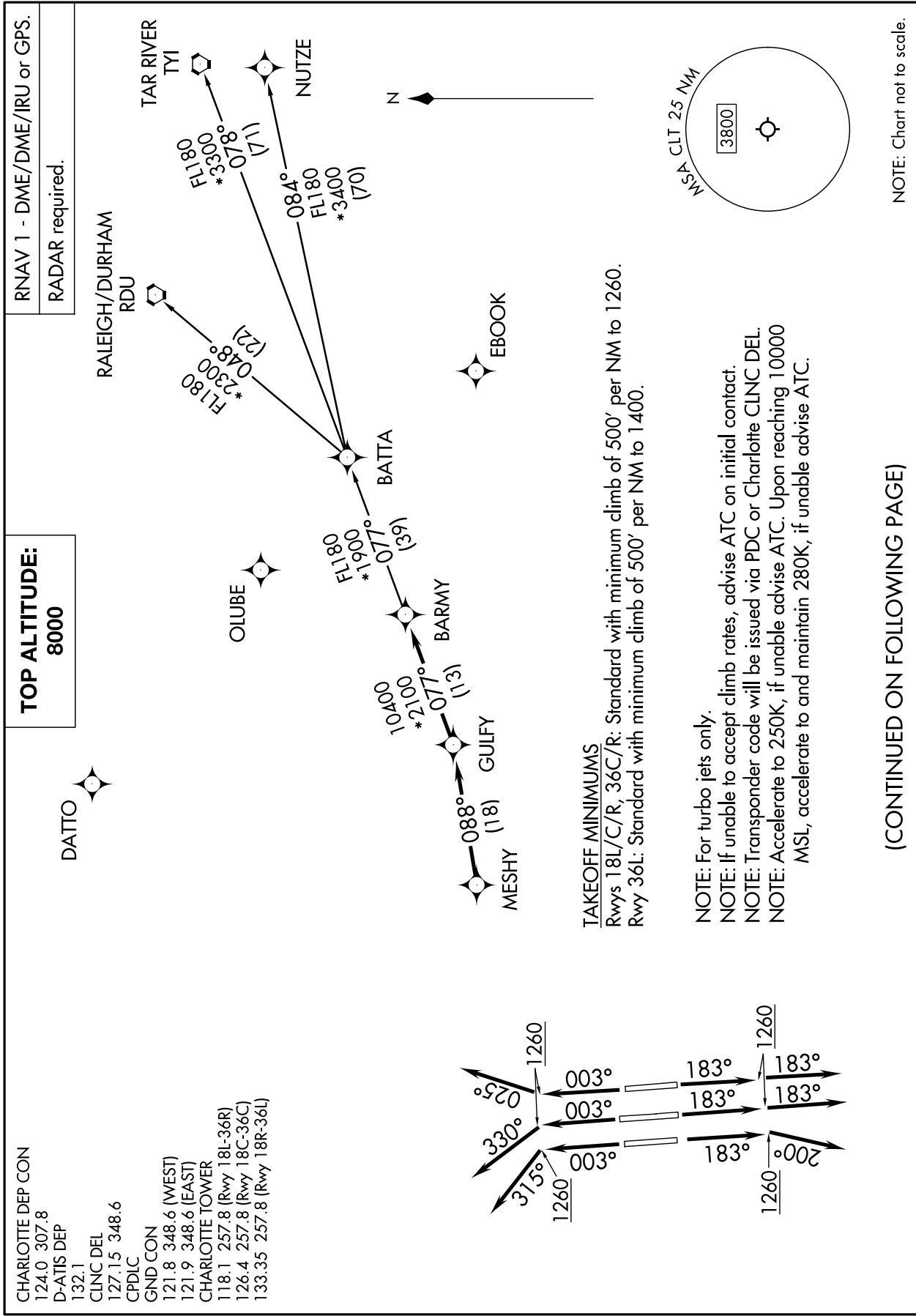
AL-78 (FAA)

CHARLOTTE/DOUGLAS INTL (CLT)

CHARLOTTE, NORTH CAROLINA

# BARMY FIVE DEPARTURE (RNAV)

SE-2, 30 OCT 2025 to 27 NOV 2025



BARMY FIVE DEPARTURE (RNAV)  
(BARMY5.BARMY) 21MAR24

CHARLOTTE, NORTH CAROLINA  
CHARLOTTE/DOUGLAS INTL (CLT)

SE-2, 30 OCT 2025 to 27 NOV 2025

**ACTIVE**

(BARMY5.BARMY) 24081

AL-78 (FAA)

CHARLOTTE/DOUGLAS INTL (CLT)  
CHARLOTTE, NORTH CAROLINA

# BARMY FIVE DEPARTURE (RNAV)



## DEPARTURE ROUTE DESCRIPTION SEE ADDITIONAL REQUIREMENTS ON AAUP

TAKEOFF RUNWAYS 18L/C: Climb on heading 183° to 1260, then on heading 183° or as assigned by ATC on RADAR vectors to MESHY, thence. . . .

TAKEOFF RUNWAY 18R: Climb on heading 183° to 1260, then on heading 200° or as assigned by ATC on RADAR vectors to MESHY, thence. . . .

TAKEOFF RUNWAY 36L: Climb on heading 003° to 1260, then on heading 315° or as assigned by ATC on RADAR vectors to MESHY, thence. . . .

TAKEOFF RUNWAY 36C: Climb on heading 003° to 1260, then on heading 330° or as assigned by ATC on RADAR vectors to MESHY, thence. . . .

TAKEOFF RUNWAY 36R: Climb on heading 003° to 1260, then on heading 025° or as assigned by ATC on RADAR vectors to MESHY, thence. . . .

. . . .on depicted route to BARMY, then on assigned transition. Maintain 8000.  
Expect clearance to filed altitude within 10 minutes after departure.

NUTZE TRANSITION (BARMY5.NUTZE)

RALEIGH/DURHAM TRANSITION (BARMY5.RDU)

TAR RIVER TRANSITION (BARMY5.TYI)

SE-2, 30 OCT 2025 to 27 NOV 2025

SE-2, 30 OCT 2025 to 27 NOV 2025