

Flight Procedures Cover Page	Task Action: Abbreviated Amendment	Task Type: SID	Estimated Chart Date: 10/31/2024	APWS Task ID: 44303EE9E30B47CD8095D7EC3D004983	APWS Project ID: FFBE850F22444CF7A7093FB4C46DA597
Procedure: DARCY SEVEN DEPARTURE (RNAV)		Enroute: YES	Specialist: Johnson, Timothy		Agreement Number:
Airport ID: KGYG			Airport City: GARY/CHICAGO		State: IN
Facility ID:	Facility Type:	Flight Inspection Remark Type:			

Procedure Comments:
ACTIVE DATA USED.

CHANGE CITY NAME FROM GARY TO GARY/CHICAGO.

Processed IAW Technical Support Group (AJF-17) Memo dated 07/07/2021, Guidance for Procedural Changes Requiring Flight Inspection/Validation.

CONTACT: DAVID DANNER (405)-954-5077.

08/22/24: THIS IS A CORRECTED COPY OF THE FORM APPROVED ON 08/15/24.

8260-2 FILE: DARCY, DONVE, DREGS, DUMGE

1. REMOVED "CONTROLLER" FROM REQUIRED CHARTING.
2. ADDED "CONTROLLER LOW" TO REQUIRED CHARTING.
3. ADDED "CONTROLLER HIGH" TO REQUIRED CHARTING.

8260-2 FILE: SCOTO

1. CHANGED "CONTROLLER" TO "CONTROLLER LOW" IN REQUIRED CHARTING.



(DARCY6.DARCY) 19283

AL-748 (FAA)

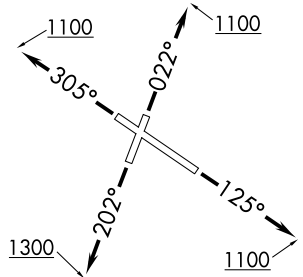
OLD

GARY/CHICAGO INTL (GYY)
GARY, INDIANA

DARCY SIX DEPARTURE (RNAV)

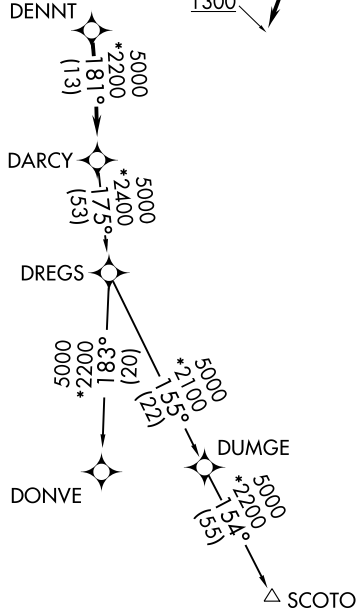
ATIS
134.575
GND CON
121.9
GARY TOWER ★
125.6
CHICAGO DEP CON
133.1 285.6

**TOP ALTITUDE:
3000**



TAKEOFF MINIMUMS:

Rwy 2: Standard with minimum climb of 323' per NM to 900.
Rwys 12, 20, 30: Standard.



- NOTE: RADAR required.
- NOTE: DME/DME/IRU or GPS required.
- NOTE: RNAV 1.
- NOTE: Turbojet departures maintain 250K until advised by ATC.

NOTE: Chart not to scale.

DEPARTURE ROUTE DESCRIPTION

- TAKEOFF RUNWAY 2: Climb heading 022° to 1100, then as assigned by ATC, for vectors to DENNT. Thence. . . .
- TAKEOFF RUNWAY 12: Climb heading 125° to 1100, then as assigned by ATC, for vectors to DENNT. Thence. . . .
- TAKEOFF RUNWAY 20: Climb heading 202° to 1300, then as assigned by ATC, for vectors to DENNT. Thence. . . .
- TAKEOFF RUNWAY 30: Climb heading 305° to 1100, then as assigned by ATC, for vectors to DENNT. Thence. . . .

. . . . on track 181° to DARC, then on (transition). Maintain 3000.
Expect filed altitude 10 minutes after departure.

- DONVE TRANSITION (DARCY6.DONVE):
- SCOTO TRANSITION (DARCY6.SCOTO):

DARCY SIX DEPARTURE (RNAV)
(DARCY6.DARCY) 10OCT19

GARY, INDIANA
GARY/CHICAGO INTL (GYY)

EC-2, 21 MAR 2024 to 18 APR 2024

EC-2, 21 MAR 2024 to 18 APR 2024