

FEDERAL AVIATION ADMINISTRATION  
 FLIGHT STANDARDS SERVICE  
 STANDARD TERMINAL ARRIVAL (STAR)

Bearings, headings, courses, tracks and radials are magnetic. Elevations and altitudes are in feet, MSL. Altitudes are minimum altitudes unless otherwise indicated.  
 Ceilings are in feet above airport elevation. Distances are in nautical miles. Visibilities are in statute miles or feet RVR unless otherwise indicated.

Arrival Name <b>RYYMN (RNAV)</b>	Number <b>FOUR</b>	STAR Computer Code <b>RYYMN.RYYMN4</b>	Superseded Number <b>THREE</b>	Dated <b>10/02/2025</b>	Effective Date
-------------------------------------	-----------------------	---	-----------------------------------	----------------------------	----------------

TRANSITION ROUTES:

Transition Name	Transition Computer Codes	From FIX/NAVAID	To FIX/NAVAID	Course	Distance	MEA	MOCA	MAA	Crossing Altitudes / Fixes
LOONE	LOONE.RYYMN4	LOONE	LOONE						
			ULTRA	217.14	27.57	12000	3100	AT/BELOW FL230	
			RROCC	184.71	06.00	11000	3100	AT/BELOW FL230	
NMANN	NMANN.RYYMN4	NMANN	RYYMN	184.71	26.27	11000	3100	BETWEEN 15000 AND FL190	
			SOKOL	104.54	50.00	15000	3100		
			RANTS	105.16	31.88	15000	3100	AT FL240	
RANTS	RANTS.RYYMN4	RANTS	RYYMN	130.83	37.76	11000	3100	BETWEEN 15000 AND FL190	
			RANTS					AT FL240	
SOKOL	SOKOL.RYYMN4	SOKOL	RYYMN	130.83	37.76	11000	3100	BETWEEN 15000 AND FL190	
			RANTS	105.16	31.88	15000	3100	AT FL240	
			RYYMN	130.83	37.76	11000	3100	BETWEEN 15000 AND FL190	
TONES	TONES.RYYMN4	TONES	TONES						
			ULTRA	159.85	41.66	12000	3100	AT/BELOW FL230	
			RROCC	184.71	06.00	11000	3100	AT/BELOW FL230	
			RYYMN	184.71	26.27	11000	3100	BETWEEN 15000 AND FL190	
ULTRA	ULTRA.RYYMN4	ULTRA	ULTRA						AT/BELOW FL230
			RROCC	184.71	06.00	11000	3100	AT/BELOW FL230	
			RYYMN	184.71	26.27	11000	3100	BETWEEN 15000 AND FL190	



FEDERAL AVIATION ADMINISTRATION  
 FLIGHT STANDARDS SERVICE  
 STANDARD TERMINAL ARRIVAL (STAR)

Bearings, headings, courses, tracks and radials are magnetic. Elevations and altitudes are in feet, MSL. Altitudes are minimum altitudes unless otherwise indicated.  
 Ceilings are in feet above airport elevation. Distances are in nautical miles. Visibilities are in statute miles or feet RVR unless otherwise indicated.

Arrival Name	Number	STAR Computer Code	Superseded Number	Dated	Effective Date
<b>RYYMN (RNAV)</b>	<b>FOUR</b>	<b>RYYMN.RYYMN4</b>	<b>THREE</b>	<b>10/02/2025</b>	

**ARRIVAL ROUTE DESCRIPTION:**

FROM RYYMN ON TRACK 156.73/10.00 TO PEKIE.

LANDING RWY 2L/C/R: FROM PEKIE ON TRACK 156.78/4.00 TO CROSS JONIL BETWEEN 11000 AND 15000, THEN ON TRACK 156.82/18.44 TO CROSS FFISK AT OR ABOVE 10000 AND AT 250 KIAS, THEN ON TRACK 156.92/6.00 TO CROSS JNKNS AT OR ABOVE 9000 AND AT 230 KIAS, THEN ON TRACK 199.75/6.95 TO CROSS WAMAR AT 8000 AND AT 210 KIAS, THEN ON TRACK 199.75. EXPECT RADAR VECTORS TO FINAL APPROACH COURSE.

LANDING RWY 13: FROM PEKIE ON TRACK 156.78/4.00 TO CROSS JONIL BETWEEN 11000 AND 15000, THEN ON TRACK 151.24/8.34 TO CROSS WILEE AT 9000 AND AT 210 KIAS, THEN ON TRACK 136.28/4.00 TO CROSS DRUMZ AT 9000 AND AT 210 KIAS, THEN ON TRACK 136.28. EXPECT RADAR VECTORS TO FINAL APPROACH COURSE.

LANDING RWY 20L/C/R: FROM PEKIE ON TRACK 177.67/3.61 TO CROSS TONKN AT 11000 AND AT 250 KIAS, THEN ON TRACK 177.68/4.35 TO BBONZ, THEN ON TRACK 089.12/11.35 TO CROSS TURNT AT 7000 AND AT 210 KIAS, THEN ON TRACK 110.90. EXPECT RADAR VECTORS TO FINAL APPROACH COURSE.

LANDING RWY 31: FROM PEKIE ON TRACK 156.78/4.00 TO CROSS JONIL BETWEEN 11000 AND 15000, THEN ON TRACK 167.09/24.85 TO CROSS KLOSE AT OR ABOVE 10000 AND AT 250 KIAS, THEN ON TRACK 165.45/6.30 TO CROSS NASHN AT OR ABOVE 9000 AND AT 250 KIAS, THEN ON TRACK 147.49/4.01 TO CROSS FYYRE AT 9000 AND AT 210 KIAS, THEN ON TRACK 136.30. EXPECT RADAR VECTORS TO FINAL APPROACH COURSE.

**PBN REQUIREMENT NOTES:**

RNAV 1 - DME/DME/IRU OR GPS

**EQUIPMENT REQUIREMENT NOTES:**

RADAR REQUIRED

**PROCEDURAL DATA NOTES:**

NOTE: JET AIRCRAFT ONLY

NOTE: LANDING NORTH USE RWY 2L TRANSITION, LANDING SOUTH USE RWY 20R TRANSITION.

NOTE: EXPECT TO RECEIVE LANDING DIRECTIONS AND DESCEND VIA CLEARANCE FROM MEMPHIS CENTER. EXPECT RWY ASSIGNMENT FROM NASHVILLE APPROACH.

NOTE: RANTS, ULTRA TRANSITIONS, ATC ASSIGNED ONLY.

**FIXES AND/OR HOLDING PATTERNS:**

CHART HOLDING AT LOONE: HOLD N, RT, 182.00 INBOUND, 10 NM LEGS.

CHART HOLDING AT NMANN: HOLD W, LT, 104.54 INBOUND, 15 NM LEGS.

CHART HOLDING AT RANTS: HOLD NW, RT, 130.83 INBOUND, 10 NM LEGS.

CHART HOLDING AT RYYMN: HOLD NW, RT, 156.73 INBOUND, 10 NM LEGS.

CHART HOLDING AT ULTRA: HOLD N, RT, 159.85 INBOUND, 10 NM LEGS.

**COMMUNICATIONS:**

**AIRPORTS SERVED:**

<u>AIRPORT ID</u>	<u>CITY</u>	<u>STATE</u>
BNA	NASHVILLE	TN

**LOST COMMUNICATIONS PREFERENCES:**



FEDERAL AVIATION ADMINISTRATION  
 FLIGHT STANDARDS SERVICE  
 STANDARD TERMINAL ARRIVAL (STAR)

Bearings, headings, courses, tracks and radials are magnetic. Elevations and altitudes are in feet, MSL. Altitudes are minimum altitudes unless otherwise indicated.  
 Ceilings are in feet above airport elevation. Distances are in nautical miles. Visibilities are in statute miles or feet RVR unless otherwise indicated.

Arrival Name	Number	STAR Computer Code	Superseded Number	Dated	Effective Date
<b>RYYMN (RNAV)</b>	<b>FOUR</b>	<b>RYYMN.RYYMN4</b>	<b>THREE</b>	<b>10/02/2025</b>	

**REMARKS:**

3100 FT MOCA DUE TO 2049 MSL TOWERS (47-002272 AND 47-000967) LOCATED DOWNSTREAM IN RWY TRANSITIONS.  
 ENVIRONMENTAL REVIEW UNDER ORDER 1050.1 (LATEST EDITION) AND THE NOISE SCREENING HAVE BEEN ACCOMPLISHED.

**ADDITIONAL FLIGHT DATA:**

DME/DME ASSESSMENT: SAT (RNP 2.0)  
 MAG VAR: BNA 03W/2010  
 CHART AT WAMAR TERMINUS: BNA LDG RWY 2L/C/R  
 CHART AT TURNT TERMINUS: BNA LDG RWY 20L/C/R  
 CHART AT DRUMZ TERMINUS: BNA LDG RWY 13  
 CHART AT FYYRE TERMINUS: BNA LDG RWY 31

**FLIGHT INSPECTED BY:**

JOEL P MURPHY

**ORGANIZATION:**

AJF

**DATE:**

05/18/2026

Flight Inspected Signature:

*Digitally signed by*  
**ROBERT G HAMILTON**

May 18, 2026

*Digitally signed by*

**PARNELL R PRASSADA**

Mar 23, 2026

**DEVELOPED BY:**

PARNELL PRASSADA

AJV-A432

02/10/2026

Developed By Signature:

*Digitally signed by*

**ROBERT G HAMILTON**

May 18, 2026

**APPROVED BY:**

CASIMIR TABAKA

AJV-A432

Approved By Signature:

**CHANGES:**

1. INCREASED ALL ENROUTE TRANSITION MOCA VALUES TO 3100 FT.
2. ENROUTE TRANSITION: ADDED RROCC AND ASSOCIATED INFORMATION TO ULTRA, LOONE, AND TONES TRANSITIONS.
3. ENROUTE TRANSITION: UPDATED RANTS CROSSING RESTRICTION FROM AT/ABOVE FL240 TO AT FL240.
4. ENROUTE TRANSITION: ADDED 280 KIAS RESTRICTION AT RANTS.
5. COMMON ROUTE: CHANGED 280 KIAS RESTRICTION AT RYYMN TO 270 KIAS.
6. COMMON ROUTE: REMOVED JONIL.
7. RUNWAY TRANSITION: ADDED 11000B15000 CROSSING RESTRICTION AT JONIL.
8. RUNWAY TRANSITION: ADDED PEKIE TO ALL RUNWAY TRANSITIONS.
9. RUNWAY TRANSITION: ADDED TONKN/BBONZ AND ASSOCIATED INFORMATION TO RWY 20L/C/R.
10. ARRIVAL ROUTE DESCRIPTION: UPDATED ALL RWYS "FROM JONIL ON TRACK..." TO "FROM PEKIE ON TRACK..."
11. REMARKS: ADDED 3100 FT MOCA DUE TO 2049 MSL TOWERS (47-002272 AND 47-000967) LOCATED DOWNSTREAM IN RWY TRANSITIONS.

**REASONS:**

- 1,11. IAW 8260.3G, 2-2-7D(3).
- 2-8. PER ATC REQUEST FOR TRAFFIC FLOW MANAGEMENT.
- 9-10. PER FLIGHT CHECK RESULT, ARRIVAL MODIFIED TO MEET JET AIRCRAFT PERFORMANCE REQUIREMENT.

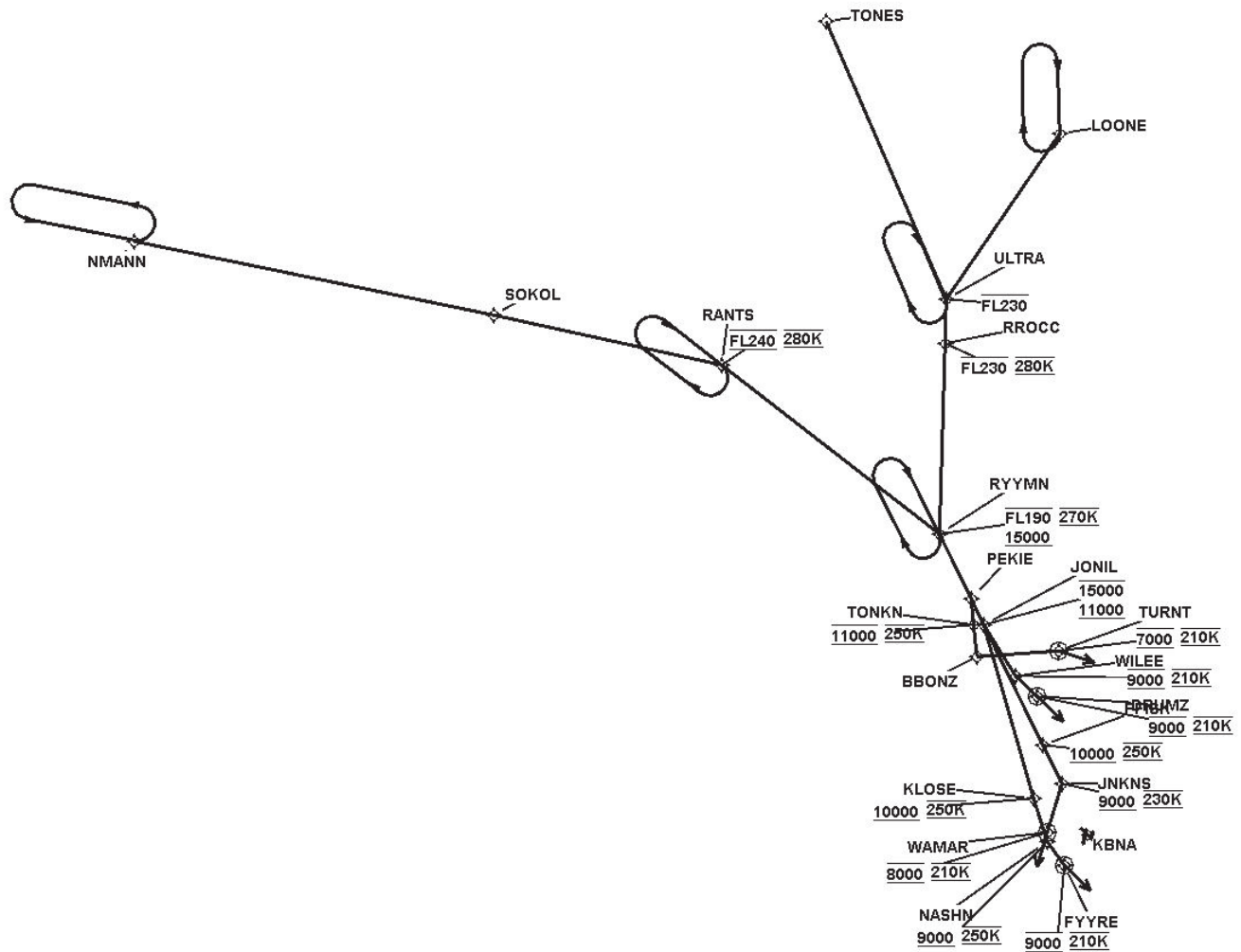


FEDERAL AVIATION ADMINISTRATION  
 FLIGHT STANDARDS SERVICE  
 STANDARD TERMINAL ARRIVAL (STAR)

Bearings, headings, courses, tracks and radials are magnetic. Elevations and altitudes are in feet, MSL. Altitudes are minimum altitudes unless otherwise indicated.  
 Ceilings are in feet above airport elevation. Distances are in nautical miles. Visibilities are in statute miles or feet RVR unless otherwise indicated.

Arrival Name	Number	STAR Computer Code	Superseded Number	Dated	Effective Date
RYYMN (RNAV)	FOUR	RYYMN.RYYMN4	THREE	10/02/2025	

Graphic Depiction 1

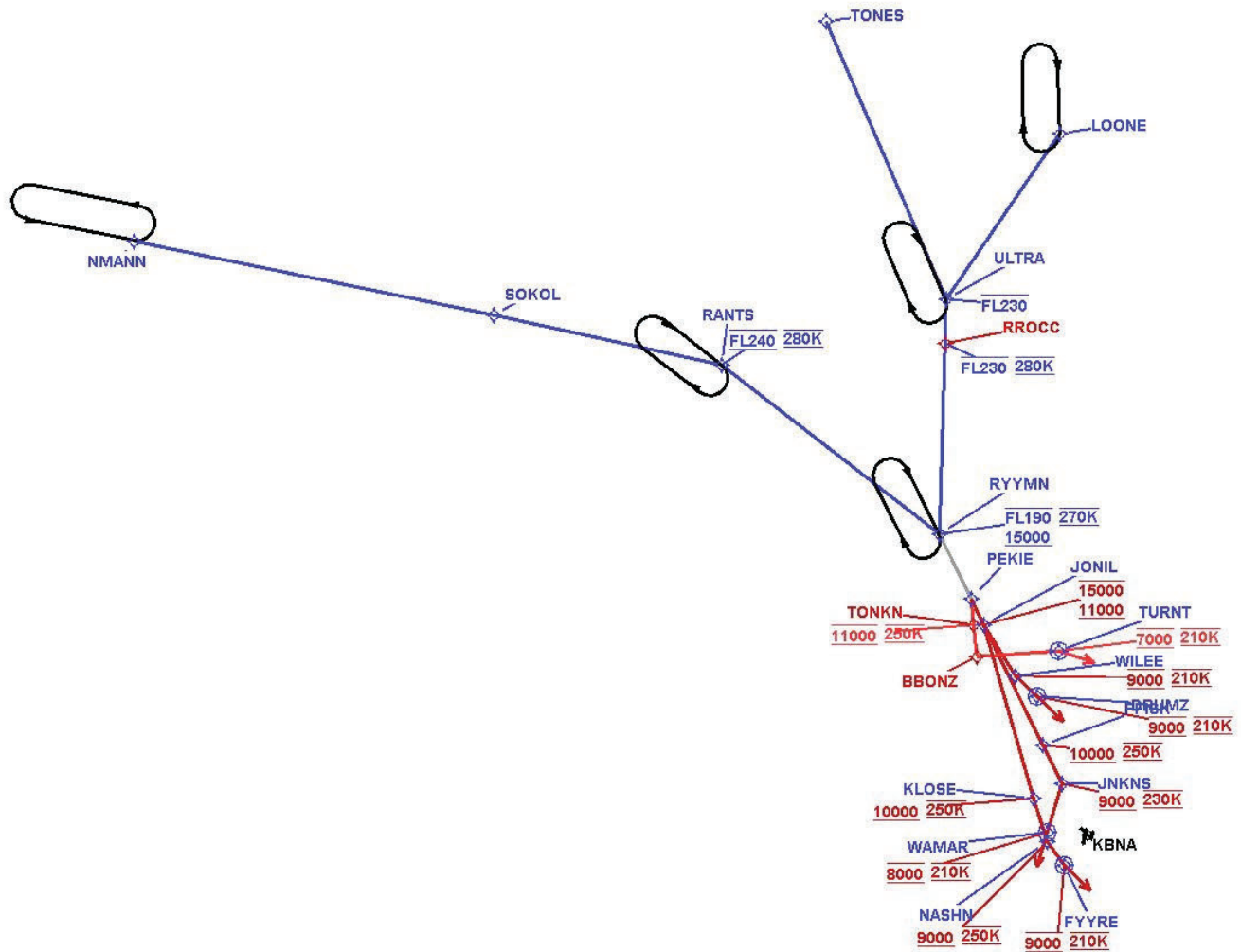


FEDERAL AVIATION ADMINISTRATION  
 FLIGHT STANDARDS SERVICE  
 STANDARD TERMINAL ARRIVAL (STAR)

Bearings, headings, courses, tracks and radials are magnetic. Elevations and altitudes are in feet, MSL. Altitudes are minimum altitudes unless otherwise indicated.  
 Ceilings are in feet above airport elevation. Distances are in nautical miles. Visibilities are in statute miles or feet RVR unless otherwise indicated.

Arrival Name	Number	STAR Computer Code	Superseded Number	Dated	Effective Date
RYYMN (RNAV)	FOUR	RYYMN.RYYMN4	THREE	10/02/2025	

Graphic Depiction 2

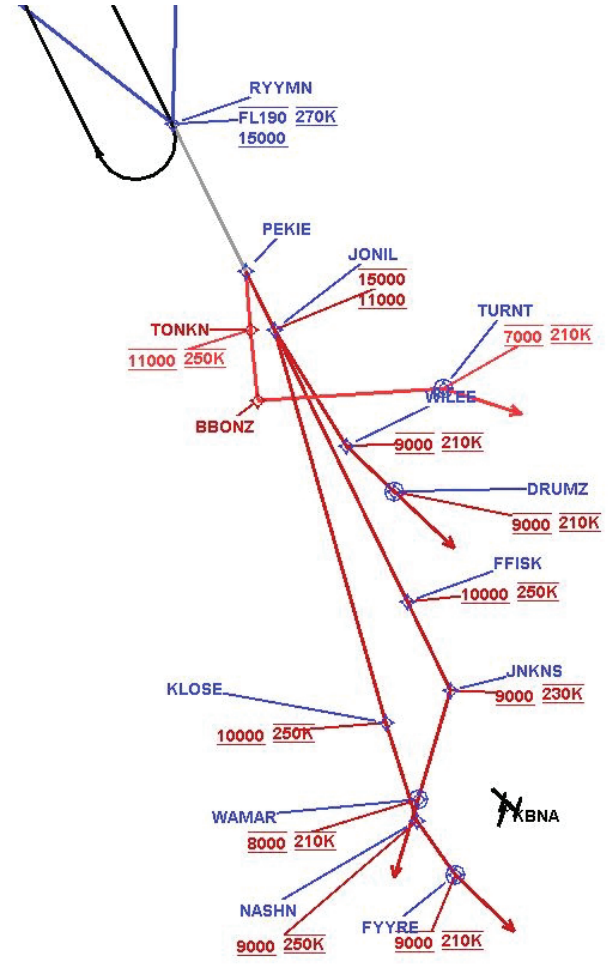


FEDERAL AVIATION ADMINISTRATION  
 FLIGHT STANDARDS SERVICE  
 STANDARD TERMINAL ARRIVAL (STAR)

Bearings, headings, courses, tracks and radials are magnetic. Elevations and altitudes are in feet, MSL. Altitudes are minimum altitudes unless otherwise indicated.  
 Ceilings are in feet above airport elevation. Distances are in nautical miles. Visibilities are in statute miles or feet RVR unless otherwise indicated.

Arrival Name	Number	STAR Computer Code	Superseded Number	Dated	Effective Date
RYYMN (RNAV)	FOUR	RYYMN.RYYMN4	THREE	10/02/2025	

Graphic Depiction 3



FEDERAL AVIATION ADMINISTRATION  
 FLIGHT STANDARDS SERVICE  
 STAR (DATA RECORD)

Arrival Name RYYMN (RNAV)	Number FOUR	STAR Computer Code RYYMN.RYYMN4		Superseded Number THREE		Dated 10/02/2025	Effective Date		
<u>FIX/NAVAID</u>	<u>LAT/LONG</u>	<u>C</u>	<u>FO/FB</u>	<u>LEG TYPE</u>	<u>TC</u>	<u>DIST (NM)</u>	<u>ALTITUDE</u>	<u>SPEED</u>	<u>REMARKS</u>
En Route Transition									
LOONE	374414.43N / 0864518.02W	Y		IF					LOONE.RYYMN4
ULTRA	372122.31N / 0870442.33W	Y	FB	TF	214.14	27.57	AT/BELOW FL230		
RROCC	371521.75N / 0870455.79W	Y	FB	TF	181.71	06.00	AT/BELOW FL230	AT 280K	
RYYMN	364904.12N / 0870554.29W	Y	FB	TF	181.71	26.27	15000BFL190	AT 270K	
En Route Transition									
NMANN	372928.40N / 0892328.88W	Y		IF					NMANN.RYYMN4
SOKOL	371911.45N / 0882203.92W	Y	FB	TF	101.54	50.00			
RANTS	371221.46N / 0874303.13W	Y	FB	TF	102.16	31.88	AT FL240	AT 280K	
RYYMN	364904.12N / 0870554.29W	Y	FB	TF	127.83	37.76	15000BFL190	AT 270K	
En Route Transition									
RANTS	371221.46N / 0874303.13W	Y		IF			AT FL240	AT 280K	RANTS.RYYMN4
RYYMN	364904.12N / 0870554.29W	Y	FB	TF	127.83	37.76	15000BFL190	AT 270K	
En Route Transition									
SOKOL	371911.45N / 0882203.92W	Y		IF					SOKOL.RYYMN4
RANTS	371221.46N / 0874303.13W	Y	FB	TF	102.16	31.88	AT FL240	AT 280K	
RYYMN	364904.12N / 0870554.29W	Y	FB	TF	127.83	37.76	15000BFL190	AT 270K	
En Route Transition									
TONES	375945.06N / 0872514.62W	Y		IF					TONES.RYYMN4
ULTRA	372122.31N / 0870442.33W	Y	FB	TF	156.85	41.66	AT/BELOW FL230		
RROCC	371521.75N / 0870455.79W	Y	FB	TF	181.71	06.00	AT/BELOW FL230	AT 280K	
RYYMN	364904.12N / 0870554.29W	Y	FB	TF	181.71	26.27	15000BFL190	AT 270K	



FEDERAL AVIATION ADMINISTRATION  
 FLIGHT STANDARDS SERVICE  
 STAR (DATA RECORD)

Arrival Name RYYMN (RNAV)	Number FOUR	STAR Computer Code RYYMN.RYYMN4					Superseded Number THREE	Dated 10/02/2025	Effective Date
FIX/NAVAID	LAT/LONG	C	FO/FB	LEG TYPE	TC	DIST (NM)	ALTITUDE	SPEED	REMARKS
En Route Transition									
ULTRA	372122.31N / 0870442.33W	Y		IF			AT/BELOW FL230		ULTRA.RYYMN4
RROCC	371521.75N / 0870455.79W	Y	FB	TF	181.71	06.00	AT/BELOW FL230	AT 280K	
RYYMN	364904.12N / 0870554.29W	Y	FB	TF	181.71	26.27	15000BFL190	AT 270K	
Common Route									
RYYMN	364904.12N / 0870554.29W	Y		IF			15000BFL190	AT 270K	RYYMN.RYYMN4
PEKIE	364005.25N / 0870024.19W	Y	FB	TF	153.73	10.00			
Runway Transition									
PEKIE	364005.25N / 0870024.19W	Y		IF					
JONIL	363629.63N / 0865812.51W	Y	FB	TF	153.78	04.00	11000B15000		
FFISK	361954.98N / 0864808.47W	Y	FB	TF	153.82	18.44	AT/ABOVE 10000	AT 250K	
JNKNS	361431.13N / 0864452.84W	Y	FB	TF	153.92	06.00	AT/ABOVE 9000	AT 230K	
WAMAR	360751.12N / 0864721.23W	Y	FO	TF	196.75	06.95	AT 8000	AT 210K	
KBNA:RWY 2L/C/R				FM	196.75				
Runway Transition									
PEKIE	364005.25N / 0870024.19W	Y		IF					
JONIL	363629.63N / 0865812.51W	Y	FB	TF	153.78	04.00	11000B15000		
WILEE	362923.62N / 0865246.01W	Y	FB	TF	148.24	08.34	AT 9000	AT 210K	
DRUMZ	362638.80N / 0864909.46W	Y	FO	TF	133.28	04.00	AT 9000	AT 210K	
KBNA:RWY 13				FM	133.28				
Runway Transition									
PEKIE	364005.25N / 0870024.19W	Y		IF					
TONKN	363629.27N / 0865959.20W	Y	FB	TF	174.67	03.61	AT 11000	AT 250K	
BBONZ	363208.84N / 0865929.12W	Y	FB	TF	174.68	04.35			

FEDERAL AVIATION ADMINISTRATION  
 FLIGHT STANDARDS SERVICE  
 STAR (DATA RECORD)

Arrival Name RYYMN (RNAV)	Number FOUR	STAR Computer Code RYYMN.RYYMN4		Superseded Number THREE		Dated 10/02/2025	Effective Date		
<u>FIX/NAVAID</u>	<u>LAT/LONG</u>	<u>C</u>	<u>FO/FB</u>	<u>LEG TYPE</u>	<u>TC</u>	<u>DIST (NM)</u>	<u>ALTITUDE</u>	<u>SPEED</u>	<u>REMARKS</u>
TURNT	363254.12N / 0864525.76W	Y	FO	TF	086.12	11.35	AT 7000	AT 210K	
KBNA:RWY 20L/C/R				FM	107.90				
Runway Transition									
PEKIE	364005.25N / 0870024.19W	Y		IF					
JONIL	363629.63N / 0865812.51W	Y	FB	TF	153.78	04.00	11000B15000		
KLOSE	361233.28N / 0864947.32W	Y	FB	TF	164.09	24.85	AT/ABOVE 10000	AT 250K	
NASHN	360632.34N / 0864726.63W	Y	FB	TF	162.45	06.30	AT/ABOVE 9000	AT 250K	
FYYRE	360316.13N / 0864434.22W	Y	FO	TF	144.49	04.01	AT 9000	AT 210K	
KBNA:RWY 31				FM	133.30				