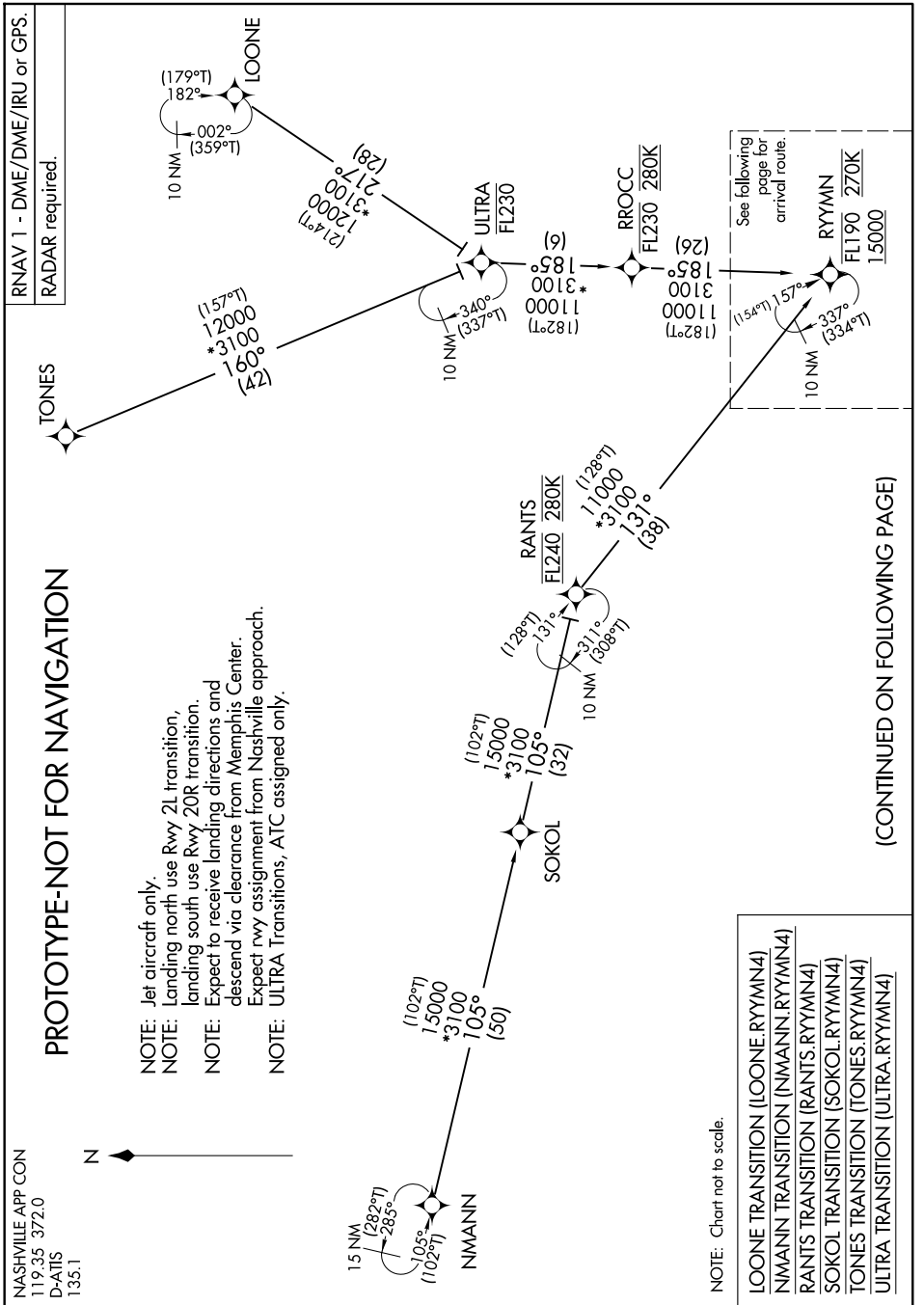


RYYMN FOUR ARRIVAL (RNAV) Transition Routes



RYYMN FOUR ARRIVAL (RNAV) Arrival Routes

NASHVILLE APP CON
119.35 372.0
D-ATIS
135.1

RNAV 1 - DME/DME/IRU or GPS.
RADAR required.

- NOTE: Jet aircraft only.
- NOTE: Landing north use Rwy 2L transition, landing south use Rwy 20R transition.
- NOTE: Expect to receive landing directions and descend via clearance from Memphis Center. Expect rwy assignment from Nashville approach.
- NOTE: ULTRA Transitions, ATC assigned only.

PROTOTYPE-NOT FOR NAVIGATION

ARRIVAL ROUTE DESCRIPTION

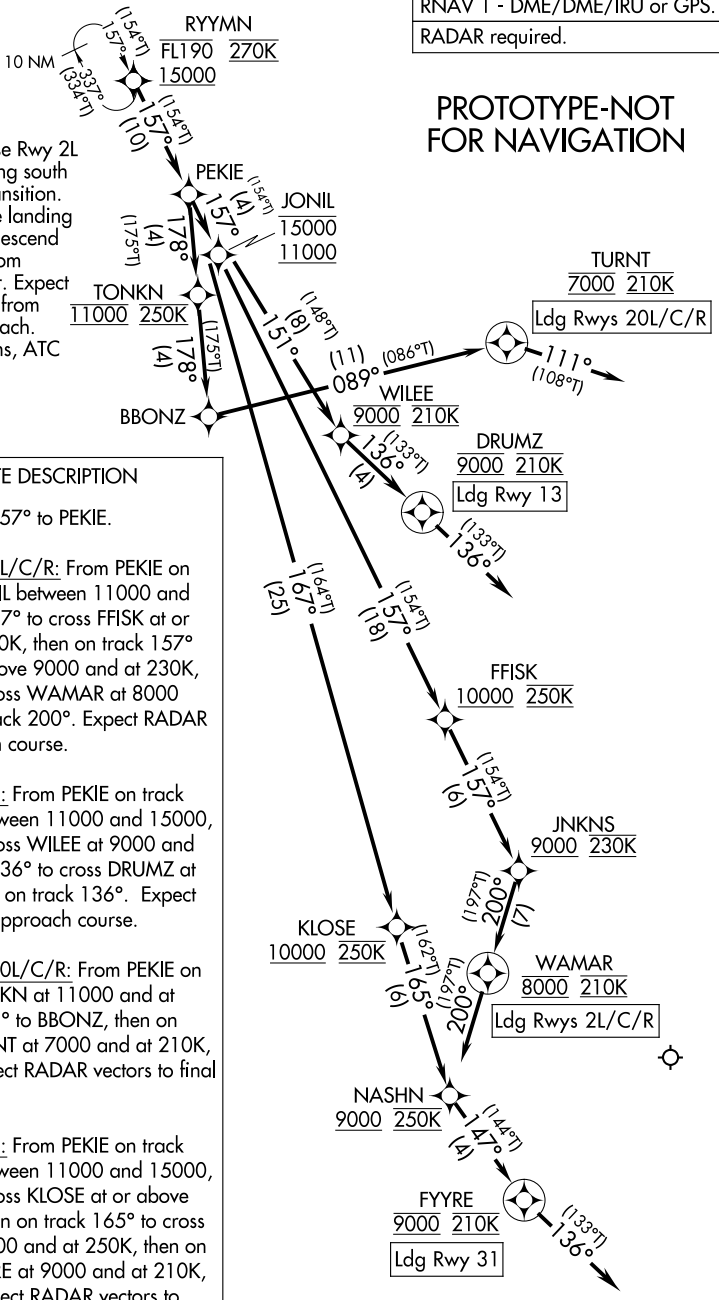
From RYYMN on track 157° to PEKIE.

LANDING RUNWAYS 2L/C/R: From PEKIE on track 157° to cross JONIL between 11000 and 15000, then on track 157° to cross FFISK at or above 10000 and at 250K, then on track 157° to cross JNKNS at or above 9000 and at 230K, then on track 200° to cross WAMAR at 8000 and at 210K, then on track 200°. Expect RADAR vectors to final approach course.

LANDING RUNWAY 13: From PEKIE on track 157° to cross JONIL between 11000 and 15000, then on track 151° to cross WILEE at 9000 and at 210K, then on track 136° to cross DRUMZ at 9000 and at 210K, then on track 136°. Expect RADAR vectors to final approach course.

LANDING RUNWAYS 20L/C/R: From PEKIE on track 178° to cross TONKN at 11000 and at 250K, then on track 178° to BBONZ, then on track 089° to cross TURNT at 7000 and at 210K, then on track 111°. Expect RADAR vectors to final approach course.

LANDING RUNWAY 31: From PEKIE on track 157° to cross JONIL between 11000 and 15000, then on track 167° to cross KLOSE at or above 10000 and at 250K, then on track 165° to cross NASHN at or above 9000 and at 250K, then on track 147° to cross FYYRE at 9000 and at 210K, then on track 136°. Expect RADAR vectors to final approach course.



NOTE: Chart not to scale.