

FEDERAL AVIATION ADMINISTRATION
 FLIGHT STANDARDS SERVICE
 STANDARD TERMINAL ARRIVAL (STAR)

Bearings, headings, courses, tracks and radials are magnetic. Elevations and altitudes are in feet, MSL. Altitudes are minimum altitudes unless otherwise indicated.
 Ceilings are in feet above airport elevation. Distances are in nautical miles. Visibilities are in statute miles or feet RVR unless otherwise indicated.

Arrival Name	Number	STAR Computer Code	Superseded Number	Dated	Effective Date
YAWNY (RNAV)	ONE	YAWNY.YAWNY1	NONE		

TRANSITION ROUTES:

Transition Name	Transition Computer Codes	From FIX/NAVAID	To FIX/NAVAID	Course	Distance	MEA	MOCA	MAA	Crossing Altitudes / Fixes
CVIAR	CVIAR.YAWNY1	CVIAR	CVIAR						
			YAWNY	076.21	35.01	9700	6900		AT/ABOVE 10000
DRYAD	DRYAD.YAWNY1	DRYAD	DRYAD						
			YAWNY	348.90	46.88	9700	9500		AT/ABOVE 10000
GWEET	GWEET.YAWNY1	GWEET	GWEET						
			YAWNY	292.14	22.87	9700	6900		AT/ABOVE 10000
PARZZ	PARZZ.YAWNY1	PARZZ	PARZZ						
			KMBIR	022.29	40.81	10900	10900		AT/ABOVE 11000
			YAWNY	013.98	53.35	9700	8900		AT/ABOVE 10000
SLTAN	SLTAN.YAWNY1	SLTAN	SLTAN						
			GWEET	299.44	35.77	9700	9700		
			YAWNY	292.14	22.87	9700	6900		AT/ABOVE 10000
VALYY	VALYY.YAWNY1	VALYY	VALYY						
			CAWSH	135.63	66.76	12000	11200		AT/ABOVE 17000
			CVIAR	115.53	30.00	12000	9100		
			YAWNY	076.21	35.01	9700	6900		AT/ABOVE 10000

ARRIVAL ROUTE DESCRIPTION:

LANDING RWY 31: FROM YAWNY ON TRACK 357.49/10.87 TO CROSS MENIN AT OR ABOVE 9000 AND AT OR BELOW 250 KIAS. EXPECT RNAV RWY 31 APPROACH.

PBN REQUIREMENT NOTES:

RNAV 1 - GPS

EQUIPMENT REQUIREMENT NOTES:

PROCEDURAL DATA NOTES:

NOTE: GPS ONLY.

FIXES AND/OR HOLDING PATTERNS:

CHART HOLDING AT PARZZ: HOLD S, RT, 018.00 INBOUND, 12 NM LEGS.

CHART HOLDING AT SLTAN: HOLD SE, RT, 299.44 INBOUND, 12 NM LEGS.

CHART HOLDING AT VALYY: HOLD NW, RT, 135.63 INBOUND, 12 NM LEGS.



FEDERAL AVIATION ADMINISTRATION
 FLIGHT STANDARDS SERVICE
 STANDARD TERMINAL ARRIVAL (STAR)

Bearings, headings, courses, tracks and radials are magnetic. Elevations and altitudes are in feet, MSL. Altitudes are minimum altitudes unless otherwise indicated.
 Ceilings are in feet above airport elevation. Distances are in nautical miles. Visibilities are in statute miles or feet RVR unless otherwise indicated.

Arrival Name	Number	STAR Computer Code	Superseded Number	Dated	Effective Date
YAWNY (RNAV)	ONE	YAWNY.YAWNY1	NONE		

COMMUNICATIONS:

CHART: SALT LAKE CITY CENTER, TWR, GND CON.

AIRPORTS SERVED:

AIRPORT ID	CITY	STATE
SUN	HAILEY	ID

LOST COMMUNICATIONS PREFERENCES:

AFTER MENIN, CONDUCT RNAV (GPS) X RWY 31 OR RNAV (GPS) Y RWY 31 APPROACH.

REMARKS:

RNAV (GPS) X RWY 31 MISSED APPROACH REQUIRES CLIMB GRADIENT OF 420 FT/NM TO 9500; SOME LANDING MINIMA ON RNAV (GPS) Y RWY 31 MISSED APPROACH REQUIRES CLIMB GRADIENT OF 410 FT/NM TO 7600; BOTH IAP'S HAVE A 185 SPEED RESTRICTION IN MISSED APPROACH.

DO NOT DEPICT LOST COMM TRACK IN PLAN VIEW (ONLY TEXTUAL).

CHARTING: DO NOT PUBLISH MOCA VALUES THAT ARE WITHIN 500 FT OF MEA.

ADDITIONAL FLIGHT DATA:

DME/DME ASSESSMENT: UNSAT.

MAG VAR: SUN 13E/2020

CHART AT MENIN TERMINUS: SUN LDG RWY 31.

FLIGHT INSPECTED BY:

ORGANIZATION: **DATE:**

Flight Inspected Signature:

Digitally signed by
ROBERT G HAMILTON

Jan 29, 2025

DEVELOPED BY:

BRYANT M SMITH

AJV-A431

09/10/2024

Developed By Signature:

BRYANT
MICHAEL SMITH
Digitally signed by BRYANT
 MICHAEL SMITH
 Date: 2024.10.17 09:33:27
 -04'00'

APPROVED BY:

JOHN BORDY

AJV-A33

Approved By Signature:

Digitally signed by
ROBERT G HAMILTON

Jan 29, 2025

CHANGES:

REASONS:

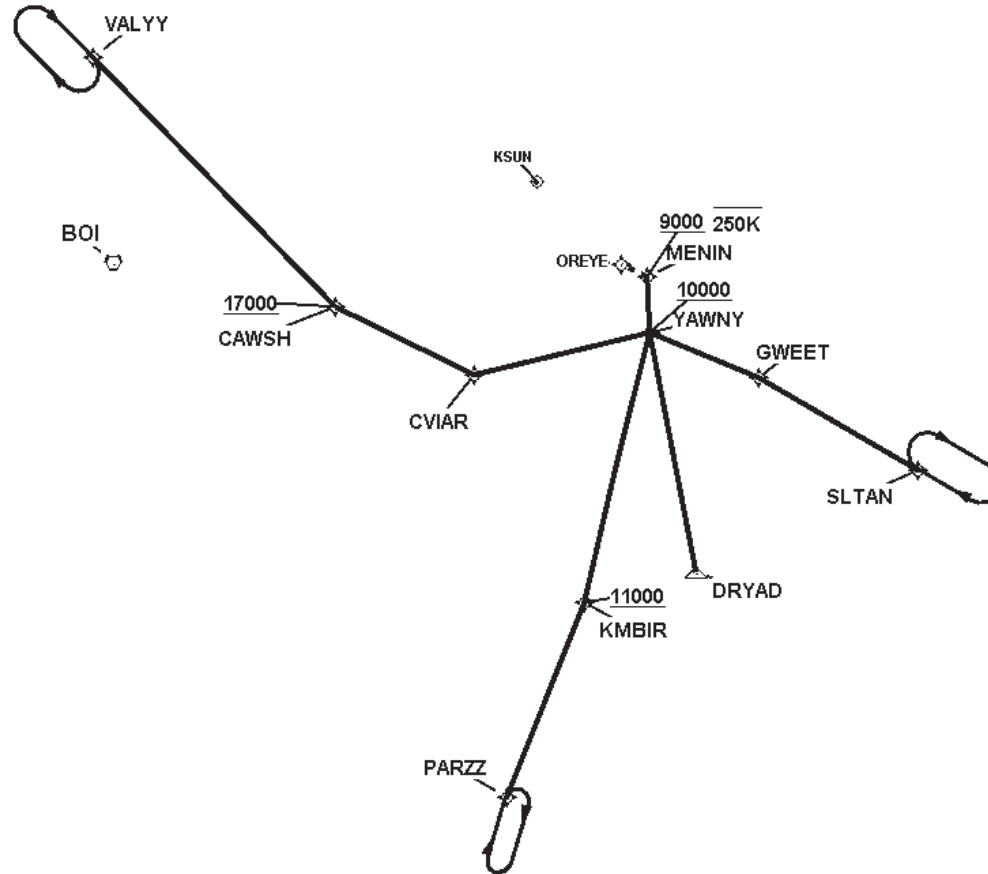


FEDERAL AVIATION ADMINISTRATION
 FLIGHT STANDARDS SERVICE
 STANDARD TERMINAL ARRIVAL (STAR)

Bearings, headings, courses, tracks and radials are magnetic. Elevations and altitudes are in feet, MSL. Altitudes are minimum altitudes unless otherwise indicated.
 Ceilings are in feet above airport elevation. Distances are in nautical miles. Visibilities are in statute miles or feet RVR unless otherwise indicated.

Arrival Name	Number	STAR Computer Code	Superseded Number	Dated	Effective Date
YAWNY (RNAV)	ONE	YAWNY.YAWNY1	NONE		

Graphic Depiction 1



FEDERAL AVIATION ADMINISTRATION
 FLIGHT STANDARDS SERVICE
 STAR (DATA RECORD)

Arrival Name YAWNY (RNAV)	Number ONE	STAR Computer Code YAWNY.YAWNY1		Superseded Number NONE	Dated	Effective Date			
<u>FIX/NAVAID</u>	<u>LAT/LONG</u>	<u>C</u>	<u>FO/FB</u>	<u>LEG TYPE</u>	<u>TC</u>	<u>DIST (NM)</u>	<u>ALTITUDE</u>	<u>SPEED</u>	<u>REMARKS</u>
En Route Transition									
CVIAR	425639.40N / 1144509.66W	Y		IF					CVIAR.YAWNY1
YAWNY	425658.62N / 1135730.04W	Y	FB	TF	089.21	35.01	AT/ABOVE 10000		
En Route Transition									
DRYAD	421006.39N / 1135937.06W	Y		IF					DRYAD.YAWNY1
YAWNY	425658.62N / 1135730.04W	Y	FB	TF	001.90	46.88	AT/ABOVE 10000		
En Route Transition									
GWEET	424351.37N / 1133202.19W	Y		IF					GWEET.YAWNY1
YAWNY	425658.62N / 1135730.04W	Y	FB	TF	305.14	22.87	AT/ABOVE 10000		
En Route Transition									
PARZZ	413614.64N / 1150209.69W	Y		IF					PARZZ.YAWNY1
KMBIR	420929.77N / 1143027.67W	Y	FB	TF	035.29	40.81	AT/ABOVE 11000		
YAWNY	425658.62N / 1135730.04W	Y	FB	TF	026.98	53.35	AT/ABOVE 10000		
En Route Transition									
SLTAN	421948.11N / 1125612.76W	Y		IF					SLTAN.YAWNY1
GWEET	424351.37N / 1133202.19W	Y	FB	TF	312.44	35.77			
YAWNY	425658.62N / 1135730.04W	Y	FB	TF	305.14	22.87	AT/ABOVE 10000		
En Route Transition									
VALYY	441235.53N / 1160440.30W	Y		IF					VALYY.YAWNY1
CAWSH	431525.31N / 1151706.93W	Y	FB	TF	148.63	66.76	AT/ABOVE 17000		
CVIAR	425639.40N / 1144509.66W	Y	FB	TF	128.53	30.00			
YAWNY	425658.62N / 1135730.04W	Y	FB	TF	089.21	35.01	AT/ABOVE 10000		



FEDERAL AVIATION ADMINISTRATION
 FLIGHT STANDARDS SERVICE
 STAR (DATA RECORD)

Arrival Name		Number	STAR Computer Code		Superseded Number	Dated	Effective Date		
YAWNY (RNAV)		ONE	YAWNY.YAWNY1		NONE				
<u>FIX/NAVAID</u>	<u>LAT/LONG</u>	<u>C</u>	<u>FO/FB</u>	<u>LEG TYPE</u>	<u>TC</u>	<u>DIST (NM)</u>	<u>ALTITUDE</u>	<u>SPEED</u>	<u>REMARKS</u>
Runway Transition									
YAWNY	425658.62N / 1135730.04W	Y		IF			AT/ABOVE 10000		
MENIN	430740.12N / 1135447.85W	Y	FB	TF	010.49	10.87	AT/ABOVE 9000	AT/BELOW 250K	
KSUN:RWY 31									

