

Flight Procedures Cover Page	Task Action: P-NOTAM	Task Type: IAP	Estimated Chart Date: 05/14/2026	APWS Task ID: 478E5672AAB14B35AFAF747A87A30D5F	APWS Project ID: 20A09FF1F17447BBB1F7D1CC3AFBFA2F
Procedure: ILS OR LOC RWY 13 AMDT 3B		Enroute: NO	Specialist: Heiderstadt, Nicholas		Agreement Number:
Airport ID: KSUX			Airport City: SIOUX CITY		State: IA
Facility ID:	Facility Type:	Flight Inspection Remark Type:			

Procedure Comments:
P-NOTAM TO UPDATE ALTERNATE MINS
PROCESSED IAW TECHNICAL SUPPORT GROUP (AJF-17) MEMO DATED 07/07/2021, SUBJECT: GUIDANCE FOR PROCEDURAL CHANGES REQUIRING FLIGHT INSPECTION/VALIDATION
CONTACT ROBERT HAMILTON 405-954-4608

QUALITY
20
CHECKED

QUALITY
41
CHECKED

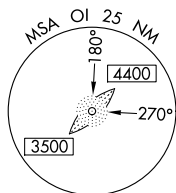
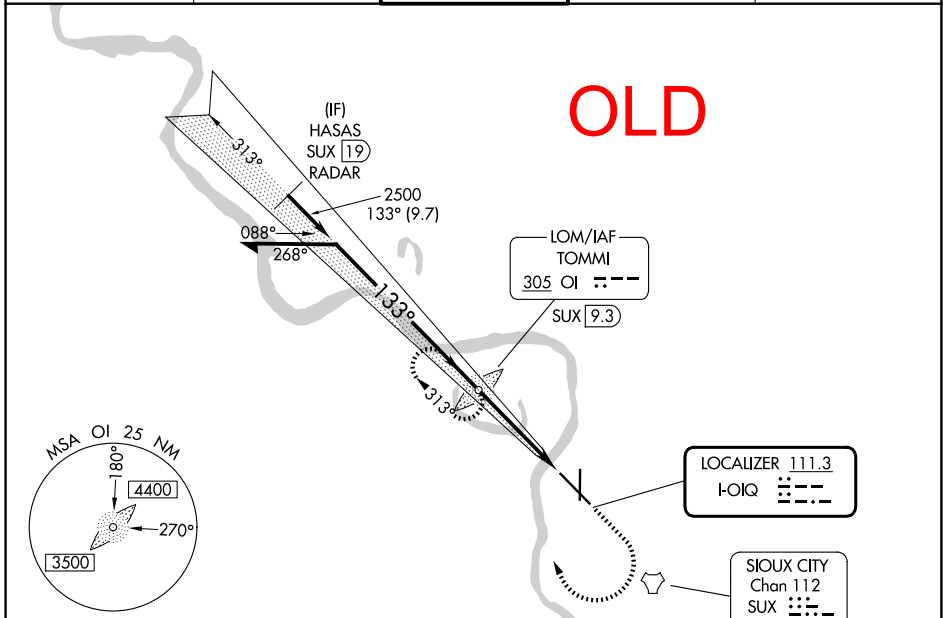
LOC I- <u>OIQ</u>	APP CRS	Rwy Ldg	9002
111.3	133°	TDZE	1095
		Apt Elev	1098

ILS or LOC RWY 13

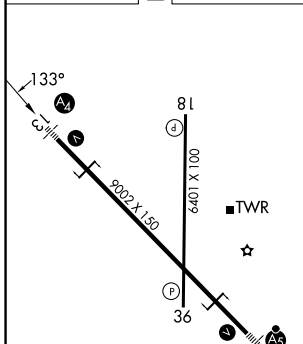
SIoux GATEWAY/BRIG GENERAL BUD DAY FLD (SUX)

ADF required. ADF or RADAR required for procedure entry.		MALS	MISSED APPROACH: Climb to 2000 then climbing right turn to 3100 direct TOMMI LOM/SUX 9.3 DME and hold, continue climb-in-hold to 3100	
<p>⚠ For inop ALS, increase S-LOC 13 Cat E visibility to 1½ SM. Inop table does not apply to S-ILS 13.</p>				

ATIS	SIoux CITY APP CON*	SIoux CITY TOWER*	GND CON	UNICOM
119.45 270.8	124.6 307.0	118.7 (CTAF) 0 254.3	121.9 348.6	122.95



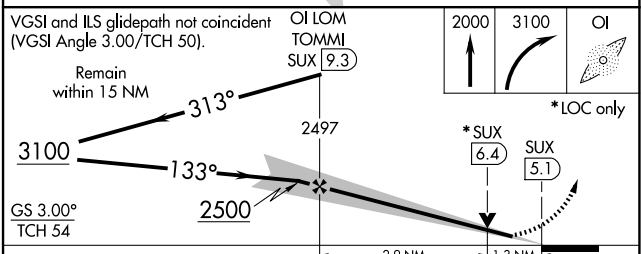
ELEV 1098	D	TDZE 1095
-----------	----------	-----------



REIL Rwy 18 **0**
 HIRL Rwy 13-31 **0**
 MIRL Rwy 18-36 **0**

FAF to MAP 4.2 NM

Knots	60	90	120	150	180
Min:Sec	4:12	2:48	2:06	1:41	1:24



CATEGORY	A	B	C	D	E
S-ILS 13	1295/40 200 (200-¾)				
S-LOC 13	1560/40	465 (500-¾)	1560/60 465 (500-1¼)		
CIRCLING	1640-1 542 (600-1)	1700-1 602 (700-1)	1700-1¾ 602 (700-1¾)	1860-2½ 762 (800-2½)	1940-3 842 (900-3)

SIoux CITY, IOWA
 Amdt 3A 11AUG22

SIoux GATEWAY/BRIG GENERAL BUD DAY FLD (SUX)
 42°24'N-96°23'W

ILS or LOC RWY 13

NC-3, 02 OCT 2025 to 30 OCT 2025

NC-3, 02 OCT 2025 to 30 OCT 2025

NAME ALTERNATE MINIMUMS

ST CHARLES, MO

ST CHARLES COUNTY RGNL/
SMARTT FLD (SET)..... **RNAV (GPS) Rwy 18**
VOR Rwy 18

NA when local weather not available.
Category C, 800-2¼.

ST JOSEPH, MO

ROSECRANS
MEML (STJ)..... **ILS or LOC Rwy 35¹²**
LOC BC Rwy 17¹³
RNAV (GPS) Rwy 13⁴⁵
RNAV (GPS) Rwy 17⁴⁶
RNAV (GPS) Rwy 31³⁴
RNAV (GPS) Rwy 35⁴⁶
VOR or TACAN Rwy 17⁶
VOR or TACAN Rwy 35⁶

¹NA when control tower closed.
²LOC, Category C, 800-2¼; Category D, 900-2¾;
Category E, 1000-3.
³Category C, 800-2¼; Category D, 900-2¾.
⁴NA when local weather not available.
⁵Category C, 800-2¼; Category D, 900-2¾.
⁶Category C, 800-2¼; Category D, 900-2¾;
Category E, 1000-3.

ST LOUIS, MO

SPIRIT OF
ST LOUIS (SUS)..... **ILS or LOC Rwy 8R¹**
ILS or LOC Rwy 26L²³⁴
RNAV (GPS) Rwy 8L²
RNAV (GPS) Rwy 8R⁵
RNAV (GPS) Rwy 26L²⁵
RNAV (GPS) Rwy 26R²

¹ILS, LOC, Category D, 900-3.
²NA when local weather not available.
³NA when control tower closed.
⁴LOC, Category D, 900-3.
⁵Category D, 900-3.

SEDALIA, MO

SEDALIA
RGNL (DMO)..... **RNAV (GPS) Rwy 18**
RNAV (GPS) Rwy 36

NA when local weather not available.
Category D, 800-2¼.

SHELDON, IA

SHELDON
RGNL (SHL)..... **RNAV (GPS) Rwy 15**
RNAV (GPS) Rwy 33

NA when local weather not available.

SHENANDOAH, IA

SHENANDOAH
MUNI (SDA)..... **RNAV (GPS) Rwy 4**
VOR/DME Rwy 12

NA when local weather not available.

NAME ALTERNATE MINIMUMS

SIOUX CITY, IA

SIOUX GATEWAY/BRIG GENERAL BUD
DAY FLD (SUX)..... **ILS or LOC Rwy 13¹²**
ILS or LOC Rwy 31¹³
RNAV (GPS) Rwy 13⁴
RNAV (GPS) Rwy 18⁵
RNAV (GPS) Rwy 31⁴
RNAV (GPS) Rwy 36⁵

NA when local weather not available.
¹NA when control tower closed.
²LOC, Category D, 800-2¼; Category E, 900-3.
³LOC, Category D, 800-2¼; Category E, 900-3.
⁴Category D, 800-2¼; Category E, 1000-3.
⁵Category D, 800-2¼.

SPENCER, IA

SPENCER
MUNI (SPW)..... **RNAV (GPS) Rwy 12¹**
RNAV (GPS) Rwy 18
RNAV (GPS) Rwy 30¹
RNAV (GPS) Rwy 36
VOR Rwy 30¹

NA when local weather not available.
¹Category C, 800-2¼, Category D, 800-2¼.

SPRINGFIELD, MO

SPRINGFIELD-BRANSON
NTL (SGF)..... **ILS or LOC Rwy 2¹**
ILS or LOC Rwy 14²
RNAV (GPS) Rwy 2³
RNAV (GPS) Rwy 20³
RNAV (GPS) Rwy 32³
VOR/DME or TACAN Rwy 2⁴

¹ILS, Category D, 700-2, Category E, 900-3. LOC,
Category E, 900-3.
²ILS, Category D, 700-2.
³NA when local weather not available.
⁴Category E, 800-2¼.

STORM LAKE, IA

STORM LAKE
MUNI (SLB)..... **RNAV (GPS) Rwy 17**

NA when local weather not available.

VINTON, IA

VINTON VETERANS MEML
AIRPARK (VTI)..... **RNAV (GPS) Rwy 9**
RNAV (GPS) Rwy 27

NA when local weather not available.

WARRENSBURG, MO

SKYHAVEN (RCM)..... **RNAV (GPS) Rwy 1**
RNAV (GPS) Rwy 19

NA when local weather not available.

02 OCT 2025 to 30 OCT 2025

02 OCT 2025 to 30 OCT 2025