

Flight Procedures Cover Page	Task Action: FLIGHT CHECK	Task Type: IAP	Estimated Chart Date: 05/14/2026	APWS Task ID: 485601EF96FD4CCF9FAFCDA2368FAE5C	APWS Project ID: A2AC5D646B30401EA8B21B7B72EBB60F
Procedure: RNAV (GPS) RWY 11 AMDT 1		Enroute: NO	Specialist: Smith, Rodney		Agreement Number:
Airport ID: 1H2			Airport City: EFFINGHAM		State: IL
Facility ID:	Facility Type:	Flight Inspection Remark Type: Hold FC Slot			

Procedure Comments:
PENDING AIRPORT DATA USED.

CANCELS NOTAM 6/0850.
CRC REMAINDER CHANGED FROM D7E4CD01 TO 0F7BE8F3 (SEE 8260-3 FOR SPECIFICS)

03/03/26: THIS IS A CORRECTED COPY OF THE FORM APPROVED ON 02/09/26.
1. CHANGED FIX DUDLY FROM "IAF" TO "IF/IAF" IN COURSE REVERSAL.

03/26/26: THIS IS A CORRECTED COPY OF THE FORM APPROVED ON 03/03/26.
1. ADDED FIX TYPE "IF/IAF" TO DUDLY IN TERMINAL ROUTE DUDLY TO FIBGO.
2. CHANGED FIX DUDLY FROM "IF/IAF" TO "IAF" IN COURSE REVERSAL.

POC: KYLE THOMPSON 405-954-2135



WAAS CH 99439 W11A	APP CRS 114°	Rwy Idg 6002 TDZE 585 APT Elev 585
--------------------------	------------------------	---

RNAV (GPS) RWY 11

EFFINGHAM COUNTY RGNL (K1H2)

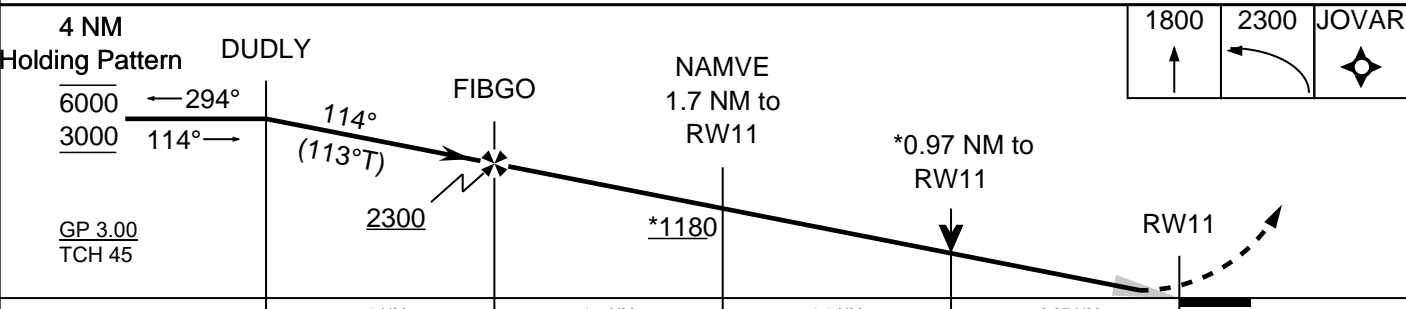
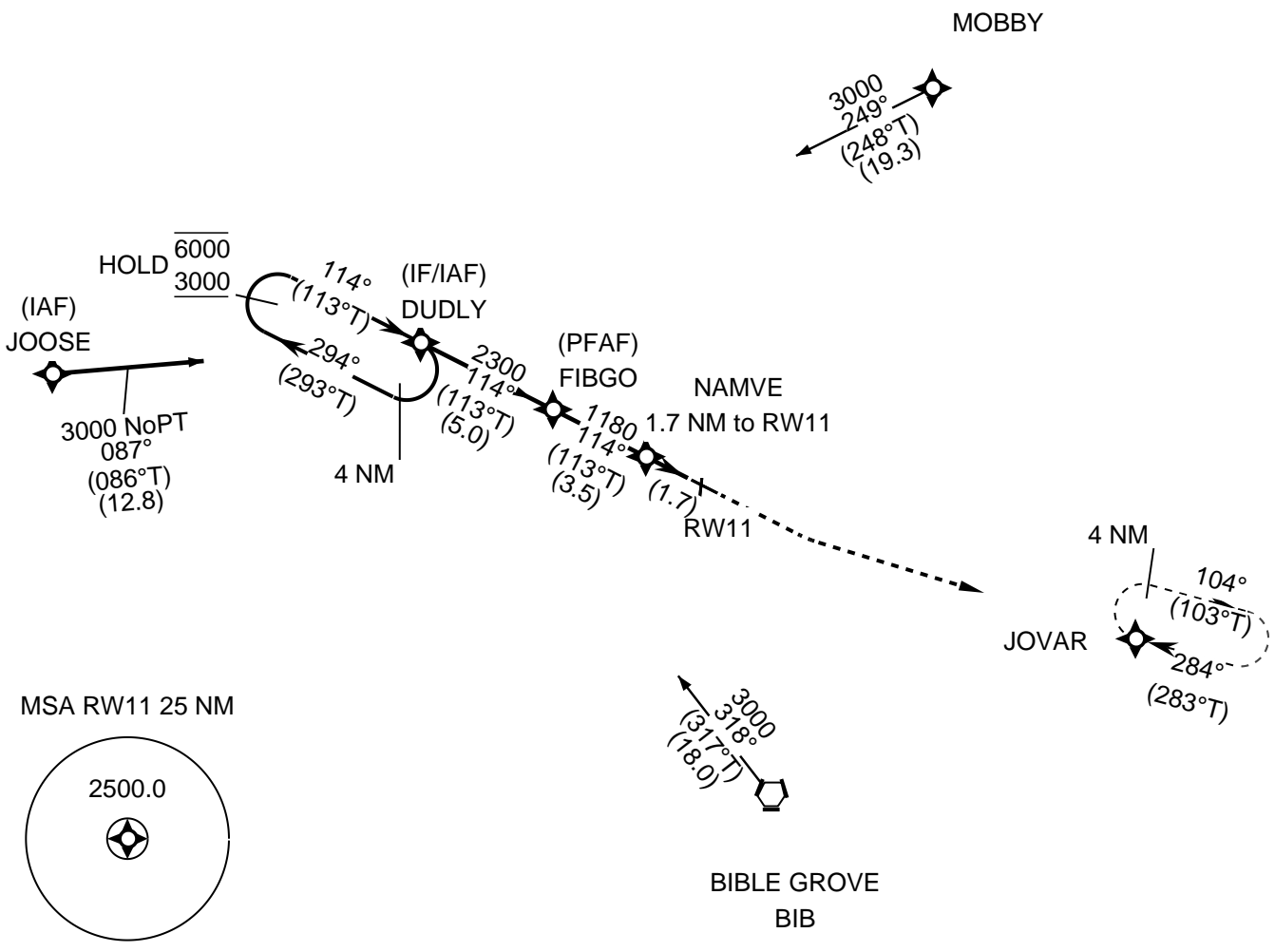
RNP APCH - GPS.

FOR UNCOMPENSATED BARO-VNAV SYSTEMS, LNAV/VNAV NA BELOW -16°C OR ABOVE 54°C. CIRCLING RWY 1,19 NA AT NIGHT. PROCEDURE NA FOR ARRIVALS AT BIB VORTAC ON V12 EASTBOUND.

MISSED APPROACH: CLIMB TO 1800 THEN CLIMBING LEFT TURN TO 2300 DIRECT JOVAR AND HOLD.

AWOS-3PT **118.375** KANSAS CITY CENTER **124.3 269.15** UNICOM **122.725 (CTAF)**

PROTOTYPE-NOT FOR NAVIGATION



CATEGORY	A	B	C	D
LPV			835-1 250 (300-1)	
LNAV/VNAV			940-1 355 (400-1)	
LNAV			940-1 355 (400-1)	
CIRCLING	1020-1 435 (500-1)	1140-1 555 (600-1)	1440-2 1/2 855 (900-2 1/2)	1440-2 3/4 855 (900-2 3/4)

WAAS CH 99439 W11A	APP CRS 114°	Rwy Idg 5103 TDZE 585 Apt Elev 585
--	------------------------	---

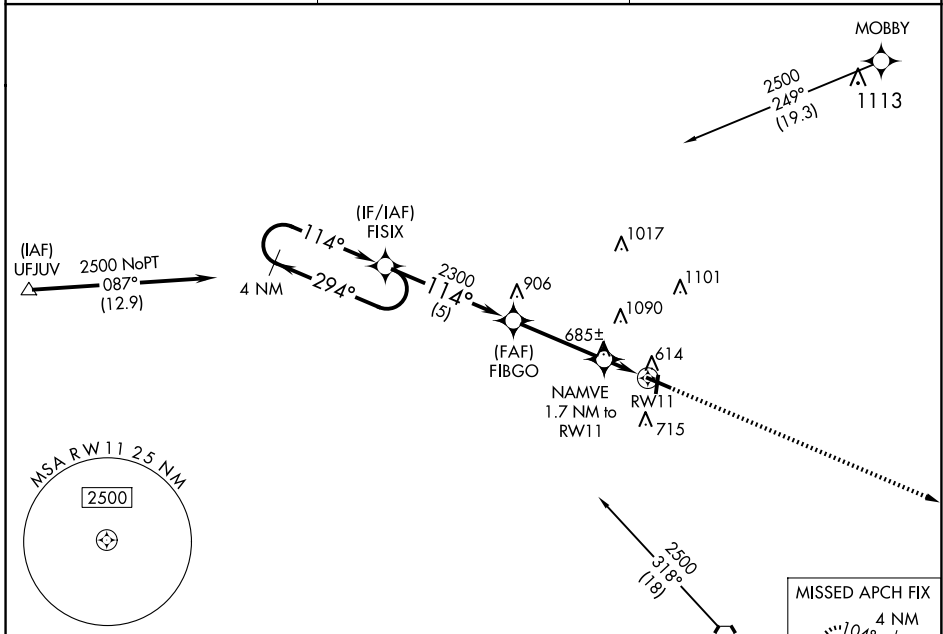
OLD

RNAV (GPS) RWY 11

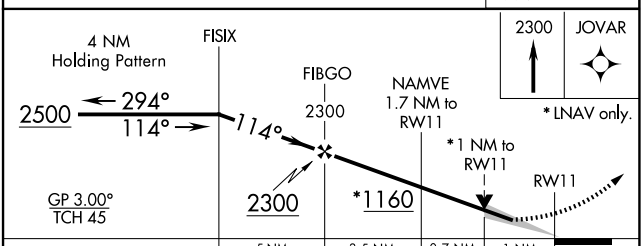
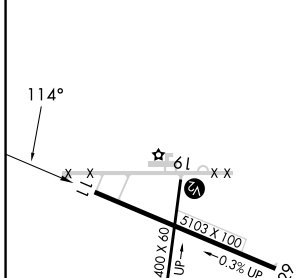
EFFINGHAM COUNTY RGNL (1H2)

RNP APCH.	For uncompensated Baro-VNAV systems, LNAV/VNAV NA below -16°C or above 54°C. Straight-in Rwy 1 NA at night, Circling Rwy 1, 19 NA at night.	MISSED APPROACH: Climb to 2300 direct JOVAR and hold.
-----------	---	---

AWOS-3PT 118.375	KANSAS CITY CENTER 124.3 269.15	UNICOM 122.725 (CTAF) 0
----------------------------	---	--



ELEV 585	TDZE 585
----------	----------



CATEGORY	A	B	C	D
LPV DA		835-1	250 (300-1)	
LNAV/VNAV DA		856-1	271 (300-1)	
LNAV MDA		940-1	355 (400-1)	
C CIRCLING	1020-1 435 (500-1)	1140-1 555 (600-1)	1440-2½ 855 (900-2½)	1440-2¾ 855 (900-2¾)

REIL Rwy 11 and 29 **0**
MIRL Rwy 1-19 and 11-29 **0**

EC-3, 30 OCT 2025 to 27 NOV 2025

EC-3, 30 OCT 2025 to 27 NOV 2025