

FEDERAL AVIATION ADMINISTRATION
FLIGHT STANDARDS SERVICE
STANDARD TERMINAL ARRIVAL (STAR)

Bearings, headings, courses, tracks and radials are magnetic. Elevations and altitudes are in feet, MSL. Altitudes are minimum altitudes unless otherwise indicated.
Ceilings are in feet above airport elevation. Distances are in nautical miles. Visibilities are in statute miles or feet RVR unless otherwise indicated.

Arrival Name SWFFT (RNAV)	Number THREE	STAR Computer Code SWFFT.SWFFT3	Superseded Number TWO	Dated 07/24/2014	Effective Date				
TRANSITION ROUTES:									
Transition Name	Transition Computer Codes	From FIX/NAVAID	To FIX/NAVAID	Course	Distance	MEA	MOCA	MAA	Crossing Altitudes / Fixes
EDDDY	EDDDY.SWFFT3	EDDDY	EDDDY						
			BAMMA	261.68	64.99	15000	5300		AT FL200
			SWFFT	260.39	35.71	11000	4600		BETWEEN 15000 AND FL190
JAGIR	JAGIR.SWFFT3	JAGIR	JAGIR						
			LENSE	330.49	36.19	15000	4600		BETWEEN FL240 AND FL280
			SWFFT	316.77	34.14	11000	4600		BETWEEN 15000 AND FL190
RKMRT	RKMRT.SWFFT3	RKMRT	RKMRT						
			JAGIR	021.51	37.30	16000	4600		
			LENSE	330.49	36.19	15000	4600		BETWEEN FL240 AND FL280
			SWFFT	316.77	34.14	11000	4600		BETWEEN 15000 AND FL190
THRSR	THRSR.SWFFT3	THRSR	THRSR						
			WESSN	341.70	22.15	16000	4600		
			JAGIR	336.14	45.49	16000	4600		
			LENSE	330.49	36.19	15000	4600		BETWEEN FL240 AND FL280
			SWFFT	316.77	34.14	11000	4600		BETWEEN 15000 AND FL190

ARRIVAL ROUTE DESCRIPTION:

FROM SWFFT ON TRACK 315.49/10.00 TO CROSS HIMAT AT OR ABOVE 12000, THEN ON TRACK 315.44/4.00 TO WEMAL.

LANDING RWY 2L/C/R: FROM WEMAL ON TRACK 271.16/20.92 TO CROSS AMAND AT 6000 AND AT 210 KIAS, THEN ON TRACK 290.80. EXPECT RADAR VECTORS TO FINAL APPROACH COURSE.

LANDING RWY 13: FROM WEMAL ON TRACK 305.73/24.35 TO CROSS BRITY AT OR ABOVE 10000 AND AT 250 KIAS, THEN ON TRACK 305.49/6.37 TO CROSS BCHRD AT 9000 AND AT 250 KIAS, THEN ON TRACK 315.66/6.41 TO CROSS MEANN AT 9000 AND AT 210 KIAS, THEN ON TRACK 315.66. EXPECT RADAR VECTORS TO FINAL APPROACH COURSE.

LANDING RWY 20L/C/R: FROM WEMAL ON TRACK 309.42/23.23 TO CROSS RYAAN AT OR ABOVE 10000 AND AT 250 KIAS, THEN ON TRACK 309.20/6.00 TO CROSS DEENN AT OR ABOVE 9000 AND AT 230 KIAS, THEN ON TRACK 021.00/6.44 TO CROSS SIPPO AT 8000 AND AT 210 KIAS, THEN ON TRACK 021.00. EXPECT RADAR VECTORS TO FINAL APPROACH COURSE.

LANDING RWY 31: FROM WEMAL ON TRACK 315.41/4.00 TO CROSS PFOWL AT OR ABOVE 10000 AND AT 250 KIAS, THEN ON TRACK 020.04/10.83 TO CROSS HOTTE AT 8000 AND AT 230 KIAS, THEN ON TRACK 316.26/9.17 TO CROSS CHKKN AT 8000 AND AT 210 KIAS, THEN ON TRACK 316.26. EXPECT RADAR VECTORS TO FINAL APPROACH COURSE.

PBN REQUIREMENT NOTES:

RNAV 1 - DME/DME/IRU OR GPS

EQUIPMENT REQUIREMENT NOTES:

RADAR REQUIRED

FEDERAL AVIATION ADMINISTRATION
FLIGHT STANDARDS SERVICE
STANDARD TERMINAL ARRIVAL (STAR)

Bearings, headings, courses, tracks and radials are magnetic. Elevations and altitudes are in feet, MSL. Altitudes are minimum altitudes unless otherwise indicated.
Ceilings are in feet above airport elevation. Distances are in nautical miles. Visibilities are in statute miles or feet RVR unless otherwise indicated.

Arrival Name	Number	STAR Computer Code	Superseded Number	Dated	Effective Date
SWFFT (RNAV)	THREE	SWFFT.SWFFT3	TWO	07/24/2014	

PROCEDURAL DATA NOTES:

NOTE: JET AIRCRAFT ONLY

NOTE: JAGIR TRANSITION FOR USE BY ATLANTA AREA DEPARTURES ONLY.

NOTE: LANDING NORTH USE RWY 2R TRANSITION, LANDING SOUTH USE RWY 20L TRANSITION.

NOTE: EXPECT TO RECEIVE LANDING DIRECTION AND DESCEND VIA CLEARANCE FROM MEMPHIS CENTER. EXPECT RWY ASSIGNMENT FROM NASHVILLE APPROACH.

FIXES AND/OR HOLDING PATTERNS:

CHART HOLDING AT BAMMA: HOLD E, LT, 260.39 INBOUND, 10 NM LEGS.

CHART HOLDING AT SWFFT: HOLD SE, RT, 315.49 INBOUND, 10 NM LEGS.

COMMUNICATIONS:

AIRPORTS SERVED:

<u>AIRPORT ID</u>	<u>CITY</u>	<u>STATE</u>
BNA	NASHVILLE	TN

LOST COMMUNICATIONS PREFERENCES:

REMARKS:

ENVIRONMENTAL REVIEW UNDER ORDER 1050.1 (LATEST EDITION) AND THE NOISE SCREENING HAVE BEEN ACCOMPLISHED.

ADDITIONAL FLIGHT DATA:

DME/DME ASSESSMENT: SAT (RNP 2.0)

MAG VAR: BNA 03W/2010

CHART AT SIPPO TERMINUS: BNA LDG RWY 20L/C/R

CHART AT MEANN TERMINUS: BNA LDG RWY 13

CHART AT CHKKN TERMINUS: BNA LDG RWY 31

CHART AT AMAND TERMINUS: BNA LDG RWY 2L/C/R

FLIGHT INSPECTED BY:

ORGANIZATION: **DATE:**

Flight Inspected Signature: _____

DEVELOPED BY:

JOEY TINSLEY, ESC OSG PBN CO-LEAD

NATCA

09/30/2024

Developed By Signature: _____

APPROVED BY:

BEV BORDY

AJV-A420

Approved By Signature: _____

FEDERAL AVIATION ADMINISTRATION
FLIGHT STANDARDS SERVICE
STANDARD TERMINAL ARRIVAL (STAR)

Bearings, headings, courses, tracks and radials are magnetic. Elevations and altitudes are in feet, MSL. Altitudes are minimum altitudes unless otherwise indicated.
Ceilings are in feet above airport elevation. Distances are in nautical miles. Visibilities are in statute miles or feet RVR unless otherwise indicated.

Arrival Name	Number	STAR Computer Code	Superseded Number	Dated	Effective Date
SWFFT (RNAV)	THREE	SWFFT.SWFFT3	TWO	07/24/2014	

CHANGES:

1. REMOVED VOLUNTEER AND ZANZA EN ROUTE TRANSITIONS.
2. ADDED EDDDY, RKMRT, AND THRSR EN ROUTE TRANSITIONS.
3. ADDED NOTE: JAGIR EN ROUTE TRANSITION FOR USE BY ATLANTA AREA DEPARTURES ONLY.
4. ADDED NEW HOLDING PATTERN AT BAMMA: HOLD E, LT, 260.39 INBOUND, 10 NM LEGS.
5. JAGIR TRANSITION: LOWERED MEA ON JAGIR TO LENSE SEGMENT FROM FL180 TO 15000.
6. JAGIR, RKMRT, THRSR TRANSITIONS: CHANGED ALTITUDE RESTRICTION AT LENSE FROM AT/ABOVE FL240 TO FL240-FL280.
7. COMMON ROUTE: CHANGED RESTRICTIONS AT SWFFT FROM 13000-FL200 TO 15000-FL190 AND AT 280 KIAS AND HIMAT FROM AT/ABOVE 10000 TO AT/ABOVE 12000; REMOVED ADAAY.
8. LANDING RWY 2L/C/R: ADDED TERMINUS POINT AMAND (AT 6000 AND AT 210 KIAS); REMOVED TEARS.
9. LANDING RWY 13: ADDED NEW FIXES BRITY (AT/ABOVE 10000 AND AT 250 KIAS) AND BCHRD (AT 9000 AND AT 250 KIAS); REMOVED OURRS; MOVED TERMINUS MEANN 1.22 NM SOUTHWEST AND CHANGED RESTRICTION FROM AT 5000 TO AT 9000.
10. LANDING RWY 20L/C/R: ADDED NEW FIXES RYANN (AT/ABOVE 10000 AND AT 250 KIAS) AND DEENN (AT/ABOVE 9000 AND AT 230 KIAS); CHANGED ALTITUDE RESTRICTIONS AT SIPPO FROM AT 5000 TO AT 8000; REMOVED BRETH, CORRA, AND HAKUM.
11. LANDING RWY 31: ADDED NEW FIXES PFWL (AT/ABOVE 10000 AND AT 250 KIAS), HOTTE (AT 8000 AND AT 230 KIAS), AND NEW TERMINUS CHKKN (AT 8000 AND AT 210 KIAS); REMOVED ONUGE.
12. CONSOLIDATED CHART NOTES EXPECT TO RECEIVE LANDING DIRECTION (NORTH/SOUTH/NORTHWEST) AND "DESCEND VIA" CLEARANCE FROM MEMPHIS CENTER; NASHVILLE APPROACH WILL ISSUE LANDING RUNWAY TO READ NOTE: EXPECT TO RECEIVE LANDING DIRECTION AND DESCEND VIA CLEARANCE FROM MEMPHIS CENTER. EXPECT RWY ASSIGNMENT FROM NASHVILLE APPROACH.
13. CONSOLIDATED CHART NOTES LANDING SOUTH INDICATES RWY 20L/20C/20R. LANDING NORTH INDICATES RWY 2L/2C/2R. LANDING NORTHWEST INDICATES RWY 31 TO READ NOTE: LANDING NORTH USE RWY 2R TRANSITION, LANDING SOUTH USE RWY 20L TRANSITION.
14. CHANGED TURBOJET NOTE TO REFLECT JET.
15. ADDED MOCA VALUES TO ALL TRANSITION ROUTES.
16. REMOVED NOTES RNAV-1 AND DME/DME/IRU OR GPS REQUIRED FROM PROCEDURAL DATA NOTES AND ADDED NOTE RNAV 1 - DME/DME/IRU OR GPS TO PBN REQUIREMENT NOTES.
17. MOVED RADAR REQUIRED FROM PROCEDURAL DATA NOTES TO EQUIPMENT REQUIREMENT NOTES.
18. ADDED TERMINUS INFORMATION TO ADDITIONAL FLIGHT DATA FOR RWYS 20L/C/R, 13, 31, 2L/C/R.
19. REMOVED AIRPORT NAME FROM AIRPORTS SERVED AND ADDED AIRPORT ID; REMOVED K IDENT FROM 17.1 FORM.
20. RECOMMENDED NAVAID AND HOLDING INFORMATION REMOVED FROM 8260-17.2.
21. REMOVED NASHVILLE EAST APPROACH CONTROL (118.4/360.7) AND NASHVILLE INTL ATIS FROM COMMUNICATIONS.
22. JAGIR TO LENSE COURSE CHANGE FROM 330.46 TO 330.49.
23. REMOVED MEAS FROM COMMON ROUTE AND RUNWAY TRANSITIONS.
24. REMOVED NOTE CROSS ZANZA AT/ABOVE FL240.
25. REMOVED CHART NOTE AT TEARS: LANDING RWY 2L/2C/2R: AFTER TEARS, TRACK 292, EXPECT RADAR VECTORS TO FINAL APPROACH COURSE.

REASONS:

- 1-4. ATC REQUEST.
5. ADEQUATE DME RESOLUTION.
- 6-11. ATC REQUEST
- 12-13. REDUCED CHART CLUTTER.
14. DOCUMENTED IAW 8260.19J 4-5-12d(3)(a).
15. MOCA VALUES ADDED IAW 8260.19J 4-5-12b(8).

FEDERAL AVIATION ADMINISTRATION
FLIGHT STANDARDS SERVICE
STANDARD TERMINAL ARRIVAL (STAR)

Bearings, headings, courses, tracks and radials are magnetic. Elevations and altitudes are in feet, MSL. Altitudes are minimum altitudes unless otherwise indicated.
Ceilings are in feet above airport elevation. Distances are in nautical miles. Visibilities are in statute miles or feet RVR unless otherwise indicated.

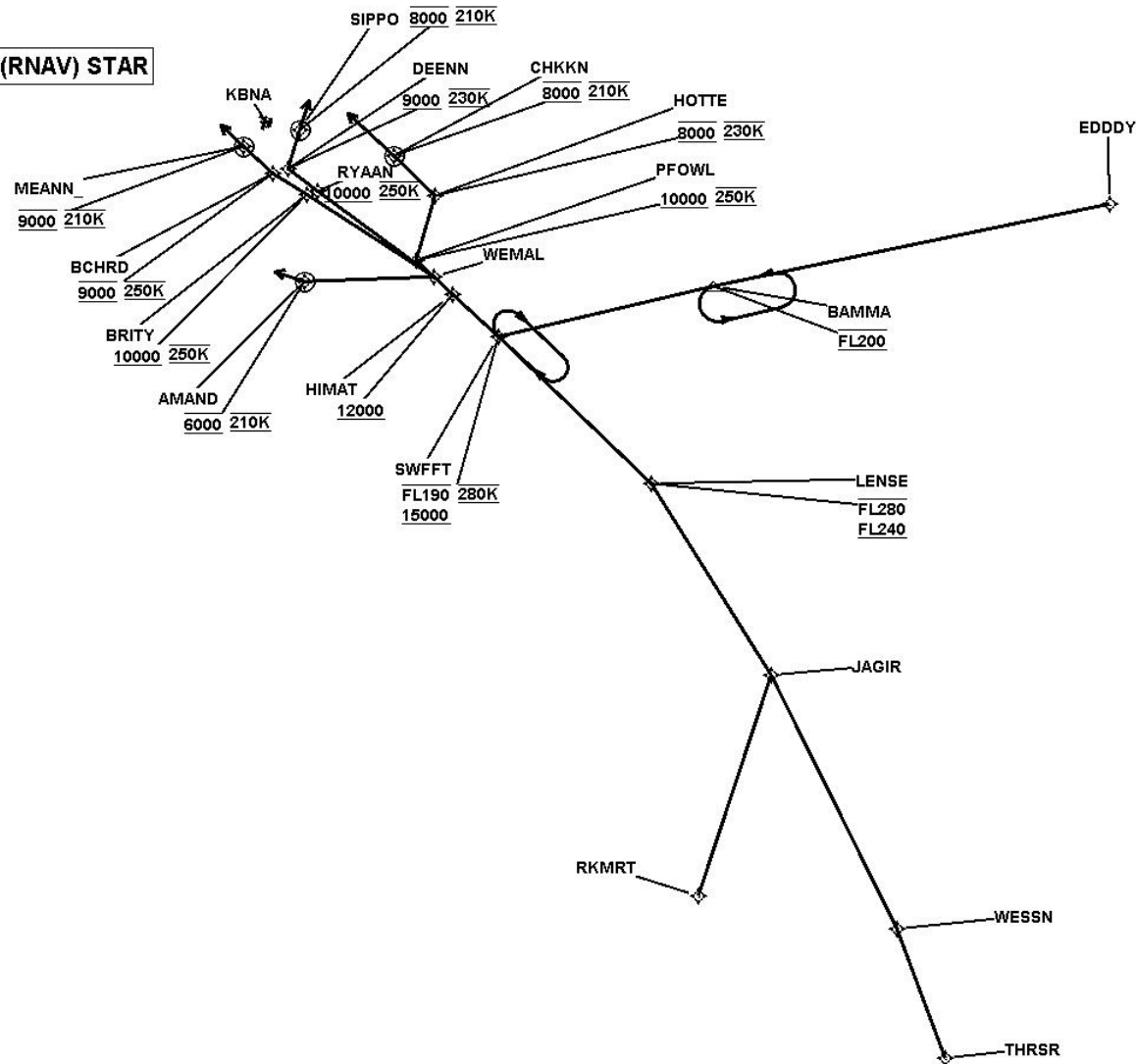
Arrival Name	Number	STAR Computer Code	Superseded Number	Dated	Effective Date
SWFFT (RNAV)	THREE	SWFFT.SWFFT3	TWO	07/24/2014	
16. PBN REQUIREMENTS DOCUMENTED IAW 8260.19J PARA 4-5-3d(1).					
17. RADAR REQUIRED DOCUMENTED IAW 8260.19J PARA 4-5-12d(2)(b).					
18. TERMINUS INFORMATION DOCUMENTED IAW 8260.19J 4-5-2h(2).					
19. IAW CURRENT DOCUMENTATION STANDARDS.					
20. NO LONGER REQUIRED.					
21. APPROACH CONTROL AND ATIS AUTOMATICALLY CHARTED AND DO NOT NEED TO BE DOCUMENTED IN THIS SECTION IAW 8260.19J 4-5-12f.					
22. UPDATED EVALUATION, FIX LOCATIONS UNCHANGED.					
23. DOCUMENTED TO CURRENT STANDARDS IAW 8260.19J 4-5-12c.					
24-25. REMOVED ZANZA AND TEARS FROM STAR. NOTES NO LONGER APPLY.					

FEDERAL AVIATION ADMINISTRATION
FLIGHT STANDARDS SERVICE
STANDARD TERMINAL ARRIVAL (STAR)

Bearings, headings, courses, tracks and radials are magnetic. Elevations and altitudes are in feet, MSL. Altitudes are minimum altitudes unless otherwise indicated.
Ceilings are in feet above airport elevation. Distances are in nautical miles. Visibilities are in statute miles or feet RVR unless otherwise indicated.

Arrival Name	Number	STAR Computer Code	Superseded Number	Dated	Effective Date
SWFFT (RNAV)	THREE	SWFFT.SWFFT3	TWO	07/24/2014	
Graphic Depiction 1					

KBNA SWFFT3 (RNAV) STAR

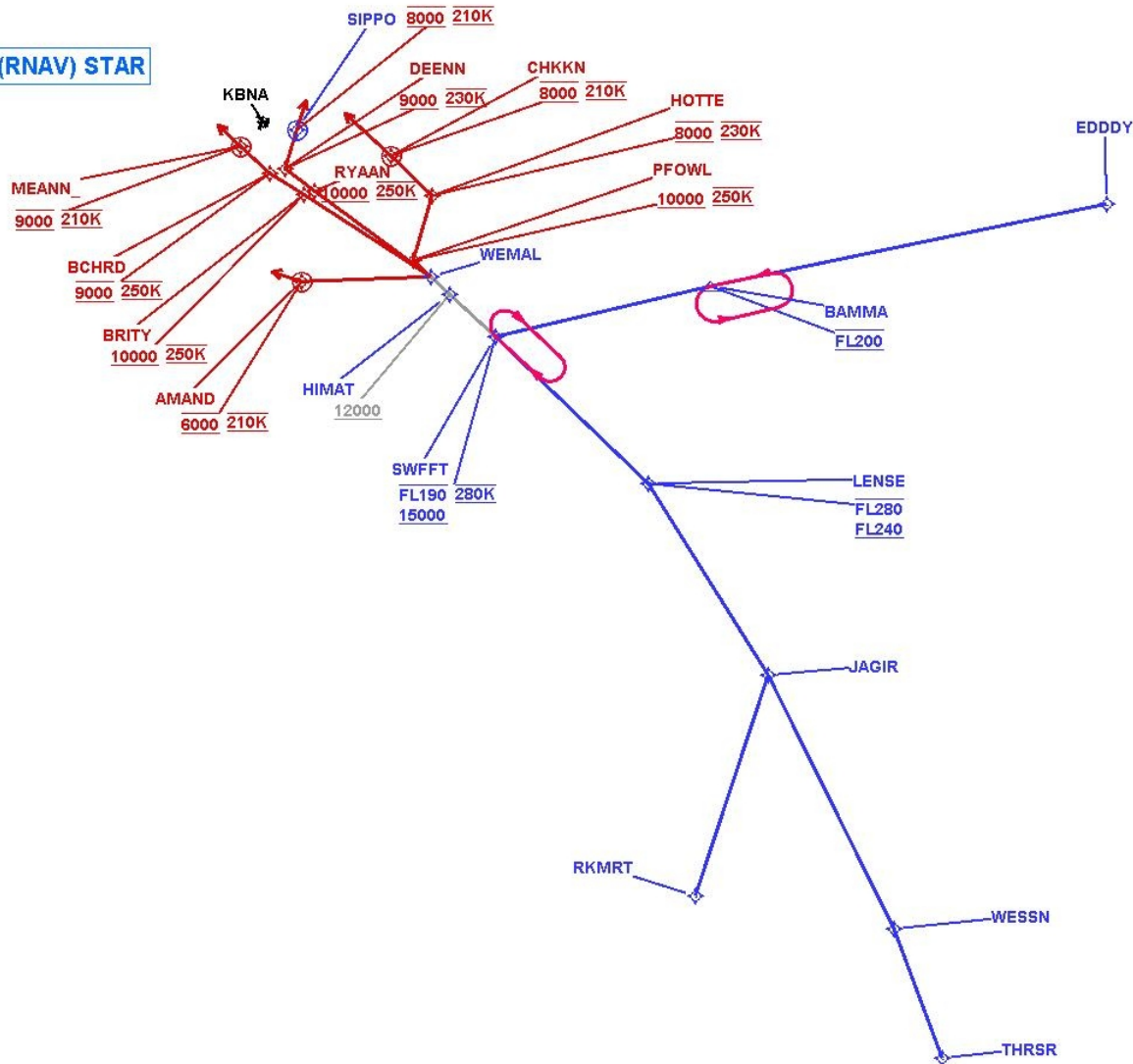


FEDERAL AVIATION ADMINISTRATION
FLIGHT STANDARDS SERVICE
STANDARD TERMINAL ARRIVAL (STAR)

Bearings, headings, courses, tracks and radials are magnetic. Elevations and altitudes are in feet, MSL. Altitudes are minimum altitudes unless otherwise indicated.
Ceilings are in feet above airport elevation. Distances are in nautical miles. Visibilities are in statute miles or feet RVR unless otherwise indicated.

Arrival Name	Number	STAR Computer Code	Superseded Number	Dated	Effective Date
SWFFT (RNAV)	THREE	SWFFT.SWFFT3	TWO	07/24/2014	
Graphic Depiction 2					

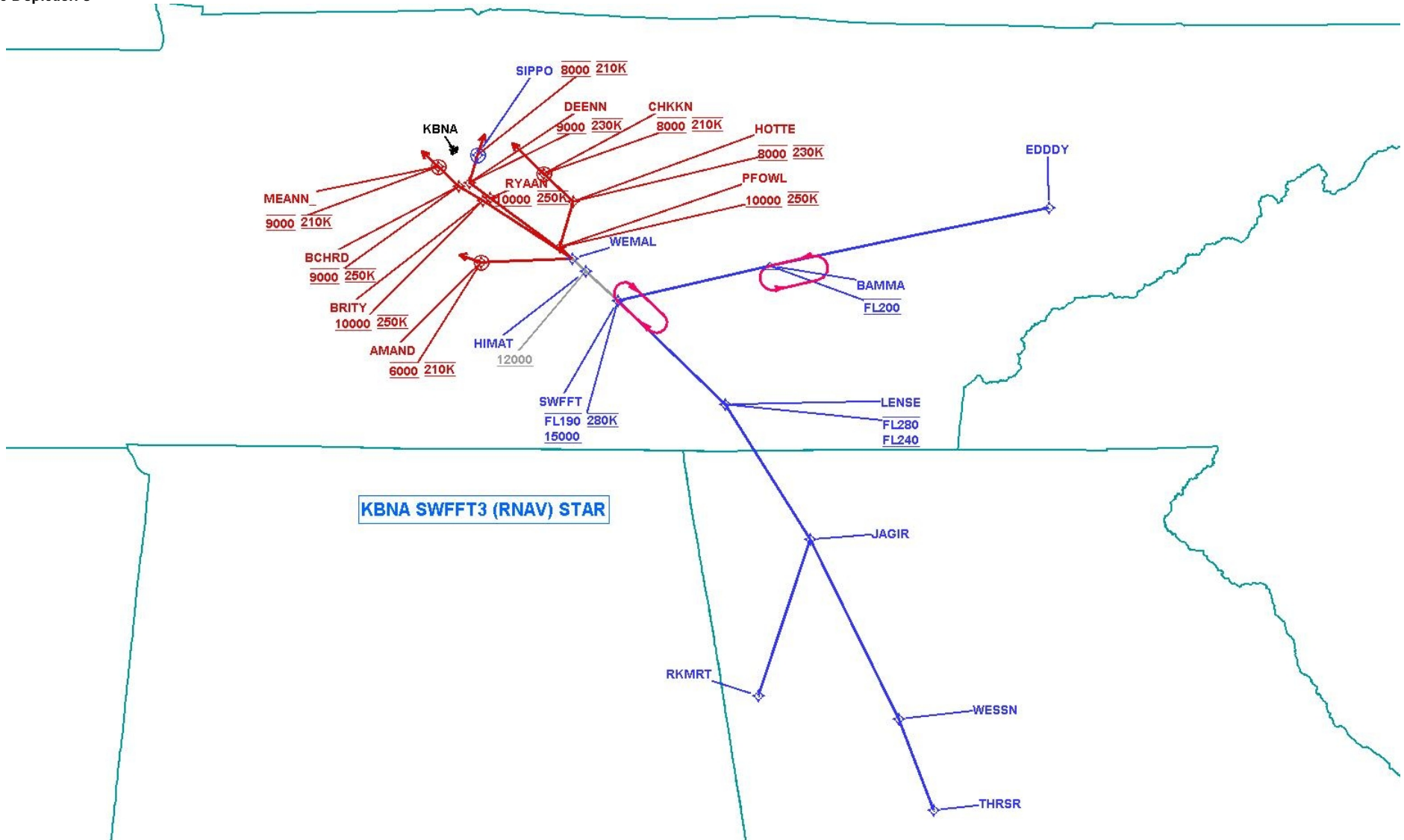
KBNA SWFFT3 (RNAV) STAR



FEDERAL AVIATION ADMINISTRATION
FLIGHT STANDARDS SERVICE
STANDARD TERMINAL ARRIVAL (STAR)

Bearings, headings, courses, tracks and radials are magnetic. Elevations and altitudes are in feet, MSL. Altitudes are minimum altitudes unless otherwise indicated.
Ceilings are in feet above airport elevation. Distances are in nautical miles. Visibilities are in statute miles or feet RVR unless otherwise indicated.

Arrival Name	Number	STAR Computer Code	Superseded Number	Dated	Effective Date
SWFFT (RNAV)	THREE	SWFFT.SWFFT3	TWO	07/24/2014	
Graphic Depiction 3					



FEDERAL AVIATION ADMINISTRATION
FLIGHT STANDARDS SERVICE
STAR (DATA RECORD)

Arrival Name SWFFT (RNAV)	Number THREE	STAR Computer Code SWFFT.SWFFT3		Superseded Number TWO		Dated 07/24/2014		Effective Date	
FIX/NAVAID	LAT/LONG	C	FO/FB	LEG TYPE	TC	DIST (NM)	ALTITUDE	SPEED	REMARKS
En Route Transition									
EDDDY	355417.33N / 0835341.72W	Y		IF					EDDDY.SWFFT3
BAMMA	354105.22N / 0851155.47W	Y	FB	TF	258.68	64.99	AT FL200		
SWFFT	353309.32N / 0855437.84W	Y	FB	TF	257.39	35.71	15000BFL190	AT 280K	
En Route Transition									
JAGIR	343901.51N / 0850041.48W	Y		IF					JAGIR.SWFFT3
LENSE	350933.55N / 0852424.89W	Y	FB	TF	327.49	36.19	FL240BFL280		
SWFFT	353309.32N / 0855437.84W	Y	FB	TF	313.77	34.14	15000BFL190	AT 280K	
En Route Transition									
RKMRT	340336.73N / 0851502.63W	Y		IF					RKMRT.SWFFT3
JAGIR	343901.51N / 0850041.48W	Y	FB	TF	018.51	37.30			
LENSE	350933.55N / 0852424.89W	Y	FB	TF	327.49	36.19	FL240BFL280		
SWFFT	353309.32N / 0855437.84W	Y	FB	TF	313.77	34.14	15000BFL190	AT 280K	
En Route Transition									
THRSR	333745.26N / 0842606.36W	Y		IF					THRSR.SWFFT3
WESSN	335825.07N / 0843546.71W	Y	FB	TF	338.70	22.15			
JAGIR	343901.51N / 0850041.48W	Y	FB	TF	333.14	45.49			
LENSE	350933.55N / 0852424.89W	Y	FB	TF	327.49	36.19	FL240BFL280		
SWFFT	353309.32N / 0855437.84W	Y	FB	TF	313.77	34.14	15000BFL190	AT 280K	
Common Route									
SWFFT	353309.32N / 0855437.84W	Y		IF			15000BFL190	AT 280K	SWFFT.SWFFT3
HIMAT	353954.99N / 0860340.90W	Y	FB	TF	312.49	10.00	AT/ABOVE 12000		
WEMAL	354237.31N / 0860718.62W	Y	FB	TF	312.44	04.00			

FEDERAL AVIATION ADMINISTRATION
FLIGHT STANDARDS SERVICE
STAR (DATA RECORD)

Arrival Name SWFFT (RNAV)	Number THREE		STAR Computer Code SWFFT.SWFFT3		Superseded Number TWO		Dated 07/24/2014		Effective Date
<u>FIX/NAVAID</u>	<u>LAT/LONG</u>	<u>C</u>	<u>FO/FB</u>	<u>LEG TYPE</u>	<u>TC</u>	<u>DIST (NM)</u>	<u>ALTITUDE</u>	<u>SPEED</u>	<u>REMARKS</u>
Runway Transition									
WEMAL	354237.31N / 0860718.62W	Y		IF					
AMAND	354154.18N / 0863259.22W	Y	FO	TF	268.16	20.92	AT 6000	AT 210K	
KBNA:RWY 2C,RWY 2L,RWY 2R				FM	287.80				
Runway Transition									
WEMAL	354237.31N / 0860718.62W	Y		IF					
BRITY	355545.74N / 0863231.64W	Y	FB	TF	302.73	24.35	AT/ABOVE 10000	AT 250K	
BCHRD	355911.20N / 0863908.98W	Y	FB	TF	302.49	06.37	AT 9000	AT 250K	
MEANN	360332.23N / 0864458.03W	Y	FO	TF	312.66	06.41	AT 9000	AT 210K	
KBNA:RWY 13				FM	312.66				
Runway Transition									
WEMAL	354237.31N / 0860718.62W	Y		IF					
RYAAN	355624.00N / 0863019.91W	Y	FB	TF	306.42	23.23	AT/ABOVE 10000	AT 250K	
DEENN	355956.77N / 0863617.93W	Y	FB	TF	306.20	06.00	AT/ABOVE 9000	AT 230K	
SIPPO	360604.77N / 0863350.61W	Y	FO	TF	018.00	06.44	AT 8000	AT 210K	
KBNA:RWY 20C,RWY 20L,RWY 20R				FM	018.00				
Runway Transition									
WEMAL	354237.31N / 0860718.62W	Y		IF					
PFOWL	354519.17N / 0861056.12W	Y	FB	TF	312.41	04.00	AT/ABOVE 10000	AT 250K	
HOTTE	355541.49N / 0860701.56W	Y	FB	TF	017.04	10.83	AT 8000	AT 230K	
CHKKN	360158.73N / 0861515.47W	Y	FO	TF	313.26	09.17	AT 8000	AT 210K	
KBNA:RWY 31				FM	313.26				