

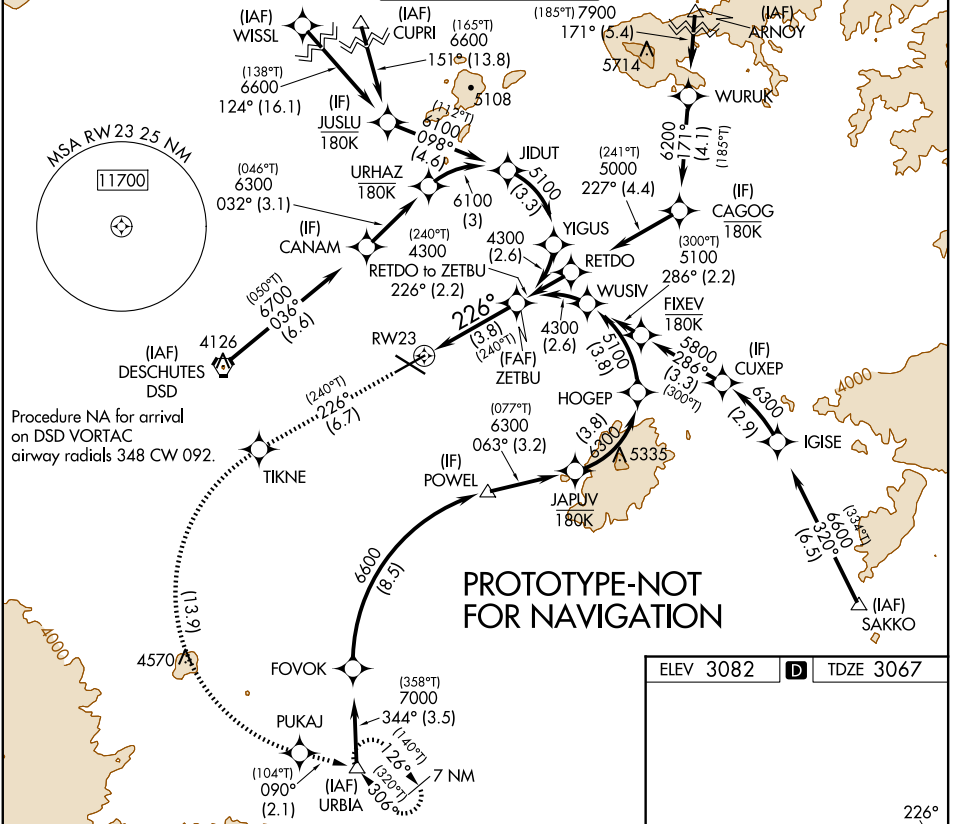
APP CRS 226°	Rwy Idg TDZE Apt Elev	7031 3067 3082
------------------------	-----------------------------	---

RNAV (RNP) Z RWY 23

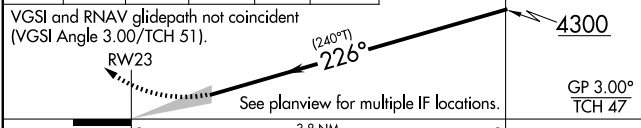
ROBERTS FLD (R.D.M)

RNP AR APCH - GPS, RF. Authorization Required. From ARNOY: Min RNP 0.70.		MALSRS	MISSED APPROACH: Climb to 8500 on track 226° to TIKNE left turn to PUKAJ and on track 090° to URBIA and hold, continue climb-in-hold to 8500.
-17°C For uncompensated Baro-VNAV systems, procedure NA below -16°C or above 54°C. For inop ALS, increase RNP 0.10 all Cats visibility to ¾ SM. For inop ALS, increase RNP 0.30 all Cats visibility to 1½ SM.			

ATIS 119.025	SEATTLE CENTER 126.15 269.475	REDMOND TOWER* 124.5 (CTAF) 256.8	GND CON 121.8	UNICOM 122.95
------------------------	---	---	-------------------------	-------------------------

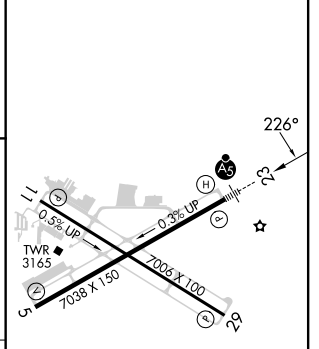


8500 ↑ fr 226°	TIKNE	PUKAJ	tr 090°	URBIA	ZETBU
----------------------	-------	-------	---------	-------	-------



CATEGORY	A	B	C	D
RNP 0.10 DA		3322-½	255 (300-½)	
RNP 0.30 DA		3552-1	485 (500-1)	

ELEV 3082		TDZE 3067
-----------	--	-----------



- REIL Rwy 5, 11, and 29
- HIRL Rwy 5-23
- MIRL Rwy 11-29

AUTHORIZATION REQUIRED