

Flight Procedures Cover Page	Task Action: FLIGHT CHECK	Task Type: IAP	Estimated Chart Date: 05/14/2026	APWS Task ID: 4A01D25B31EC4A2987CA2DDADB3E7365	APWS Project ID: 5C03627D17384B3DAFACC4AFA3EB33E5
Procedure: ILS OR LOC RWY 36 AMDT 2A		Enroute: NO	Specialist: Hill, Phillip		Agreement Number:
Airport ID: KGAO			Airport City: GALLIANO		State: LA
Facility ID: GAO	Facility Type: ILS	Flight Inspection Remark Type: New FC Slot			

**Procedure Comments:**  
ACTIVE AIRNAV DATA USED FOR KGAO AIRPORT AND RUNWAY.

CLEAR NOTAM: FDC 5/1073

NEW CONTROLLING OBSTACLES:  
MISSED LEVEL SURFACE - 214 AAO 293051.00N/0901721.00W.  
CIRCLING CAT B - 196 TRANSMISSION LINE (22-001057) 292531.00N/0901411.00W.

CONTACT ROBERT HAMILTON: AJV-A433, 405-954-6103.





LOC/DME I-GAO <b>109.1</b> Chan 28	APP CRS <b>359°</b>	Rwy Ldg TDZE Apt Elev	<b>6500</b> <b>-2</b> <b>0</b>
--	------------------------	-----------------------------	--------------------------------------

# ILS or LOC RWY 36

SOUTH LAFOURCHE LEONARD MILLER JR (GAO)

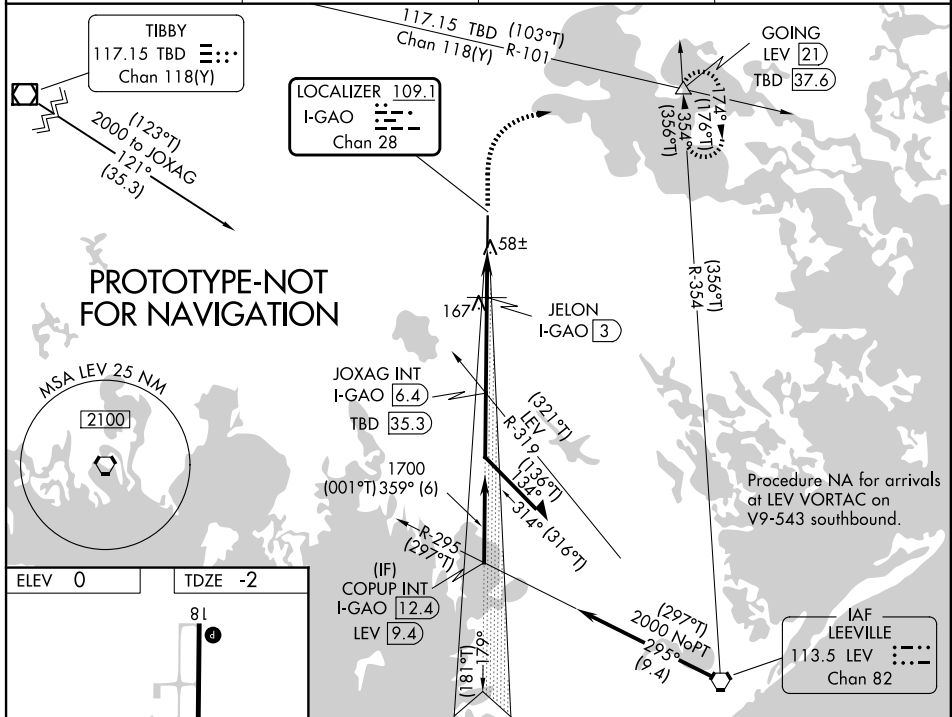
DME required.

Autopilot coupled approach NA below 210 feet.

SSALR

MISSED APPROACH: Climb to 1200 then climbing right turn to 2000 on heading 050° and TBD VOR/DME R-101 to GOING INT/LEV 21 DME and hold.

AWOS-3PT <b>118.175</b>	NEW ORLEANS APP CON <b>120.85 256.9</b>	CLNC DEL <b>120.85</b>	UNICOM <b>123.0 (CTAF) 0</b>
----------------------------	--	---------------------------	---------------------------------



ELEV 0 TDZE -2

81

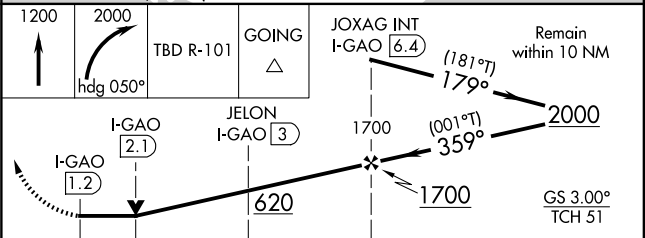
6500 X 100

MIRL Rwy 18-36

REIL Rwy 18

36

359°



CATEGORY	A	B	C	D
S-ILS 36		198-1/2	200 (200-1/2)	
S-LOC 36		320-1/2	322 (400-1/2)	
CIRCLING	440-1 440 (500-1)	560-1 560 (600-1)	640-1 3/4 640 (700-1 3/4)	640-2 640 (700-2)

OLD

GALLIANO, LOUISIANA

AL-9049 (FAA)

24361

LOC/DME I-GAO <b>109.1</b> Chan 28	APP CRS <b>359°</b>	Rwy Idg <b>6500</b> TDZE <b>-2</b> Apt Elev <b>0</b>
--	------------------------	--

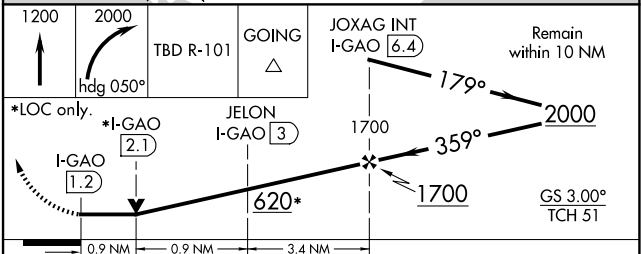
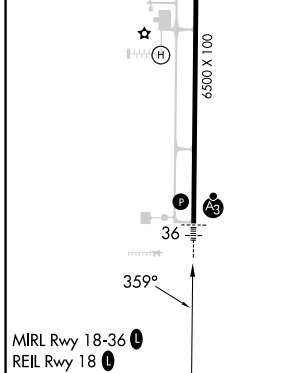
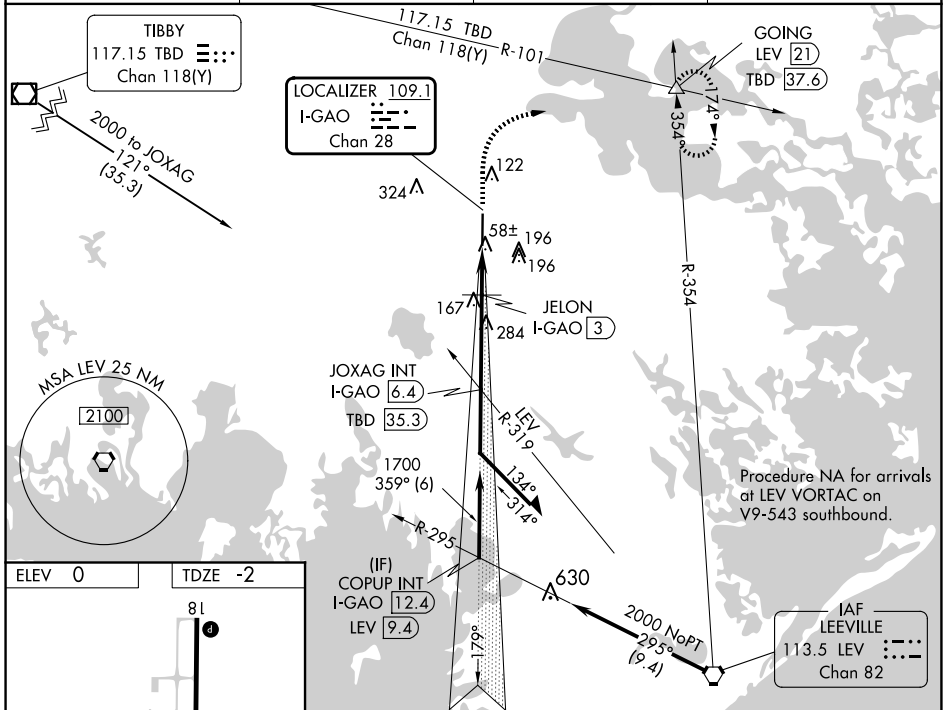
# ILS or LOC RWY 36

SOUTH LAFOURCHE LEONARD MILLER JR (GAO)

DME required.	SSALR 

MISSED APPROACH: Climb to 1200, then climbing right turn to 2000 on heading 050° and TBD VOR/DME R-101 to GOING INT/LEV 21 DME and hold.

AWOS-3PT <b>118.175</b>	NEW ORLEANS APP CON <b>120.85 256.9</b>	CLNC DEL <b>120.85</b>	UNICOM <b>123.0 (CTAF) 0</b>
----------------------------	--	---------------------------	---------------------------------



CATEGORY	A	B	C	D
S-ILS 36		198-1/2	200 (200-1/2)	
S-LOC 36		320-1/2	322 (400-1/2)	
CIRCLING	440-1 440 (500-1)	560-1 560 (600-1)	640-1 3/4 640 (700-1 3/4)	640-2 640 (700-2)

GALLIANO, LOUISIANA  
Amdt 2 28FEB19

SOUTH LAFOURCHE LEONARD MILLER JR (GAO)  
29°26'N-90°16'W  
**ILS or LOC RWY 36**

SC-4, 30 OCT 2025 to 27 NOV 2025

SC-4, 30 OCT 2025 to 27 NOV 2025