

Flight Procedures Cover Page	Task Action: Cancellation	Task Type: SID	Estimated Chart Date: 08/07/2025	APWS Task ID: 4A1DD3C13973486ABC0DAFAFD68F5B03	APWS Project ID: 30BD643A66B24F7DAA04D91A30278515
Procedure: SUMNER TWO DEPARTURE (RNAV)		Enroute: YES	Specialist: Palmer, Leo		Agreement Number:
Airport ID: PAWG			Airport City: WRANGELL		State: AK
Facility ID:	Facility Type:	Flight Inspection Remark Type:			
<div>Procedure Comments: CANCEL SUMNER SID, PER ZAN AND FPT  CONTACT DAVE DANNER (405) 954-5077  SPECIAL</div> <div>QUALITY 23 CHECKED</div>					

# INFORMATION ONLY

(SQM2.SQM) SPECFIG

SL-5874 (FAA)

WRANGELL (WRG) (PAWG)

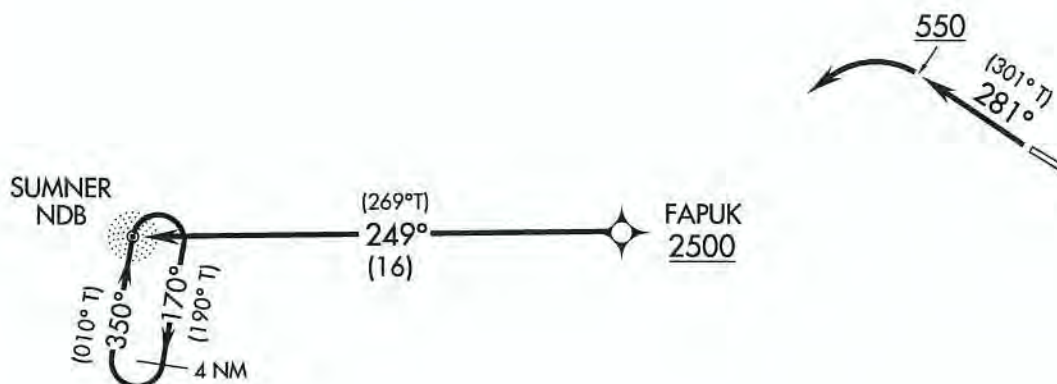
SUMNER TWO DEPARTURE (RNAV)

WRANGELL, ALASKA

ANCHORAGE CENTER  
118.0  
SITKA RADIO  
122.45  
CTAF  
122.6

SPECIAL FIG

PROTOTYPE-NOT FOR NAVIGATION



## TAKEOFF MINIMUMS

Rwy 10: NA - Obstacles.

Rwy 28: CATs A/B, Standard with minimum climb of 350' per NM to 2500.  
CATs C/D not authorized.

## TAKEOFF OBSTACLE NOTES

Rwy 28: Trees and rising terrain beginning 84' from DER, 266' left of centerline, up to 23' AGL/122' MSL.

NOTE: GPS Required.

NOTE: For use by aircraft equipped with dual operational TSO C145A/146A WAAS compatible receivers.

NOTE: For use by /G and /R (RNP 1.0) equipped aircraft only. /G aircraft with selectable CDI must use the flight director.

NOTE: Do not exceed 140 knots until FAPUK.

NOTE: Chart not to scale.



## DEPARTURE ROUTE DESCRIPTION

TAKEOFF RWY 10: NA.

TAKEOFF RWY 28: Climb heading 281° to 550, then climbing left turn to 4000 direct FAPUK, then on track 249° to SQM NDB. Cross FAPUK at or above 2500.

SUMNER TWO DEPARTURE (RNAV)

(SQM2.SQM) SPECFIG

WRANGELL, ALASKA  
WRANGELL (WRG) (PAWG)