

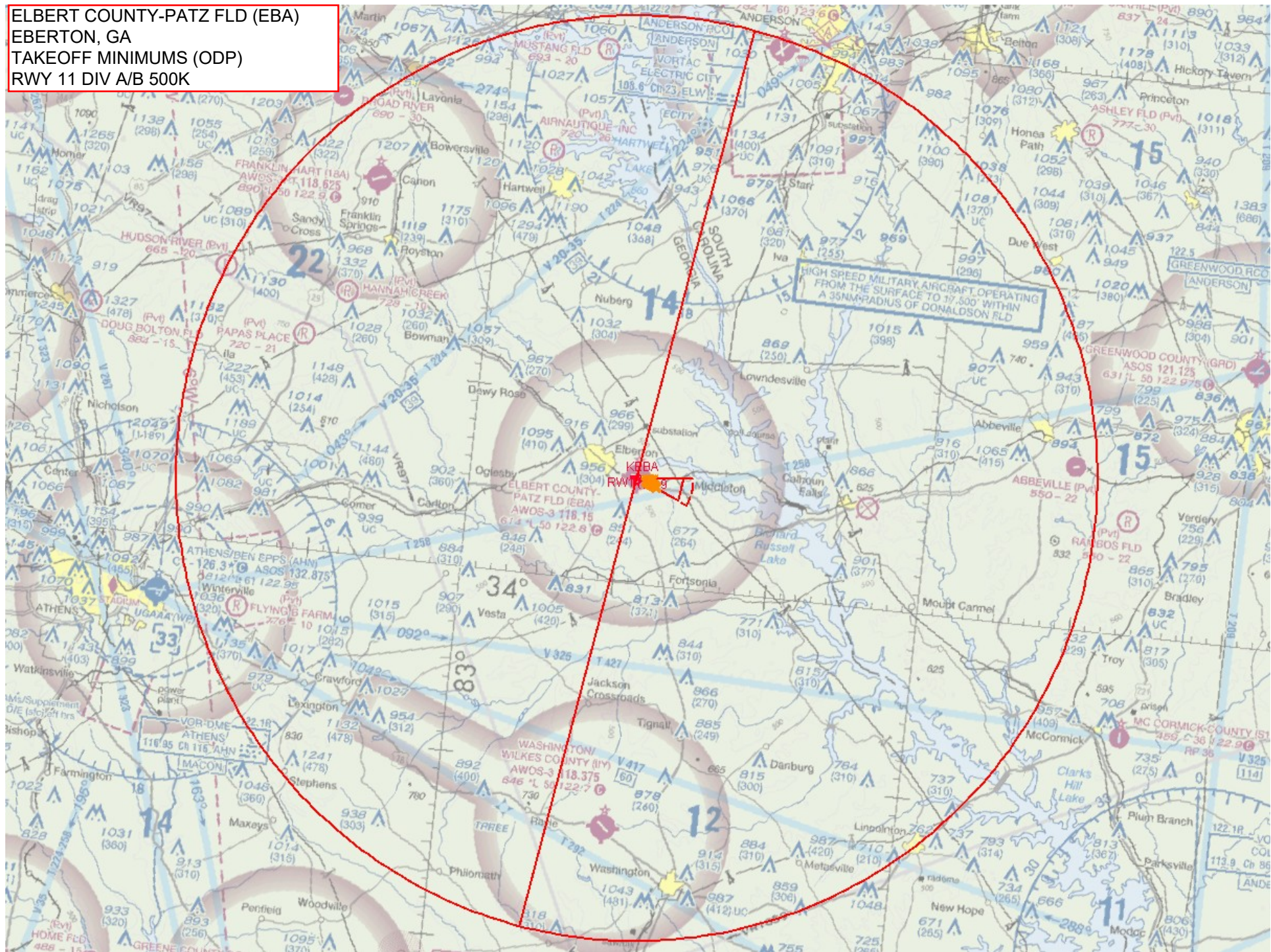
Flight Procedures Cover Page	Task Action: Abbreviated Amendment	Task Type: Textual DP	Estimated Chart Date: 02/20/2025	APWS Task ID: 4BF083DF09B74E50A55920D91FF817BF	APWS Project ID: 9494107950EA4FB996611BDF01C2ED74
Procedure: TAKEOFF MINIMUMS AND OBSTACLE DP AMDT 1A		Enroute: NO	Specialist: Palmer, Leo		Agreement Number:
Airport ID: KEBA			Airport City: ELBERTON		State: GA
Facility ID:	Facility Type:	Flight Inspection Remark Type:			

Procedure Comments:

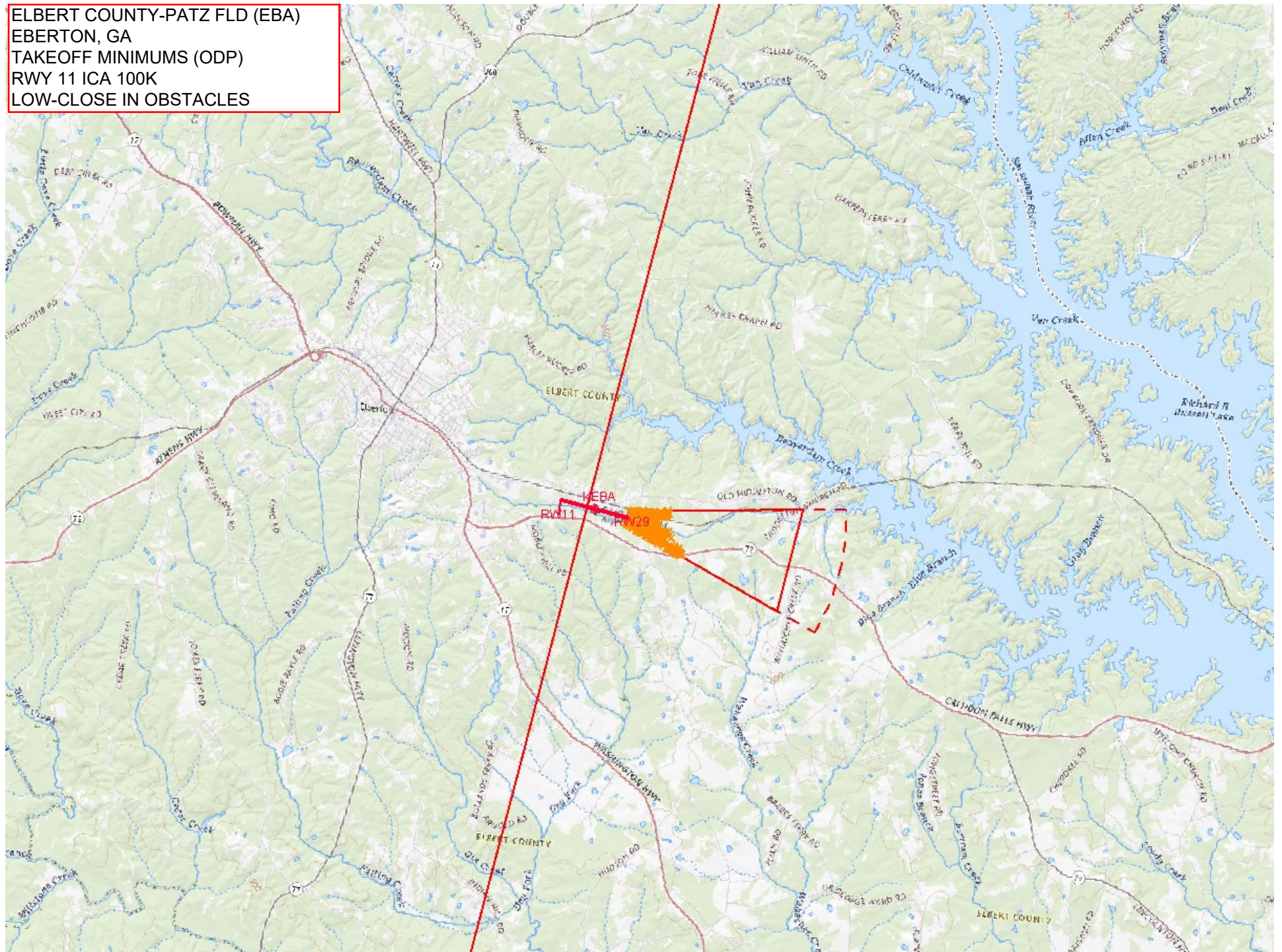
- CLEAR T-NOTAM: FDC 4/7810 - ADD/UPDATE TAKEOFF OBSTACLE NOTES FOR RWYS 11, 29 FOR TARGETS-IDENTIFIED LOW CLOSE-INS THAT ARE EITHER CLOSER TO THE DER OR TALLER THAN THOSE ALREADY PUBLISHED.
- PROCESSED IAW TECHNICAL SUPPORT GROUP (AJF-17) MEMO DATED 07/07/2021, SUBJECT: GUIDANCE FOR PROCEDURAL CHANGES REQUIRING FLIGHT INSPECTION/VALIDATION.
- ACTIVE AIRPORT DATA USED. (10-05-23 CHART)
- PER OIT, DO NOT LOWER MINS AT THIS TIME.
- CONTACT DAVE DANNER (405)954-5077



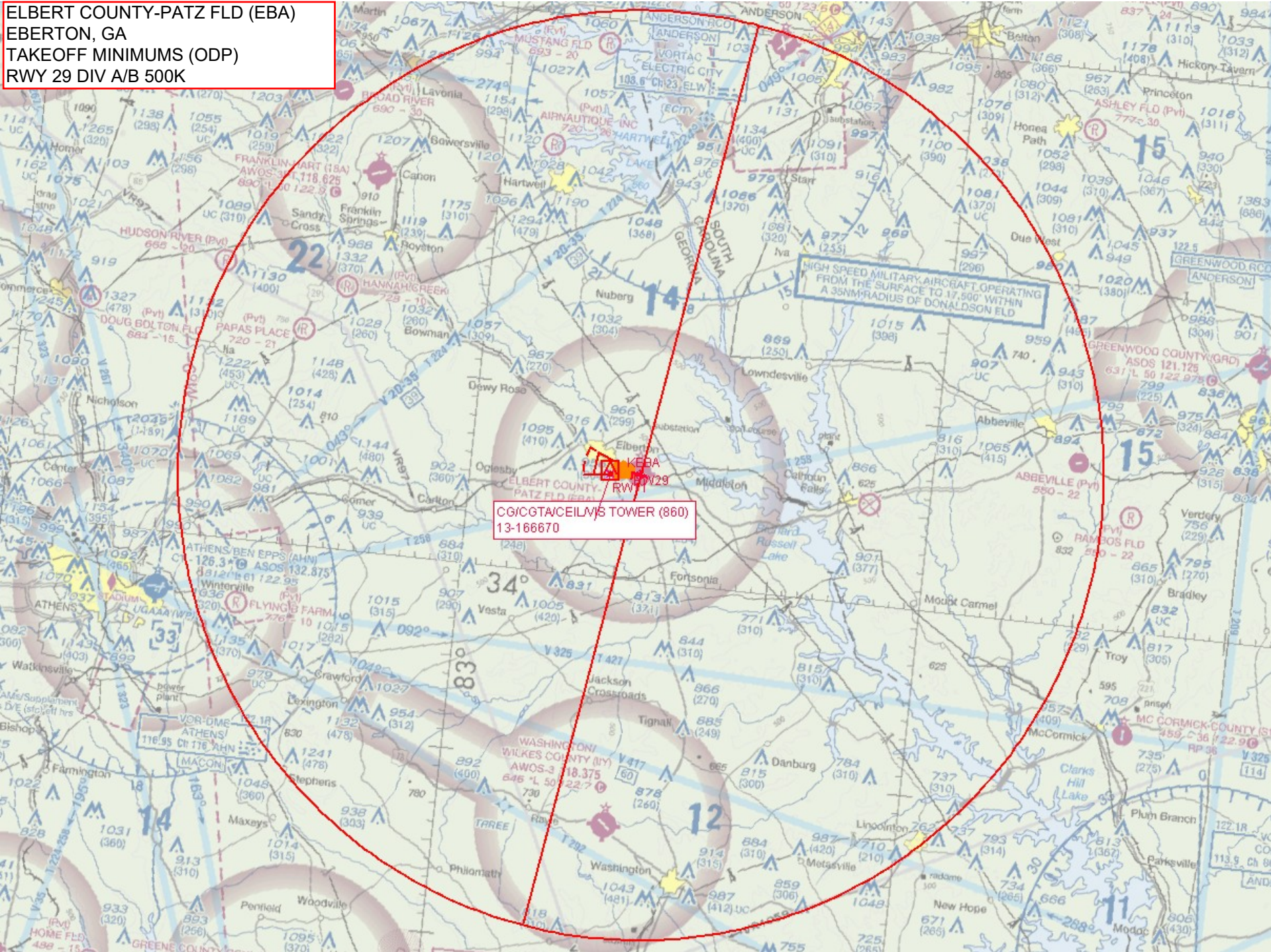
ELBERT COUNTY-PATZ FLD (EBA)
EBERTON, GA
TAKEOFF MINIMUMS (ODP)
RWY 11 DIV A/B 500K



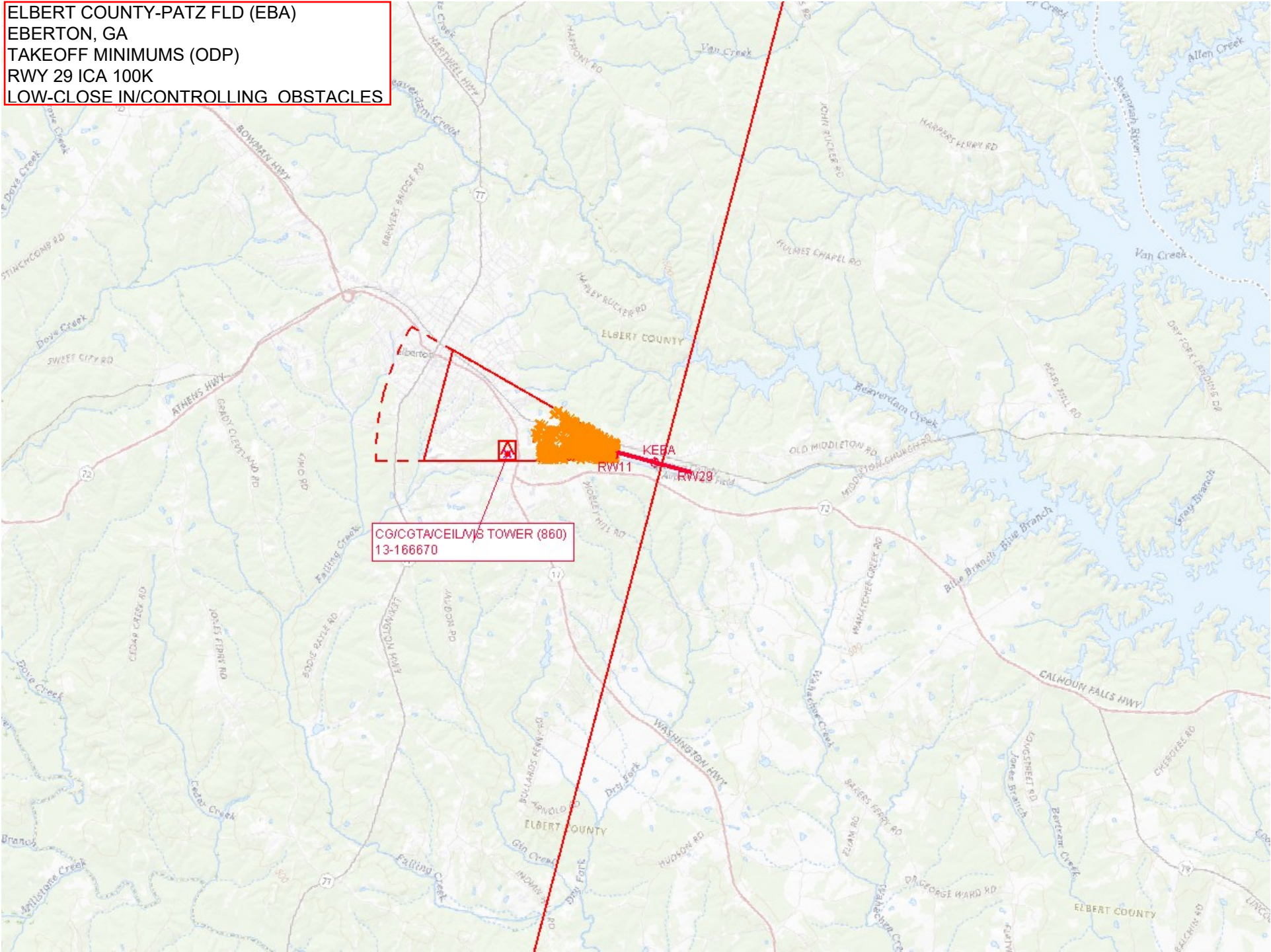
ELBERT COUNTY-PATZ FLD (EBA)
EBERTON, GA
TAKEOFF MINIMUMS (ODP)
RWY 11 ICA 100K
LOW-CLOSE IN OBSTACLES



ELBERT COUNTY-PATZ FLD (EBA)
EBERTON, GA
TAKEOFF MINIMUMS (ODP)
RWY 29 DIV A/B 500K



ELBERT COUNTY-PATZ FLD (EBA)
EBERTON, GA
TAKEOFF MINIMUMS (ODP)
RWY 29 ICA 100K
LOW-CLOSE IN/CONTROLLING OBSTACLES



CGICGT/CEIL/VIS TOWER (860)
13-166670