

TOOELE, UTAH

AL-6944 (FAA)

FIG

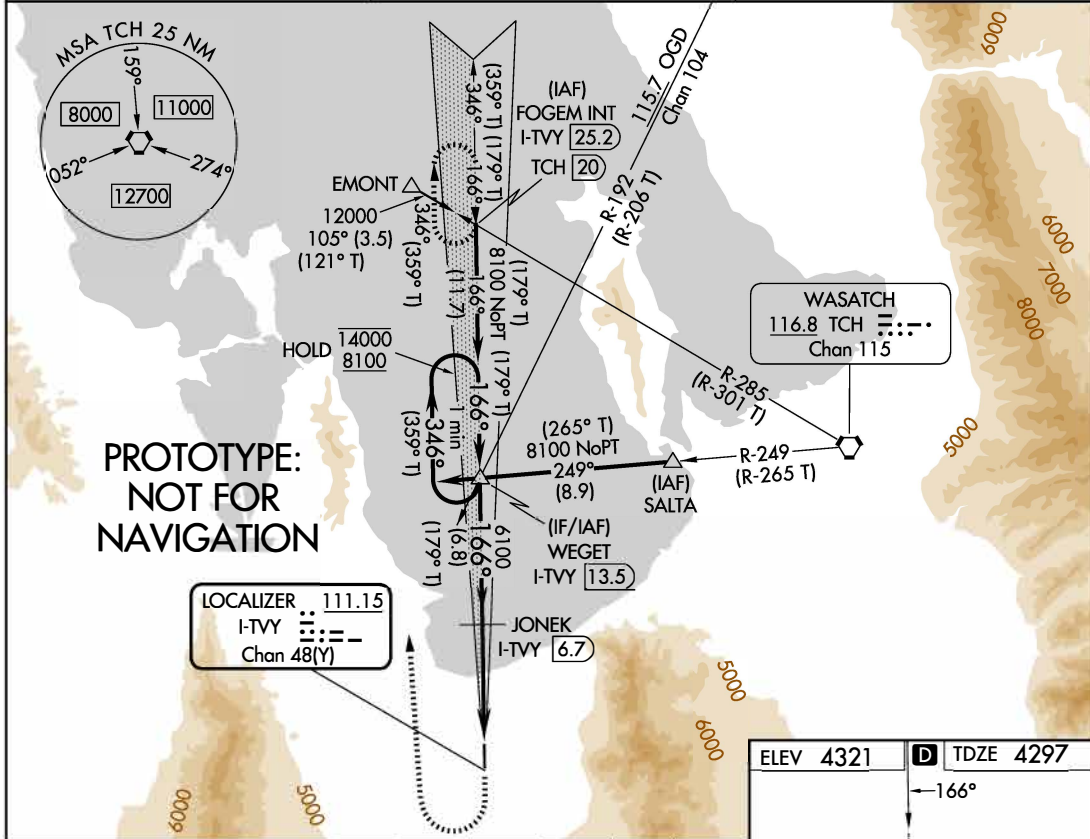
LOC/DME I-TVY 111.15 Chan 48(Y)	APP CRS 166°	Rwy Ldg TDZE Apt Elev 6102 4297 4321
---	------------------------	--

ILS or LOC RWY 17

BOLINDER FLD/TOOELE VALLEY (TVY)

DME required.	MALSRS 	MISSED APPROACH: Climb to 5400 then climbing right turn to 8600 heading 343° and OGD VORTAC R-192 to WEGET INT/I-TVY 13.5 DME and I-TVY north course to FOGEM INT/I-TVY 25.2 DME and hold.
 For inop ALS, increase S-LOC Cat C/D visibility to 1½ SM.		

AWOS-3PT 119.725	SALT LAKE CITY APP CON 135.5 316.15	UNICOM 123.0 (CTAF)
----------------------------	---	-------------------------------

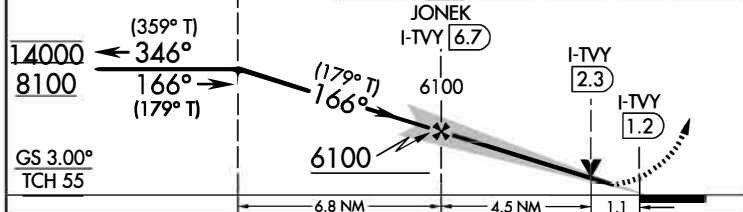


**PROTOTYPE:
NOT FOR
NAVIGATION**

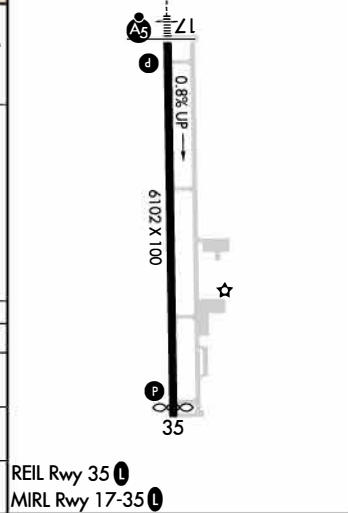
LOCALIZER I-TVY Chan 48(Y)	111.15
----------------------------------	---------------

ELEV 4321	D TDZE 4297
-----------	--------------------

One Minute Holding Pattern	WEGET I-TVY 13.5	OGD R-192	WEGET	I-TVY N crs	FOGEM INT
----------------------------	------------------	-----------	-------	-------------	-----------



CATEGORY	A	B	C	D
S-ILS 17	4537-½ 240 (300-½)			
S-LOC 17	4680-½	383 (400-½)	4680-⅝	383 (400-⅝)
CIRCLING	4820-1 499 (500-1)	4900-1 579 (600-1)	5100-2¼ 779 (800-2¼)	5380-3 1059 (1100-3)



AUTOMATED AL-6944 ILS or LOC RWY 17 AUTOMATED AL-6944 ILS or LOC RWY 17

1:750,000

SW-4
30 DEC 2025
COMPILER: CG
REVIEWER:
DBL CHKR:
EFF: FIG

TOOELE, UTAH
Amdt 3A FIG

40°37'N-112°21'W

BOLINDER FLD/TOOELE VALLEY (TVY)
ILS or LOC RWY 17