

Flight Procedures Cover Page	Task Action: Cancellation	Task Type: IAP	Estimated Chart Date: 05/14/2026	APWS Task ID: 4E7E0A64830E47C3BC3F2383E2994D98	APWS Project ID: BFB4C7D3E1444E53ACC68B87DA35AC34
Procedure: VOR/DME-A AMDT 2B		Enroute: NO	Specialist: Dugan, Joshua		Agreement Number:
Airport ID: 25M			Airport City: RIPLEY	State: MS	
Facility ID: HLI	Facility Type: VORTAC	Flight Inspection Remark Type:			
<p>Procedure Comments: CANCEL IAP</p> <p>HLI VORTAC DECOM</p> <p>CONTACT ROBERT HAMILTON AJV-A433 405-954-4608</p>					



RIPLEY, MISSISSIPPI

AL-6339 (FAA)

21252

VORTAC HLI 112.4 Chan 71	APP CRS 094°	Rwy Idg TDZE Apt Elev 467	N/A N/A 467
--	------------------------	---	--

VOR/DME-A

RIPLEY (25M)

▼ Use Corinth altimeter setting; when not received, use Tupelo altimeter setting and increase all MDAs 40 feet, and visibility Cat C ¼ SM.
▲ NA Procedure NA at night. Helicopter visibility reduction below 1 SM NA.

MISSED APPROACH: Climbing left turn to 3000 via heading 251° and HLI VORTAC R-094 to HLI VORTAC R-094 to HLI VORTAC and hold.

CRX AWOS-3PT 118.675	MEMPHIS CENTER 135.9 260.6	UNICOM 122.8 (CTAF) 1
--------------------------------	--------------------------------------	---------------------------------

Procedure NA for arrivals on HLI VORTAC airway radials 045 CW 112.

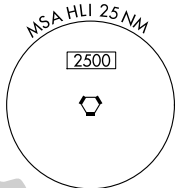
IAF
HOLLY SPRINGS
112.4 HLI [112.4]
Chan 71

(IF) TIRED
HLI [10]

▲ 935

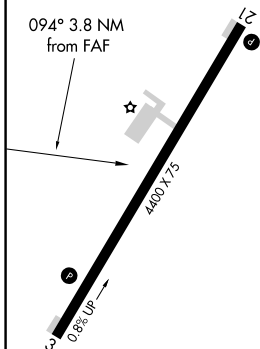
▲ 902

▲ 1050

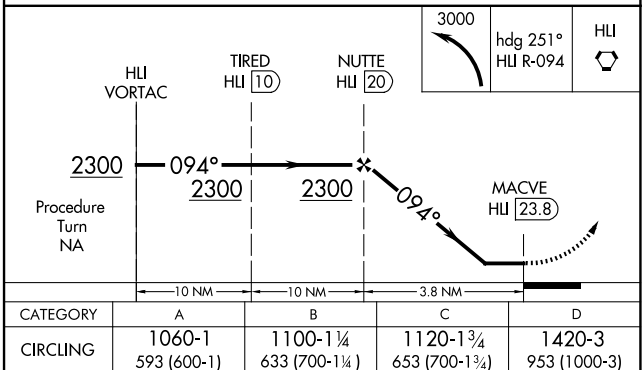


ELEV 467

094° 3.8 NM from FAF



1126 ▲



RIPLEY, MISSISSIPPI
Amdt 2B 09SEP21

34°43'N-89°01'W

RIPLEY (25M)

VOR/DME-A

SC-4, 19 FEB 2026 to 19 MAR 2026

SC-4, 19 FEB 2026 to 19 MAR 2026