

Flight Procedures Cover Page	Task Action: Abbreviated Amendment	Task Type: IAP	Estimated Chart Date: 09/05/2024	APWS Task ID: 4EE6689553BF4984AC42F8F3A58E0B91	APWS Project ID: 2843C4442BBD40EBAD4185C4CF19C4D9
Procedure: VOR Y OR TACAN Y RWY 15 AMDT 14C		Enroute: NO	Specialist: Armentrout, Britney		Agreement Number:
Airport ID: KCHS			Airport City: CHARLESTON		State: SC
Facility ID:	Facility Type:	Flight Inspection Remark Type:			

Procedure Comments:

PROCEDURE NAME CHANGED FROM VOR OR TACAN RWY 15 TO VOR Y OR TACAN Y RWY 15.

ACTIVE AIRNAV DATA USED.

PROCESSED IAW TECHNICAL SUPPORT GROUP (AJF-17) MEMO DATED 07/07/2021, SUBJECT: GUIDANCE FOR PROCEDURAL CHANGES REQUIRING FLIGHT INSPECTION/VALIDATION.

CONTACT RAKE MCGRAW AJV-A422.

QUALITY
10
CHECKED

QUALITY
41
CHECKED

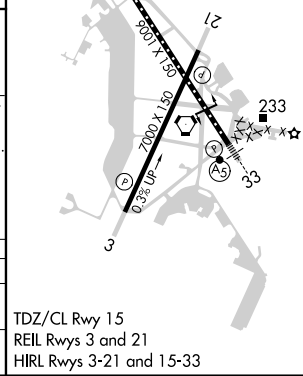
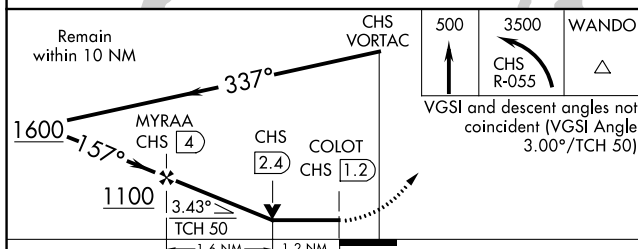
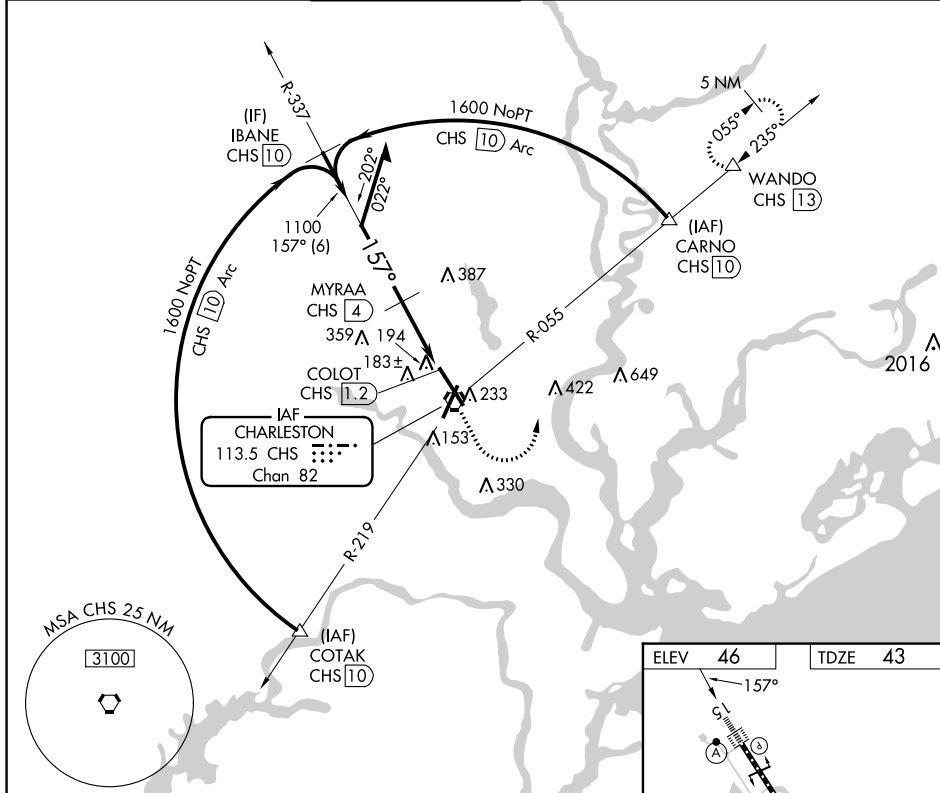
VORTAC CHS	APP CRS	Rwy Idg	9001
113.5	157°	TDZE	43
Chan 82		Apt Elev	46

VOR or TACAN RWY 15

CHARLESTON AFB/INTL (CHS)

DME required.	ALSF-2	MISSED APPROACH: Climb to 500 then climbing left turn to 3500 on CHS VORTAC R-055 to WANDO/CHS 13 DME and hold, continue climb-in-hold to 3500.
For inop ALS, increase S-15 Cat A/B visibility to RVR 5500 and Cat C/D visibility to RVR 6000.		

D-ATIS 124.75	CHARLESTON APP CON 120.7 306.925	CHARLESTON TOWER 126.0 239.0	GND CON 121.9 348.6	CLNC DEL 127.325 291.65	CPDLC
-------------------------	--	--	-------------------------------	-----------------------------------	-------



CATEGORY	A	B	C	D
S-15	460/24	417 (500-½)	460/40	417 (500-¾)
CIRCLING	540-1	494 (500-1)	540-1½ 494 (500-1½)	740-2¼ 694 (700-2¼)

SE-2, 22 FEB 2024 to 21 MAR 2024

SE-2, 22 FEB 2024 to 21 MAR 2024