

ASTORIA, OREGON

AL-24 (FAA)

FIG

WAAS CH <b>40032</b> <b>W08A</b>	APP CRS <b>080°</b>	Rwy Ldg TDZE <b>14</b> Apt Elev <b>15</b>	<b>4894</b>
--	------------------------	---	-------------

# RNAV (GPS) RWY 8

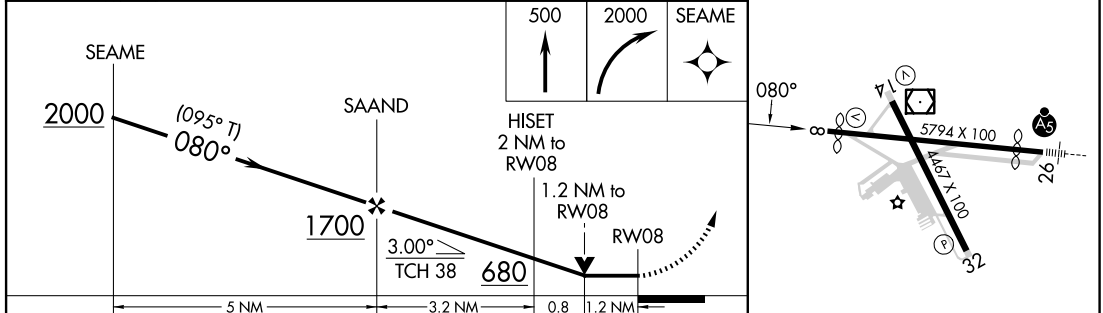
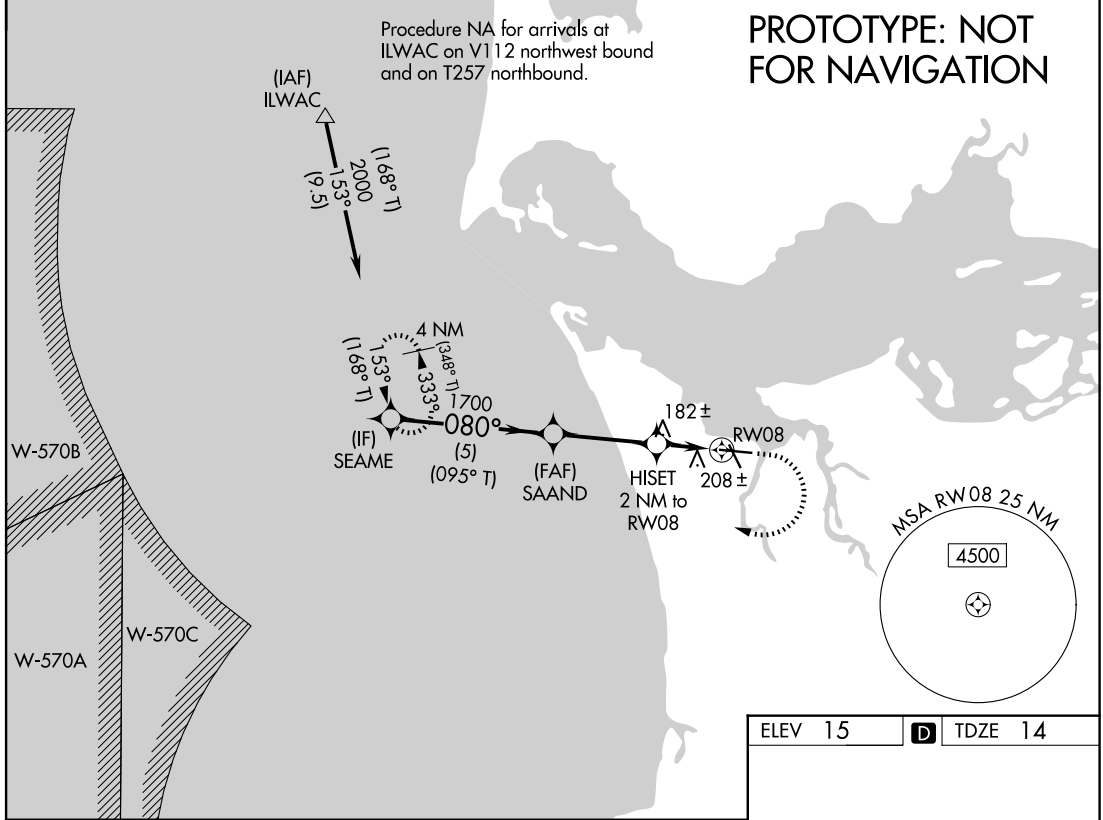
ASTORIA RGNL (AST)

RNP APCH - GPS.

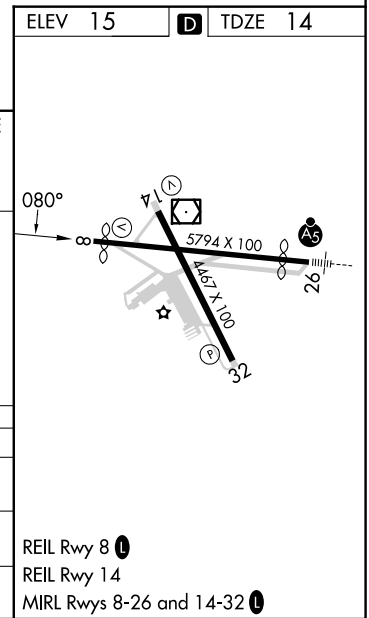
**⚠** Rwy 8 helicopter visibility reduction below 3/4 SM NA. Circling Rwy 14, 32 NA at night.

**⚠** MISSED APPROACH: (Do not exceed 225K until SEAME) Climb to 500, then climbing right turn to 2000 direct SEAME and hold.

ASOS <b>135.375</b>	SEATTLE CENTER <b>124.2 317.6</b>	UNICOM <b>122.8 (CTAF) 0</b>
------------------------	--------------------------------------	---------------------------------



CATEGORY	A	B	C	D
LP MDA	440-1	426 (500-1)	440-1 1/4	426 (500-1 1/4)
LNAV MDA	460-1	446 (500-1)	460-1 3/8	446 (500-1 3/8)
CIRCLING	660-1 645 (700-1)	820-1 805 (900-1)	1080-3 1065 (1100-3)	1160-3 1145 (1200-3)



ASTORIA, OREGON  
Amdt 1B FIG

46°09'N-123°53'W

# RNAV (GPS) RWY 8

AUTOMATED AL-24 RNAV (GPS) RWY 8

NW-1  
16 DEC 2025  
COMPILER: CG  
REVIEWER:  
DBL CHKR:  
EFF: FIG