

Flight Procedures Cover Page	Task Action: FLIGHT CHECK	Task Type: IAP	Estimated Chart Date: 03/19/2026	APWS Task ID: 503ED9910559431787951A6CF527A2AA	APWS Project ID: DBD84D6F02BD4DC88651F2683BAB259E
Procedure: LOC RWY 20 AMDT 2	Enroute: NO	Specialist: Kercher, Devon	Agreement Number:		
Airport ID: KPHF	Airport City: NEWPORT NEWS	State: VA			
Facility ID:	Facility Type:	Flight Inspection Remark Type: New FC Slot			

Procedure Comments:
 MOVED PANLE, RACOT, ROBOY.
 CHANGED TCH TO BE COINCIDENT WITH RUNWAY VGSI.
 CHANGED GPA TO 3.00 FROM 3.04.

 CONTACT ROBERT HAMILTON (AJV-A431) 405-954-4608.



LOC/DME I-FJQ 109.3 Chan 30	APP CRS 202°	Rwy Idg 6526 TDZE 42 Apt Elev 42
---	------------------------	---

LOC RWY 20

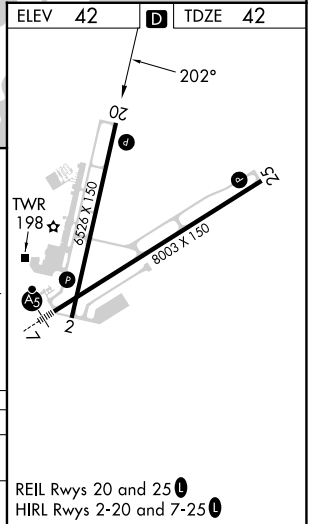
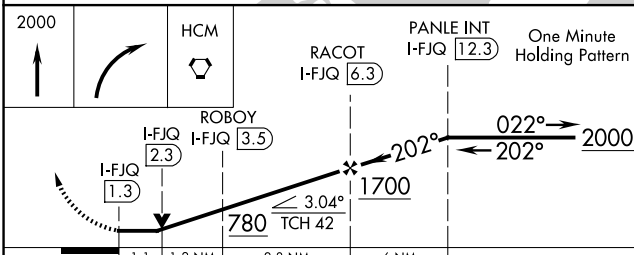
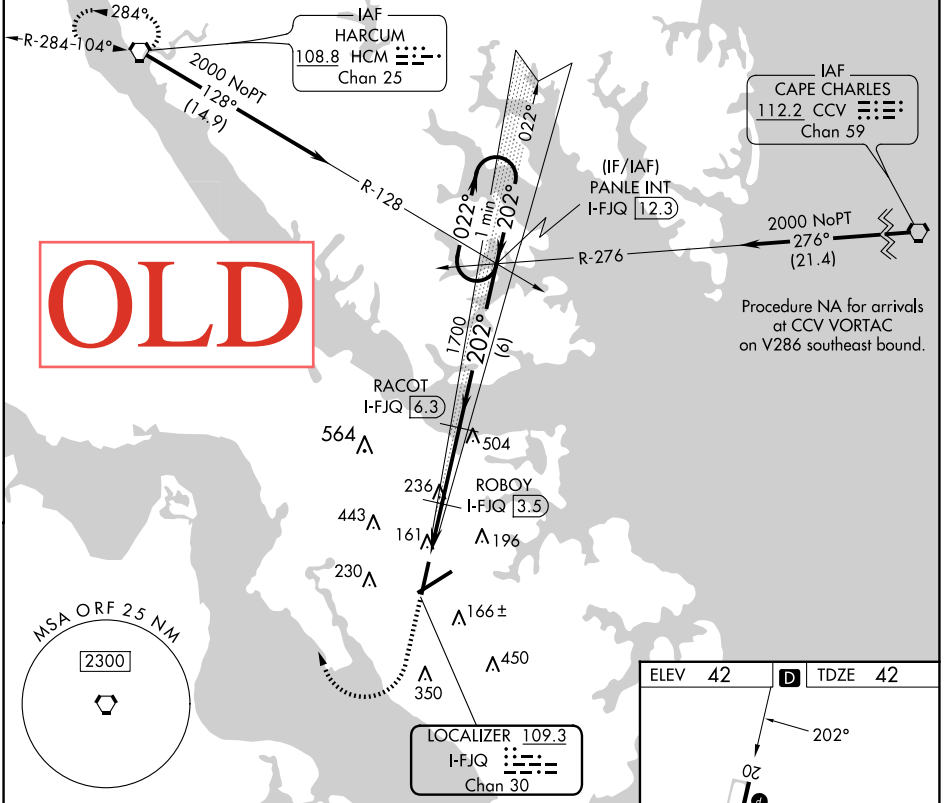
NEWPORT NEWS/WILLIAMSBURG INTL (PHF)

DME required.

▼ Rwy 20 helicopter visibility reduction below 3/4 SM NA.

MISSED APPROACH: Climb to 2000 then right turn direct HCM VORTAC and hold.

ATIS 128.65	NORFOLK APP CON 125.7 335.625	NEWPORT NEWS TOWER* 118.7 (CTAF) 257.9	GND CON 121.9 348.6	CLNC DEL 121.65 225.4	UNICOM 122.95
-----------------------	---	--	-------------------------------	---------------------------------	-------------------------



CATEGORY	A	B	C	D
S-20	420-1 378 (400-1)			
CIRCLING	520-1 478 (500-1)	540-1 498 (500-1)	760-2 718 (800-2)	780-2 1/4 738 (800-2 1/4)

NE-3, 04 SEP 2025 to 02 OCT 2025

NE-3, 04 SEP 2025 to 02 OCT 2025