

WAAS CH 40330 W28A	APP CRS 285°	Rwy Idg TDZE Apt Elev	5018 50 52
--	------------------------	-----------------------------	---------------------------------------

RNAV (GPS) RWY 28L

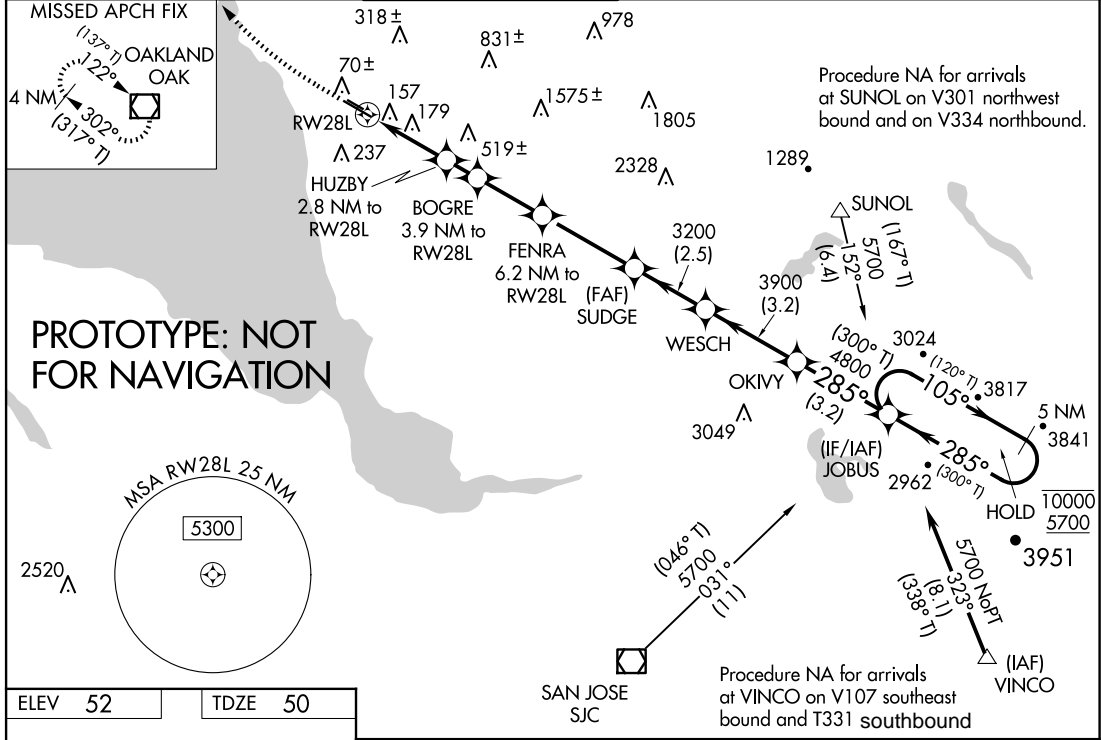
HAYWARD EXEC (HWD)

RNP APCH - GPS.

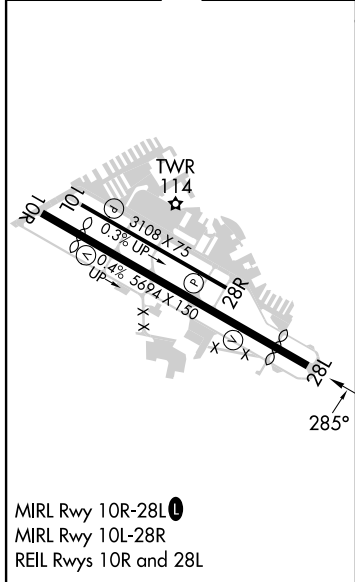
⚠ Baro-VNAV NA. Circling Rwy 10L, 28R NA at night. Rwy 28L Helicopter visibility reduction below 3/4 SM NA. When local altimeter setting not received, use OAK altimeter setting and increase LPV DA to 370 feet; increase LNAV/VNAV DA to 461 feet; increase all MDAs 40 feet, and LNAV visibility Cat C/D 1/4 SM and Circling visibility Cat D 1/4 SM. Circling NA north of Rwy 10L-28R.

⚠ MISSED APPROACH: Climb to 600 then climbing right turn to 2100 direct OAK VOR/DME and hold.

ATIS 126.7	NORCAL APP CON 124.4 351.8	HAYWARD TOWER ★ 120.2 (CTAF) 257.8	GND CON 121.4	CLNC DEL 128.05	UNICOM 122.95
----------------------	--------------------------------------	--	-------------------------	---------------------------	-------------------------



ELEV 52	TDZE 50
---------	---------



600	2100	OAK	VGSi and RNAV glidepath not coincident (VGSi Angle 4.00/TCH 35).		5 NM Holding Pattern
<p>WESCH OKIVY JOBUS</p> <p>FENRA SUDGE</p> <p>HUZBY BOGRE 6.2 NM to RW28L</p> <p>0.9 NM to RW28L</p> <p>2.8 NM to RW28L</p> <p>3.9 NM to RW28L</p> <p>3200</p> <p>3900 4800</p> <p>1000 1360 2120 3200</p> <p>GP 3.10° TCH 35</p>					
→ 0.9	1.9	1.1 NM	2.3 NM	3.3 NM	2.5 NM 3.2 NM 3.2 NM
CATEGORY	A		B		C D
LPV DA	348-1 298 (300-1)				
LNAV/VNAV DA	439-1 389 (400-1)				
LNAV MDA	460-1 410 (500-1)		460-1 410 (500-1)		
CIRCLING	540-1 488 (500-1)		540-1 488 (500-1)		920-2 868 (900-2)

AUTOMATED AL-5015 RNAV (GPS) RWY 28L

SW-2
7 NOV 2024
COMPILER: CG
REVIEWER:
DBL CHKR:
EFF: FIG