

WAAS CH <b>50503</b> <b>W22A</b>	APP CRS <b>216°</b>	Rwy Ldg <b>7659</b> TDZE <b>37</b> Apt Elev <b>41</b>
--	------------------------	---

# RNAV (GPS) RWY 22L

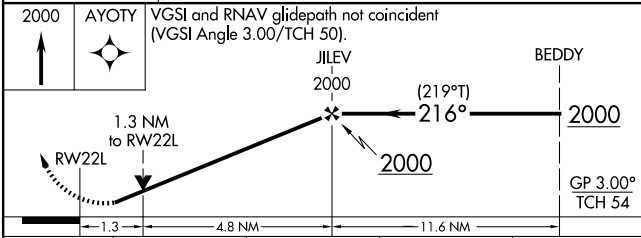
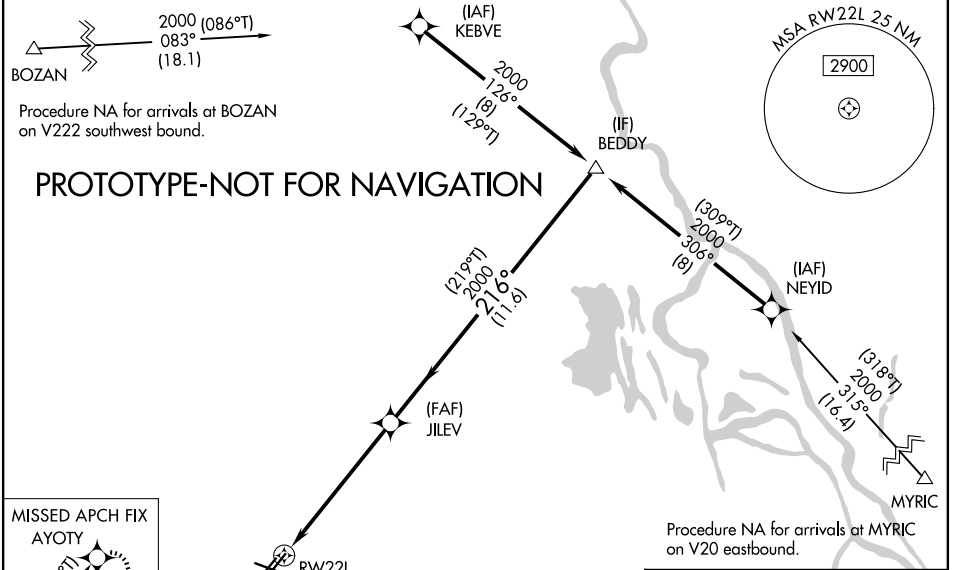
LAFAYETTE RGNL/PAUL FOURNET FLD (LFT)

RNP APCH - GPS.

**⚠** Baro-VNAV and VDP NA when using ARA altimeter setting. For uncompensated Baro-VNAV systems, LNAV/VNAV NA below -4°C or above 54°C. Rwy 22L helicopter visibility reduction below RVR 4000 NA. Circling Rwy 4L, 4R, 22R, and 11 NA at night. Inop table does not apply to LPV all Cats. When local altimeter setting not received, use ARA altimeter setting and increase LPV DA to 316 feet, increase LNAV/VNAV DA to 377 feet, increase all MDAs 40 feet and LNAV visibility Cat C/D to RVR 5000 and Circling visibility Cat D ¼ SM.

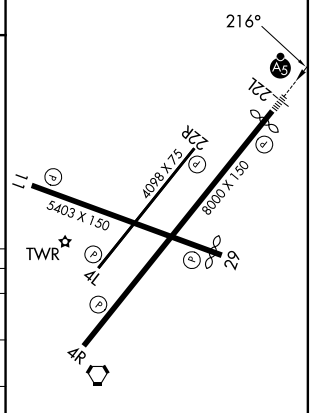
MALSRL MISSED APPROACH: Climb to 2000 direct AYOTY and hold.

ATIS <b>134.05</b>	LAFAYETTE APP CON ★ <b>121.1 363.0</b>	LAFAYETTE TOWER ★ <b>118.5 (CTAF) 0 257.8</b>	GND CON <b>121.8</b>	UNICOM <b>122.95</b>
-----------------------	---	--	-------------------------	-------------------------



ELEV 41	<b>D</b> TDZE 37
---------	------------------

CATEGORY	A	B	C	D
LPV DA		287/40	250 (300-¾)	
LNAV/VNAV DA		349/40	312 (400-¾)	
LNAV MDA	480/40	443 (500-¾)	480/45	443 (500-¾)
CIRCLING	540-1 499 (500-1)	580-1 539 (600-1)	700-1¾ 659 (700-1¾)	700-2 659 (700-2)



REIL Rwys 4L, 4R, 11, 22R and 29  
MIRL Rwy 11-29 and 4L-22R  
HIRL Rwy 4R-22L