

Flight Procedures Cover Page	Task Action: P-NOTAM	Task Type: IAP	Estimated Chart Date: 09/03/2026	APWS Task ID: 523F6CEEB4A74DD4BF2511F0EA471200	APWS Project ID: 499EE682AA8548CDB6EA6C57DB0BC0E3
Procedure: RNAV (GPS) RWY 36 AMDT 1C		Enroute: NO	Specialist: Johnson, Timothy		Agreement Number:
Airport ID: KGGG			Airport City: LONGVIEW		State: TX
Facility ID:	Facility Type:	Flight Inspection Remark Type:			

Procedure Comments:

Visibility Initiative (Garmin) - Update IAP visibility minimums IAW Order 8260.3, Chapter 3, Section 3-3. Visibility Minimums.

PROCESSED IAW TECHNICAL SUPPORT GROUP (AJF-17) MEMO DATED 07/07/2021, SUBJECT: GUIDANCE FOR PROCEDURAL CHANGES REQUIRING FLIGHT INSPECTION/VALIDATION.

CONTACT: CASEY HILL (405) 954-0624.

QUALITY
6 SN 3/18/26
CHECKED

QUALITY
41
CHECKED

APP CRS 356°	Rwy Ldg 6109
	TDZE 365
	Apt Elev 366

RNAV (GPS) RWY 36

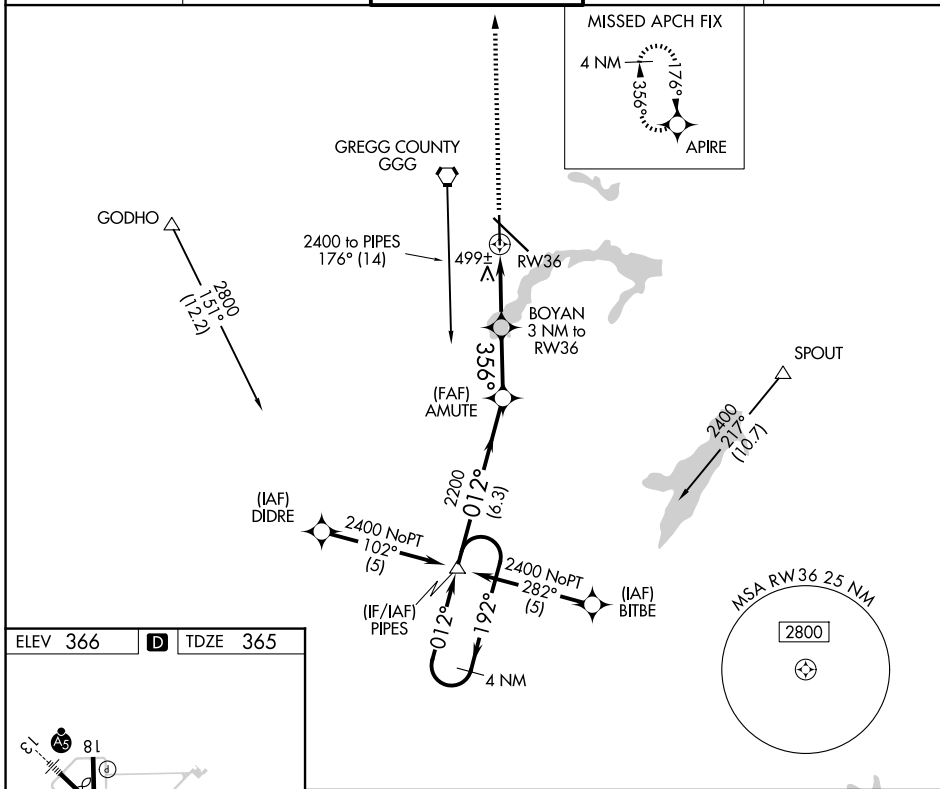
EAST TEXAS RGNL (GGG)

RNP APCH - GPS.

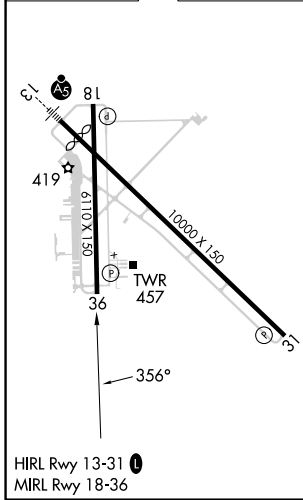
▼ Rwy 36 helicopter visibility reduction below 3/4 SM NA. When local altimeter setting not received, use Gilmer altimeter setting and increase all MDA 60 feet and LNAV and Circling Cats C/D visibility 1/4 SM.

MISSED APPROACH: Climb to 2600 direct APIRE and hold.

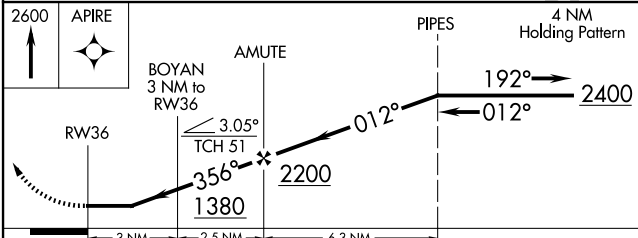
ATIS 119.65	LONGVIEW APP CON * 124.675 257.975	EASTEX TOWER * 119.2 (CTAF) 0377.05	GND CON 121.6	UNICOM 122.95
-----------------------	--	---	-------------------------	-------------------------



ELEV 366	D	TDZE 365
----------	----------	----------



LONGVIEW, TEXAS
Amdt 1B 16MAY24



CATEGORY	A	B	C	D
LNAV MDA	760-1 395 (400-1)			760-1 1/4 395 (400-1 1/4)
CIRCLING	860-1 494 (500-1)		980-1 3/4 614 (700-1 1/4)	1080-2 1/4 714 (800-2 1/4)