

FEDERAL AVIATION ADMINISTRATION
 FLIGHT STANDARDS SERVICE
 STANDARD TERMINAL ARRIVAL (STAR)

Bearings, headings, courses, tracks and radials are magnetic. Elevations and altitudes are in feet, MSL. Altitudes are minimum altitudes unless otherwise indicated.
 Ceilings are in feet above airport elevation. Distances are in nautical miles. Visibilities are in statute miles or feet RVR unless otherwise indicated.

Arrival Name SCRLT (RNAV)	Number THREE	STAR Computer Code SCRLT.SCRLT3	Superseded Number TWO	Dated 12/26/2024	Effective Date
-------------------------------------	------------------------	---	---------------------------------	----------------------------	----------------

TRANSITION ROUTES:

Transition Name	Transition Computer Codes	From FIX/NAVAID	To FIX/NAVAID	Course	Distance	MEA	MOCA	MAA	Crossing Altitudes / Fixes
HACKS	HACKS.SCRLT3	HACKS	HACKS						
			SCRLT	298.32	62.70	7000	3500		BETWEEN 11000 AND FL180
MCGNS	MCGNS.SCRLT3	MCGNS	MCGNS						
			ZEDNO	358.68	36.58	7000	3200		
			SCRLT	358.61	25.00	7000	2800		BETWEEN 11000 AND FL180

ARRIVAL ROUTE DESCRIPTION:

CMH: FROM SCRLT ON TRACK 330.27/8.24 TO CROSS FANNS AT OR ABOVE 9000, THEN ON TRACK 331.45/7.50 TO BRTUS.

LANDING CMH RWY 10L/R: FROM BRTUS ON TRACK 314.78/8.42 TO CROSS OHECH AT OR BELOW 7000, THEN ON TRACK 314.91/10.16 TO RIMEE, THEN ON TRACK 281.04/3.00 TO CROSS SLATS AT 6000 AND AT OR BELOW 210 KIAS, THEN ON TRACK 281.04. EXPECT RADAR VECTORS TO FINAL APPROACH COURSE.

LANDING CMH RWY 28L: FROM BRTUS ON TRACK 332.90/7.11 TO EYEOH, THEN ON TRACK 002.35/5.61 TO CROSS XAVYR AT 5000 AND AT OR BELOW 210 KIAS, THEN ON TRACK 000.00. EXPECT RADAR VECTORS FOR ILS OR LOC RWY 28L APPROACH.

LANDING CMH RWY 28R: FROM BRTUS ON TRACK 332.90/7.11 TO EYEOH, THEN ON TRACK 000.44/6.22 TO CROSS WERUP AT 5000 AND AT OR BELOW 210 KIAS, THEN ON TRACK 000.44. EXPECT RADAR VECTORS FOR ILS OR LOC RWY 28R APPROACH.

LANDING TZR/LCK: FROM SCRLT ON TRACK 330.36/6.17 TO GRYYY, THEN ON TRACK 282.69/7.57 TO CROSS JOSIK AT 9000, THEN ON TRACK 272.87. EXPECT RADAR VECTORS TO FINAL APPROACH COURSE.

LANDING OSU: FROM SCRLT ON TRACK 330.03/10.89 TO CROSS MSKOT AT 11000, THEN ON TRACK 329.94/5.00 TO NOPLC, THEN ON TRACK 276.81/8.25 TO CROSS LKHOM AT 11000, THEN ON TRACK 276.81. EXPECT RADAR VECTORS TO FINAL APPROACH COURSE.

PBN REQUIREMENT NOTES:

RNAV 1 - DME/DME/IRU OR GPS

EQUIPMENT REQUIREMENT NOTES:

RADAR REQUIRED

PROCEDURAL DATA NOTES:

NOTE: CMH AIRCRAFT LANDING EAST EXPECT RWY 10R

NOTE: CMH AIRCRAFT LANDING WEST EXPECT RWY 28L

FIXES AND/OR HOLDING PATTERNS:

CHART HOLDING AT SCRLT: HOLD S, LT, 358.65 INBOUND, 10 NM LEGS.

CHART HOLDING AT ZEDNO: HOLD S, LT, 358.65 INBOUND, 10 NM LEGS.

COMMUNICATIONS:



FEDERAL AVIATION ADMINISTRATION
 FLIGHT STANDARDS SERVICE
 STANDARD TERMINAL ARRIVAL (STAR)

Bearings, headings, courses, tracks and radials are magnetic. Elevations and altitudes are in feet, MSL. Altitudes are minimum altitudes unless otherwise indicated.
 Ceilings are in feet above airport elevation. Distances are in nautical miles. Visibilities are in statute miles or feet RVR unless otherwise indicated.

Arrival Name	Number	STAR Computer Code	Superseded Number	Dated	Effective Date
SCRLT (RNAV)	THREE	SCRLT.SCRLT3	TWO	12/26/2024	

AIRPORTS SERVED:

<u>AIRPORT ID</u>	<u>CITY</u>	<u>STATE</u>
CMH	COLUMBUS	OH
TZR	COLUMBUS	OH
OSU	COLUMBUS	OH
LCK	COLUMBUS	OH

LOST COMMUNICATIONS PREFERENCES:

REMARKS:

ADDITIONAL FLIGHT DATA:

DME/DME ASSESSMENT: SAT (RNP 2.0)
 MAG VAR: CMH 07W/2015
 CHART AT WERUP TERMINUS: CMH LDG RWY 28R
 CHART AT SLATS TERMINUS: CMH LDG RWY 10L/R
 CHART AT XAVYR TERMINUS: CMH LDG RWY 28L
 CHART AT JOSIK TERMINUS: LDG LCK AND TZR
 CHART AT LKHOM TERMINUS: LDG OSU

FLIGHT INSPECTED BY:

ORGANIZATION: **DATE:**

Flight Inspected Signature: _____

DEVELOPED BY:

MARK CIARLONE

AJV-A421 03/26/2026

Digitally signed by
 Developed By Signature: **MARK CIARLONE**
 Mar 26, 2026

APPROVED BY:

KYLE THOMPSON

AJV-A33

Approved By Signature: _____

CHANGES:

1. TRANSITION ROUTES: SEGMENT ZEDNO-SCRLT MOCA RAISED FROM 2500 TO 2800.
2. TRANSITION ROUTES: SCRLT BLOCK ALTITUDE RESTRICTION CHANGED FROM BETWEEN 10000 AND 17000 TO BETWEEN 11000 AND 18000.
3. ARRIVAL ROUTE DESCRIPTION: CMH COMMON ROUTE CHANGED FROM SCRLT-BRTUS TO SCRLTT-FANNS-BRTUS.
4. ARRIVAL ROUTE DESCRIPTION: LANDING CMH RWY 10L/R: SLATS SPEED RESTRICTION CHANGED FROM AT 210 KIAS TO AT OR BELOW 210 KIAS, AND DISTANCE FROM BRTUS TO OHECH CHANGED FROM 8.43 NM TO 8.42 NM.
5. ARRIVAL ROUTE DESCRIPTION: LANDING CMH RWY 28L: XAVYR SPEED RESTRICTION CHANGED FROM AT 210 KIAS TO AT OR BELOW 210 KIAS.
6. ARRIVAL ROUTE DESCRIPTION: LANDING CMH RWY 28R TRANSITION: WERUP SPEED RESTRICTION CHANGED FROM AT 210 KIAS TO AT OR BELOW 210 KIAS.



FEDERAL AVIATION ADMINISTRATION
 FLIGHT STANDARDS SERVICE
 STANDARD TERMINAL ARRIVAL (STAR)

Bearings, headings, courses, tracks and radials are magnetic. Elevations and altitudes are in feet, MSL. Altitudes are minimum altitudes unless otherwise indicated.
 Ceilings are in feet above airport elevation. Distances are in nautical miles. Visibilities are in statute miles or feet RVR unless otherwise indicated.

Arrival Name	Number	STAR Computer Code	Superseded Number	Dated	Effective Date
SCRLT (RNAV)	THREE	SCRLT.SCRLT3	TWO	12/26/2024	

- 7. ARRIVAL ROUTE DESCRIPTION: TZR/LCK TRANSITION: ROUTE CHANGED FROM SCRLT-MLORA-JOSIK TO SCRLT-GRYYY-JOSIK.
- 8. ARRIVAL ROUTE DESCRIPTION: OSU TRANSITION: ROUTE CHANGED FROM SCRLT-WONIK-JONPA-PAEON TO SCRLT-MSKOT-NOPLC-LKHOM.
- 9. ADDED FIXES FANNS, GRYYY, LKHOM, MSKOT AND NOPLC; CANCELLED FIXES JONPA, MLORA, PAEON AND WONIK.
- 10. REMARKS: REMOVED LDG LCK/TZR OVER-RIDE TAILWIND COMPONENT 26.28; AT FIX SCRLT IS 47.12.
- 11. ADDITIONAL FLIGHT DATA: REPLACED CHART AT PAEON TERMINUS: LDG OSU WITH CHART AT LKHOM TERMINUS: LDG OSU.

REASONS:

- 1-3. ATC-REQUESTED FOR STAR/TRAFFIC DECONFLICTION.
- 4. ATC-REQUESTED FOR STAR/TRAFFIC DECONFLICTION; THE DECIMAL DISTANCE CHANGE IS A NEW TGTS CALCULATION - NEITHER FIX MOVED.
- 5-9. ATC-REQUESTED FOR STAR/TRAFFIC DECONFLICTION.
- 10. OUTDATED.
- 11. ATC-REQUESTED FOR STAR/TRAFFIC DECONFLICTION.

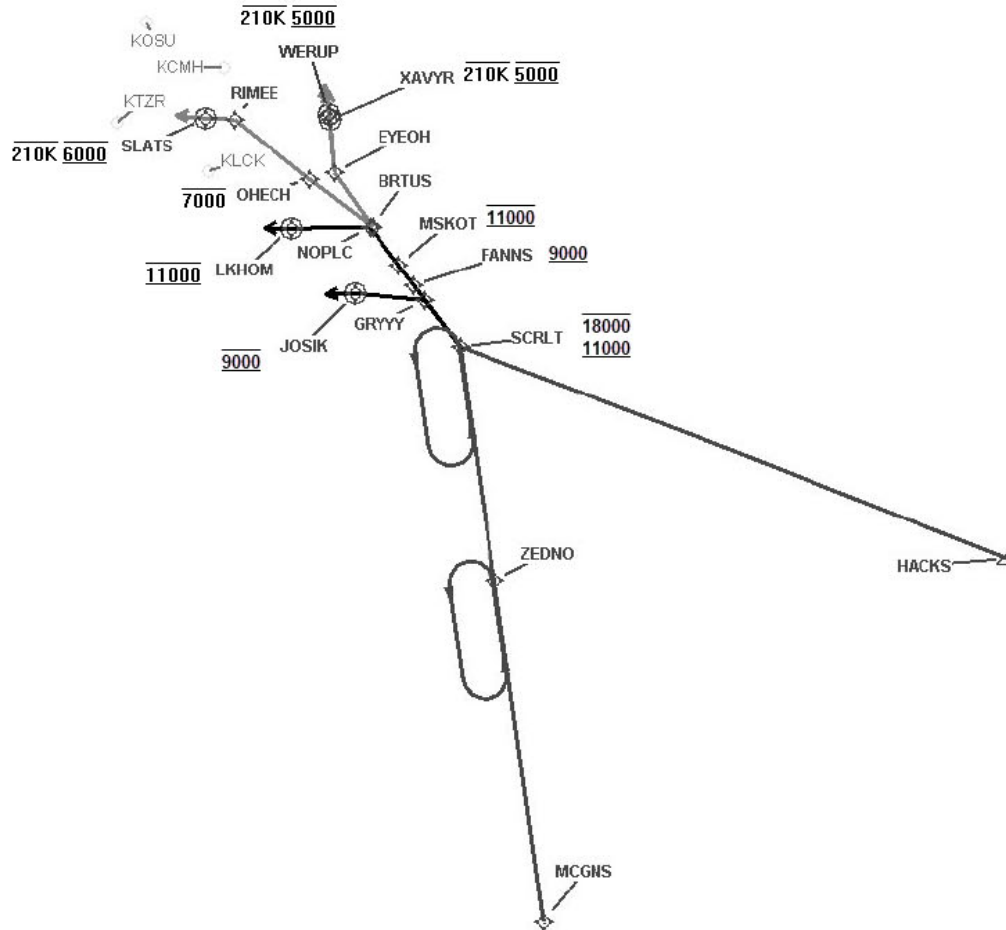


FEDERAL AVIATION ADMINISTRATION
 FLIGHT STANDARDS SERVICE
 STANDARD TERMINAL ARRIVAL (STAR)

Bearings, headings, courses, tracks and radials are magnetic. Elevations and altitudes are in feet, MSL. Altitudes are minimum altitudes unless otherwise indicated.
 Ceilings are in feet above airport elevation. Distances are in nautical miles. Visibilities are in statute miles or feet RVR unless otherwise indicated.

Arrival Name	Number	STAR Computer Code	Superseded Number	Dated	Effective Date
SCRLT (RNAV)	THREE	SCRLT.SCRLT3	TWO	12/26/2024	

Graphic Depiction 1



FEDERAL AVIATION ADMINISTRATION
 FLIGHT STANDARDS SERVICE
 STAR (DATA RECORD)

Arrival Name SCRLT (RNAV)	Number THREE	STAR Computer Code SCRLT.SCRLT3		Superseded Number TWO		Dated 12/26/2024	Effective Date		
<u>FIX/NAVAID</u>	<u>LAT/LONG</u>	<u>C</u>	<u>FO/FB</u>	<u>LEG TYPE</u>	<u>TC</u>	<u>DIST (NM)</u>	<u>ALTITUDE</u>	<u>SPEED</u>	<u>REMARKS</u>
En Route Transition									
HACKS	390745.89N / 0810534.90W	Y		IF					HACKS.SCRLT3
SCRLT	393010.49N / 0822103.02W	Y	FB	TF	291.32	62.70	11000BFL180		
En Route Transition									
MCGNS	382911.54N / 0820932.63W	Y		IF					MCGNS.SCRLT3
ZEDNO	390525.31N / 0821620.36W	Y	FB	TF	351.68	36.58			
SCRLT	393010.49N / 0822103.02W	Y	FB	TF	351.61	25.00	11000BFL180		
Common Route									
SCRLT	393010.49N / 0822103.02W	Y		IF			11000BFL180		SCRLT.SCRLT3
FANNS	393646.67N / 0822725.40W	Y	FB	TF	323.27	08.24	AT/ABOVE 9000		
BRTUS	394252.97N / 0823304.44W	Y	FB	TF	324.45	07.50			
Common Route									
SCRLT	393010.49N / 0822103.02W	Y		IF			11000BFL180		SCRLT.SCRLT3
GRYYY	393507.76N / 0822548.86W	Y	FB	TF	323.36	06.17			
JOSIK	393552.45N / 0823533.48W	Y	FO	TF	275.69	07.57	AT 9000		
KLCK,KTZR				FM	265.87				
Common Route									
SCRLT	393010.49N / 0822103.02W	Y		IF			11000BFL180		SCRLT.SCRLT3
MSKOT	393852.64N / 0822931.67W	Y	FB	TF	323.03	10.89	AT 11000		
NOPLC	394252.18N / 0823325.94W	Y	FB	TF	322.94	05.00			
LKHOM	394250.03N / 0824407.65W	Y	FO	TF	269.81	08.25	AT 11000		
KOSU				FM	269.81				
Runway Transition									
BRTUS	394252.97N / 0823304.44W	Y		IF					
OHECH	394802.59N / 0824142.82W	Y	FB	TF	307.78	08.42	AT/BELOW 7000		



FEDERAL AVIATION ADMINISTRATION
 FLIGHT STANDARDS SERVICE
 STAR (DATA RECORD)

Arrival Name SCRLT (RNAV)	Number THREE	STAR Computer Code SCRLT.SCRLT3		Superseded Number TWO		Dated 12/26/2024	Effective Date		
<u>FIX/NAVAID</u>	<u>LAT/LONG</u>	<u>C</u>	<u>FO/FB</u>	<u>LEG TYPE</u>	<u>TC</u>	<u>DIST (NM)</u>	<u>ALTITUDE</u>	<u>SPEED</u>	<u>REMARKS</u>
RIMEE	395416.92N / 0825207.66W	Y	FB	TF	307.91	10.16			
SLATS	395429.55N / 0825600.99W	Y	FO	TF	274.04	03.00	AT 6000	AT/BELOW 210K	
KCMH:RWY 10L,RWY 10R				FM	274.04				
Runway Transition									
BRTUS	394252.97N / 0823304.44W	Y		IF					
EYEOH	394846.48N / 0823814.94W	Y	FB	TF	325.90	07.11			
XAVYR	395422.19N / 0823850.37W	Y	FO	TF	355.35	05.61	AT 5000	AT/BELOW 210K	
KCMH:RWY 28L				FM	353.00				
Runway Transition									
BRTUS	394252.97N / 0823304.44W	Y		IF					
EYEOH	394846.48N / 0823814.94W	Y	FB	TF	325.90	07.11			
WERUP	395457.47N / 0823910.36W	Y	FO	TF	353.44	06.22	AT 5000	AT/BELOW 210K	
KCMH:RWY 28R				FM	353.44				

