

Flight Procedures Cover Page	Task Action: P-NOTAM	Task Type: IAP	Estimated Chart Date: 07/09/2026	APWS Task ID: 544D5BBEB89D48BC8A793E1C0A9A8665	APWS Project ID: 791F07FA637E4C05BBB9E9A2F75000D7
Procedure: ILS or LOC RWY 34 ORIG-G		Enroute: NO	Specialist: Johnson, Timothy		Agreement Number:
Airport ID: KHYS			Airport City: HAYS		State: KS
Facility ID: HYS	Facility Type: ILS	Flight Inspection Remark Type:			

Procedure Comments:

Visibility Initiative (Garmin) - Update IAP visibility minimums IAW Order 8260.3, Chapter 3, Section 3-3. Visibility Minimums.

PROCESSED IAW TECHNICAL SUPPORT GROUP (AJF-17) MEMO DATED 07/07/2021, SUBJECT: GUIDANCE FOR PROCEDURAL CHANGES REQUIRING FLIGHT INSPECTION/VALIDATION.

CONTACT: CASEY HILL (405) 954-0624.

QUALITY
6 SN 3/23/26
CHECKED

QUALITY
38
CHECKED

OLD

LOC I-HYS 111.5	APP CRS 339°	Rwy Ldg TDZE Apt Elev	6501 1994 1999
---------------------------	------------------------	-----------------------------	---

ILS or LOC RWY 34

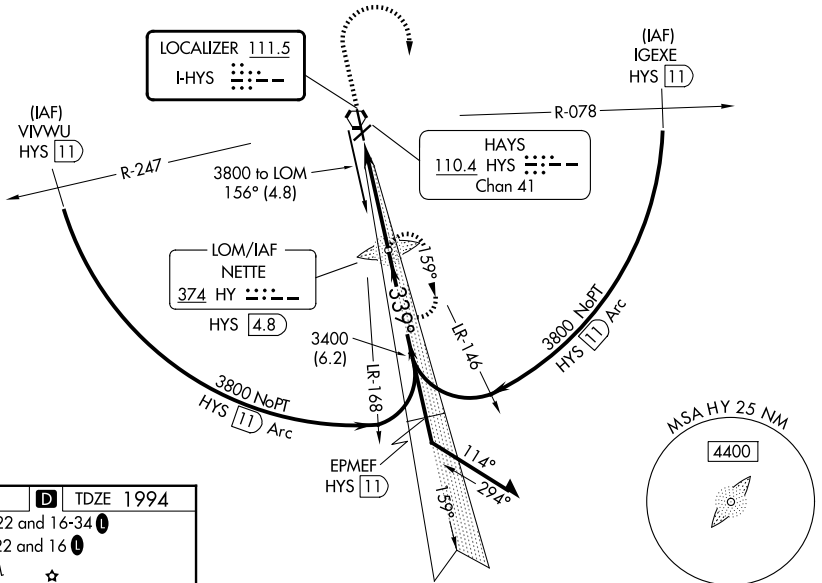
HAYS RGNL (HYS)

NA ADF required. Circling NA for Cat D northwest of Rwy 4 and west of Rwy 16. When local altimeter setting not received, use Russell altimeter setting: increase DA to 2263 feet; increase all MDA 80 feet and visibility S-LOC 34 Cat C and Circling Cat C and D ¼ SM. For inoperative MALSRS when using Russell altimeter setting, increase S-ILS all Cats visibility to 1.

MALSRS
MISSED APPROACH: Climb to 2600 then climbing right turn to 3800 direct NETTE LOM/HYS 4.8 DME and hold.

AWOS-3PT 125.525	KANSAS CITY CENTER 124.4 322.4	UNICOM 122.8 (CTAF)
----------------------------	--	-------------------------------

ADF or DME REQUIRED



ELEV 1999 **D** TDZE 1994

MIRL Rwy 4-22 and 16-34 **(1)**

REIL Rwy 4, 22 and 16 **(1)**

FAF to MAP 4.1 NM

Knots	60	90	120	150	180
Min:Sec	4:06	2:44	2:03	1:38	1:22

2600	3800	HY	VGSI and ILS glidepath not coincident (VGSI Angle 3.00/TCH 43).	
↑	↷		Remain within 10 NM	
HYS VORTAC	HYS	HY NETTE LOM	3343	
HYS (0.8)	HYS (4.8)	HYS (4.8)	3800	
4.1 NM		339°	3400	
		159°	GS 3.00° TCH 45	
CATEGORY	A	B	C	D
S-ILS 34	2194-½		200 (200-½)	
S-LOC 34	2340-½		346 (400-½)	2340-¾ 346 (400-¾)
CIRCLING	2480-1	481 (500-1)	2560-1½ 561 (600-1½)	2680-2¼ 681 (700-2¼)

NC-2, 19 MAR 2026 to 16 APR 2026

NC-2, 19 MAR 2026 to 16 APR 2026