

Flight Procedures Cover Page	Task Action: FLIGHT CHECK	Task Type: IAP	Estimated Chart Date: 05/14/2026	APWS Task ID: 55D1C68029CD4A2A87C06017ACC45B71	APWS Project ID: AA3BB4933A8E464CBA9524067FFA95D8
Procedure: RNAV (GPS) Z RWY 14 AMDT 2		Enroute: NO	Specialist: Bruce, Richard		Agreement Number:
Airport ID: 1B9			Airport City: MANSFIELD		State: MA
Facility ID:	Facility Type:	Flight Inspection Remark Type: New FC Slot			

Procedure Comments:

LOWERED LNAV/VNAV MINIMUMS AND RESTORED NIGHT OPS TO RWY 32.

ACTIVE DATA USED FOR 1B9 AIRPORT AND RUNWAYS.

CONTACT RAKE MCGRAW, AJV-A422, (405) 954-8711.



WAAS CH 90444 W14A	APP CRS 139°	Rwy Ldg TDZE Apt Elev	2991 121 123
--	------------------------	-----------------------------	---

RNAV (GPS) Z RWY 14

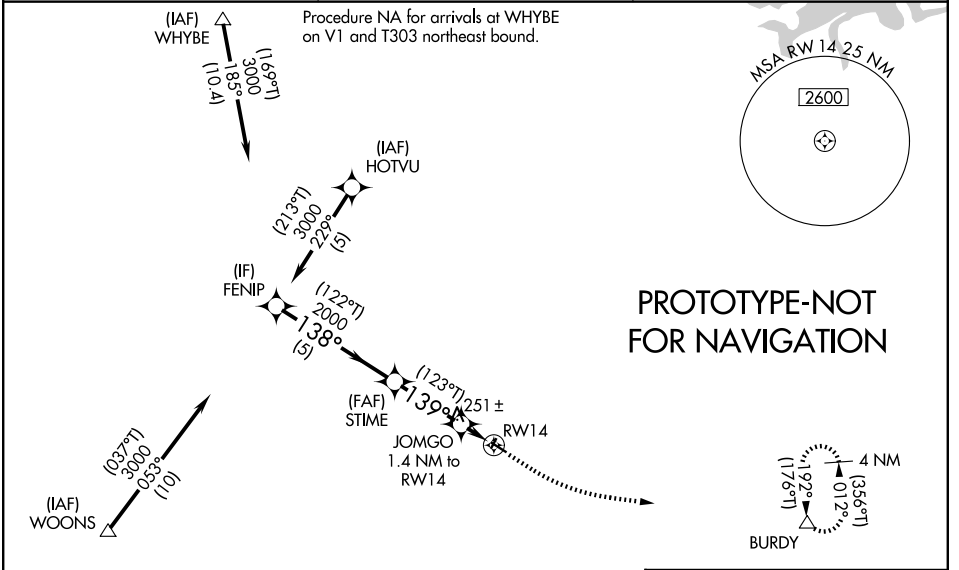
MANSFIELD MUNI (1B9)

RNP APCH - GPS.

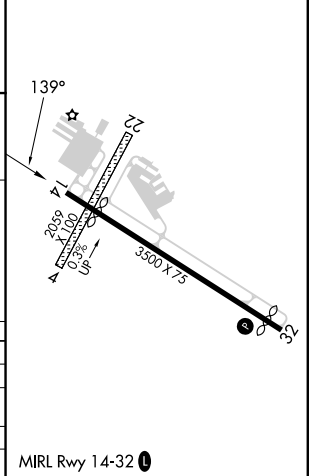
▼ Circling NA to Rwy 4 and 22. Rwy 14 helicopter visibility reduction below 1 SM NA.
 ▲ For uncompensated Baro-VNAV systems, LNAV/VNAV NA below -15°C or above 54°C. Baro-VNAV NA when using OWD altimeter setting. When local altimeter setting not received, use OWD altimeter setting: increase LPV DA to 523 feet and all visibilities 1/8 SM; increase LNAV/VNAV DA to 557 feet and all visibilities 1/8 SM; increase all MDAs 40 feet. Straight-in and circling Rwy 14 NA at night.

MISSED APPROACH:
 Climb to 700 then climbing left turn to 2000 direct BURDY and hold.

AWOS-3PT 118.675	BOSTON APP CON 124.1	UNICOM 123.0 (CTAF) 0
----------------------------	--------------------------------	---------------------------------



ELEV 123	TDZE 121
----------	----------



	700		2000		BURDY
	3000		2000		
GP 4.10° TCH 60	5 NM		2.8 NM		1.4 NM

CATEGORY	A	B	C	D
LPV DA	486-1	365 (400-1)		NA
LNAV/VNAV DA	520-1 1/8	399 (400-1 1/8)		NA
LNAV MDA	520-1	399 (400-1)		NA
CIRCLING	600-1	477 (500-1)		NA

WAAS CH 90444 W14A	APP CRS 139°	Rwy Ldg TDZE Apt Elev	2991 121 123
--	------------------------	-----------------------------	---

OLD

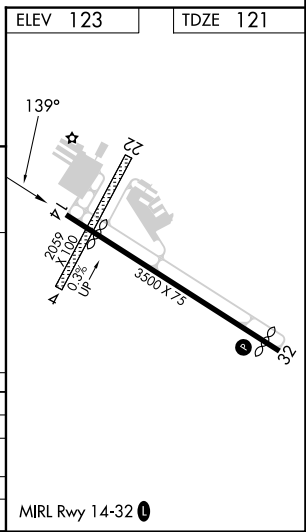
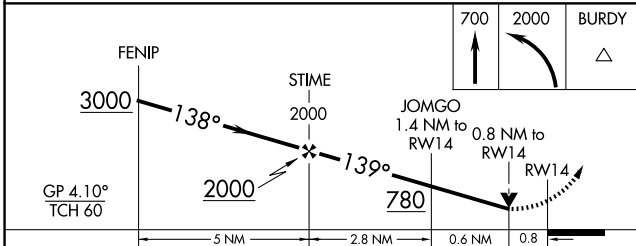
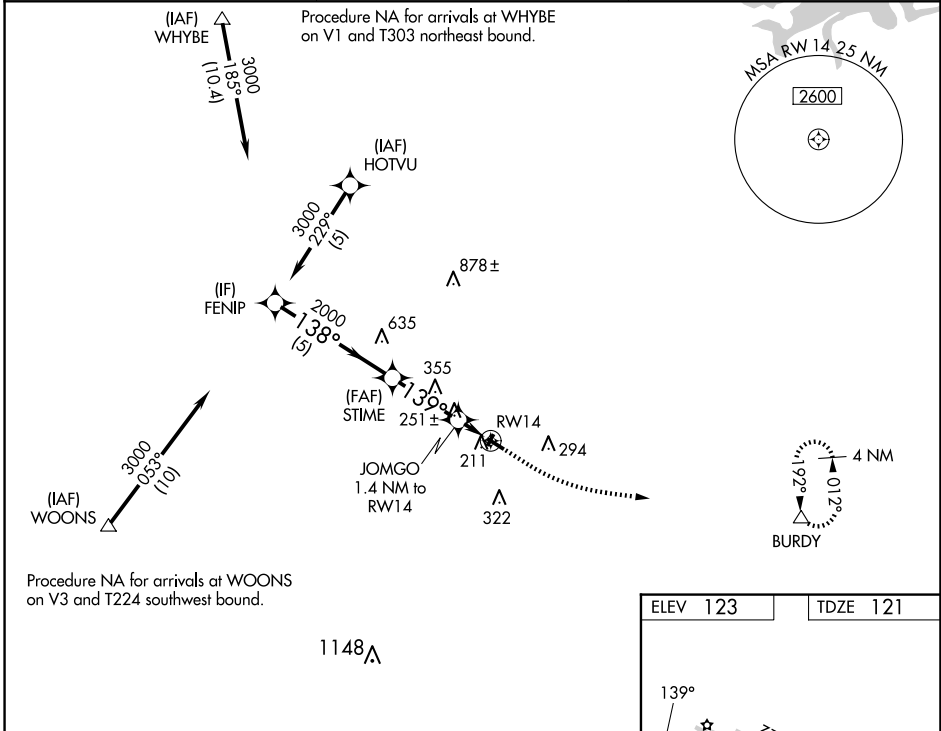
RNAV (GPS) Z RWY 14
MANSFIELD MUNI (1B9)

RNP APCH - GPS.

▼ Circling NA to Rwys 4 and 22. Rwy 14 helicopter visibility reduction below 3/4 SM NA.
 ▲ For uncompensated Baro-VNAV systems, LNAV/VNAV NA below -15°C or above 54°C. Baro-VNAV and VDP NA when using OWD altimeter setting. Procedure NA at night. When local altimeter setting not received, use OWD altimeter setting: increase LPV DA to 553 feet and all visibilities 1/8 SM, increase LNAV/VNAV DA to 566 feet and all visibilities 1/4 SM, and increase all MDAs 40 feet.

MISSED APPROACH: Climb to 700 then climbing left turn to 2000 direct BURDY and hold.

AWOS-3PT 118.675	BOSTON APP CON 124.1	UNICOM 123.0 (CTAF)
----------------------------	--------------------------------	-------------------------------



CATEGORY	A	B	C	D
LPV DA	486-1	365 (400-1)		NA
LNAV/VNAV DA	529-1 1/8	408 (500-1 1/8)		NA
LNAV MDA	520-1	399 (400-1)		NA
C CIRCLING	600-1	477 (500-1)		NA

NE-1, 30 OCT 2025 to 27 NOV 2025

NE-1, 30 OCT 2025 to 27 NOV 2025