

Flight Procedures Cover Page	Task Action: FLIGHT CHECK	Task Type: IAP	Estimated Chart Date: 01/22/2026	APWS Task ID: 55EEFDD8C781480B9C25CC3C9581D643	APWS Project ID: 8C7B645C17634DDF83E04E82657CE2E2
Procedure: RNAV (GPS) RWY 32 AMDT 0A		Enroute: NO	Specialist: Dunn, Timothy		Agreement Number:
Airport ID: 51D			Airport City: EDGELEY		State: ND
Facility ID:	Facility Type:	Flight Inspection Remark Type: New FC Slot			

Procedure Comments:  
 Cancels NOTAM !FDC 5/7518.  
 Active data used for K51D airport/runways.  
 Contact Kyle Thompson 405-954-2135.

QUALITY  
9  
CHECKED  
BEGUE

QUALITY  
13  
CHECKED



WAAS CH <b>45936</b> <b>W32A</b>	APP CRS <b>324°</b>	Rwy Ldg TDZE Apt Elev	<b>3600</b> <b>1600</b> <b>1604</b>
--	------------------------	-----------------------------	---

# RNAV (GPS) RWY 32

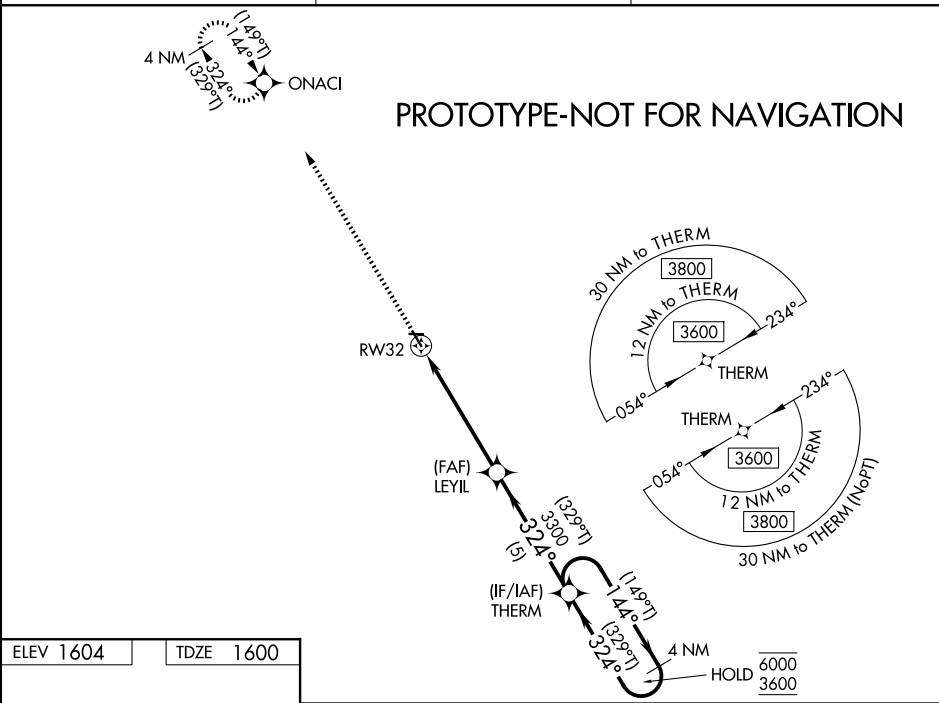
EDGELEY MUNI (51D)

RNP APCH - GPS.

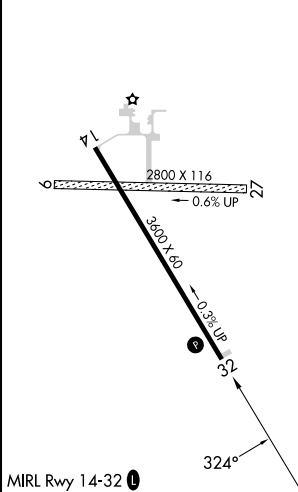
**▼** Procedure NA at night. Baro-VNAV NA. Rwy 32 helicopter visibility reduction below 1 SM NA. Circling NA to Rwy 9 and 27. Use JMS altimeter setting; when not received, use 2D5 altimeter setting and increase LPV DA to 1906 feet. Increase LNAV/VNAV DA to 1956 feet. Increase all MDAs 20 feet.

**MISSED APPROACH:**  
Climb to 3600 direct ONACI and hold.

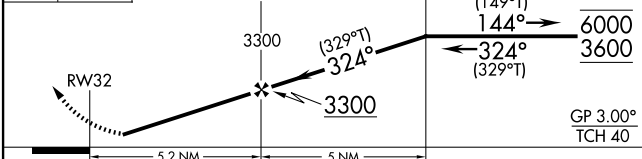
JMS ASOS <b>118.425</b>	MINNEAPOLIS CENTER <b>124.2 270.3</b>	UNICOM <b>122.8 (CTAF) 0</b>
----------------------------	--	---------------------------------



ELEV 1604	TDZE 1600
-----------	-----------



3600 ONACI VGSI and RNAV glidepath not coincident (VGSI Angle 3.00/TCH 27).



CATEGORY	A	B	C	D
LPV DA	1895-1	295 (300-1)		NA
LNAV/VNAV DA	1945-1½	345 (400-1½)		NA
LNAV MDA	2140-1	540 (600-1)		NA
CIRCLING	2220-1	616 (700-1)		NA

WAAS CH <b>45936</b> <b>W32A</b>	APP CRS <b>324°</b>	Rwy Ldg TDZE Apt Elev	<b>3600</b> <b>1600</b> <b>1604</b>
--	------------------------	-----------------------------	---

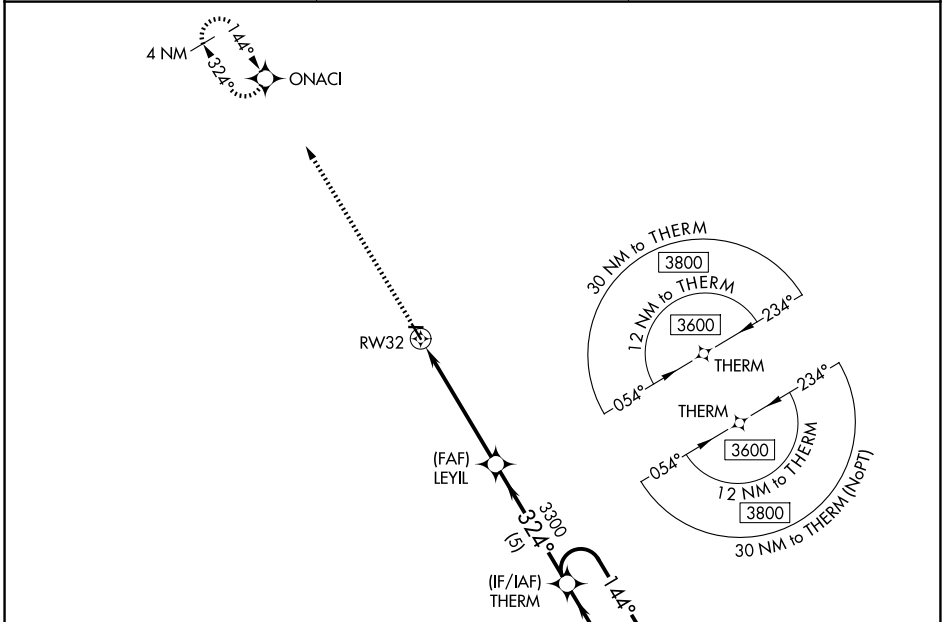
# RNAV (GPS) RWY 32

EDGELEY MUNI (51D)

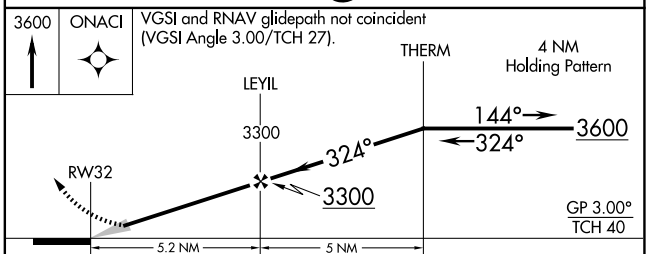
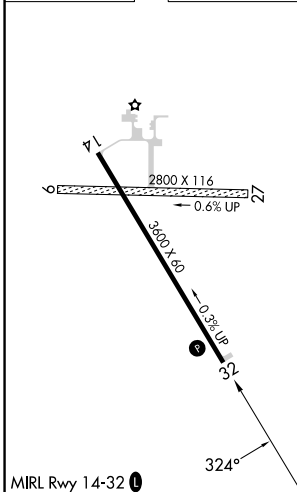
**Baro-VNAV NA.** Use Jamestown altimeter setting; when not received, use Oakes altimeter setting and increase all DA 10 feet and all MDA 20 feet; increase LNAV/VNAV all Cats visibility 1/8 mile. DME/DME RNP-0.3 NA. Procedure NA at night. Circling NA to Rwy 9 and 27.

**MISSED APPROACH:** Climb to 3600 direct ONACI and hold.

JMS ASOS <b>118.425</b>	MINNEAPOLIS CENTER <b>124.2 270.3</b>	UNICOM <b>122.8 (CTAF) 0</b>
----------------------------	--	---------------------------------



ELEV 1604	TDZE 1600
-----------	-----------

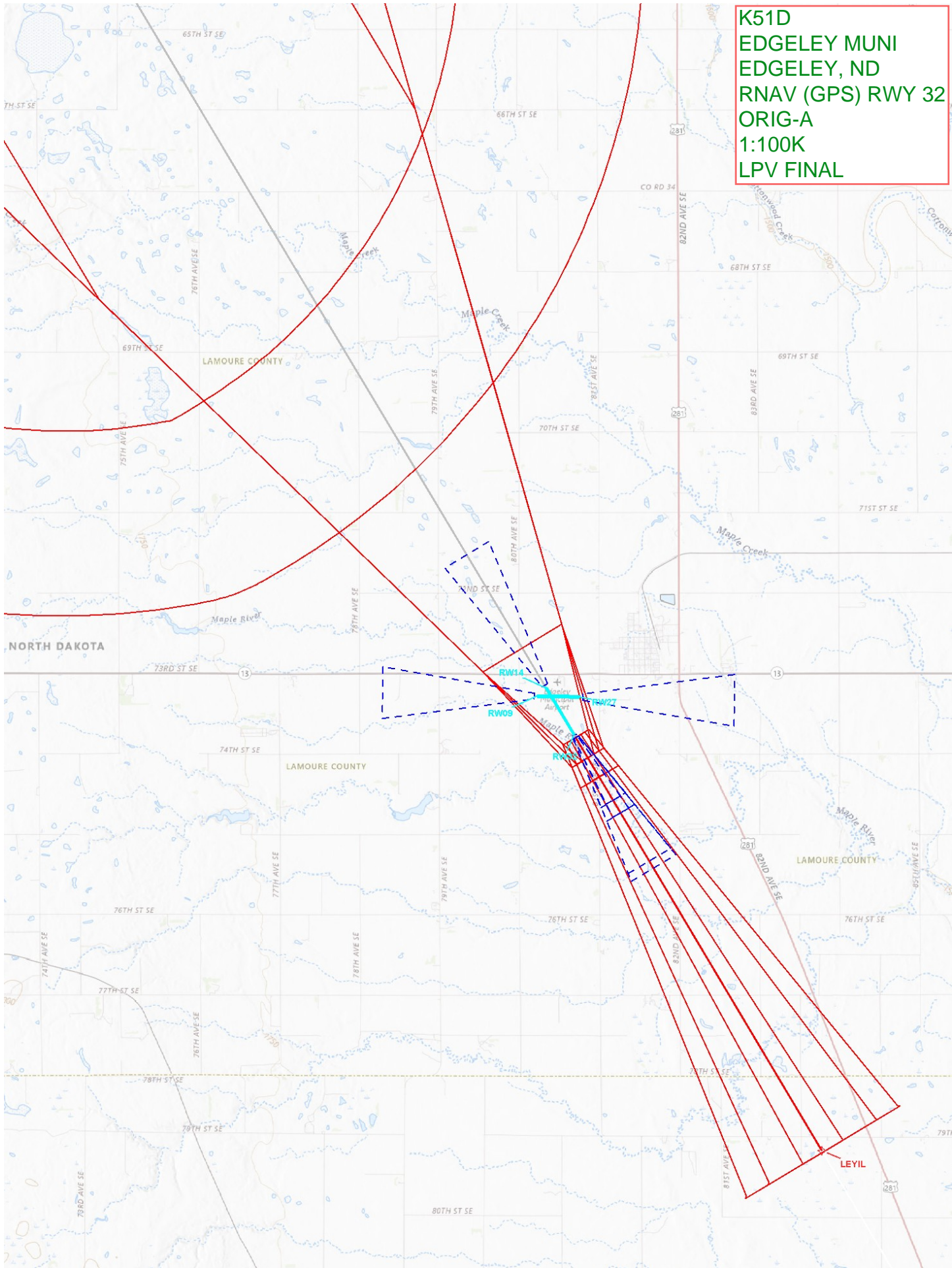


CATEGORY	A	B	C	D
LPV DA	1895-1	295 (300-1)		NA
LNAV/VNAV DA	1945-1 1/8	345 (400-1 1/8)		NA
LNAV MDA	2140-1	540 (600-1)		NA
CIRCLING	2140-1 536 (600-1)	2160-1 556 (600-1)		NA

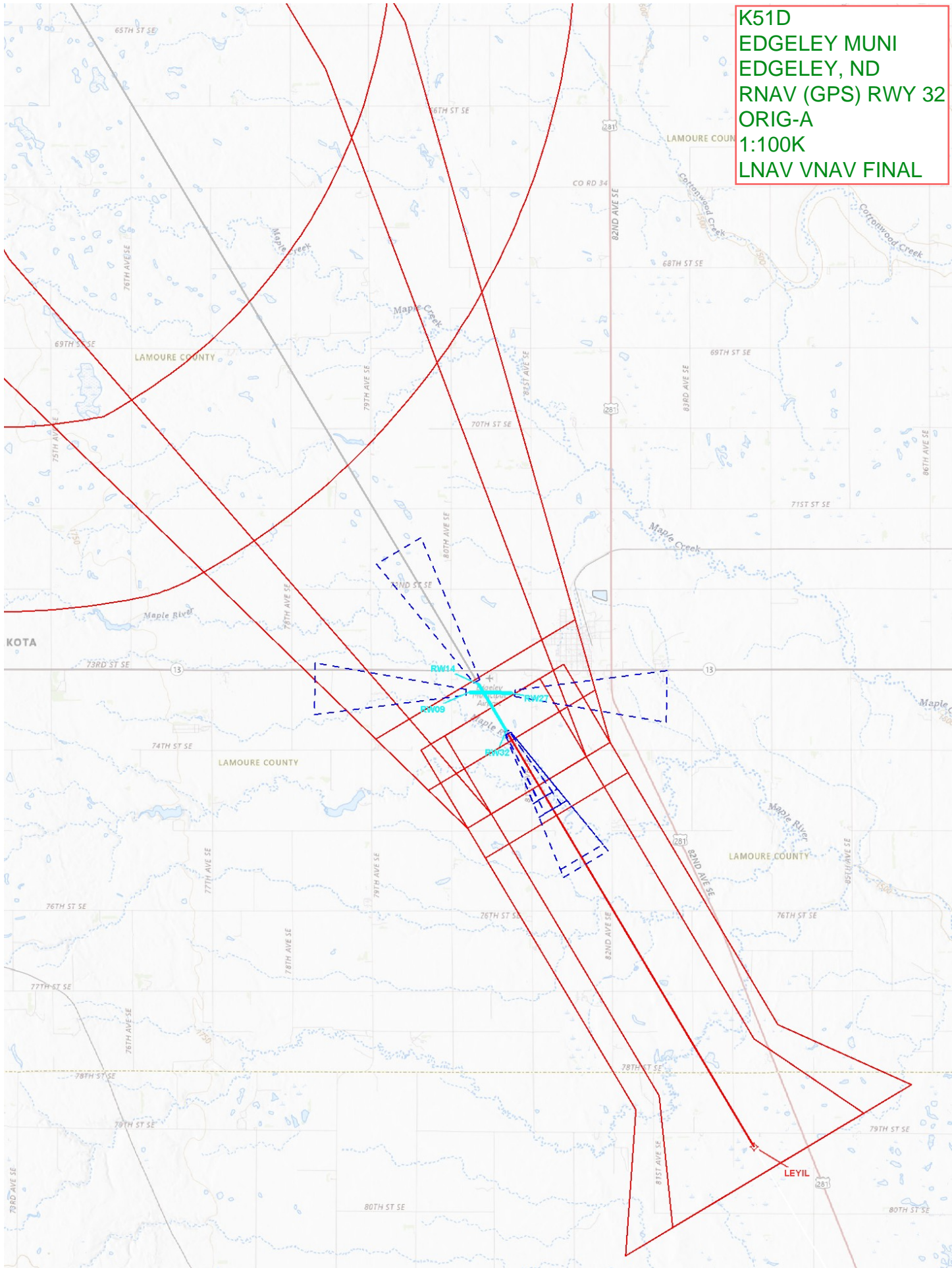
NC-1, 07 AUG 2025 to 04 SEP 2025

NC-1, 07 AUG 2025 to 04 SEP 2025

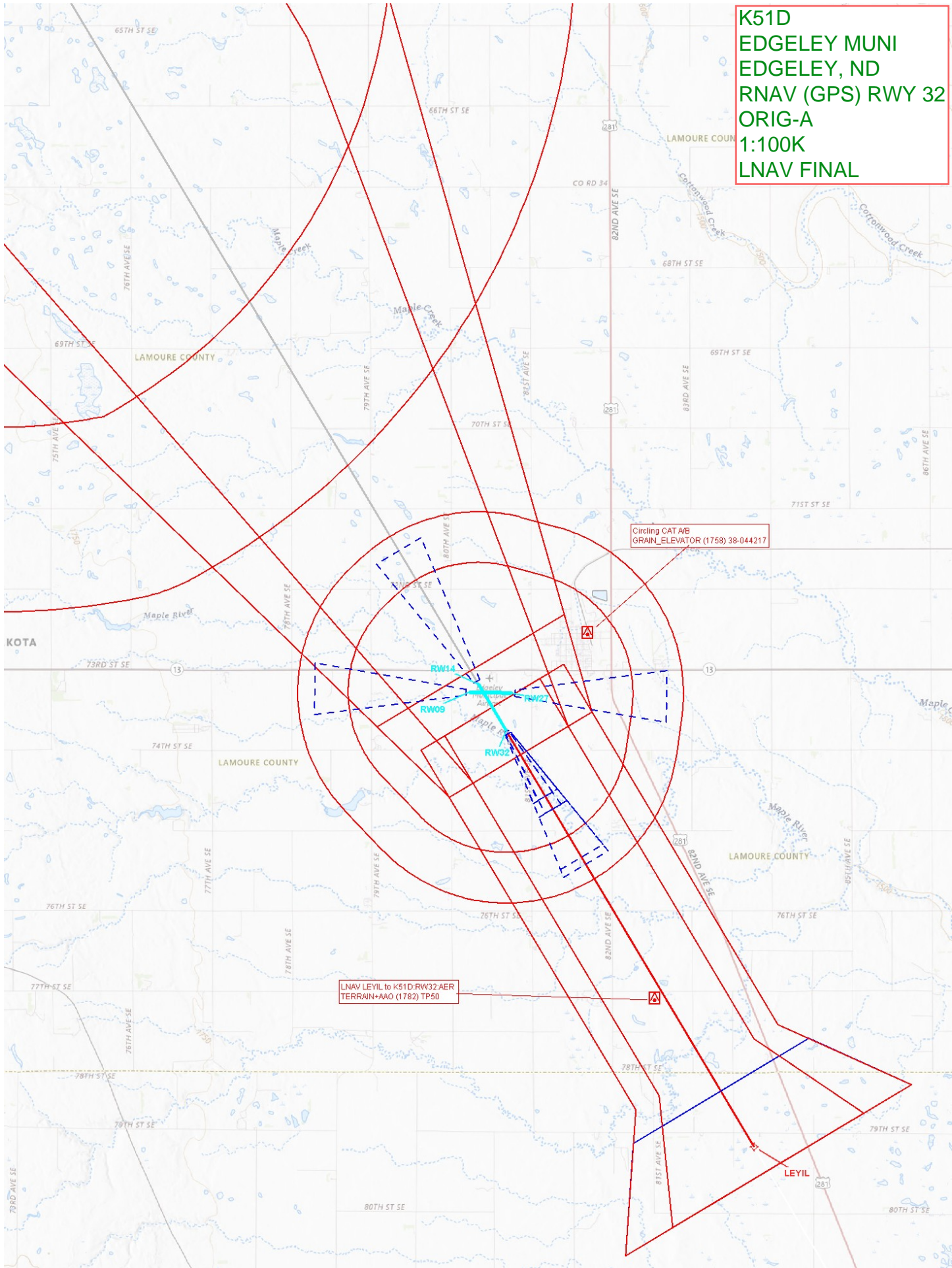
K51D  
EDGELEY MUNI  
EDGELEY, ND  
RNAV (GPS) RWY 32  
ORIG-A  
1:100K  
LPV FINAL



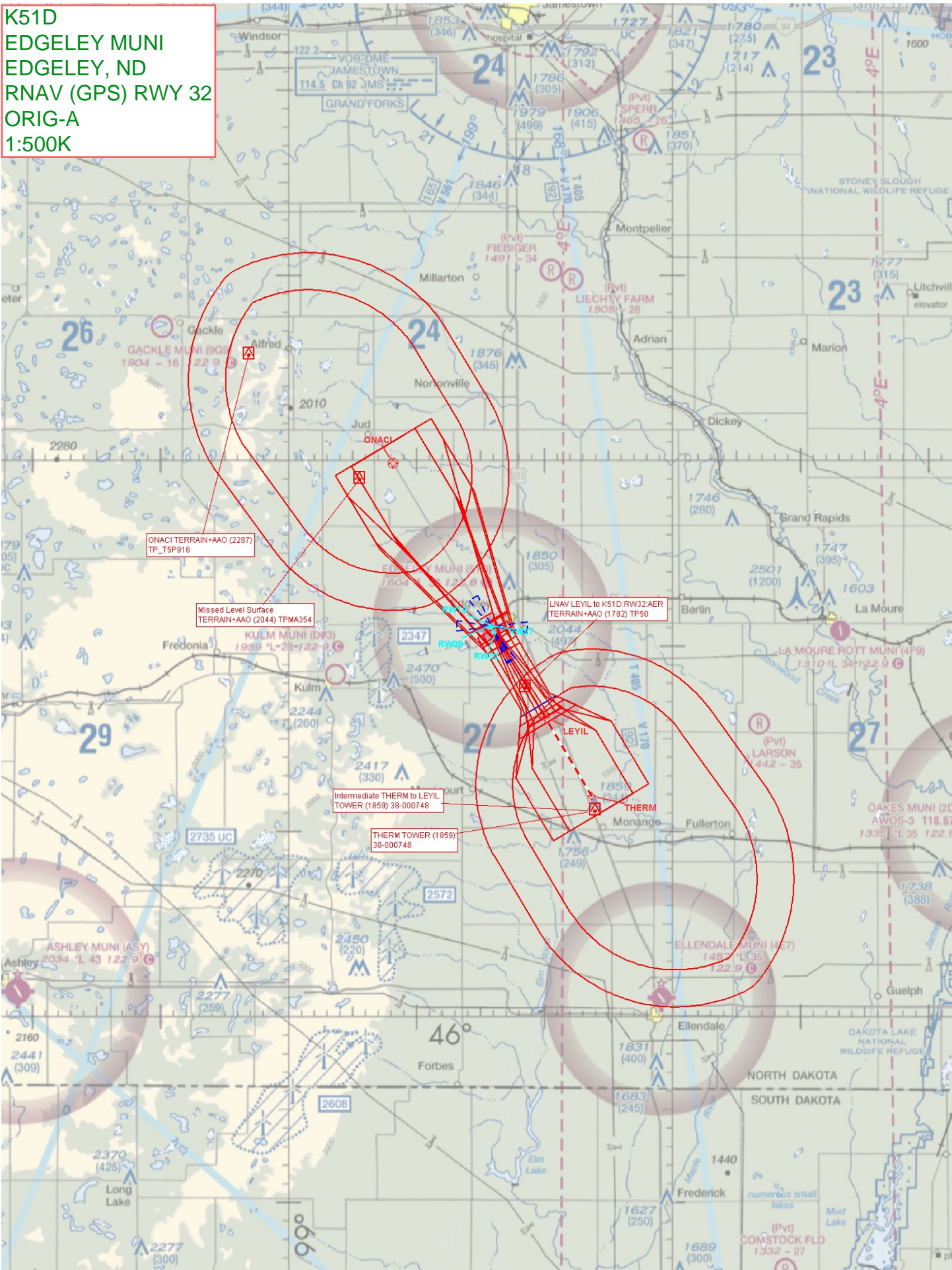
K51D  
EDGELEY MUNI  
EDGELEY, ND  
RNAV (GPS) RWY 32  
ORIG-A  
1:100K  
LNAV VNAV FINAL



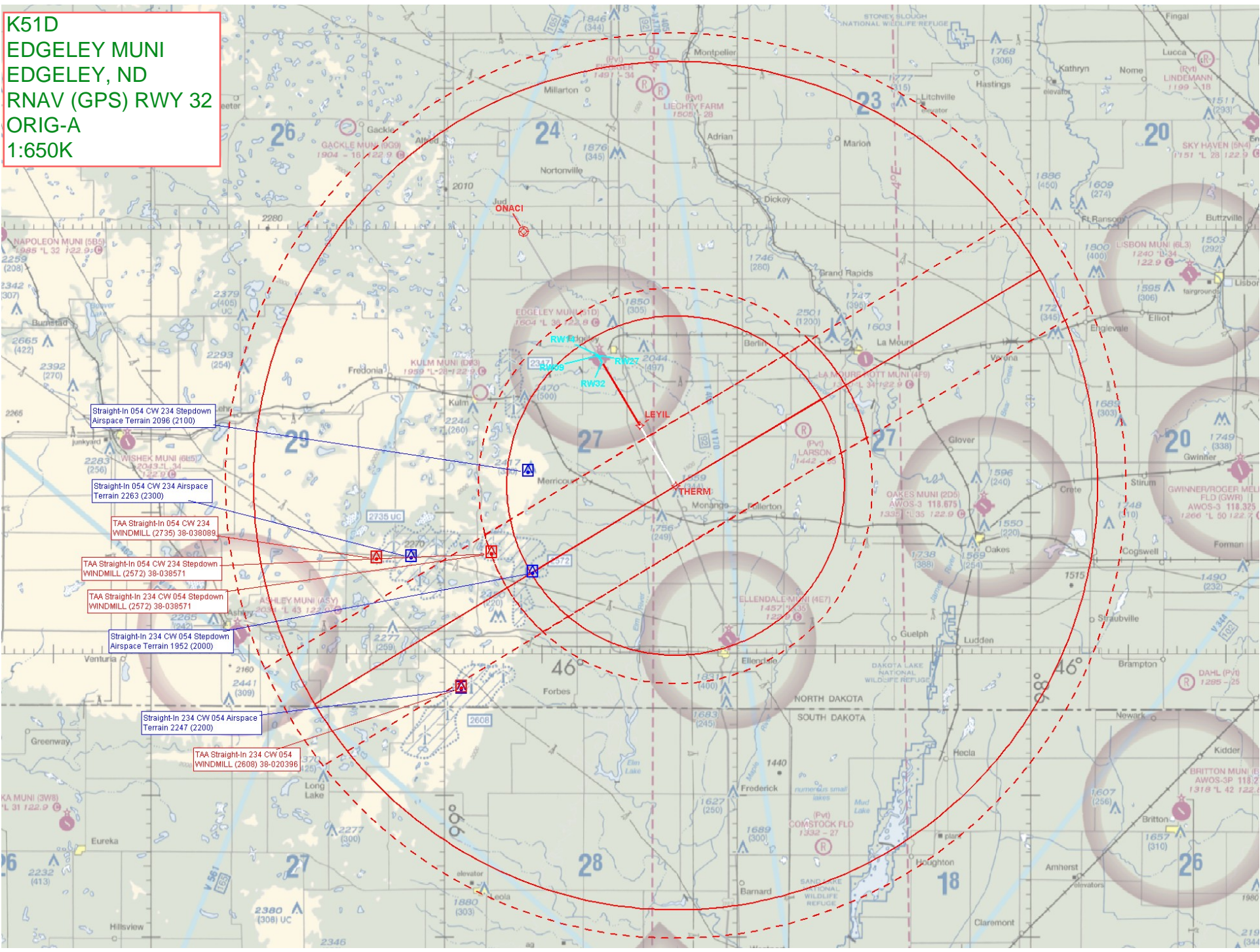
**K51D**  
**EDGELEY MUNI**  
**EDGELEY, ND**  
**RNAV (GPS) RWY 32**  
**ORIG-A**  
**1:100K**  
**LNAV FINAL**



K51D  
EDGELEY MUNI  
EDGELEY, ND  
RNAV (GPS) RWY 32  
ORIG-A  
1:500K



**K51D**  
**EDGELEY MUNI**  
**EDGELEY, ND**  
**RNAV (GPS) RWY 32**  
**ORIG-A**  
**1:650K**



Straight-In 054 CW 234 Stepdown  
Airspace Terrain 2096 (2100)

Straight-In 054 CW 234 Airspace  
Terrain 2263 (2300)

TAA Straight-In 054 CW 234  
WINDMILL (2735) 38-038089

TAA Straight-In 054 CW 234 Stepdown  
WINDMILL (2572) 38-038571

TAA Straight-In 234 CW 054 Stepdown  
WINDMILL (2572) 38-038571

Straight-In 234 CW 054 Stepdown  
Airspace Terrain 1952 (2000)

Straight-In 234 CW 054 Airspace  
Terrain 2247 (2200)

TAA Straight-In 234 CW 054  
WINDMILL (2608) 38-020396