

Flight Procedures Cover Page	Task Action: Abbreviated Amendment	Task Type: IAP	Estimated Chart Date: 08/07/2025	APWS Task ID: 5744407AB04C478B8CD4856F1F25DB9B	APWS Project ID: 225CA8414A9345B29517161AF0FB5884
Procedure: RNAV (GPS) RWY 17 AMDT 3A		Enroute: NO	Specialist: Tyler, George		Agreement Number:
Airport ID: KGVY			Airport City: GREENVILLE		State: TX
Facility ID:	Facility Type:	Flight Inspection Remark Type:			
<div>Procedure Comments: ACTIVE AIRNAV DATA UTILIZED FOR KGVY AND RWYS. PROCESSED IAW TECHNICAL SUPPORT GROUP (AJF-17) MEMO DATED 07/07/2021 GUIDANCE FOR PROCEDURAL CHANGES REQUIRING FLIGHT INSPECTION/VALIDATION. CONTACT DAVID DANNER, AJV-A421, 405-954-5077.</div> <div>QUALITY 6 SN 4/10/25 CHECKED</div> <div>QUALITY 41 CHECKED</div>					

GREENVILLE, TEXAS

AL-5138 (FAA)

24361

WAAS CH 86205 W17A	APP CRS 176°	Rwy Idg TDZE Apt Elev	8030 534 535
--	------------------------	-----------------------------	---

OLD

RNAV (GPS) RWY 17

MAJORS (GVT)

RNP APCH - GPS.

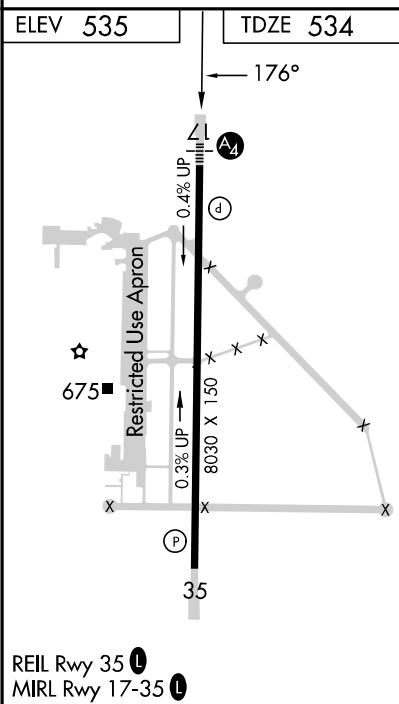
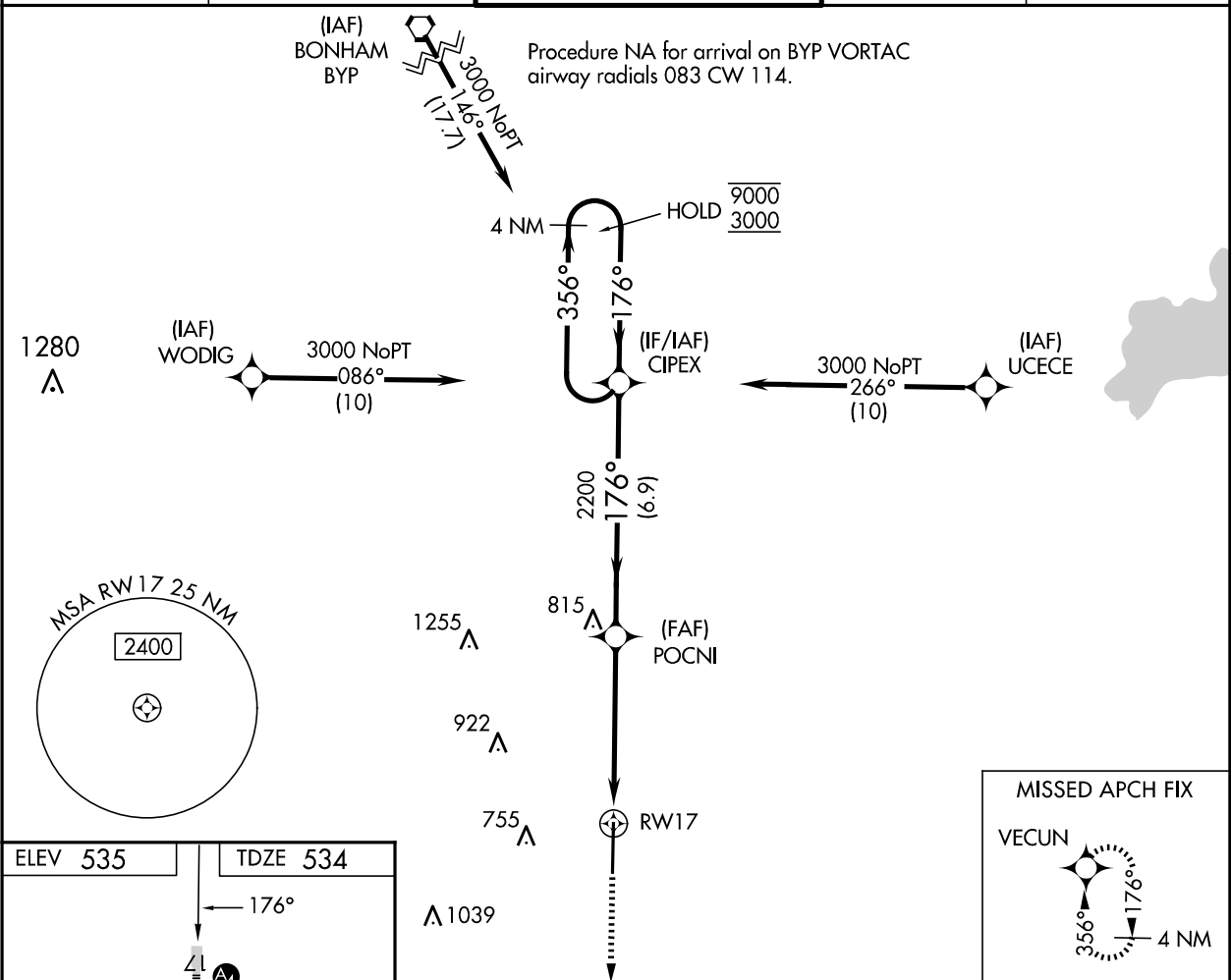
⚠ Inop table does not apply to LPV all Cats and LNAV Cats A and B.
⚠ For uncompensated Baro-VNAV systems, LNAV/VNAV NA below -5°C or above 54°C. For inop ALS, increase LNAV/VNAV all Cats visibility to 1½ SM and LNAV Cat E visibility to 1½ SM.

MALS



MISSED APPROACH: Climb to 3000 direct VECUN and hold.

AWOS-3 133.425	FORT WORTH CENTER 132.025 360.75	MAJORS TOWER ★ 118.65 (CTAF) 385.425	GND CON 121.7 335.8	UNICOM 122.95
--------------------------	--	--	-------------------------------	-------------------------



3000	VECUN	VGSI and RNAV glidepath not coincident (VGSI Angle 3.00/TCH 74).					4 NM Holding Pattern
		POCNI	CIPEX				
		2200	2200				
		1.5 NM to RW17	3.6 NM	6.9 NM			
CATEGORY	A	B	C	D	E		
LPV DA	734-1	200 (200-1)					
LNAV/VNAV DA	943-1	409 (500-1)					
LNAV MDA	1060-1 526 (600-1)	1060-1¼ 526 (600-1¼)					
CIRCLING	1060-1 525 (600-1)	1080-1 545 (600-1)	1080-1½ 545 (600-1½)	1240-2¼ 705 (800-2¼)	1300-2¾ 765 (800-2¾)		

GREENVILLE, TEXAS

33°04'N-96°04'W

MAJORS (GVT)

Amdt 3 26DEC24

RNAV (GPS) RWY 17

SC-2, 23 JAN 2025 to 20 FEB 2025

SC-2, 23 JAN 2025 to 20 FEB 2025