

LOC I-AHN 110.95	APP CRS 274°	Rwy Ldg 6122
		TDZE 812
		Apt Elev 812

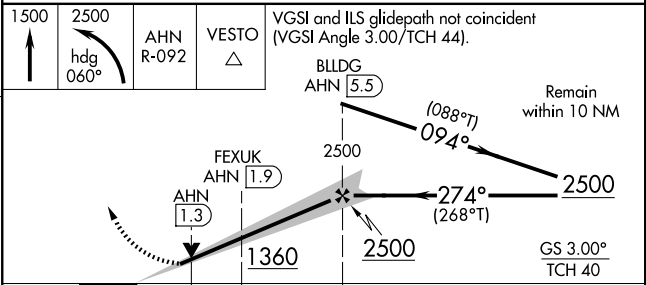
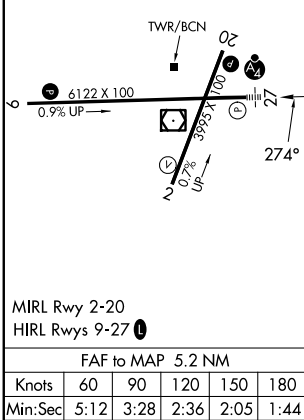
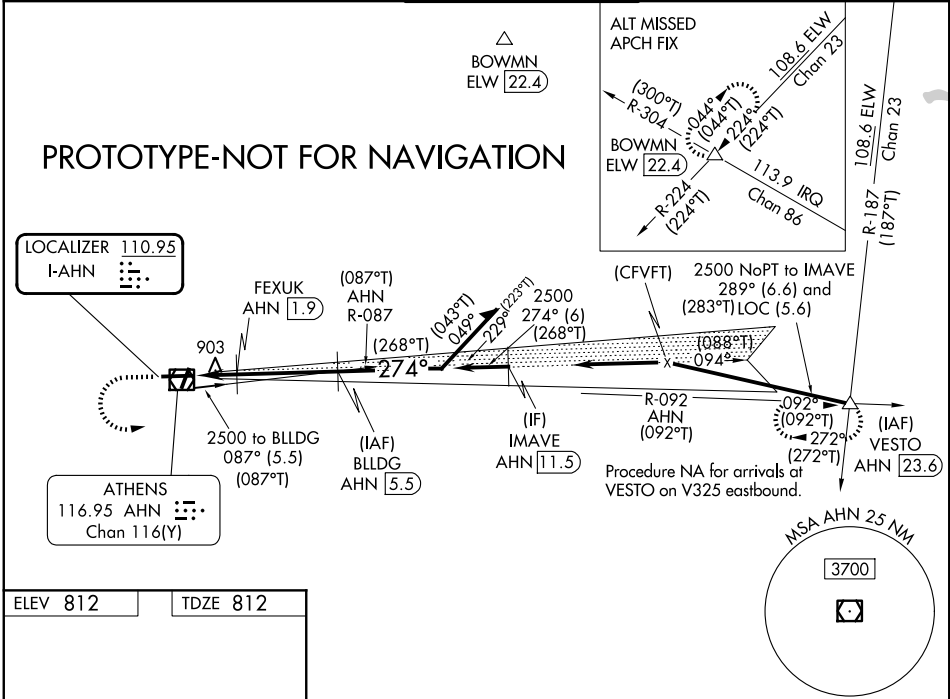
ILS or LOC RWY 27

ATHENS/BEN EPPS (AHN)

DME REQUIRED
 Circling Rwy 2, 20 NA at night. DME from AHN VOR/DME. Simultaneous reception of I-AHN and AHN DME Required. When local altimeter setting not received, use WDR altimeter setting and increase S-ILS 27 DA to 1069 feet; increase all MDAs 60 feet and S-LOC 27 visibility Cat C/D 1/4 SM, and Circling visibility Cat D 1/4 SM. Inop table does not apply to S-ILS 27 all Cats. ~~VDP NA with WDR altimeter setting.~~
VDP NA WHEN USING WDR ALTIMETER SETTING.

MISSED APPROACH:
 Climb to 1500 then climbing left turn to 2500 on heading 060° and AHN VOR/DME R-092 to VESTO INT/ AHN 23.6 DME and hold.

ASOS 132.875	ATLANTA APP CON * 132,475 291.1	ATHENS TOWER * 126.3 (CTAF) 338.275	GND CON 121.8	UNICOM 122.95
------------------------	---	---	-------------------------	-------------------------



	1500	2500	2500	2500
	hdg 060°	hdg 060°	hdg 060°	hdg 060°
	AHN R-092	AHN R-092	AHN R-092	AHN R-092
	VESTO	VESTO	VESTO	VESTO
	BLDG AHN (5.5)	BLDG AHN (5.5)	BLDG AHN (5.5)	BLDG AHN (5.5)
	1 NM	0.7 NM	3.6 NM	
CATEGORY	A	B	C	D
S-ILS 27		101 2-3/4	200 (200-3/4)	
S-LOC 27		116 0-3/4	348 (400-3/4)	
CIRCLING	1260-1 448 (500-1)	1280-1 468 (500-1)	1320-1 1/2 508 (600-1 1/2)	1460-2 648 (700-2)