

Flight Procedures Cover Page	Task Action: FLIGHT CHECK	Task Type: SID	Estimated Chart Date: 08/07/2025	APWS Task ID: 58241F41DBC14D1DAE39E8655FECBAF1	APWS Project ID: 1685CB84A307470EB52FF736E3445E5B
Procedure: SID LEJON FIVE SAN ANTONIO TX KSSF		Enroute: YES	Specialist: Johnson, Raymond		Agreement Number:
Airport ID: KSSF			Airport City: SAN ANTONIO		State: TX
Facility ID:	Facility Type:	Flight Inspection Remark Type: New FC Slot			
<div>Procedure Comments: PROCEDURE COMPLETED USING PENDING AIRNAV DATA.</div> <div>MAGVAR: KSSF MAGVAR CHANGED FROM 8E/1980 TO 3E/2025.</div> <div>WAIVER REQUESTED FOR A SID DESIGNED TO SUPPORT ATC ISSUING A RANGE OF INITIAL HEADINGS WITH A MAINTAINED ALTITUDE LOWER THAN THE UNRESTRICTED CLIMB ALLOWED BY TERPS.</div> <div>UPDATED TAKEOFF MINIMUMS AND DP ROUTE DESCRIPTION WITH INITIAL CLIMB TO ALTITUDES TO MATCH RNAV SIDS FOR CONTINUITY AND SAFETY</div> <div>CONTACT: ALLAN WILL, AJV-A423 MANAGER, 405.954.6103</div> <div>QUALITY 20 CHECKED</div> <div>QUALITY 38 CHECKED</div>					

**1. FLIGHT PROCEDURE IDENTIFICATION:**

SAN ANTONIO, TX  
SAN ANTONIO INTL (KSAT)  
STINSON MUNI (KSSF)  
LEJON DEPARTURE

**2. WAIVER REQUIRED AND APPLICABLE STANDARD:**

To permit publishing a SID with no assigned heading or altitude.

FAA Order 8260.46 Memorandum paragraph 4-a.b. states: Do not apply Section 13-2, Diverse Departure Assessment without a FS waiver for the following.

- a. A SID designed to support ATC radar vectoring below the MVA without a DVA.
- b. A SID designed to support ATC issuing a range of initial headings with a maintained altitude lower than the unrestricted climb allowed by TERPS.

**3. REASON FOR WAIVER (JUSTIFICATION FOR NONSTANDARD TREATMENT):**

Currently, the ALAMO Departure primarily serves San Antonio INTL (KSAT) and Stinson MUNI (KSSF) as a satellite airport. San Antonio TRACON (SAT) ATC requests to have the departure route description for KSAT state: Climb on assigned heading for RADAR Vectors to SAT VORTAC, maintain 5000'. For KSSF TAKEOFF RWY 10: CLIMB ON HEADING 99.53 OR AS ASSIGNED BY ATC FOR RADAR VECTORS TO SAT VORTAC, THENCE....TAKEOFF RWY 14: CLIMB ON HEADING 142.36 OR AS ASSIGNED BY ATC FOR RADAR VECTORS TO SAT VORTAC, THENCE....TAKEOFF RWY 28: CLIMB ON HEADING 279.53 OR AS ASSIGNED BY ATC FOR RADAR VECTORS TO SAT VORTAC, THENCE....TAKEOFF RWY 32: CLIMB ON HEADING 322.36 OR AS ASSIGNED BY ATC FOR RADAR VECTORS TO SAT VORTAC, THENCE...

**4. EQUIVALENT LEVEL FOR SAFETY PROVIDED:**

Obstacle Departure criteria has already been evaluated for KSAT and KSSF. TAKEOFF MINS are published on the SID chart and establish the necessary climb needed to avoid obstacles until reaching the Minimum Vectoring Altitude (MVA) where Air Traffic will assume responsibility for the aircraft. TAKEOFF MINS for KSAT: Standard. TAKEOFF MINS for KSSF: RWY 10: STANDARD WITH MINIMUM CLIMB OF 230 FT/NM TO 1900, RWY 14: STANDARD WITH MINIMUM CLIMB OF 220 FT/NM TO 1900, RWY 28: 300-1 5/8 OR STANDARD WITH MINIMUM CLIMB OF 230 FT/NM TO 900, OR ALTERNATIVELY, WITH STANDARD TAKEOFF MINIMUMS AND A NORMAL 200 FT/NM CLIMB GRADIENT, TAKEOFF MUST OCCURE NO LATER THAN 1800 FT PRIOR TO DER, RWY 32: STANDARD WITH MINIMUM CLIMB OF 230 FT/NM TO 1700.

**5. ALTERNATIVE ACTIONS DEEMED NOT FEASIBLE:**

Due to the variations in the performance of local aircraft, SAT requires the ability to assign diverging headings on departure to deconflict traffic. SAT requires the ability to assign headings based off of operational need which will be at or above the MVA for SSF and 5000' for KSAT. Additionally, multiple published Standard Terminal Arrival Routes in SAT airspace terminate at or above 6000' which by design, deconflicts with SIDS that climb to 5000' in the local area.

**6. COORDINATION WITH USER ORGANIZATIONS (SPECIFY):**

SAT Approach Control, San Antonio Intl (KSAT) ATCT, and Stinson MUNI (KSSF) ATCT

**7: SUBMITTED BY:**

DATE	OFFICE IDENTIFICATION	TITLE	SIGNATURE
	AJV-A423	MGR	<i>Digitally signed by</i>

**8. AFS ACTIONS:**

**ALLAN WILL**  
Apr 02, 2025

☐ **APPROVED**      ☐ **DISAPPROVED**      ☐ **NOT REQUIRED**

**COMMENTS:**

DATE	ROUTING SYMBOL	SIGNATURE
------	----------------	-----------

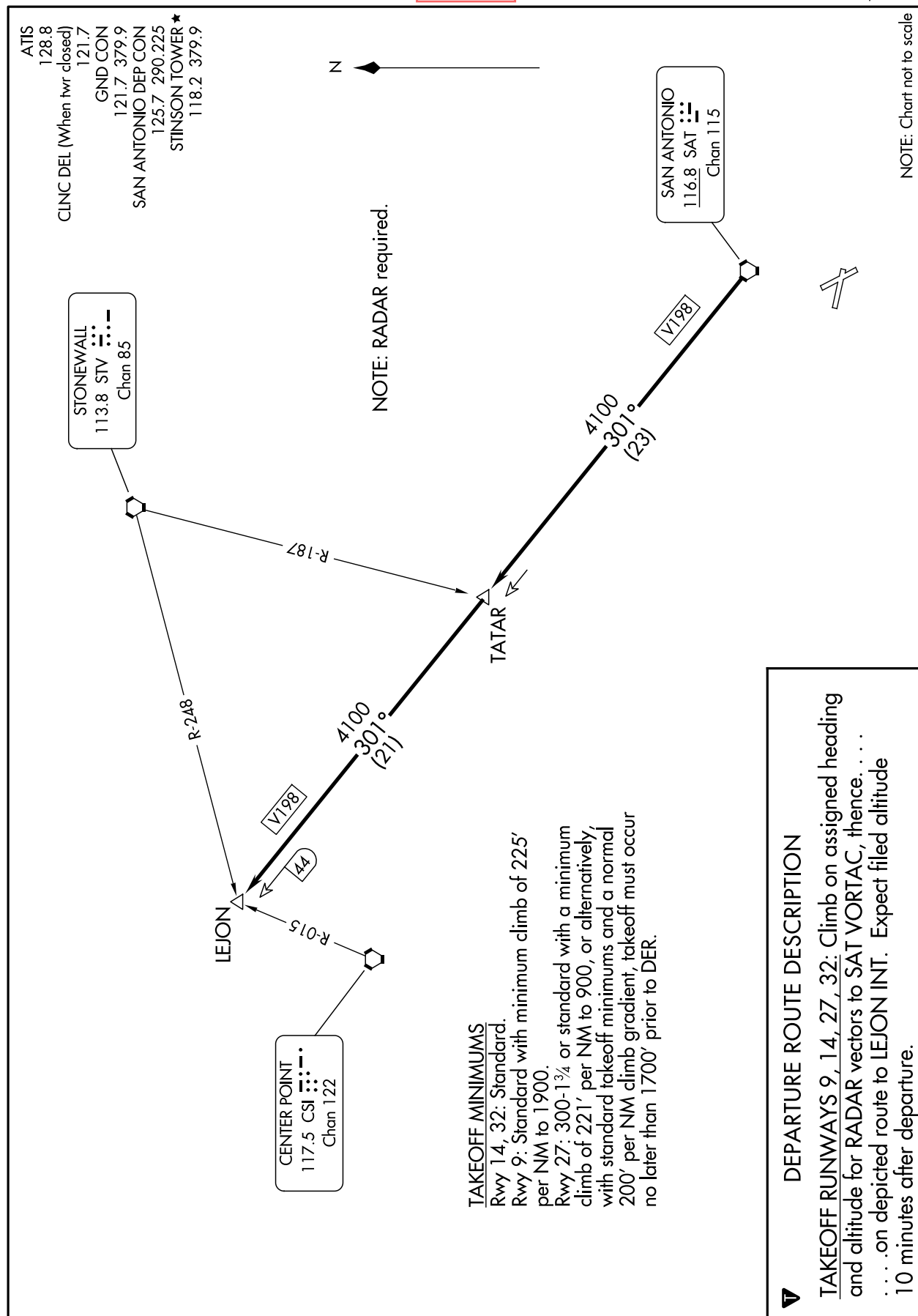
## LEJON FOUR DEPARTURE

AL-372 (FAA)

**OLD**

STINSON MUNI (SSF)  
SAN ANTONIO, TEXAS

SC-3, 20 MAR 2025 to 17 APR 2025



LEJON FOUR DEPARTURE  
(LEJON4.LEJON) 02MAR17

SAN ANTONIO, TEXAS  
STINSON MUNI (SSF)

SC-3, 20 MAR 2025 to 17 APR 2025

(LEJON5,LEJON) FIG  
LEJON FIVE DEPARTURE

AL-369 (FAA)

SAN ANTONIO INTL (SAT)  
SAN ANTONIO, TEXAS

**TOP ALTITUDE:**  
**5000**

RADAR required..

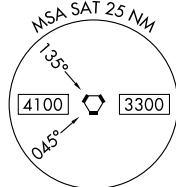
STONEWALL  
113.8 STV  
Chan 85

TAKEOFF MINIMUMS:  
Rwys 4, 13L/R, 22, 31L/R: Standard.



TATAR

SAN ANTONIO  
116.8 SAT  
Chan 115



(256°T)  
R-248

(195°T)  
R-187

(309°T)  
4100  
301°  
(21)

(309°T)  
4100  
301°  
(23)

V198  
44

LEJON

(023°T)  
R-015

CENTER POINT  
117.5 CSI  
Chan 122

SAN ANTONIO DEP CON  
125.1 307.0 (Rwys 4/22/31)  
125.7 290.225 (Rwy 13)  
D-ATIS  
118.9  
CLNC DEL  
126.7  
CPDLC  
GND CON  
121.9 348.6  
SAN ANTONIO TOWER  
119.8 257.8

PROTOTYPE-NOT FOR NAVIGATION

#### DEPARTURE ROUTE DESCRIPTION

TAKEOFF RUNWAYS 4, 13L/R, 22, 31L/R: Climb on assigned heading for RADAR vectors to SAT VORTAC, maintain 5000, then on depicted route to LEJON. Expect filed altitude 10 minutes after departure.

NOTE: Chart not to scale.

LEJON FIVE DEPARTURE  
(LEJON5,LEJON) FIG

SAN ANTONIO, TEXAS  
SAN ANTONIO INTL (SAT)



RADAR required.

STONEWALL  
113.8 STV  
Chan 85

TAKEOFF MINIMUMS:

Rwy 10: Standard with minimum climb of 230' per NM to 1900.

Rwy 14: Standard with minimum climb of 220' per NM to 1900.

Rwy 28: 300-1% or standard with minimum climb of 230' per NM to 900, or alternatively, with standard takeoff minimums and a normal 200' per NM climb gradient, takeoff must occur no later than 1800' prior to DER.

Rwy 32: Standard with minimum climb of 230' per NM to 1700.



CENTER POINT  
117.5 CSI  
Chan 122

SAN ANTONIO  
116.8 SAT  
Chan 115

PROTOTYPE-NOT FOR NAVIGATION

DEPARTURE ROUTE DESCRIPTION

TAKEOFF RUNWAY 10: Climb on heading 100° or as assigned by ATC for RADAR vectors to SAT VORTAC, thence . . .

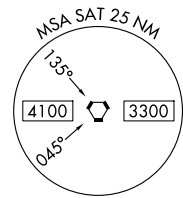
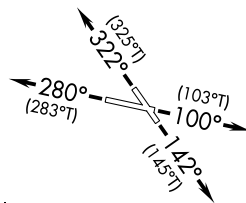
TAKEOFF RUNWAY 14: Climb on heading 142° or as assigned by ATC for RADAR vectors to SAT VORTAC, thence . . .

TAKEOFF RUNWAY 28: Climb on heading 280° or as assigned by ATC for RADAR vectors to SAT VORTAC, thence . . .

TAKEOFF RUNWAY 32: Climb on heading 322° or as assigned by ATC for RADAR vectors to SAT VORTAC, thence . . .

. . . on depicted route to LEJON. Expect filed altitude 10 minutes after departure.

NOTE: Chart not to scale.



SAN ANTONIO DEP CON  
125.7 290.225  
ATIS  
128.8  
CLNC DEL (When twr closed)  
121.7  
GND CON  
121.7 379.9  
STINSON TOWER★  
118.2 379.9

LEJON

TATAR

(023°T)  
R-015

(256°T)  
R-248

(195°T)  
R-187

(309°T)  
4100  
301°  
(21)

(309°T)  
4100  
301°  
(23)

(V198)  
44

(V198)

**AIRPORT ID:** KSSF  
**AIRPORT NAME:** STINSON MUNI  
**CITY:** SAN ANTONIO  
**STATE:** TX  
**PROC ID:** LEJON SID RWY 10 TRANSITION  
**SCALE:** 1:100K

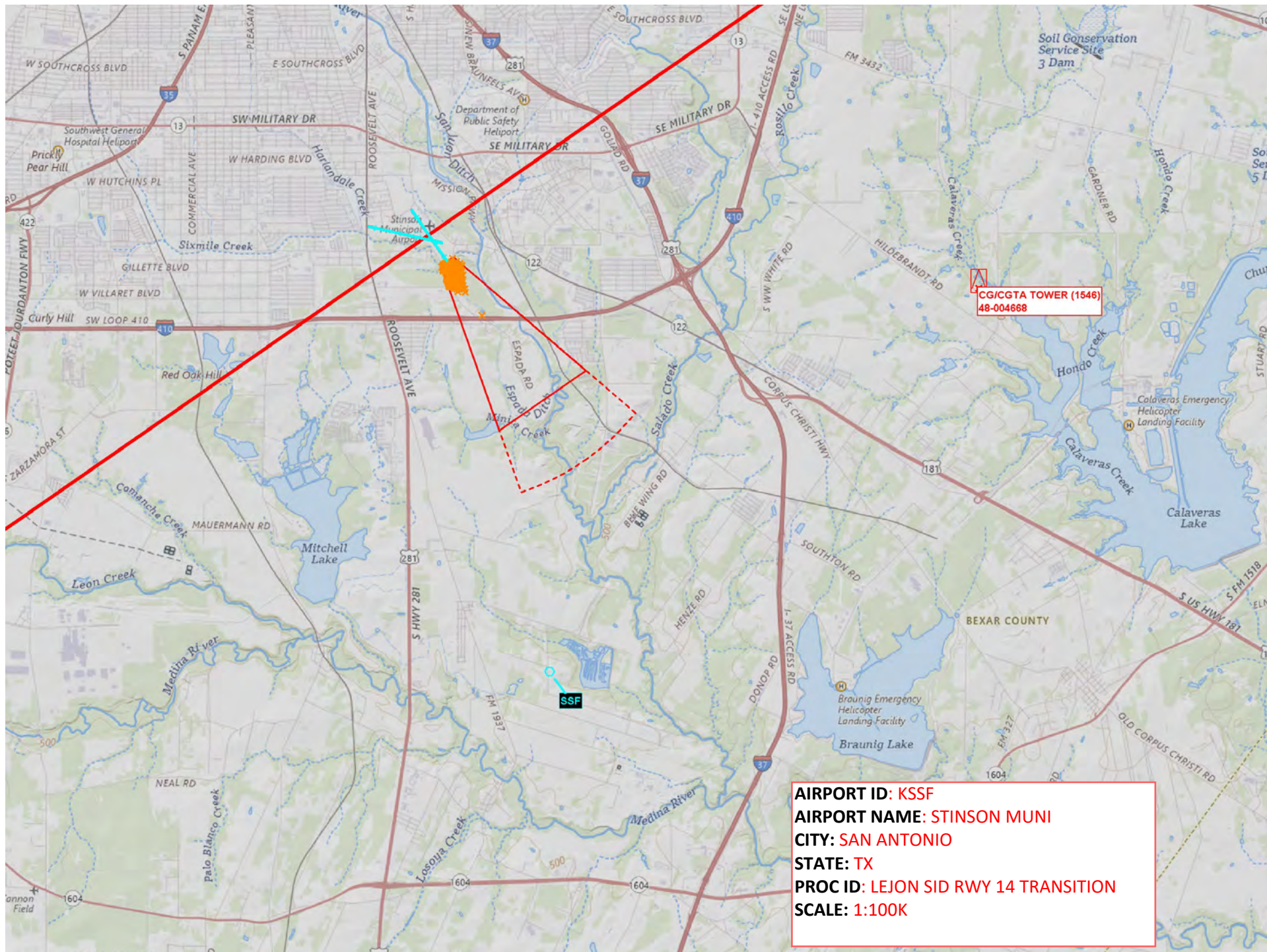
CG/CGTA TOWER (1546)  
48-004668

SSP









**AIRPORT ID:** KSSF  
**AIRPORT NAME:** STINSON MUNI  
**CITY:** SAN ANTONIO  
**STATE:** TX  
**PROC ID:** LEJON SID RWY 14 TRANSITION  
**SCALE:** 1:100K

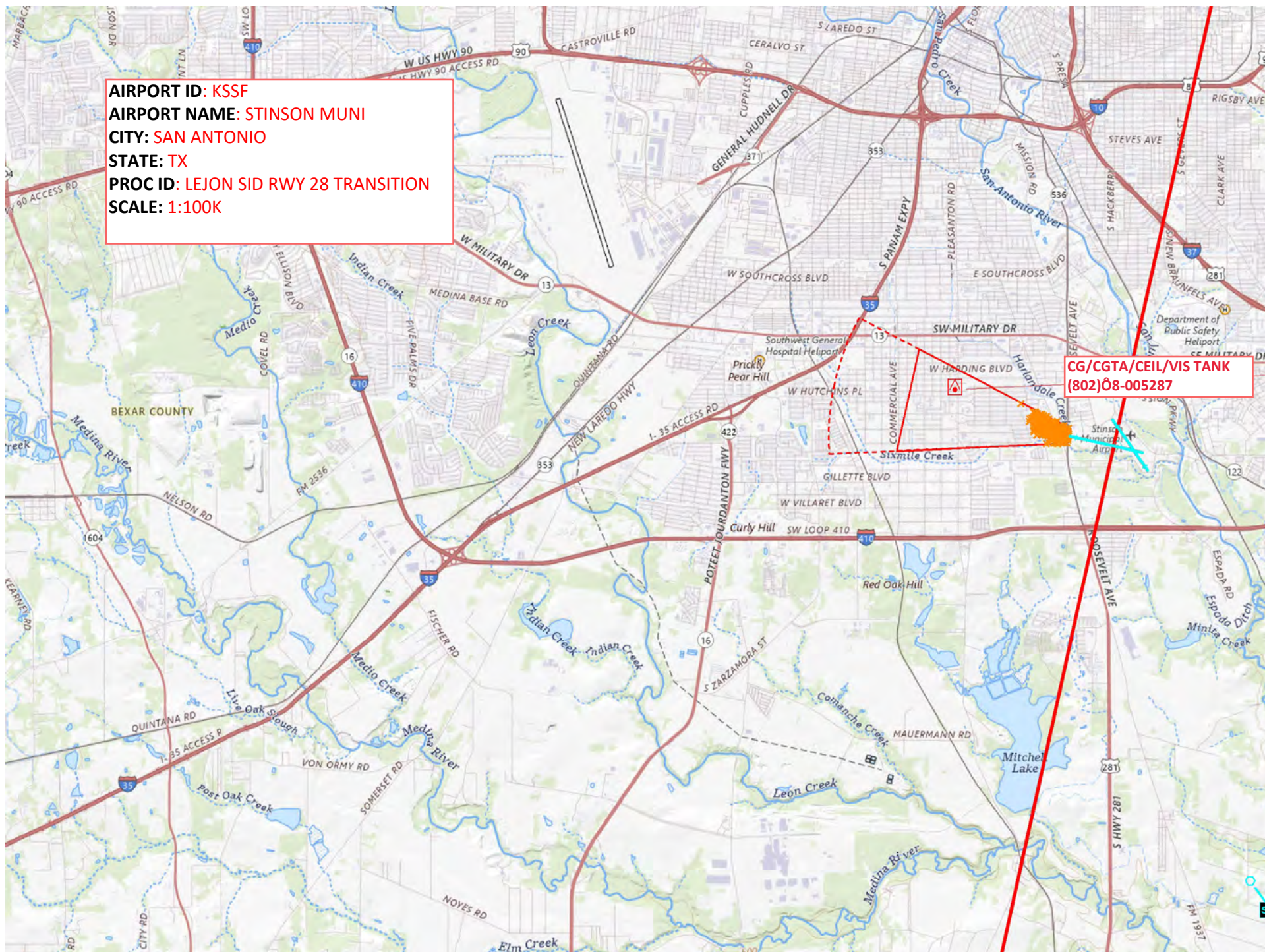






**AIRPORT ID:** KSSF  
**AIRPORT NAME:** STINSON MUNI  
**CITY:** SAN ANTONIO  
**STATE:** TX  
**PROC ID:** LEJON SID RWY 28 TRANSITION  
**SCALE:** 1:100K

**CG/CGTA/CEIL/VIS TANK**  
**(802)08-005287**



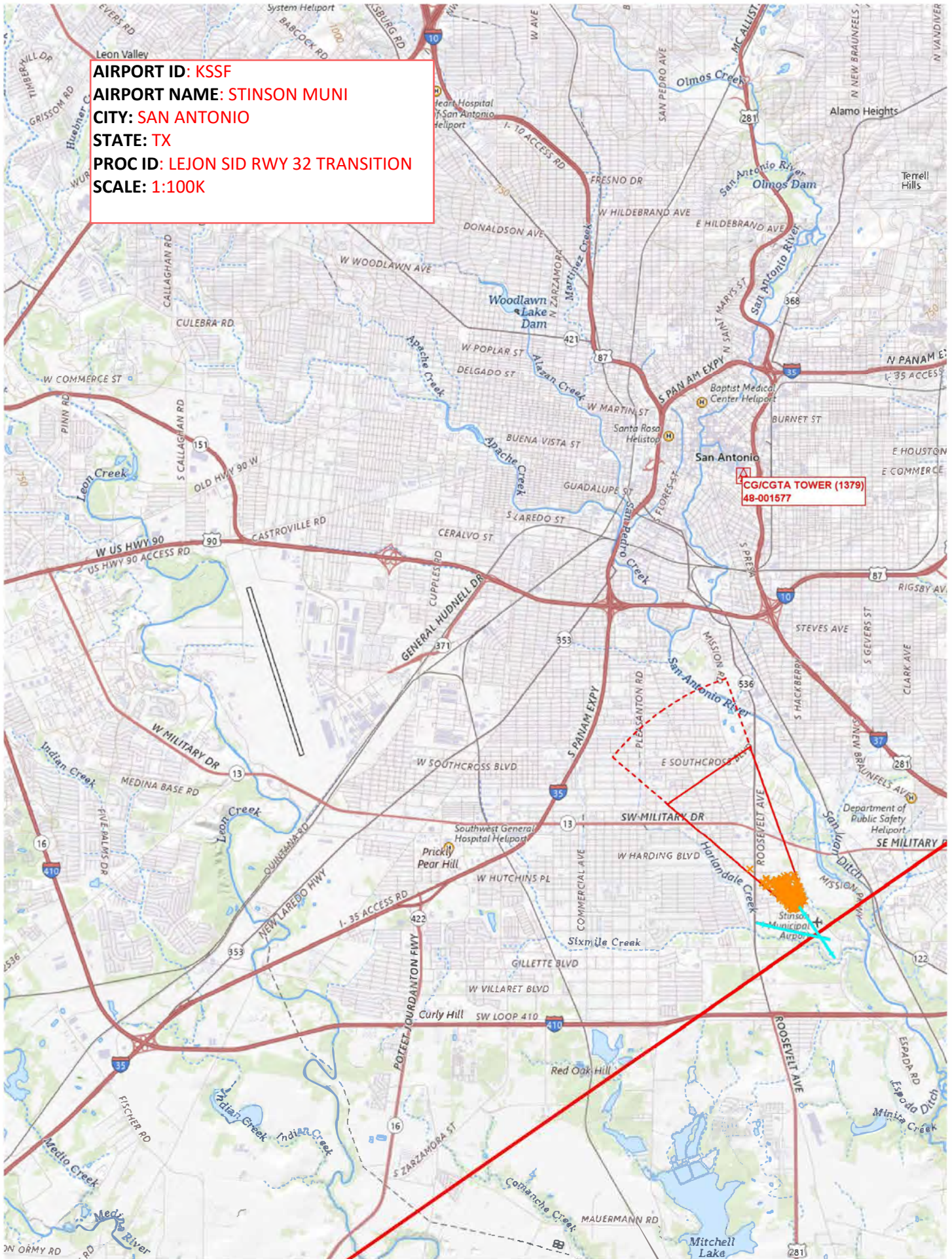






**AIRPORT ID:** KSSF  
**AIRPORT NAME:** STINSON MUNI  
**CITY:** SAN ANTONIO  
**STATE:** TX  
**PROC ID:** LEJON SID RWY 32 TRANSITION  
**SCALE:** 1:100K

**CG/CGTA TOWER (1379)**  
**48-001577**









**AIRPORT ID:** KSSF  
**AIRPORT NAME:** STINSON MUNI  
**CITY:** SAN ANTONIO  
**STATE:** TX  
**PROC ID:** LEJON SID  
**SCALE:** 1:500K

~~CTC SAN ANTONIO APP WITHIN  
20 NM ON 125.1 307.0~~

SAT to TATAR/TATAR to LEJON TOWER (3048)  
48-005697

ETC SAN ANTONIO APP WITHIN  
20 NM ON 118.05 353.5