

Flight Procedures Cover Page	Task Action: FLIGHT CHECK	Task Type: IAP	Estimated Chart Date: 05/14/2026	APWS Task ID: 58CDB8567E2840E19C8D158A242A7133	APWS Project ID: 7F22DACEC74148E1AC4E02940B692DA9
Procedure: RNAV (GPS) RWY 29 AMDT 1		Enroute: NO	Specialist: Smith, Rodney		Agreement Number:
Airport ID: 1H2			Airport City: EFFINGHAM		State: IL
Facility ID:	Facility Type:	Flight Inspection Remark Type: New FC Slot			

**Procedure Comments:**  
PENDING AIRPORT DATA USED.

CANCEL NOTAMs 6/0850 and 6/4326.

CONCURRENNT WITH RNAV GPS RWY 1 A1 AND RNAV GPS RWY 11 A2.

CRC REMAINDER CHANGED FROM 4CC372D0 TO 4D7812E9 (SEE 8260-3 FOR SPECIFICS)

POC KYLE THOMPSON 405-954-2135



WAAS CH <b>93933</b> <b>W29A</b>	APP CRS <b>294°</b>	Rwy Ldg TDZE Apt Elev	<b>6002</b> <b>576</b> <b>585</b>
--	------------------------	-----------------------------	---

# RNAV (GPS) RWY 29

EFFINGHAM COUNTY RGNL (1H2)

RNP APCH - GPS.

**▼** Rwy 29 helicopter visibility reduction below 3/4 SM NA.  
**▲** For uncompensated Baro-VNAV systems, LNAV/VNAV NA below -16°C or above 54°C.  
 Circling to Rwy 1, 19 NA at night.

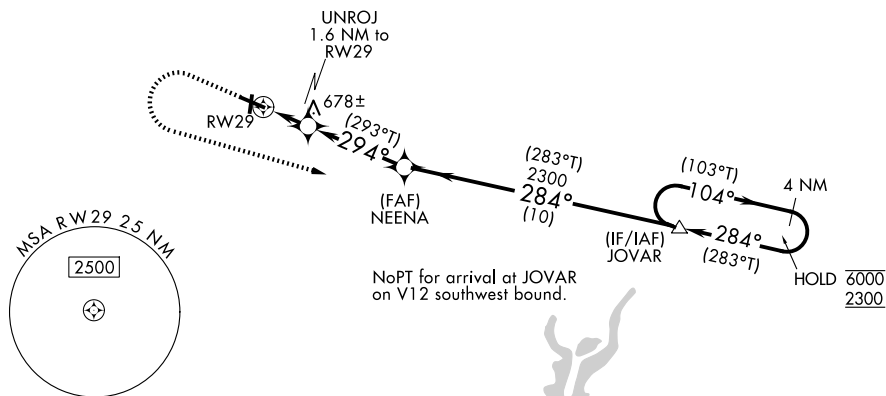
**MISSED APPROACH:**  
 Climb to 1800 then  
 climbing left turn to  
 2300 direct JOVAR  
 and hold.

AWOS-3PT  
**118.375**

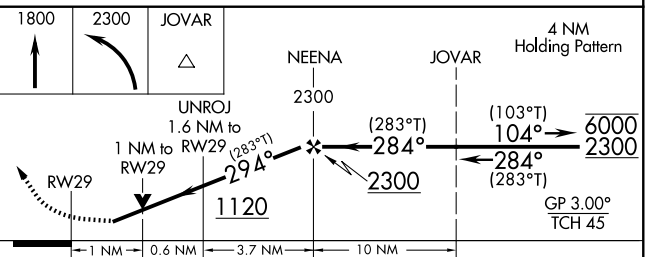
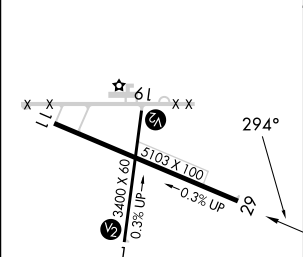
KANSAS CITY CENTER  
**124.3 269.15**

UNICOM  
**122.725 (CTAF) 0**

## PROTOTYPE-NOT FOR NAVIGATION



ELEV	585	TDZE	576
------	-----	------	-----



CATEGORY	A	B	C	D
LPV DA		835-1	259 (300-1)	
LNAV/VNAV DA		940-1	364 (400-1)	
LNAV MDA		940-1	364 (400-1)	
CIRCLING	1020-1 435 (500-1)	1140-1 555 (600-1)	1440-2 1/2 855 (900-2 1/2)	1440-2 3/4 855 (900-2 3/4)

REIL Rwy 11 and 29 **0**  
 MIRL Rwy 1-19 and 11-29 **0**

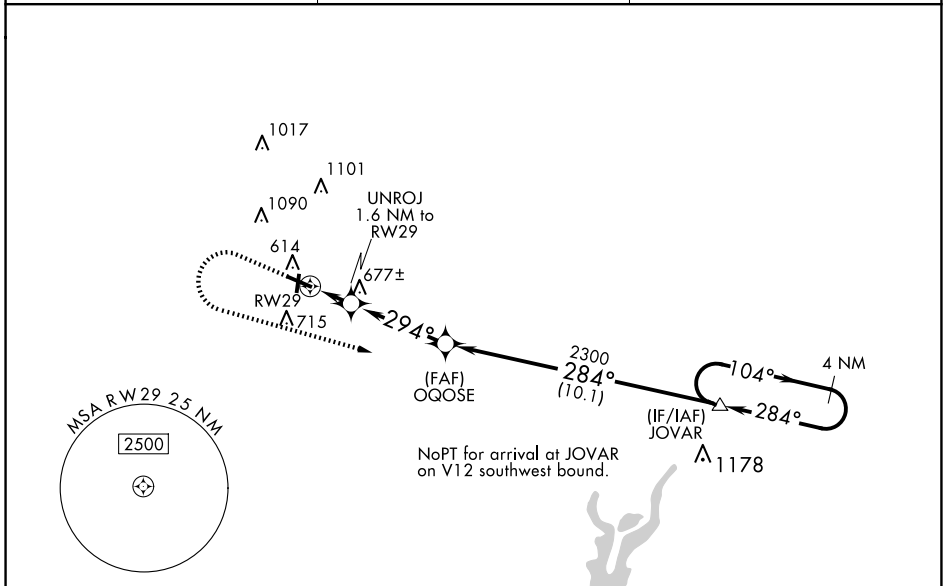
WAAS CH <b>93933</b> <b>W29A</b>	APP CRS <b>294°</b>	Rwy Idg <b>5103</b> TDZE <b>579</b> Apt Elev <b>585</b>
--	------------------------	---

**OLD**

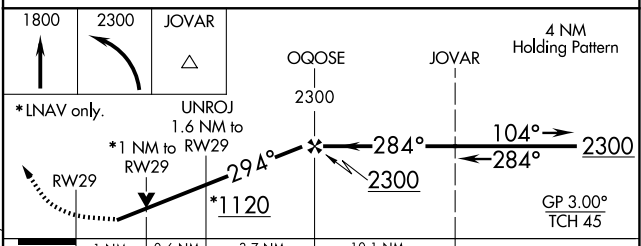
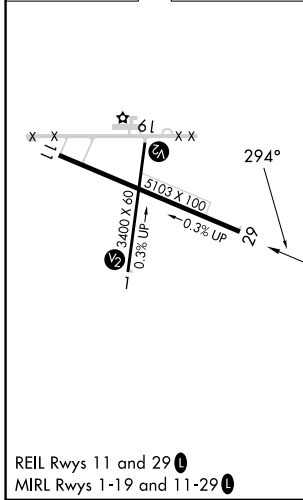
**RNAV (GPS) RWY 29**  
EFFINGHAM COUNTY RGNL (1H2)

RNP APCH. ▼ Rwy 29 helicopter visibility reduction below 3/4 SM NA. Straight-in Rwy 1 NA at night, Circling Rwy 1, 19 NA at night. For uncompensated Baro-VNAV systems, LNAV/VNAV below -16°C or above 54°C. Baro-VNAV and VDP NA when using Olney-Noble altimeter setting. When local altimeter setting not received, use Olney-Noble altimeter setting and increase all DA 77 feet and all MDA 80 feet; increase LPV all Cats and Circling Cat C/D visibility 1/4 SM, increase LNAV/VNAV all Cats visibility 3/8 SM.	MISSED APPROACH: Climb to 1800 then climbing left turn to 2300 direct JOVAR and hold.
---	--

AWOS-3PT <b>118.375</b>	KANSAS CITY CENTER <b>124.3 269.15</b>	UNICOM <b>122.725 (CTAF) 0</b>
----------------------------	---	-----------------------------------



ELEV <b>585</b>	TDZE <b>579</b>
-----------------	-----------------



CATEGORY	A	B	C	D
LPV DA		838-7/8	259 (300-7/8)	
LNAV/VNAV DA		859-7/8	280 (300-7/8)	
LNAV MDA		940-1	361 (400-1)	
<b>C</b> CIRCLING	1020-1 435 (500-1)	1140-1 555 (600-1)	1440-2 1/2 855 (900-2 1/2)	1440-2 3/4 855 (900-2 3/4)

EC-3, 30 OCT 2025 to 27 NOV 2025

EC-3, 30 OCT 2025 to 27 NOV 2025