

Flight Procedures Cover Page	Task Action: FLIGHT CHECK	Task Type: IAP	Estimated Chart Date: 05/16/2024	APWS Task ID: 5A1BF820C7274775922664A320085BEF	APWS Project ID: 47754F97F4864A80A567D7D498672A14
Procedure: COPTER ILS Y OR LOC Y RWY 6 AMDT 3		Enroute: NO	Specialist: Jackson, Frank		Agreement Number:
Airport ID: KTEB			Airport City: TETERBORO		State: NJ
Facility ID: TEB	Facility Type: ILS	Flight Inspection Remark Type: New FC Slot			

Procedure Comments:

PENDING AIRNAV DATA FOR I-TEB AND TORBY LOM DECOMMISSIONING AND NEW DME ACTIVATION.

ACTIVE AIRPORT DATA USED, PENDING I-TEB DATA USED. HARD DATE

HYBRID PROCEDURE INCORPORATED MISSED APPROACH PBN SEGMENT.

WAIVER FOR MAXIMUM ALTITUDE RESTRICTION IN MISSED APPROACH SEGMENT ON FILE. APPROVAL FOR MANDATORY ALTITUDE IN INTERMEDIATE SEGMENT ON FILE.

CONTACT: ERIC SUSKI, AJV-A431, 405.954.7331.



Digitally signed by

ERIC N SUSKI

Sep 27, 2023

8260-2 DANDY

02/15/2024: THIS IS A CORRECTED COPY OF THE FORM APPROVED ON 02/13/2024
REPLACED DANDY REV 9 WITH REV 10.

J ZEDER 02/15/2024 16



03/15/2024: THIS IS A CORRECTED COPY OF THE FORM APPROVED ON 02/13/2024.

8260-3:

1. PROFILE LINE 2 CHANGED PROFILE STARTS AT FROM "DANDY" TO "DANDY/RADAR". - CORRECTED FIX MAKE-UP DOCUMENTATION.
2. PROFILE LINE 6 CHANGED FROM "MIN GP INCPT: 1300" TO "MIN GS INCPT: 1300" AND FROM "GP ALT AT PFAF: GP INTCP 1300" TO "GS ALT AT PFAF: TORBY INT/4.93 DME 1300". - UPDATED FORM FORMAT AND CORRECTED PFAF LOCATION

J ZEDER 03/15/2024

Digitally signed by

ERIC N SUSKI

Mar 15, 2024

NEW

TETERBORO, NEW JERSEY

AL-890 (FAA)

FIG

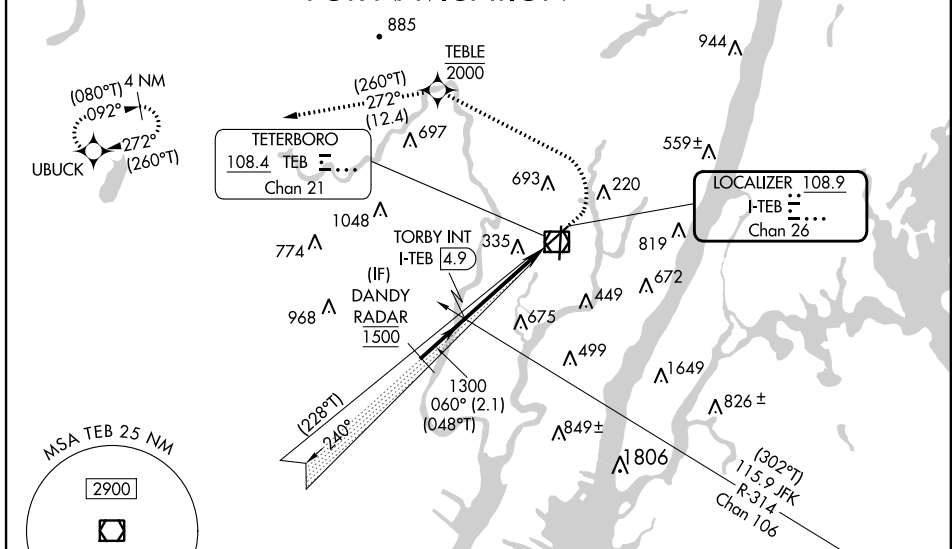
LOC/DME I-TEB 108.9 Chan 26	APP CRS 060°	Rwy Idg 6013 TDZE 6 Apt Elev 8
---	------------------------	---

COPTER ILS Y or LOC Y RWY 6

TETERBORO (TEB)

RNP APCH - GPS. RADAR required.		MALSR 	MISSED APPROACH: Climb to 1000, then climbing left turn to 2000 direct TEBLE, cross TEBLE at or below 2000, then climb to 3000 on track 272° to UBUCK and hold.			
NA	D-ATIS 114.2 132.85	NEW YORK APP CON 127.6 379.9	TETERBORO TOWER 119.5	GND CON 121.9	CLNC DEL 128.05	CPDLC

PROTOTYPE-NOT FOR NAVIGATION



ELEV 8 TDZE 6		1000 2000 TEBLE 3000 UBUCK	
DANDY RADAR 1500 TORBY INT I-TEB 4.9		I-TEB 2.7 I-TEB 1	
GS 3.00° TCH 53		tr 272°	
2.1 NM 2.3 NM 1.6 NM		61 98 61 7000 X 150 TWR 110	
CATEGORY H-ILS 6 H-LOC 6		COPTER 206/12 200 (200-¼) 580/24 574 (600-½)	
		TDZ/CL Rwy 6 and 19 REIL Rwy 1, 6, 19 and 24 HIRL Rwy 1-19 and 6-24	
		FAF to MAP 3.9 NM	
		Knots 45 60 75 90 105	
		Min:Sec 5:12 3:54 3:07 2:36 2:14	

TETERBORO, NEW JERSEY

Amdt 3 FIG

40°51'N-74°04'W

TETERBORO (TEB)

COPTER ILS Y or LOC Y RWY 6

LOC I-TEB 108.9	APP CRS 060°	Rwy Idg TDZE Apt Elev	6013 6 8
---------------------------	------------------------	-----------------------------	-------------------------------------

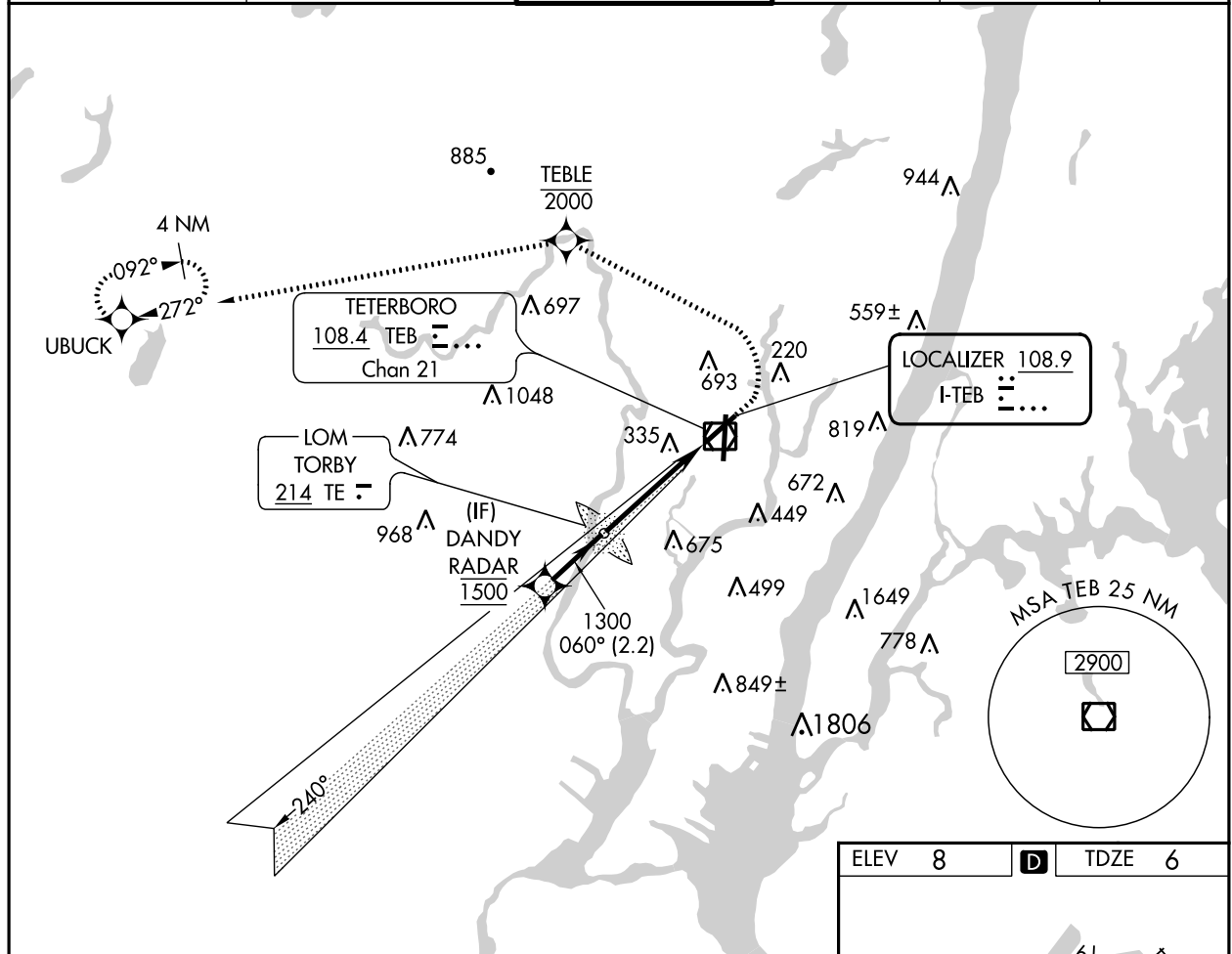
OLD

COPTER ILS Y or LOC Y RWY 6

TETERBORO (TEB)

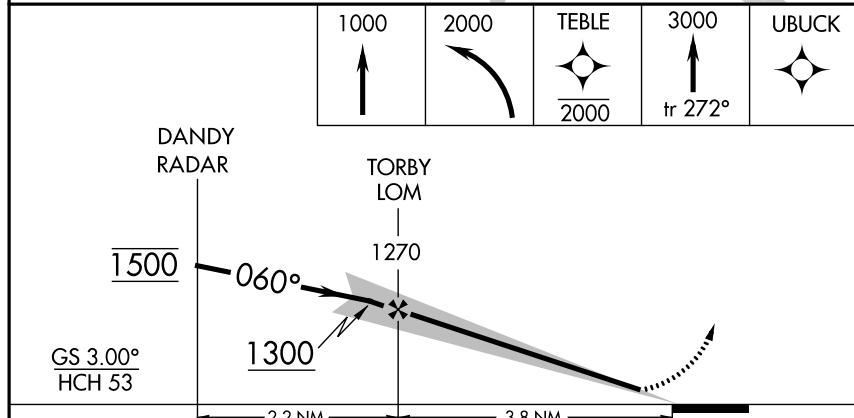
RNP APCH - GPS. RADAR required.	MALSRL 	MISSED APPROACH: Climb to 1000, then climbing left turn to 2000 direct TEBLE, cross TEBLE at or below 2000, then climb to 3000 on track 272° to UBUCK and hold.
------------------------------------	------------	---

D-ATIS 114.2 132.85	NEW YORK APP CON 127.6 379.9	TETERBORO TOWER 119.5	GND CON 121.9	CLNC DEL 128.05	CPDLC
-------------------------------	--	---------------------------------	-------------------------	---------------------------	-------

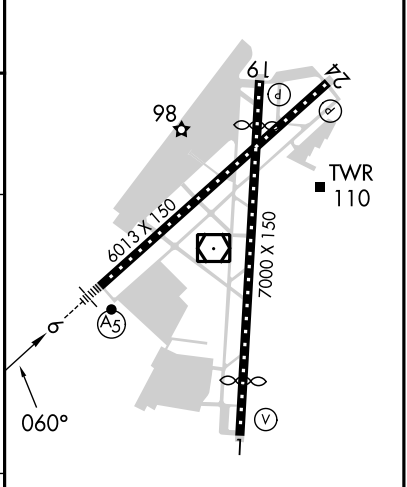


NE-2, 07 SEP 2023 to 05 OCT 2023

NE-2, 07 SEP 2023 to 05 OCT 2023

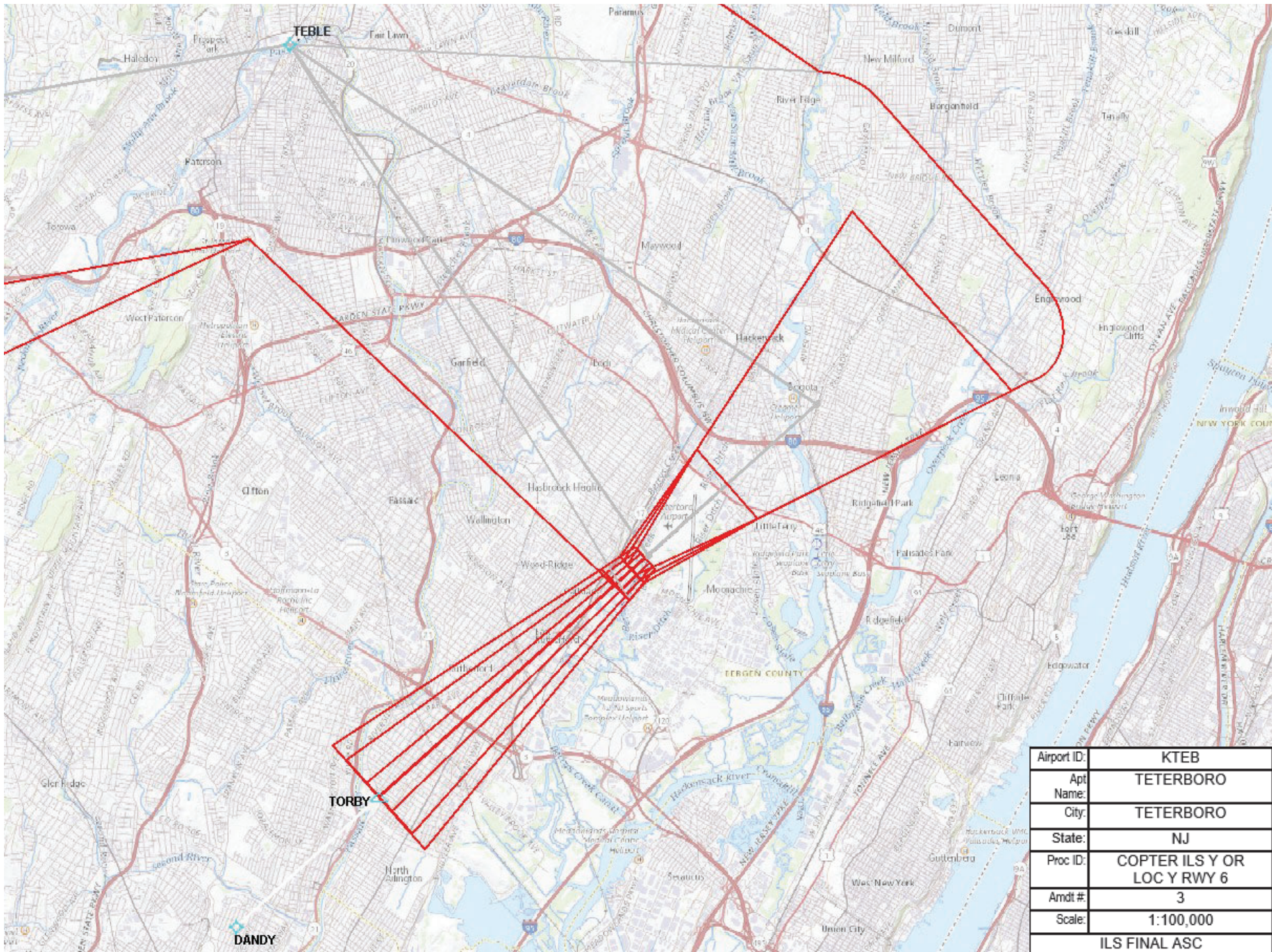


ELEV	8	D	TDZE	6
------	----------	----------	------	----------

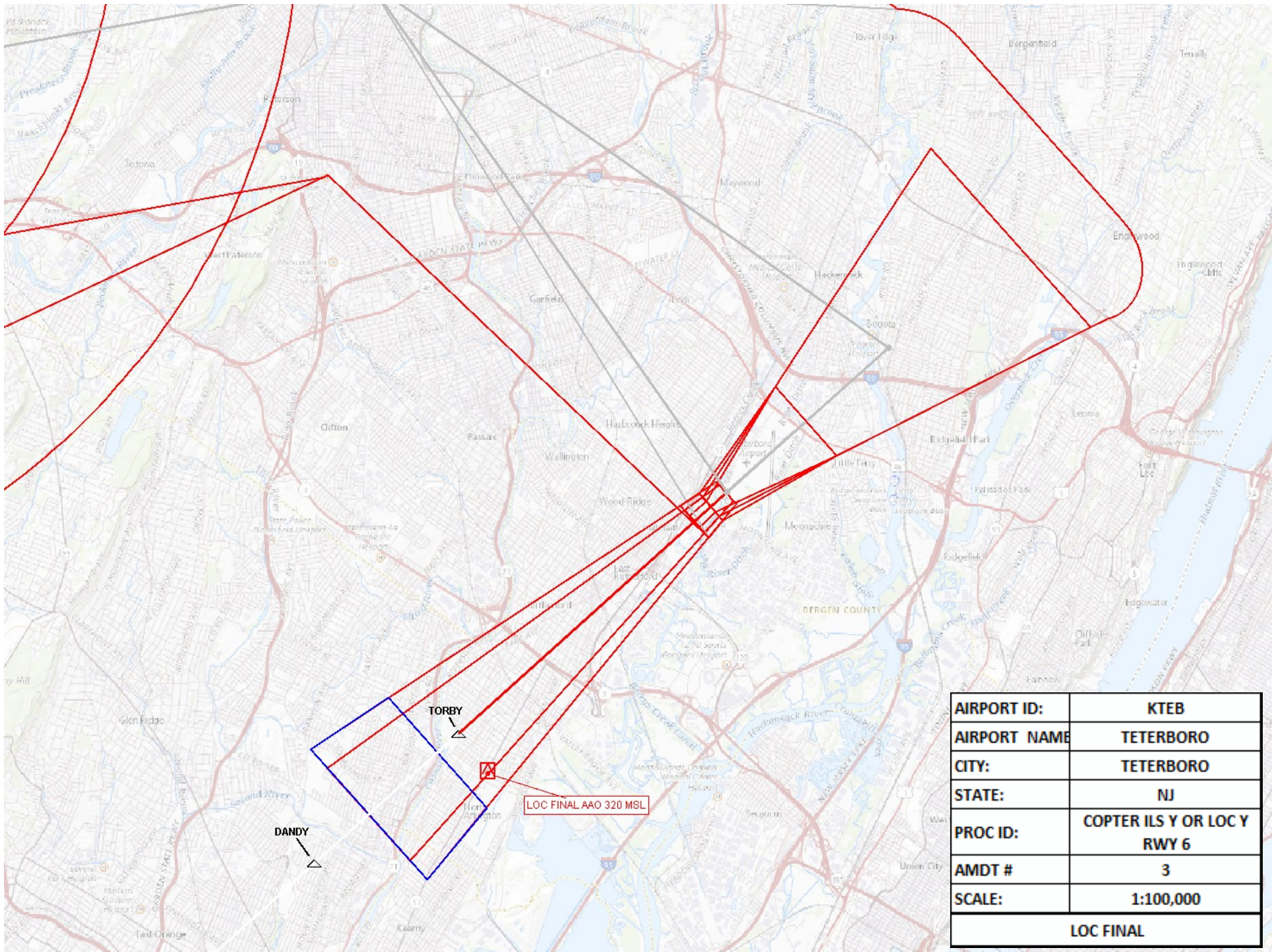


CATEGORY	COPTER					TDZ/CL Rws 6 and 19 REIL Rws 1, 6, 19 and 24 HIRL Rws 1-19 and 6-24					
H-ILS 6	206/12	200 (200-1/4)				FAF to MAP 3.8 NM					
H-LOC 6	560/24	554 (600-1/2)				Knots	45	60	75	90	105
			Min:Sec	5:04	3:48	3:02	2:32	2:10			

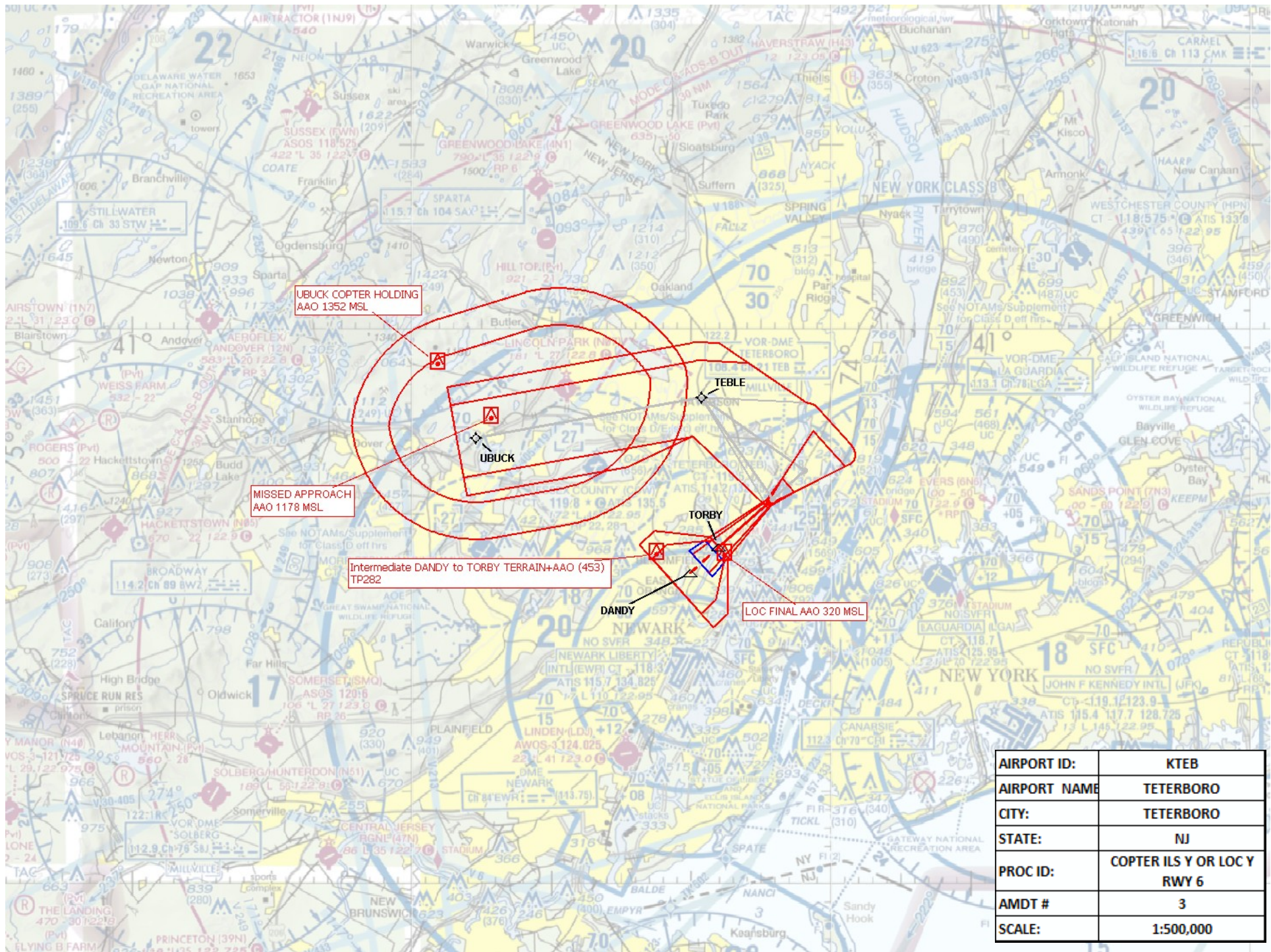
COPTER ILS Y or LOC Y RWY 6



Airport ID:	KTEB
Apt Name:	TETERBORO
City:	TETERBORO
State:	NJ
Proc ID:	COPTER ILS Y OR LOC Y RWY 6
Amdt #:	3
Scale:	1:100,000
ILS FINAL ASC	



AIRPORT ID:	KTEB
AIRPORT NAME:	TETERBORO
CITY:	TETERBORO
STATE:	NJ
PROC ID:	COPTER ILS Y OR LOC Y RWY 6
AMDT #	3
SCALE:	1:100,000
LOC FINAL	



AIRPORT ID:	KTEB
AIRPORT NAME:	TETERBORO
CITY:	TETERBORO
STATE:	NJ
PROC ID:	COPTER ILS Y OR LOC Y RWY 6
AMDT #	3
SCALE:	1:500,000